

Foothills Village Center

3233 E. Chandler Blvd, | Phoenix, Arizona 85048

Retail Suites for Lease in Upscale Ahwatukee Market



Property Summary

- ±24,103 SF Retail Project
- Suites From ±777 - ±2,112 SF
- SEC of Chandler & 32nd St.
- Chandler Blvd. Frontage
- Shadow Anchored by Goodwill & Montessori School
- Minutes From I-10 & Loop 202 and Desert Vista High School
- Zoning: C-2, PCD
- Excellent Demographics
- Retail, Office, Medical Build-Outs Available

Kyle Davis

D 480.889.2566
M 203.419.5385
kdavis@cpiaz.com

CJ Barnett

D 480.889.2553
M 480.862.2775
cbarnett@cpiaz.com



COMMERCIAL PROPERTIES INC.

Locally Owned. Globally Connected. CORFAC

TEMPE: 2323 W. University Drive, Tempe, AZ 85281 | 480.966.2301
SCOTTSDALE: 8777 N. Gainey Center Dr., Suite 245, Scottsdale, AZ 85258 | www.cpiaz.com

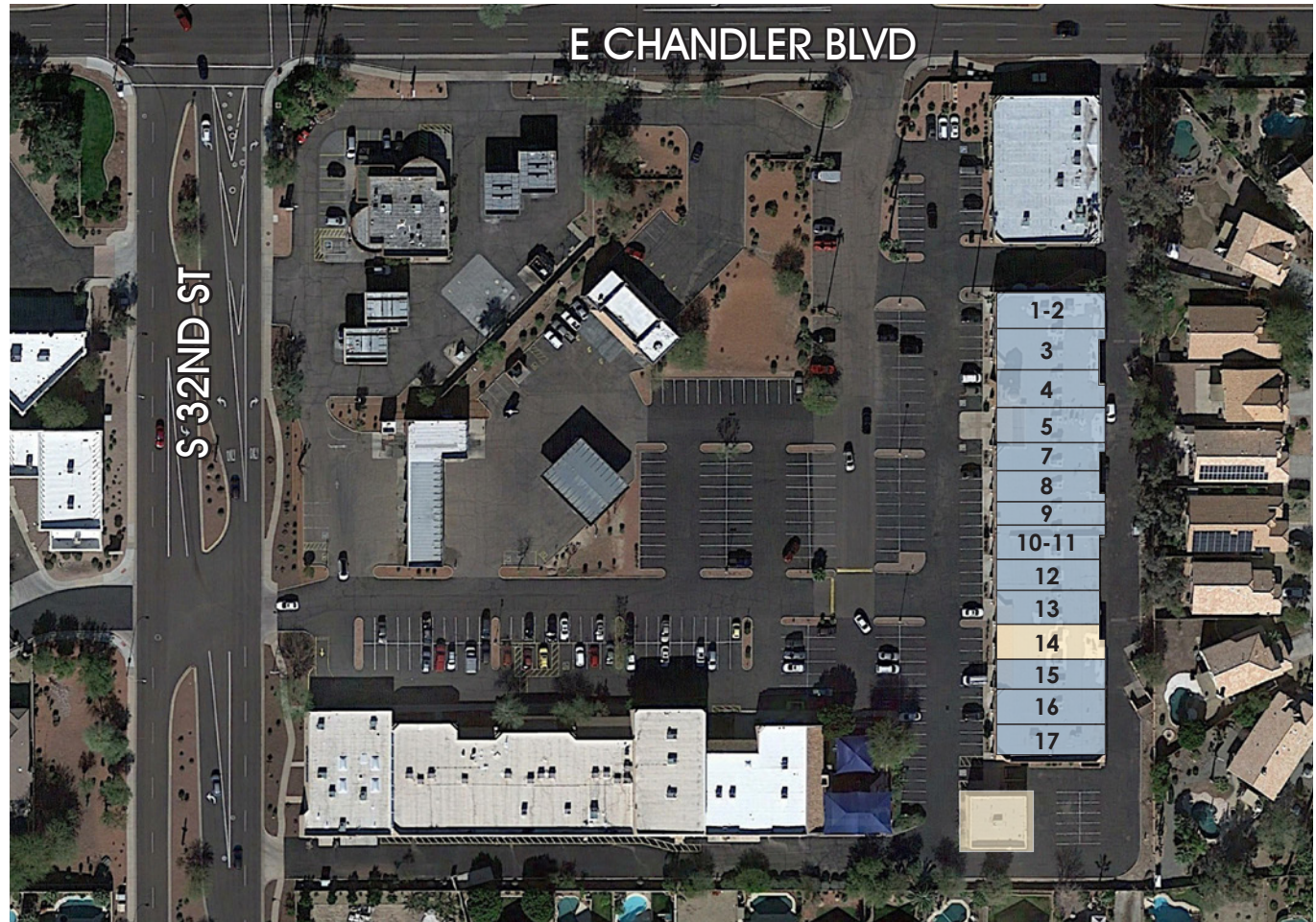
Foothills Village Center

3233 E. Chandler Blvd, | Phoenix, Arizona 85048

Retail Suites for Lease in Upscale Ahwatukee Market



TENANT	SF	
1-2	Music Makers	±2,889
3	Music Makers	±1,583
4	Channel Choice	±1,047
5	Franciscos Mexican Restaurant	±829
6	Nail Salon	±1,040
7	Occupied	±2,159
8	Alterations	±1,021
9	Home Pad Lending	±1,104
10-11	Pokemart	±2,414
12	Philly Hair	±777
13	Farmers Insurance	±1,027
14	Available (Orthodontal Build-out)	±2,112
15	Relax & Lash	±1,480
16	Edward Jones	±732
17	Wrestling Gym	±2,520



Kyle Davis
D 480.889.2566
M 203.419.5385
kdavis@cpiaz.com

CJ Barnett
D 480.889.2553
M 480.862.2775
cbarnett@cpiaz.com

 **COMMERCIAL PROPERTIES INC.**
Locally Owned. Globally Connected. CORFAC

TEMPE: 2323 W. University Drive, Tempe, AZ 85281 | 480.966.2301
SCOTTSDALE: 8777 N. Gainey Center Dr., Suite 245, Scottsdale, AZ 85258 | www.cpiaz.com

The information contained herein has been obtained from various sources. We have no reason to doubt its accuracy; however, J & J Commercial Properties, Inc. has not verified such information and makes no guarantee, warranty or representation about such information. The prospective buyer or lessee should independently verify all dimensions, specifications, floor plans, and all information prior to the lease or purchase of the property. All offerings are subject to price change, prior sale, lease, or withdrawal from the market without prior notice. Effective: 06 24 21

Foothills Village Center

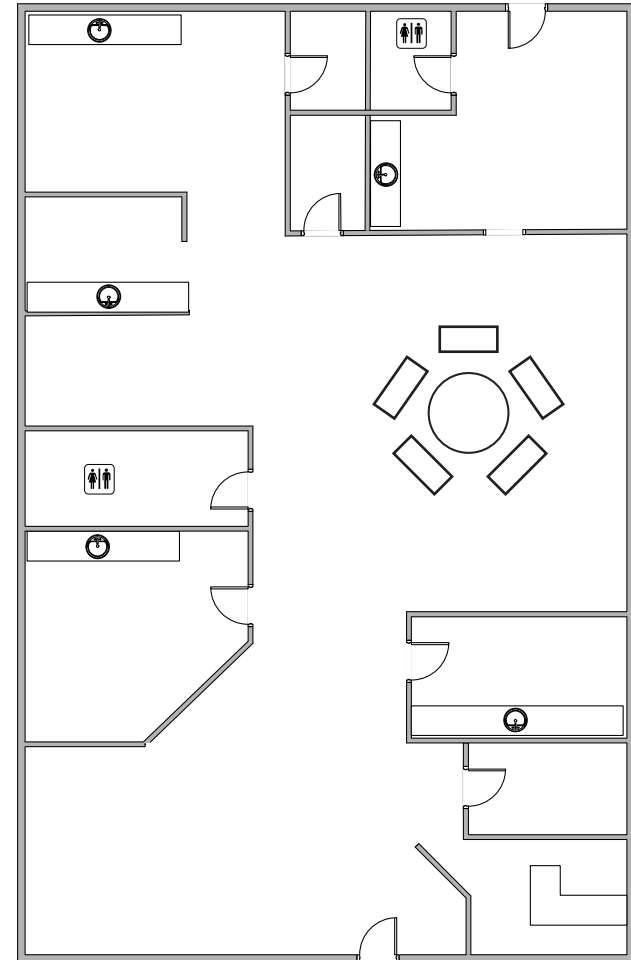
3233 E. Chandler Blvd, | Phoenix, Arizona 85048

Retail Suites for Lease in Upscale Ahwatukee Market



Suite 14 | ±2,112 SF:

- Orthodontal/Dental Build Out
- Ideal For Dental, Medical, Or Health & Beauty Use
- Reception
- 7 Operatories
- Multiple Restrooms
- All Rooms Include Plumbing
- Ample Storage



Approx. Floor Plan

Kyle Davis

D 480.889.2566

M 203.419.5385

kdavis@cpiaz.com

CJ Barnett

D 480.889.2553

M 480.862.2775

cbarnett@cpiaz.com



COMMERCIAL PROPERTIES INC.

Locally Owned. Globally Connected. CORFAC

TEMPE: 2323 W. University Drive, Tempe, AZ 85281 | 480.966.2301
SCOTTSDALE: 8777 N. Gainey Center Dr., Suite 245, Scottsdale, AZ 85258 | www.cpiaz.com

Foothills Village Center

3233 E. Chandler Blvd, | Phoenix, Arizona 85048

Retail Suites for Lease in Upscale Ahwatukee Market



Demographics	1 Mile	3 Mile	5 Mile
2019 Population	13,901	61,046	119,917
2024 Population	14,607	65,209	128,498
Median Household Income	\$96,621	\$90,397	\$86,284

Sourced from CoStar 2019

Kyle Davis
 D 480.889.2566
 M 203.419.5385
 kdavis@cpi.az.com

CJ Barnett
 D 480.889.2553
 M 480.862.2775
 cbarnett@cpi.az.com

COMMERCIAL PROPERTIES INC.
 Locally Owned. Globally Connected. CORFAC

TEMPE: 2323 W. University Drive, Tempe, AZ 85281 | 480.966.2301
 SCOTTSDALE: 8777 N. Gainey Center Dr., Suite 245, Scottsdale, AZ 85258 | www.cpi.az.com

The information contained herein has been obtained from various sources. We have no reason to doubt its accuracy; however, J & J Commercial Properties, Inc. has not verified such information and makes no guarantee, warranty or representation about such information. The prospective buyer or lessee should independently verify all dimensions, specifications, floor plans, and all information prior to the lease or purchase of the property. All offerings are subject to price change, prior sale, lease, or withdrawal from the market without prior notice.

Effective: 06 24 21