

FOR LEASE

1333 PACIFIC COAST HWY, SUITE 202, REDONDO BEACH, CA
1,492 sf Available - 2nd Floor Office Space



The property consist of an 8,700 SF building with 1,491 SF of available second floor office space. Farmers & Merchants bank occupies the entire ground floor. Surrounding tenants include:

TRADER JOE'S

CHASE



Smart & Final.

Bank of America.



WELLS FARGO

FEATURES:

- △ 1,492 SF Available - 2nd Floor Office Space
- △ Excellent Visibility
- △ Asking Rent: \$3.95 Modified Gross
- △ Ideal for Medical or Office Use
- △ Shared Break Room

MICHAEL GRANNIS

Lic. 01393628

Phone: 310 567 1650

mike@westpacpartners.com

DEMOGRAPHICS 2024 EST.:



POPULATION

1 Mile	2 Miles	3 Miles
21,383	64,892	135,925



AVG HH INCOME

1 Mile	2 Miles	3 Miles
\$196,755	\$199,890	\$206,664



DAYTIME POPULATION

1 Mile	2 Miles	3 Miles
6,436	26,443	71,202

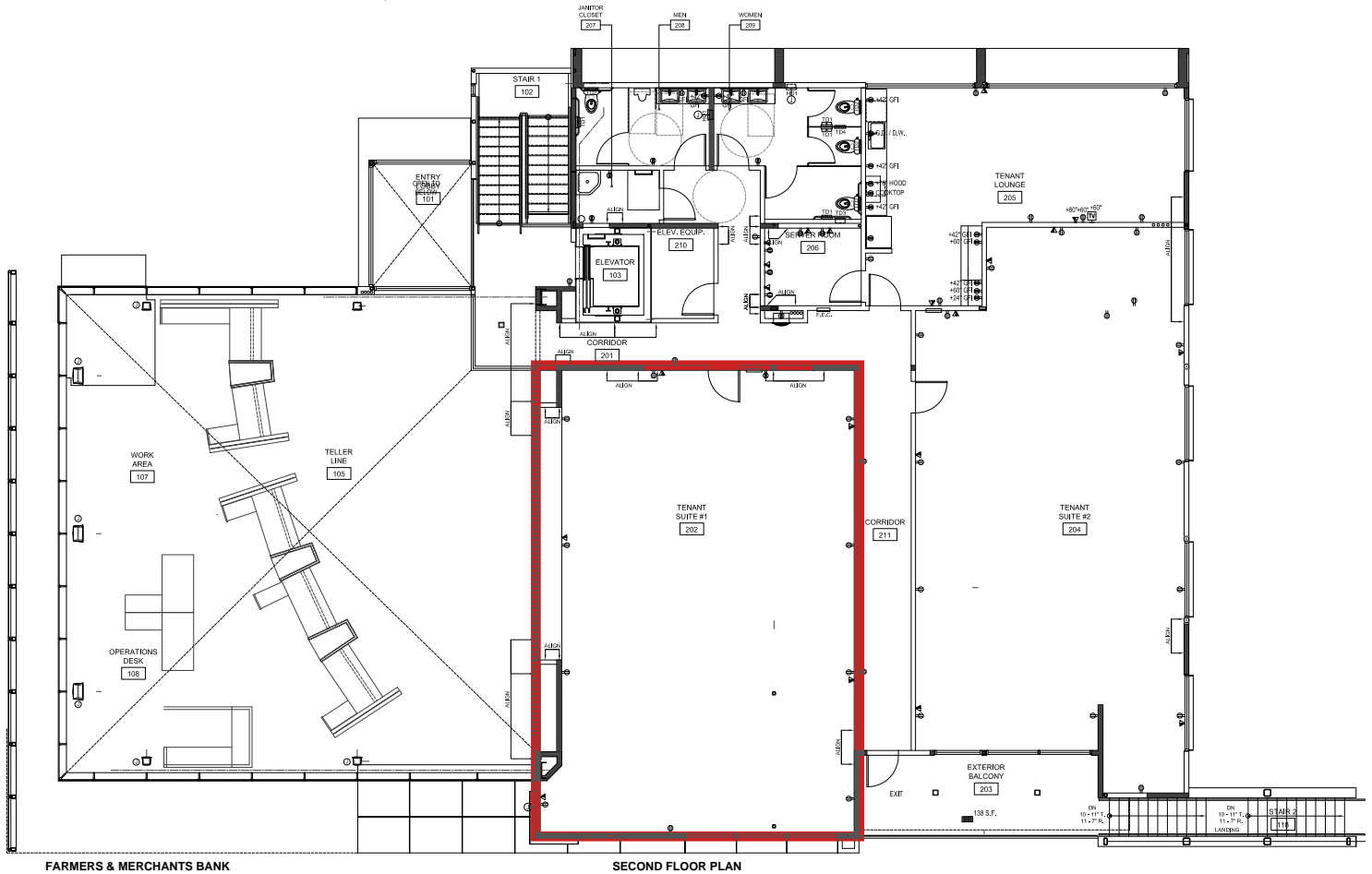
Demographic Source: Applied Geographic Solutions 5/2024, TIGER Geography



REDONDO BEACH

AVAILABLE 2ND FLOOR OFFICE SPACE FOR LEASE

1333 S. PACIFIC COAST HWY, SUITE 202
1,492 SF



MICHAEL GRANNIS
Lic. 01393628
Phone: 310 567 1650
mike@westpacpartners.com



REDONDO BEACH

AVAILABLE 2ND FLOOR OFFICE SPACE FOR LEASE



MICHAEL GRANNIS
Lic. 01393628
Phone: 310 567 1650
mike@westpacpartners.com



Westpac Partners | 1711 Via El Prado, Suite 302 | Redondo Beach, CA 90277 | www.westpacpartners.com

© 2024 | Westpac Partners | The information being provided by Westpac Partners and/or its sources is deemed reliable. While we have no reason to doubt its accuracy, we do not guarantee it. Any information, measurements, facts and actual drawings shown are approximate, subject to change, or withdrawal without notice and should be independently verified by you and may not be relied upon as a precise representation by this office. No warranties or representations are made as to the condition of the property or any hazards contained therein nor any to be implied. | Logos are for identification purposes only and may be trademarks of their respective companies. 1333PCH_BRO_v01.indd | 09/24