

For Lease

Neil Rd. & S. Virginia St.



6225 Neil Rd.
Reno, NV 89511

Michael Keating, SIOR
Partner
775.386.9727
mkeating@logicCRE.com
S.0174942

Michael Dorn
Senior Associate
775.453.4436
mdorn@logicCRE.com
S.0189635

Listing Snapshot



\$1.65 PSF
Lease Rate



± 1,100 - 7,653 SF
Available Square Footage



Full Service
Lease Type

Property Highlights

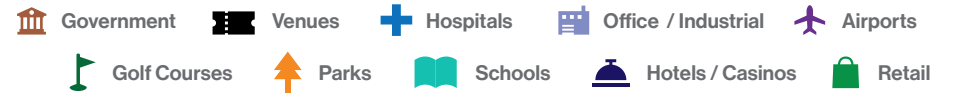
- Multi-tenant office building in Meadowood submarket
- Multiple configurations available
- Parking: 4 spaces/1,000 SF
- Elevator served
- MUCC Zoning
- Situated along public transit routes
- Charter fiber internet available
- Full service lease rate excludes internet & in-suite janitorial

Demographics


	1-mile	3-mile	5-mile
2025 Population	8,896	72,222	170,321
2025 Average Household Income	\$95,719	\$106,083	\$124,730
2025 Total Households	3,878	31,150	75,430



Aerial



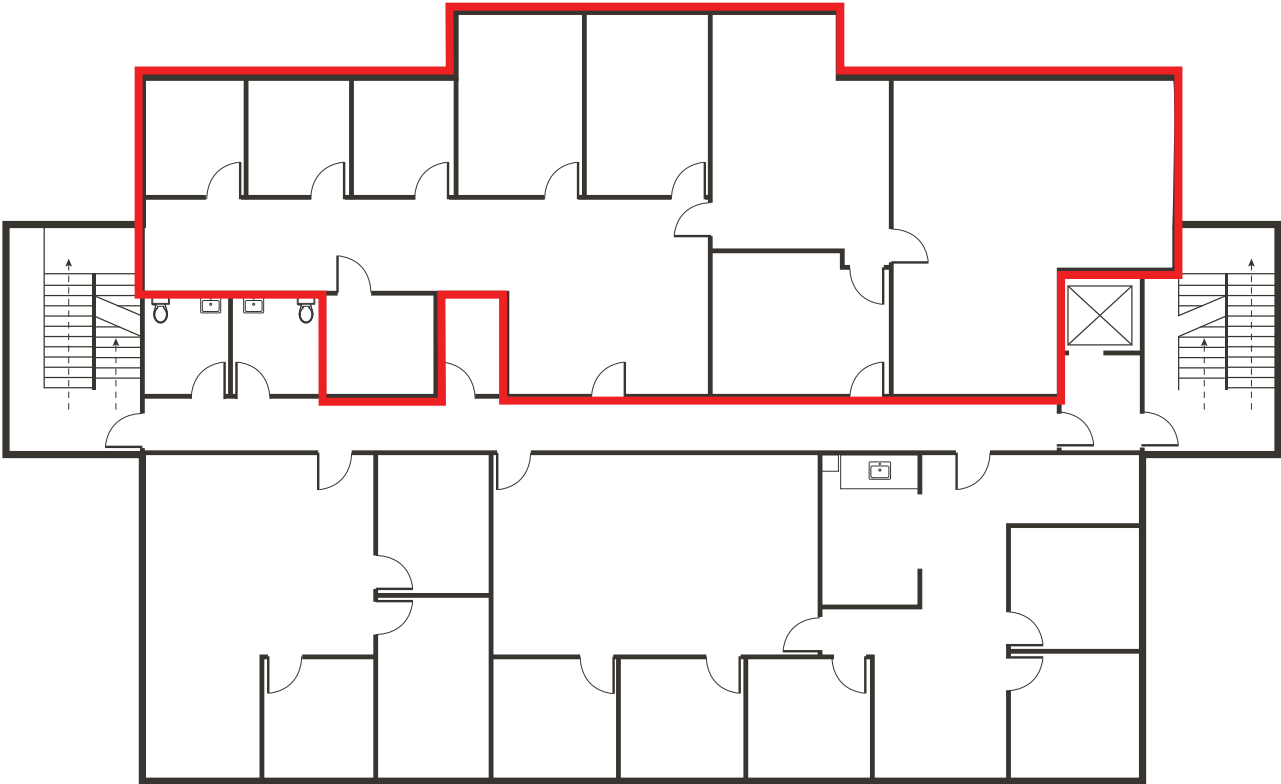
Floor Plan | Second Floor | Suite 202

 **\$1.65 PSF FS**
Lease Rate


 **± 2,781 SF**
Square Footage

- Six (6) private offices
- Two (2) entrances
- Two (2) conference rooms
- Kitchenette

[Click for a Virtual Tour](#) 



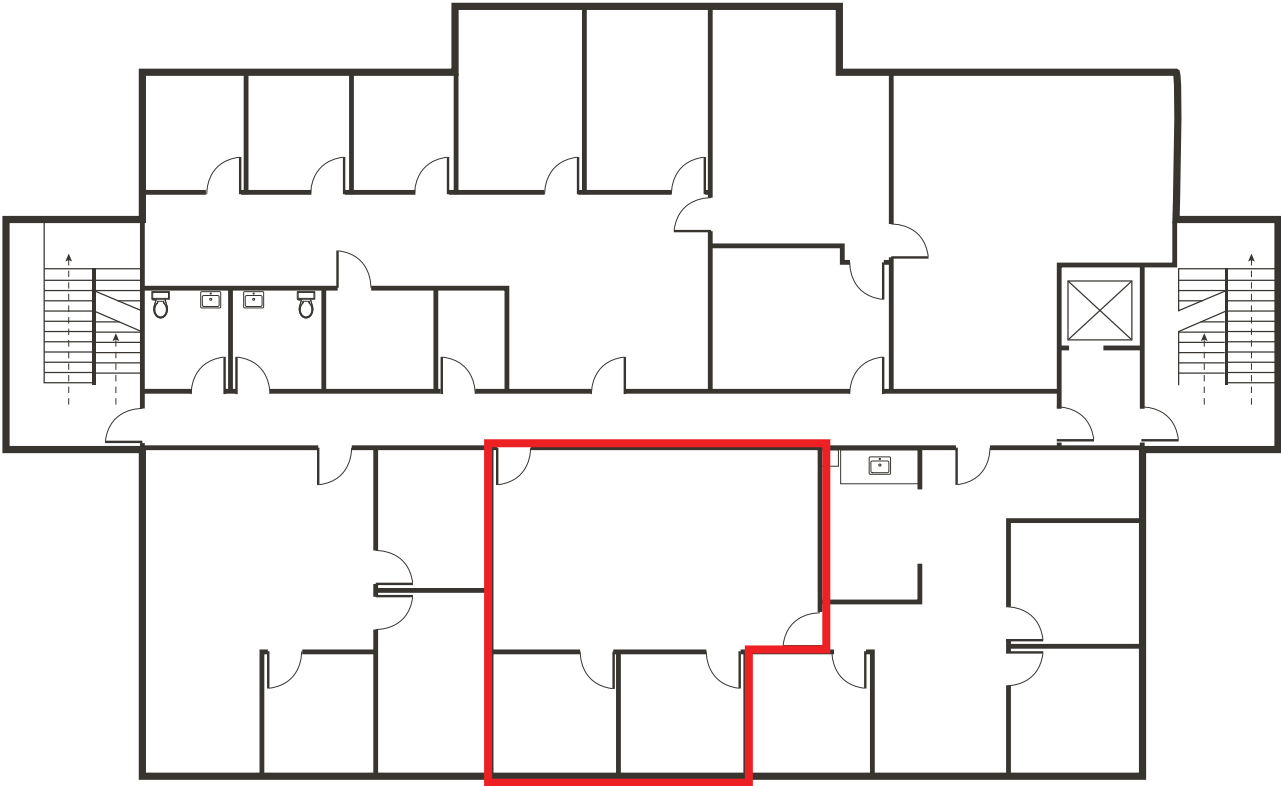
Floor Plan | Second Floor | Suite 203

 **\$1.65 PSF FS**
Lease Rate


 **± 1,100 SF**
Square Footage

- Two (2) private offices
- Mostly open plan

Click for a Virtual Tour 



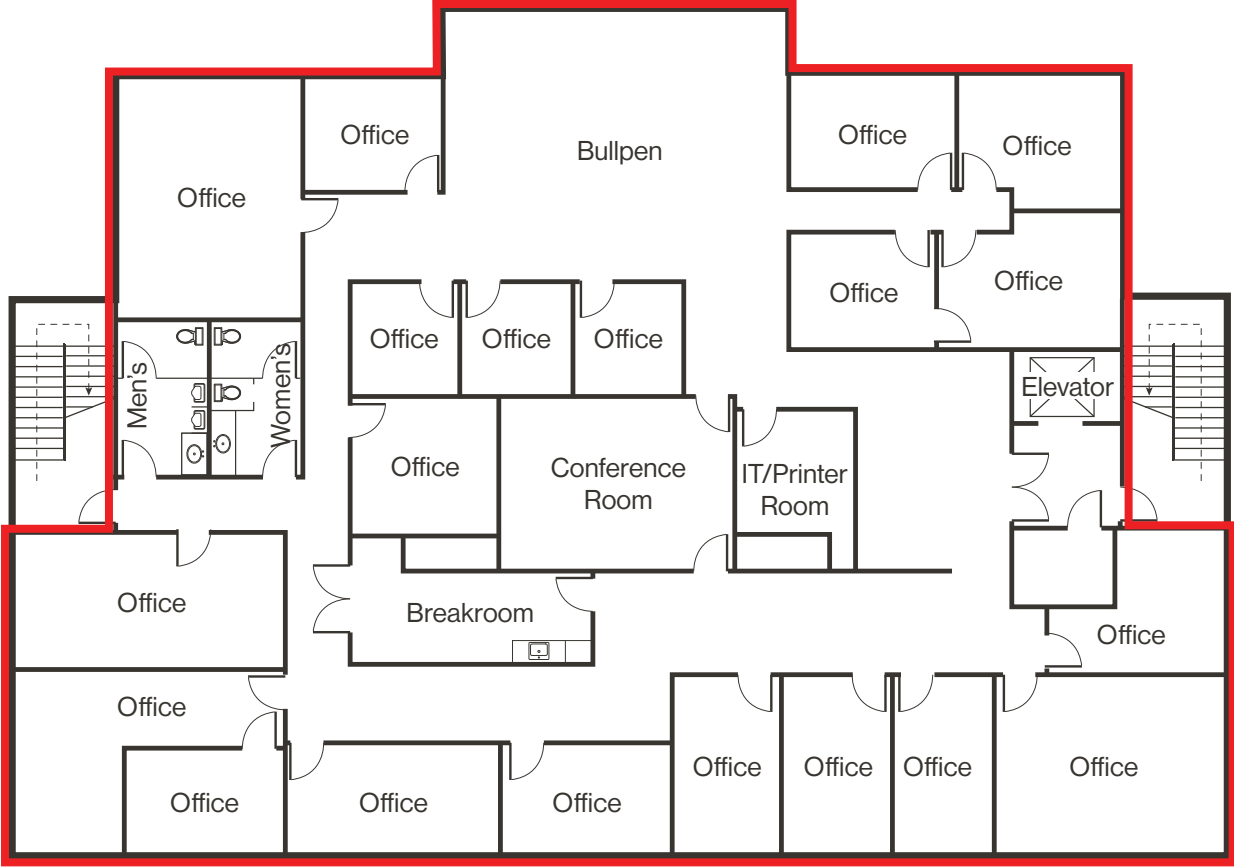
Floor Plan | Third Floor | Suite 300

 **\$1.65 PSF FS**
Lease Rate

 **± 7,653 SF**
Square Footage

- Whole floor space
- Eighteen (18) private offices
- Conference room
- Breakroom/Kitchen
- Two (2) private restrooms
- IT/Printer room
- Bullpen

[Click for a Virtual Tour](#) 



Property Photos



LOGIC Commercial Real Estate

Specializing in Brokerage and Receivership Services



Join our email list and
connect with us on LinkedIn

The information herein was obtained from sources deemed reliable; however LOGIC Commercial Real Estate makes no guarantees, warranties or representation as to the completeness or accuracy thereof.

For inquiries please reach out to our team.

Michael Keating, SIOR
Partner
775.386.9727
mkeating@logicCRE.com
S.0174942

Michael Dorn
Senior Associate
775.453.4436
mdorn@logicCRE.com
S.0189635