



263 BEDFORD STREET

WHITMAN, MA

FOR LEASE | TWO 6,250 SF CONTRACTOR-BAY BUILDINGS

- 12,500 SF Available
- Two contractor-bay buildings being delivered in Fall 2025
- Prominent Frontage on Route 18



THE
STUBBLEBINE
COMPANY

CORFAC INTERNATIONAL

PROPERTY SUMMARY



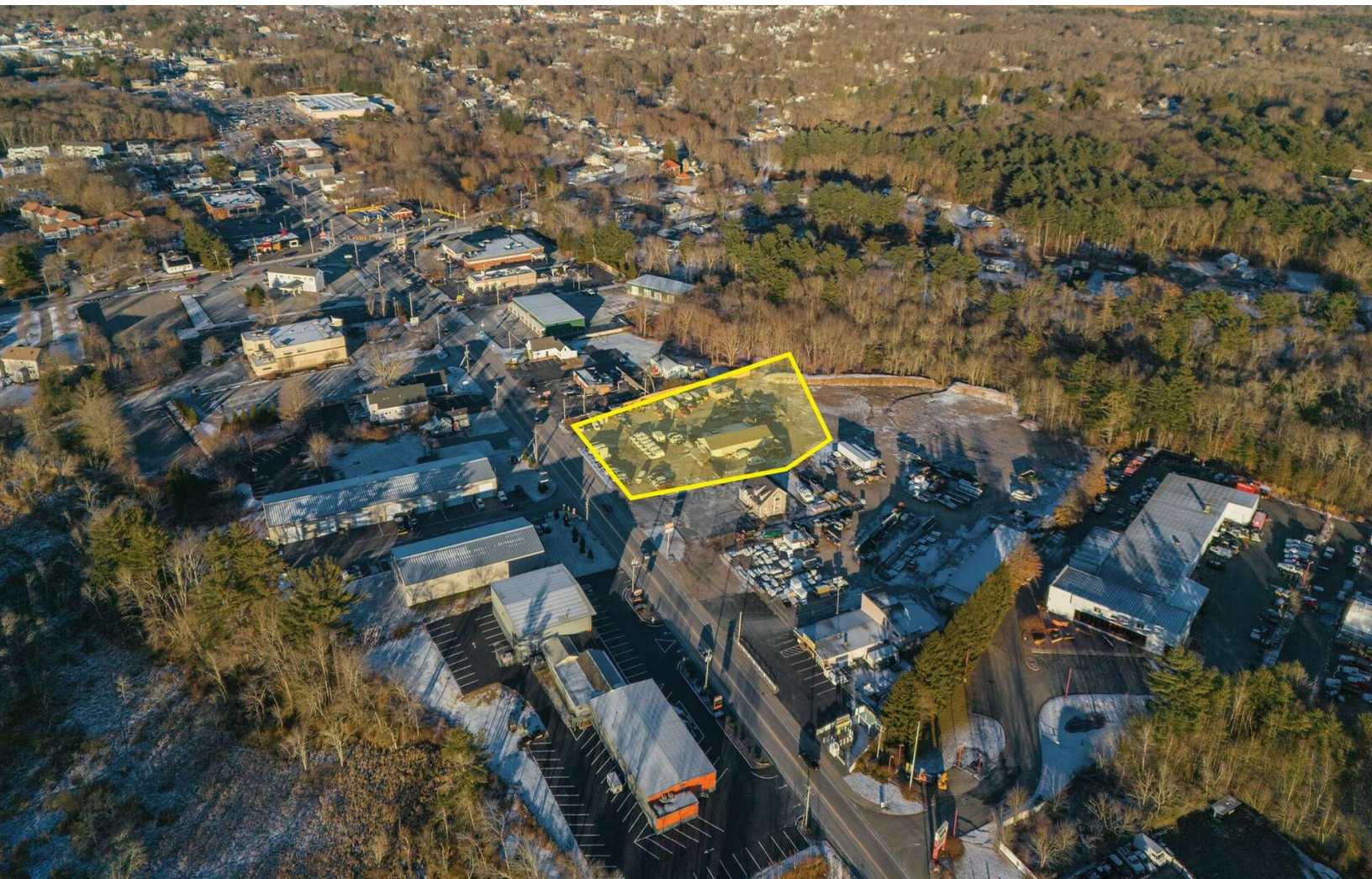
PROPERTY DESCRIPTION

- 12,500 SF Available
- Two (2) contractor-bay buildings being delivered in Fall 2025
- Frontage/signage capabilities on Route 18
- Industrial, Retail, and many more capabilities
- Eight (8) 1,250 SF Industrial Units
- Two (2) 1,250 SF Retail/Showroom Units

OFFERING SUMMARY

Proposed SF:	12,500 SF
Building Size:	Two (2) 6,250 SF
Loading:	Eight (8) 14' x 14' Drive-in doors
Lot Size:	1.19 AC
Zoning:	Highway Business/Limited Industrial
Lease Rate:	Market

DEMOGRAPHICS	3 MILES	5 MILES	10 MILES
Total Households	15,736	55,225	165,700
Total Population	44,596	158,201	456,579
Average HH Income	\$127,365	\$121,832	\$140,365





Randolph

BRAINTREE
HIGHLANDS

SOUTH
WEYMOUTH

ACCORD

ASSINIPPI

Holbrook

SOUTHFIELD

Avon

NORTH
ABINGTON

Abington

Brockton
DOWNTOWN

Whitman

AUBURNVILLE

Hanson

Pemb

24

18

East
Bridgewater

BRYANTVILLE

CAMPELLO

West
Bridgewater

ELMWOOD

MONPONSETT

ALGERS CORNER

Bridgewater



METALS COMPANY INC.
STAINLESS & SUPERIOR ALLOYS



RAYNHAM
CENTER

24

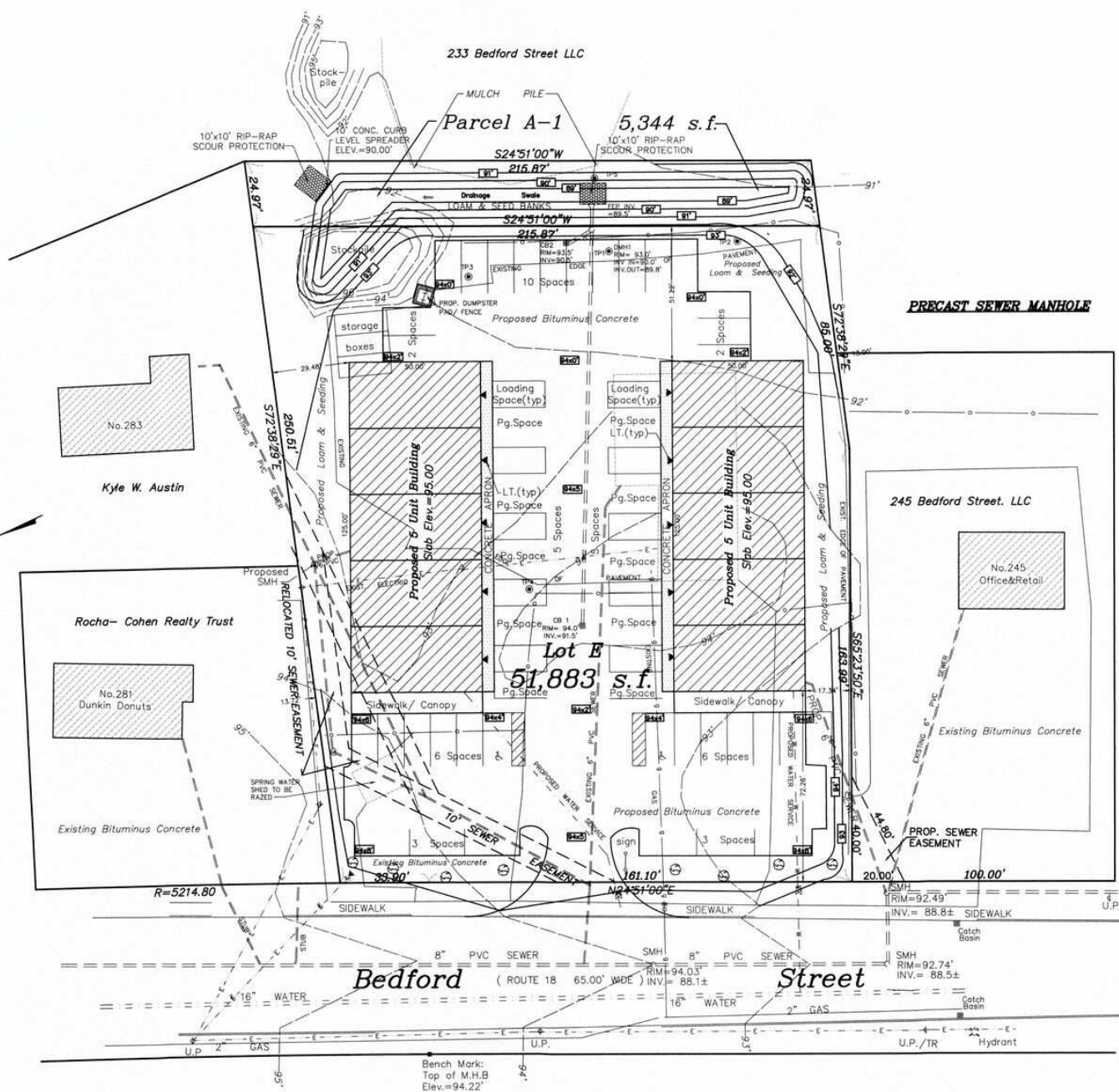
495

44

Map data ©2024 Imagery
©2024 TerraMetrics

Google

SITE PLAN



263 BEDFORD STREET

WHITMAN, MA

FOR LEASE | TWO 6,250 SF CONTRACTOR-BAY BUILDINGS

STEPHEN FLYNN

781.917.7026

sflynn@stubblebinecompany.com

MATTY DROUILLARD

425.691.7881

matty@stubblebinecompany.com

We obtained the information above from sources we believe to be reliable. However, we have not verified its accuracy and make no guarantee, warranty or representation about it. It is submitted subject to the possibility of errors, omissions, change of price, rental or other conditions, prior sale, lease or financing, or withdrawal without notice. We include projections, opinions, assumptions or estimates for example only, and they may not represent current or future performance of the property. You and your tax and legal advisors should conduct your own investigation of the property and transaction.



THE
STUBBLEBINE
COMPANY

CORFAC INTERNATIONAL