

# COMMONWEALTH OFFICE PARK

201 COMMONWEALTH CT  
CARY, NC 27511



## OFFICE FOR SALE OR LEASE

WILL JUDY  
wjudy@lee-associates.com  
O 919.576.2513  
M 919.606.1956

KARAH JENNINGS MCCONNELL  
kjennings@lee-associates.com  
O 919.576.2502  
M 919.817.0705

MOSS WITHERS, SIOR, MBA  
mwITHERS@lee-associates.com  
O 919.576.2501

 **LEE &  
ASSOCIATES**  
COMMERCIAL REAL ESTATE SERVICES  
RALEIGH • DURHAM • WILMINGTON

100 Walnut Street | Cary, NC 27511 | 919-576-2500 | [lee-associates.com/raleigh](http://lee-associates.com/raleigh)



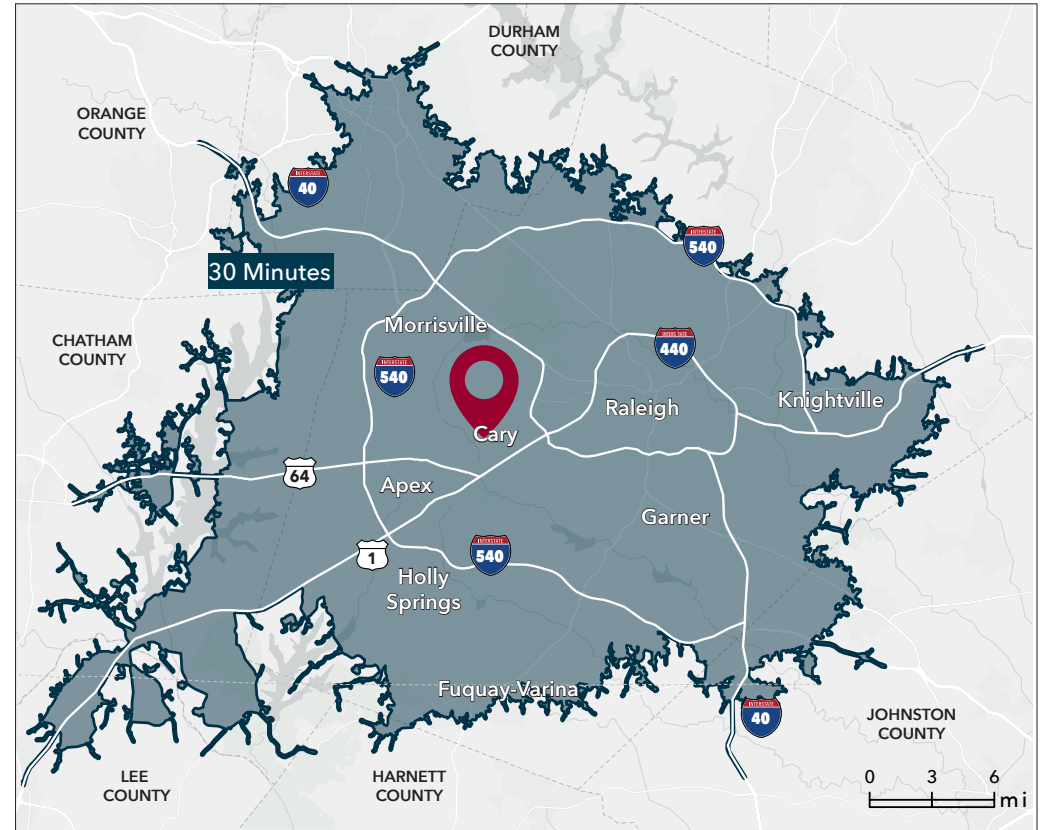
# PROPERTY OVERVIEW

## AVAILABLE

- Suite 100: 7,255 RSF - [View 3D Tour](#)
- Suite 200: 2,377 RSF - [View 3D Tour](#)
- Asking price: \$3,195,350 (\$218/SF)
- Lease rate: Contact broker

## PROPERTY HIGHLIGHTS

- 14,646 SF Multi-tenant building
- Quiet office park
- Parking ratio: 3.5/1,000
- Convenient to Downtown Cary, numerous shopping, dining, entertainment and hospitality options
- Located off Kildaire Farm Road with easy access to Cary Parkway, Maynard Road and US 1/US 64 Hwy

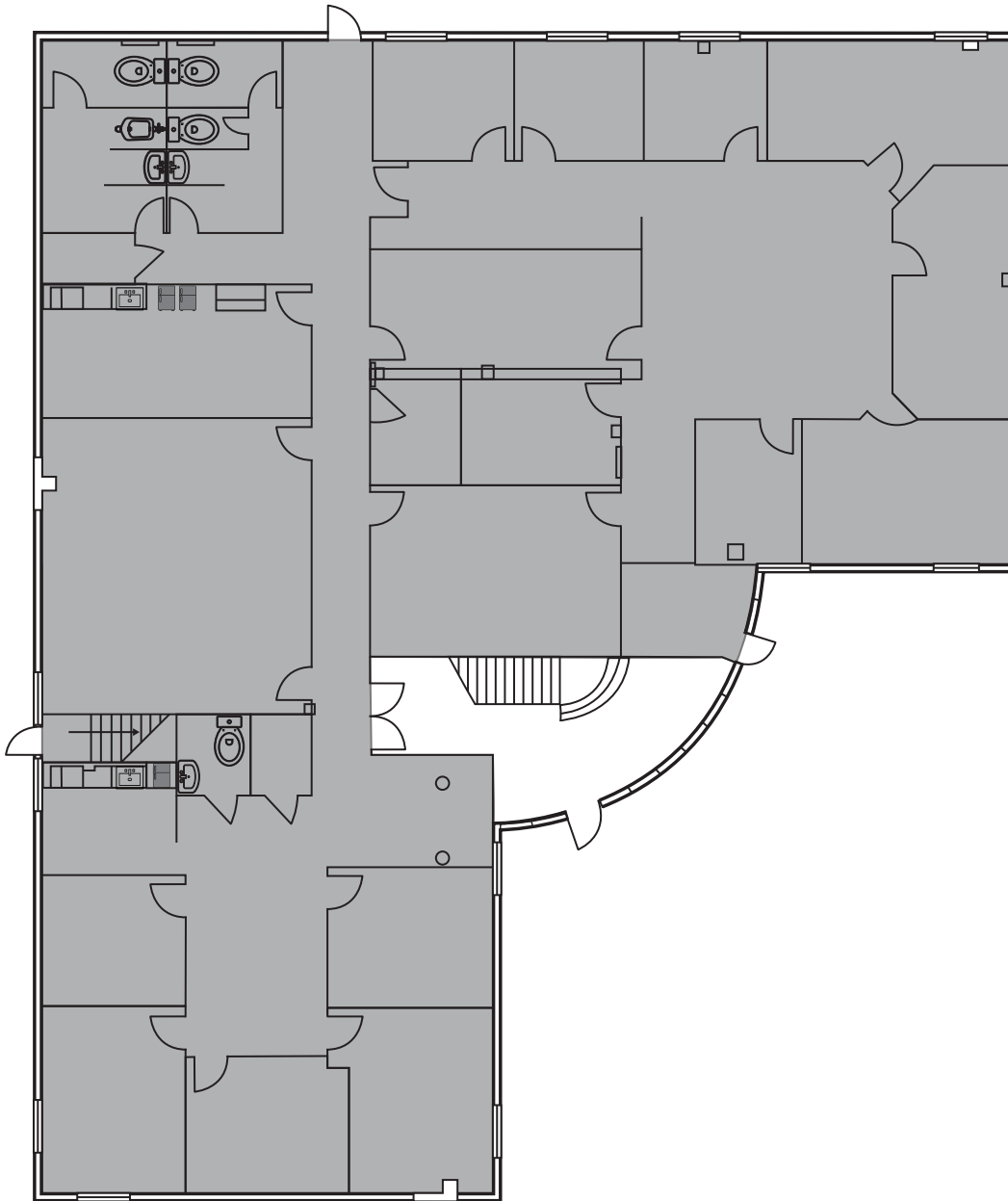


## DEMOGRAPHICS

	1 MILE	3 MILES	5 MILES
Population	10,387	82,429	191,887
Avg. HH Income	\$129,576	\$142,794	\$153,508
Total Businesses	843	4,997	9,681
Total Employees	6,605	52,317	105,983
Total Daytime Population	13,314	103,606	220,796

Source: ESRI 2025

# SUITE 100 FLOOR PLAN - ±7,255 SF



- Suite 100: 7,255 RSF
- Available now
- Multiple private offices
- Conference rooms
- Two (2) break rooms
- Training room
- In-suite bathrooms
- Lease rate: Contact broker

[View 3D Tour](#)





# SUITE 100 PHOTOS



COMMONWEALTH OFFICE PARK • 201 COMMONWEALTH CT • CARY, NC 27511

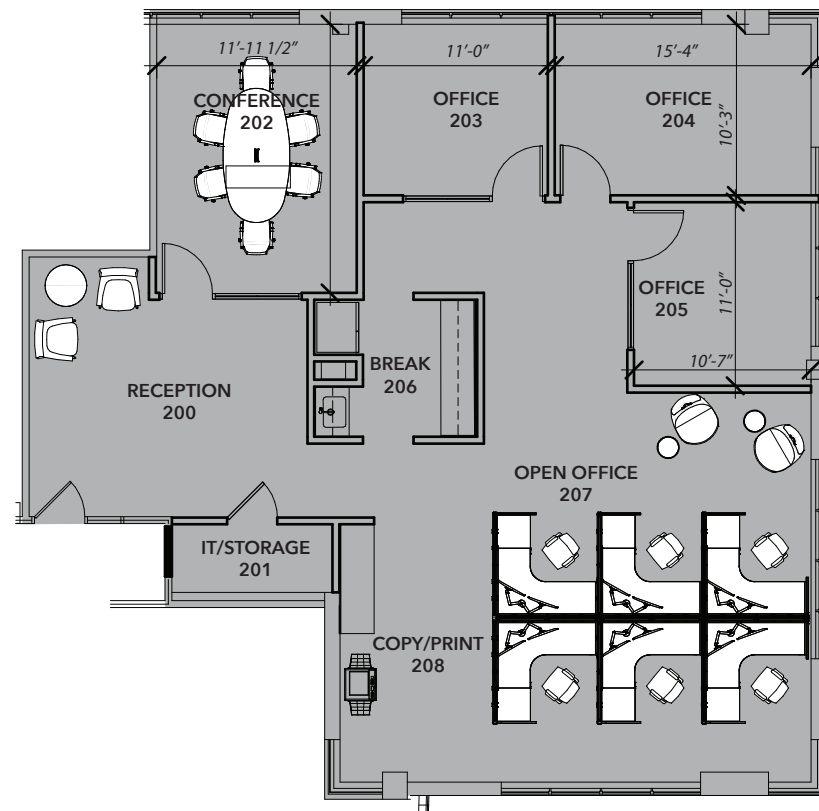
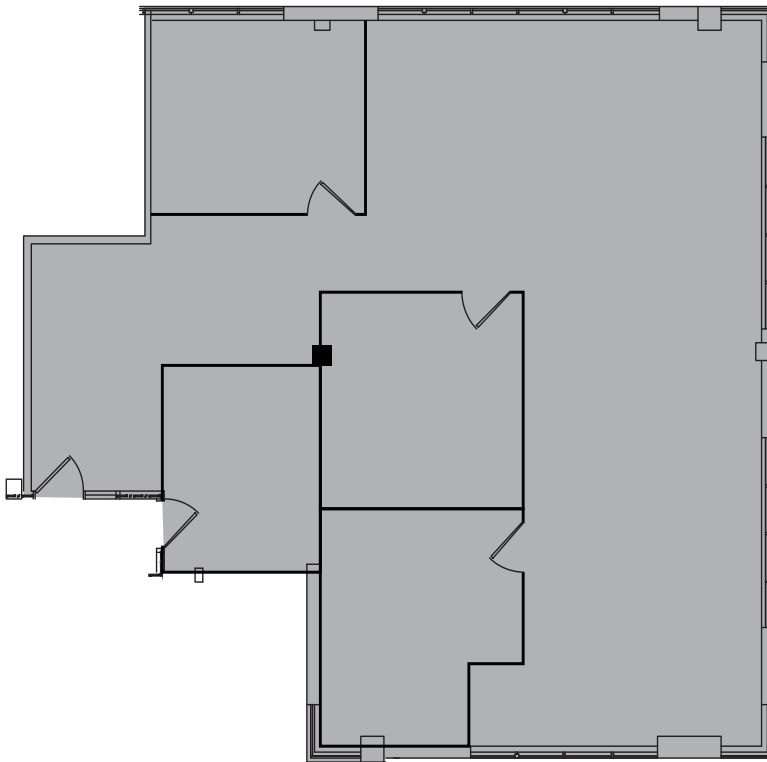
# SUITE 200 FLOOR PLAN - 2,377 RSF

- Suite 200: 2,377 RSF
- Available now
- 2 Private offices
- Conference room
- Large open work area
- Lease rate: Contact broker

[View 3D Tour](#)

## Test Fit Layout

Existing Layout





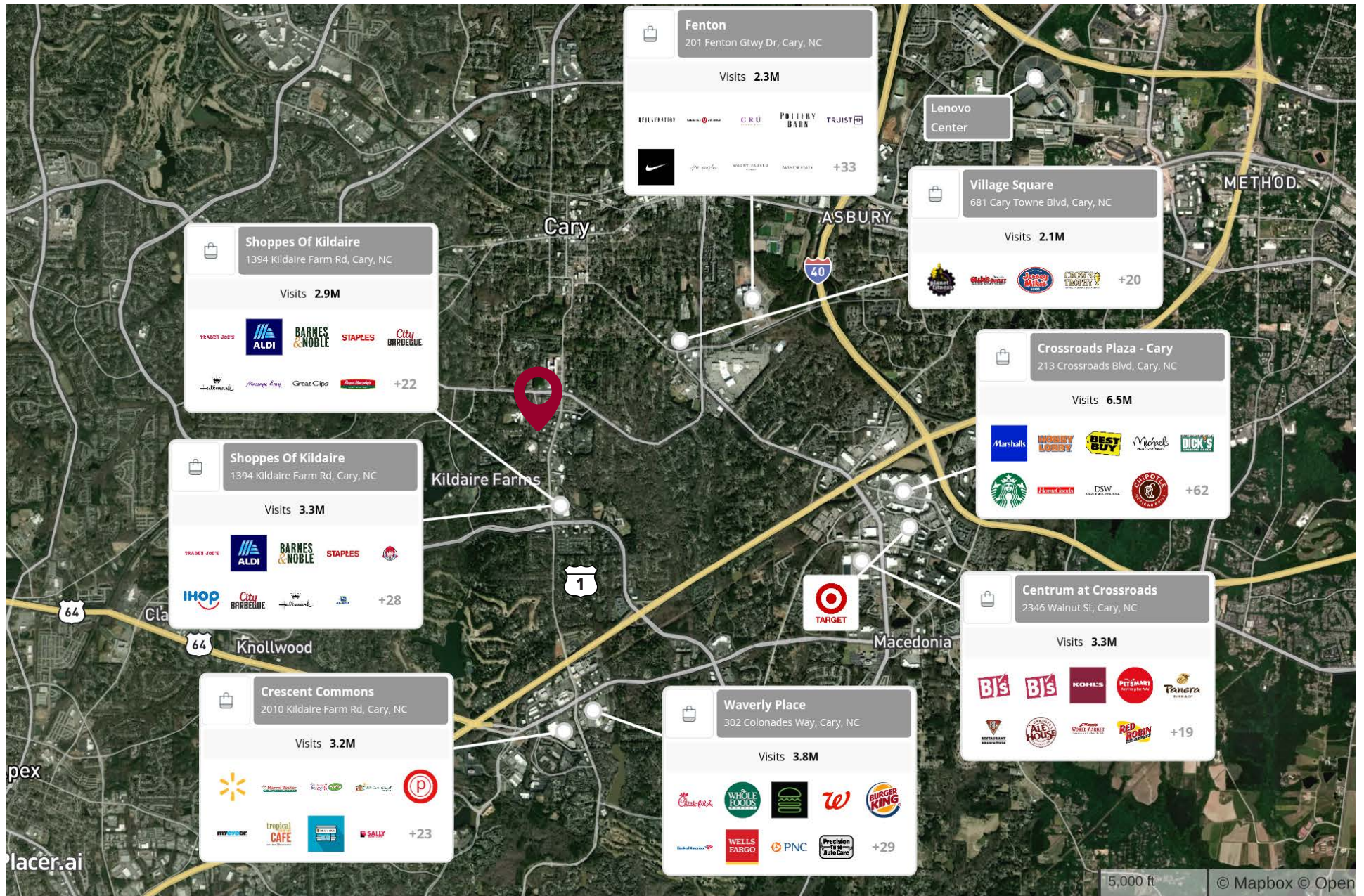
# SUITE 200 PHOTOS



COMMONWEALTH OFFICE PARK • 201 COMMONWEALTH CT • CARY, NC 27511



# AREA OVERVIEW



COMMONWEALTH OFFICE PARK • 201 COMMONWEALTH CT • CARY, NC 27511



Presented by:

Will Judy  
Vice President  
wjudy@lee-associates.com  
O 919.576.2513  
M 919.606.1956

Karah Jennings McConnell  
Executive Vice President, Principal  
kjennings@lee-associates.com  
O 919.576.2502  
M 919.817.0705

Moss Withers, SIOR, MBA  
CEO, Principal  
kjennings@lee-associates.com  
O 919.576.2502  
M 919.817.0705



All information furnished regarding property for sale, rental or financing is from sources deemed reliable, but no warranty or representation is made to the accuracy thereof and same is submitted to errors, omissions, change of price, rental or other conditions prior to sale, lease or financing or withdrawal without notice. No liability of any kind is to be imposed on the broker herein.

100 Walnut Street | Cary, NC 27511 | 919-576-2500 | [lee-associates.com/raleigh](http://lee-associates.com/raleigh)

