

FOR LEASE

POINT 6

24651 Center Ridge Road, Westlake, OH 44145

STEVE ROSS

Vice President
+1 216 363 6423
steve.ross@cbre.com





PROPERTY INFO

Point 6 is located on Center Ridge Road in Westlake Ohio. The building is within close proximity to I-90 and I-480 via Columbia and Clague Road. Multiple restaurants and retailers are also in the area.

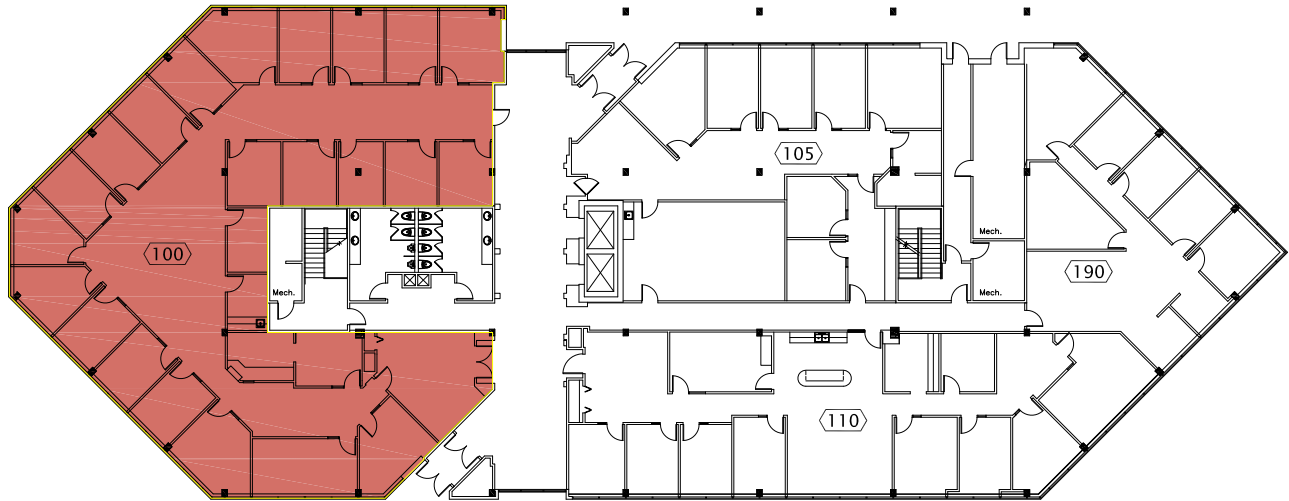
- Rental Rate: \$17.50 per RSF Gross
- Five (5) stories totaling 93,028 RSF with typical floor plates at 20,000 RSF
- Free surface parking located adjacent to the building
- Many additional amenities are located within minutes of the building, including a variety of restaurants and retail shopping
- Easy access to I-90 and RTA bus lines.

FLOOR PLANS & AVAILABILITY

First Floor

Contiguous: 6,396 SF

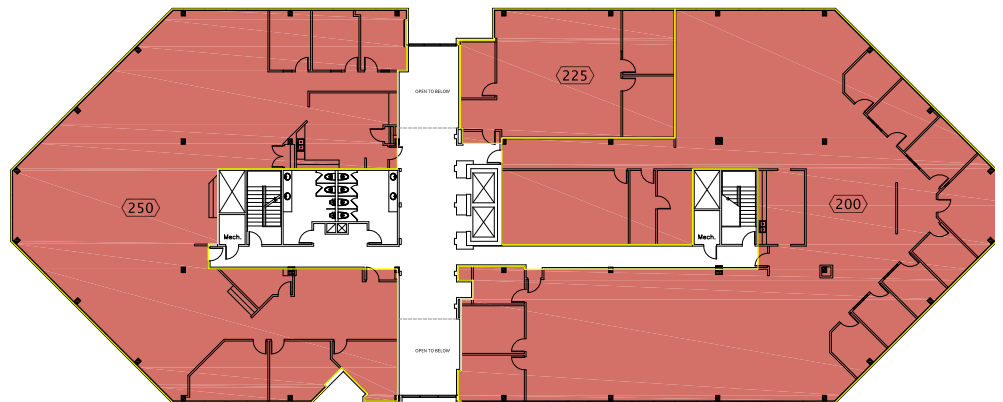
SUITE	SF
100	6,396 SF



Second Floor

Contiguous: 16,885 SF

SUITE	SF
200	8,686 SF
225	1,643 SF
250	6,556 SF

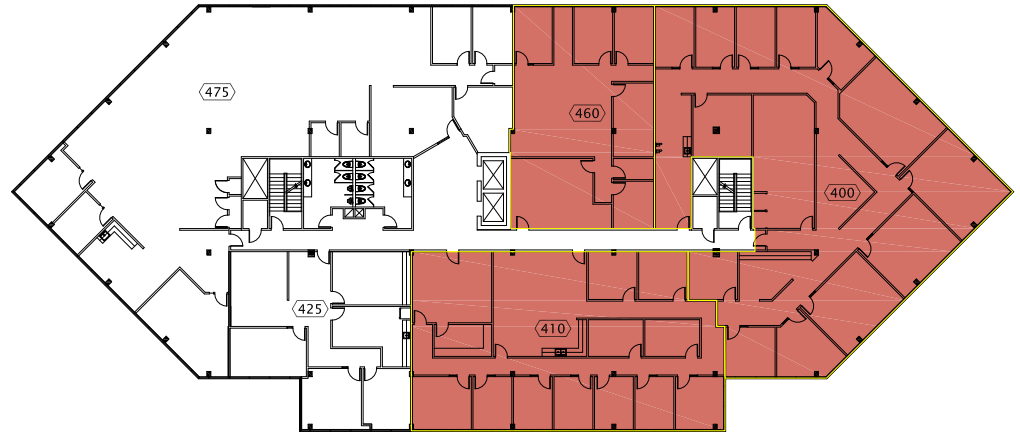


FLOOR PLANS & AVAILABILITY

Fourth Floor

Contiguous: 11,677 SF

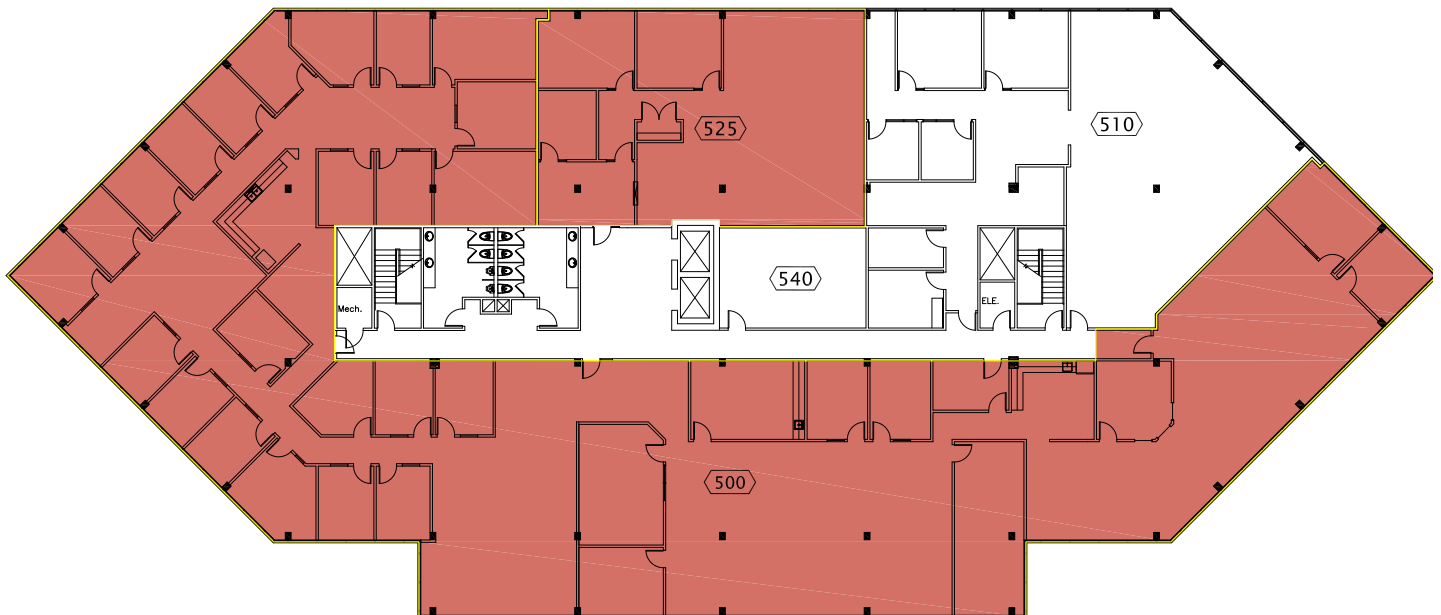
SUITE	SF
400	5,813 SF
410	3,697 SF
460	2,167 SF



Fifth Floor

Contiguous: 15,618 SF

SUITE	SF
500	13,255 SF
525	2,363 SF



QUICK AREA OVERVIEW

2024 Demographics

5 Mile Radius

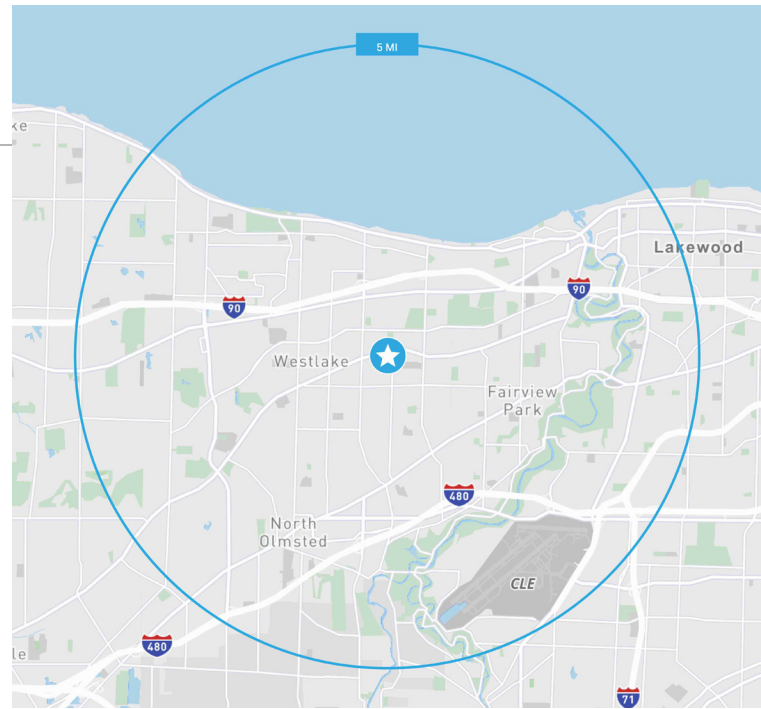
164,381
POPULATION

73,070
HOUSEHOLDS

\$125,969
AVG. HH INCOME

159,733
DAYTIME POPULATION

\$271,209
MEDIAN HOUSING VALUE



POINT 6

24651 Center Ridge Road, Westlake, OH 44145

PLEASE CONTACT:

STEVE ROSS

Vice President
+1 216 363 6423
steve.ross@cbre.com

CBRE, Inc.

950 Main Avenue, Suite 200
Cleveland, OH 44113
+1 216 687 1800

© 2024 CBRE, Inc. All rights reserved. This information has been obtained from sources believed reliable, but has not been verified for accuracy or completeness. You should conduct a careful, independent investigation of the property and verify all information. Any reliance on this information is solely at your own risk. CBRE and the CBRE logo are service marks of CBRE, Inc. All other marks displayed on this document are the property of their respective owners, and the use of such logos does not imply any affiliation with or endorsement of CBRE. Photos herein are the property of their respective owners. Use of these images without the express written consent of the owner is prohibited. Licensed Real Estate Broker