



NEW SOUTHERN
COMMERCIAL REAL ESTATE

LEASE



418

SPID

*418 South Padre Island Drive
Corpus Christi, TX 78401*

Nestled between Old Brownsville Road and Bear Lane, on the bustling South Padre Island Drive, lies a property that boasts of unparalleled exposure. This prime location is a gem for businesses seeking high visibility and accessibility. The property's unique positioning allows for both front and rear access directly off South Padre Island Drive, ensuring seamless ingress and egress for visitors or customers.

The area is a blend of commercial vibrancy and residential tranquility, making it an ideal spot for a variety of ventures. Whether you're looking to set up a retail store, a restaurant, or an office space, this property offers the perfect canvas to paint your entrepreneurial dreams on.

ANNUAL RENT
\$146,250.00

Rental Area:
9,750 Sq. Ft.

Contact:

361-834-6333

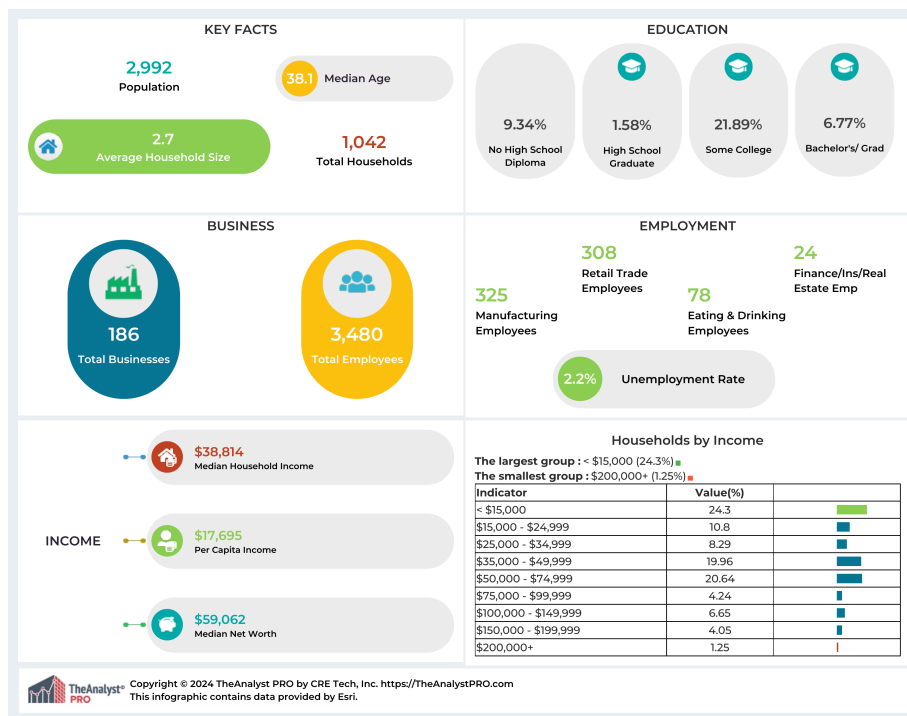
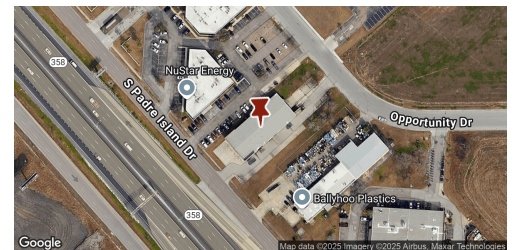
WADE SPENST

CCIM, BROKER
License: 677021

wade@newsoutherncommercial.com



NS
NEW SOUTHERN
COMMERCIAL REAL ESTATE



This information has been obtained from sources believed reliable. We have not verified it and make no guarantee, warranty or representation about it. Any projections, opinions, assumptions or estimates used are for example only and do not represent the current or future performance of the property. You and your advisors should conduct a careful, independent investigation of the property to determine to your satisfaction the suitability of the property for your needs. Photos herein are the property of their respective owners and use of these images without the express written consent of the owner is prohibited.

Contact:
361-834-6333
WADE SPENST
License: 677021
wade@newsoutherncommercial.com