

# 2.37 ACRE WEST BLVD CHARLOTTE MULTI-FAMILY INFILL LAND FOR SALE

3225 WEST BLVD, CHARLOTTE NC 28208



## PROPERTY DETAILS

- Price: \$500,000
- Acreage: +/-2.37
- Access: Curb cut off of West Blvd.
- Zoning: N2-B
- PID: 14308112

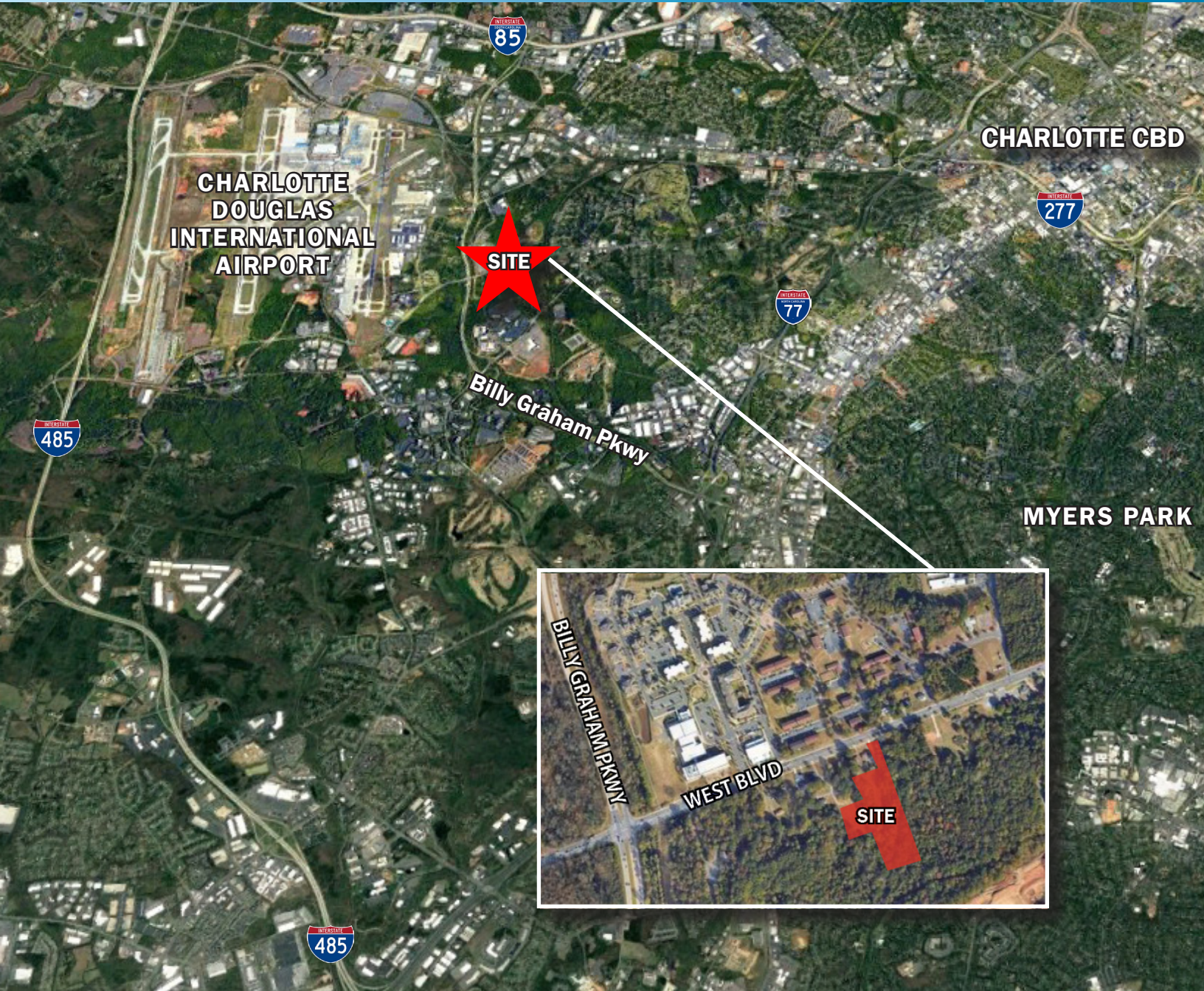
## PROPERTY HIGHLIGHTS

- Solid Fill Likely On Site
- Opportunity Zone Charlotte Census Tract 39.03
- Located in rapidly developing area, close to Charlotte Douglas & Billy Graham Parkway
- 2.5 miles to I-77, 3.5 miles to Uptown & South End Charlotte
- 

## BROKER CONTACT

**SHAWN GEORGE** | 2049 Birchside Drive | Charlotte, NC 28205 | 704.503.9608 | [queencitycommercial@gmail.com](mailto:queencitycommercial@gmail.com)  
[www.QueenCityCRE.com](http://www.QueenCityCRE.com)

# 2.37 ACRE WEST BLVD. CHARLOTTE MULTI-FAMILY INFILL LAND FOR SALE 3225 WEST BLVD, CHARLOTTE NC 28208

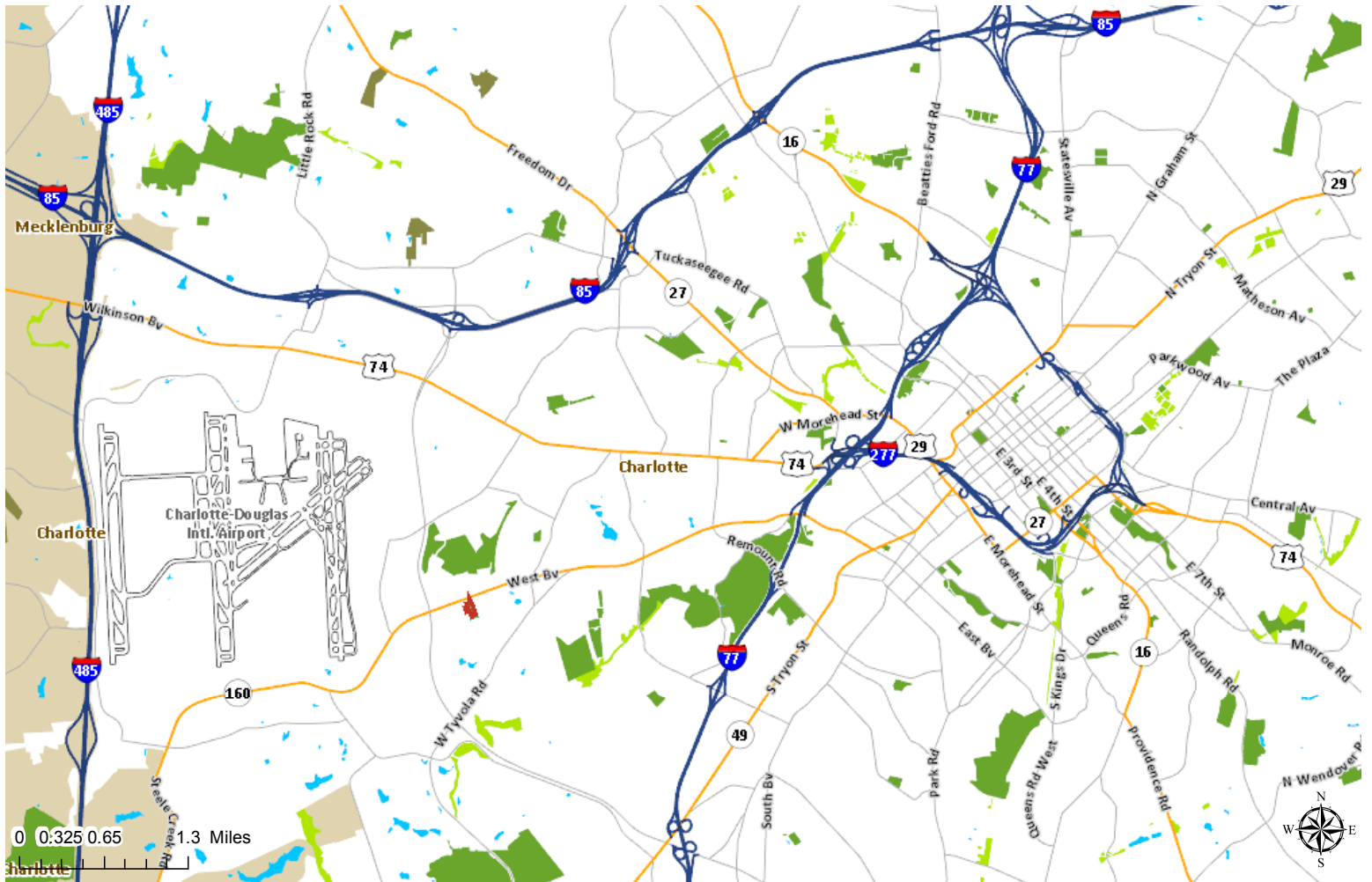


	1 MILE	3 MILES	5 MILES
TOTAL POPULATION	5,547	68,504	185,659
AVERAGE HH INCOME	\$54,087	\$68,438	\$92,713
MEDIAN HH INCOME	\$40,039	\$55,350	\$66,476
BUSINESS ESTABLISHMENTS	466	4,535	13,743
DAYTIME EMPLOYMENT	11,483	59,547	193,505

# 2.37 ACRE WEST BLVD. CHARLOTTE MULTI-FAMILY INFILL LAND FOR SALE

3225 WEST BLVD, CHARLOTTE NC 28208

WEST BLVD LAND ASSEMBLAGE - 2.92 ACRES ZONED R-22 MF



**SHAWN GEORGE** | 2049 Birchside Drive | Charlotte, NC 28205 |  
704.503.9608 | [queencitycommercial@gmail.com](mailto:queencitycommercial@gmail.com) | [www.QueenCityCRE.com](http://www.QueenCityCRE.com)

"The information contained herein was obtained from sources believed reliable, however, no guarantees, warranties, or representations have been made as to the completeness or accuracy thereof. No liability assumed for error or omissions."