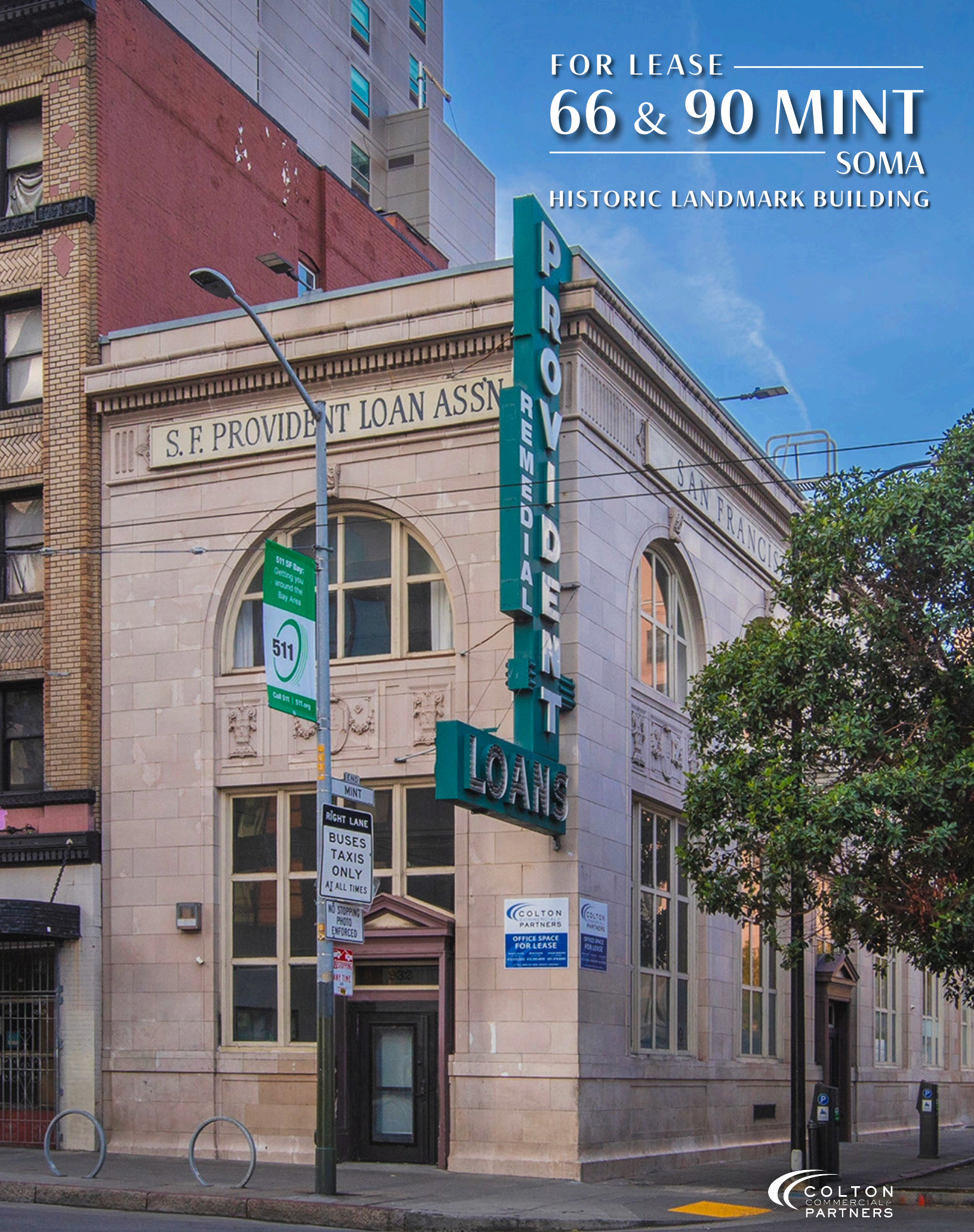


FOR LEASE —
66 & 90 MINT
SOMA
HISTORIC LANDMARK BUILDING



FOR LEASE

66 MINT

SOMA

PROPERTY HIGHLIGHTS

THIRD FLOOR

+/- 5,033 RSF



3rd Floor- Full Floor Identity

One (1) glass conference room

One (1) glass meeting room

Open Office

Kitchen

Polished concrete flooring

Operable Windows

Great natural light

High exposed ceilings



VIRTUAL TOUR
LINK

FOR LEASE

66 MINT

SOMA

PROPERTY PHOTOS

THIRD FLOOR

+/- 5,033 RSF



FOR LEASE

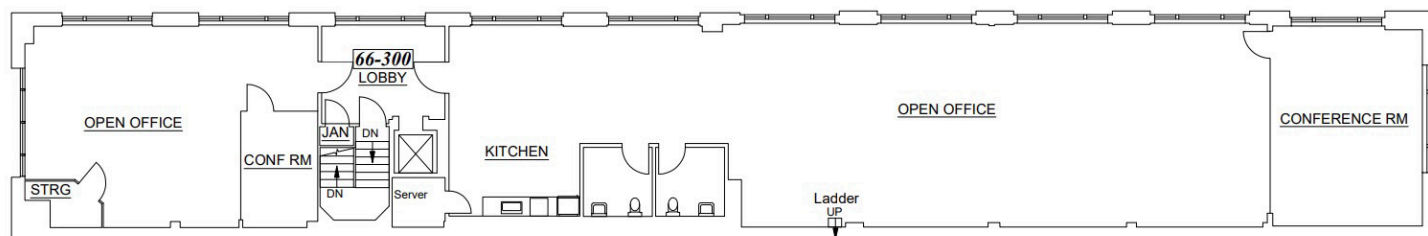
66 MINT

SOMA

FLOOR PLAN

THIRD FLOOR

+/- 5,033 RSF



FOR LEASE

90 MINT

SOMA

PROPERTY HIGHLIGHTS

GROUND FLOOR

+/- 1,723 RSF



Ground Floor Retail + Basement Storage

18' Ceilings

Marble Floors

Operable Windows

Full Basement Storage

Vault Area



FOR LEASE

90 MINT

SOMA

PROPERTY PHOTOS

GROUND FLOOR

+/- 1,723 RSF



FOR LEASE

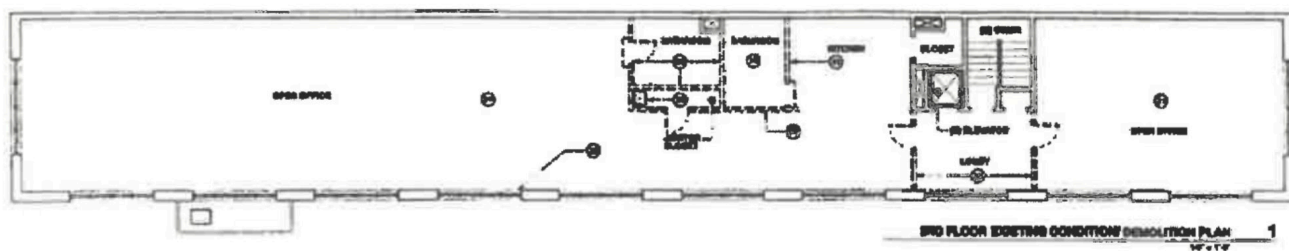
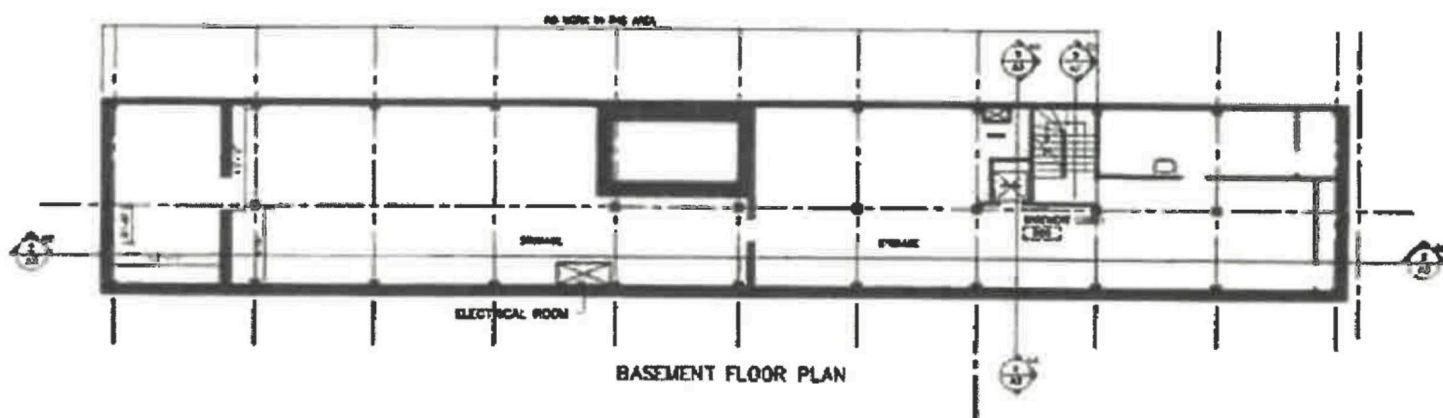
90 MINT

SOMA

FLOOR PLAN

GROUND FLOOR

+/- 1,723 RSF



FOR LEASE

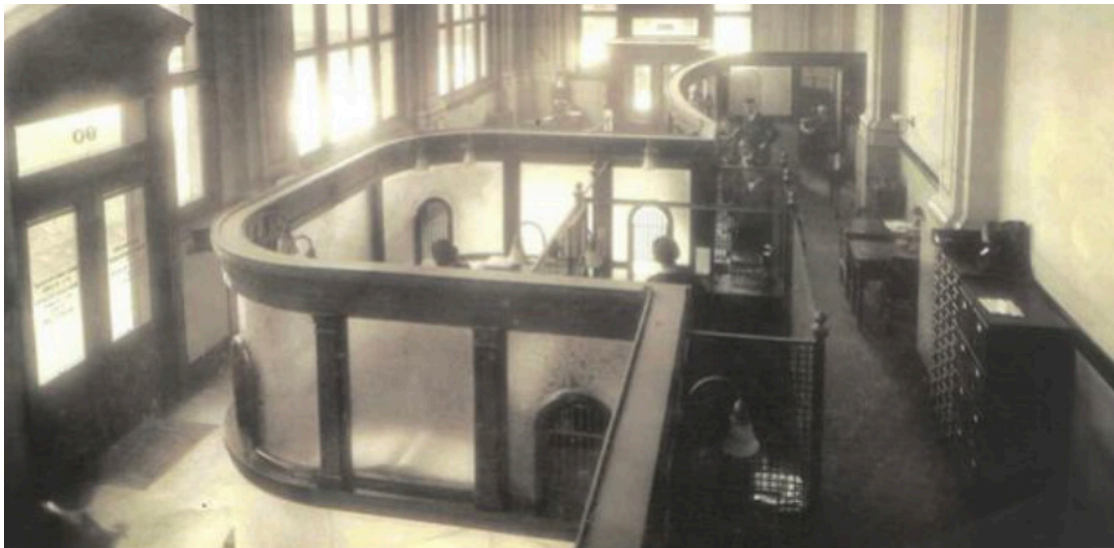
BUILDING HISTORY

66 & 90 MINT

SOMA

HISTORIC LANDMARK BUILDING

Stretching from 66 Mint to 923 Mission Street has been home of San Francisco Provident since 1914. The historical landmark building and business was founded by such storied San Francisco civic leading families as the Fleishaker's, the Hellman's and the Crockers, just to name a few. The building sold in 1951 and has been owned and operated by the same family for 4 generations.

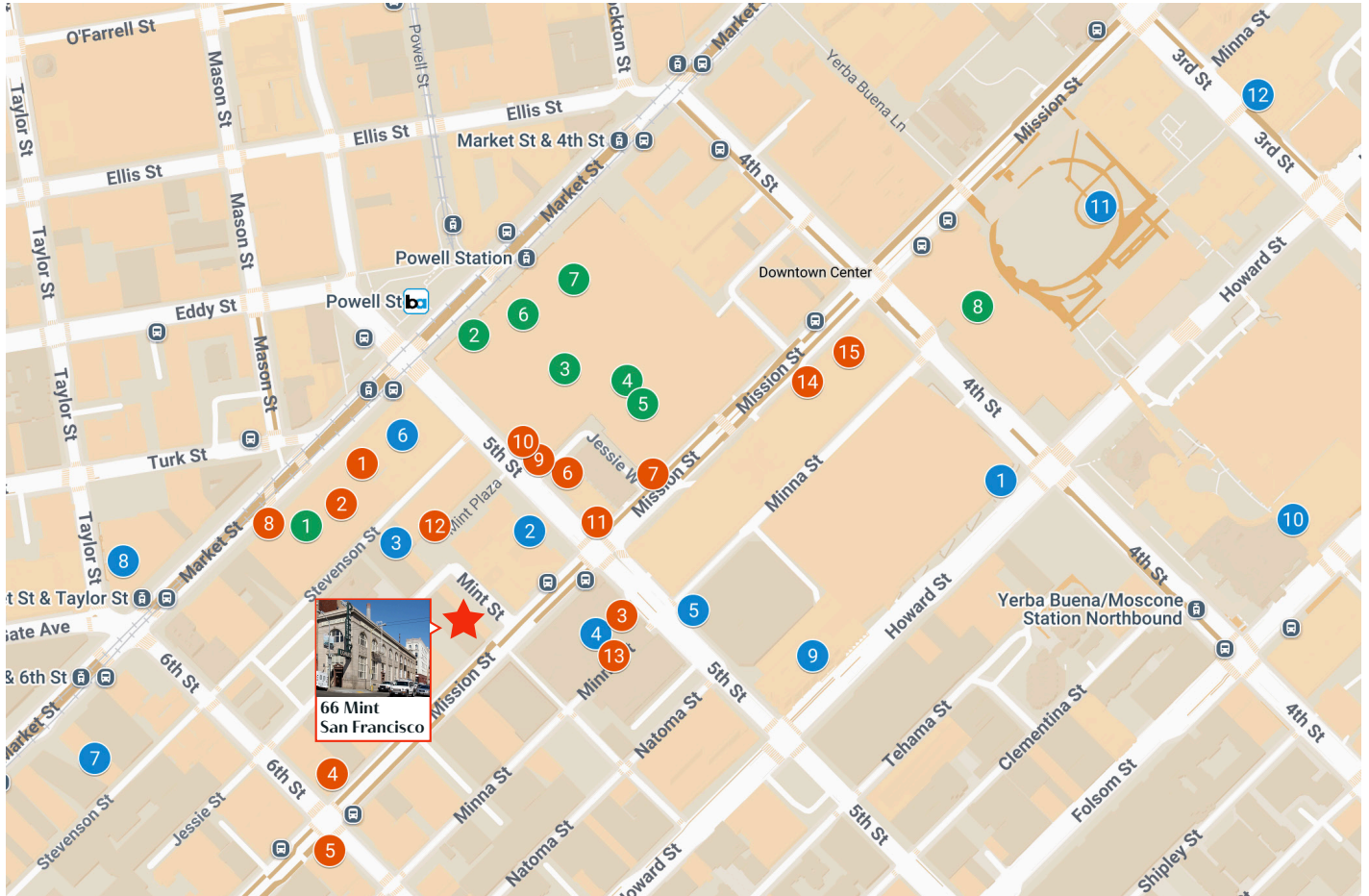


FOR LEASE

NEIGHBORHOOD MAP

66 & 90 MINT

SOMA



NEARBY:

- 1 Moscone West
- 2 The San Francisco Mint
- 3 Minerva University
- 4 San Francisco Chronicle
- 5 University of Pacific (UOP), San Francisco
- 6 Federal Trade Commission
- 7 International Art Museum of America
- 8 The Warfield
- 9 InterContinental San Francisco
- 10 Yerba Buena Ice Skating & Bowling Center
- 11 Yerba Buena Gardens
- 12 San Francisco Museum of Modern Art

RESTAURANTS & CAFES:

- 1 The Melt
- 2 Casa Borinqueña
- 3 Java Trading Co.
- 4 The Bite
- 5 Miss Saigon
- 6 Zevi Cafe & Bistro
- 7 Executive Order Bar & Lounge
- 8 Snöberg
- 9 The Cavalier
- 10 S&R Lounge
- 11 Soma Restaurant & Bar
- 12 Burma Love
- 13 Off the Grid: 5th & Minna
- 14 Mariposas
- 15 Mel's Drive-In

SHOPPINGS:

- 1 IKEA
- 2 Ray-Ban
- 3 Foot Locker
- 4 H&M
- 5 BOSS Shop - Macy's Shop
- 6 Union Square San Francisco Centre
- 7 Jo Malone London at Bloomingdale's
- 8 Metreon



All material presented herein is intended for informational purposes only. Information is compiled from sources deemed reliable but is subject to errors, omissions, changes in price, condition, sale, or withdraw without notice. No statement is made as to accuracy of any description. All measurements and square footages are approximate. Exact dimensions can be obtained by retaining the services of an architect or engineer. This is not intended to solicit property already listed.

S. F. PROVIDENT LOAN ASSN.

FOR LEASE
66 & 90 MINT
SOMA
HISTORIC LANDMARK BUILDING

PLEASE CONTACT EXCLUSIVE BROKERS:

Bradley L. Colton

(415) 834-1600

bcolton@coltoncommercialsf.com

License #: 00805116

Bryan B. Colton

(415) 595-6959

bryancolton@coltoncommercialsf.com

License #: 02111407

Casaldra Andreassen

(631)-478-8343

casaldra@coltoncommercialsf.com

License #: 02028086

Exclusively Represented By:



San Francisco, CA 94104
(415) 834-1600