



## PROPERTY HIGHLIGHTS

3,600 SF endcap with patio

Anchored by Sprouts Farmers Market

Located at the NEC Williamson Blvd & Cornerstone Blvd

Shared access with Tomoka Town Center

SEC LPGA BLVD. & WILLIAMSON BLVD, DAYTONA BEACH, FL 32114

# SHOPS OF WILLIAMSON CROSSING

JOIN SPROUTS, HYATT HOUSE AND TESLA "COMING SOON" | FOR LEASE

STACY MILLER MENENDEZ 321.303.0884 SMENENDEZ@ATLANTICRETAIL.COM

## PROPERTY DETAILS

SHOPS OF WILLIAMSON CROSSING • DAYTONA BEACH • JOIN SPROUTS, HYATT HOUSE AND TESLA "COMING SOON" | FOR LEASE





### PROPERTY HIGHLIGHTS

- 3,600 sf endcap with patio available
- Anchored by Sprouts Farmers Market opening Q1 2026
- Located at the NEC Williamson Blvd & Cornerstone Blvd with access to LPGA and Clyde Morris Blvd
- Neighbors Tomoka Town Center and Tanger Outlets (10.5 M visits collectively per Placer ai)
- High growth residential with +/- 13,578 units planned & construction

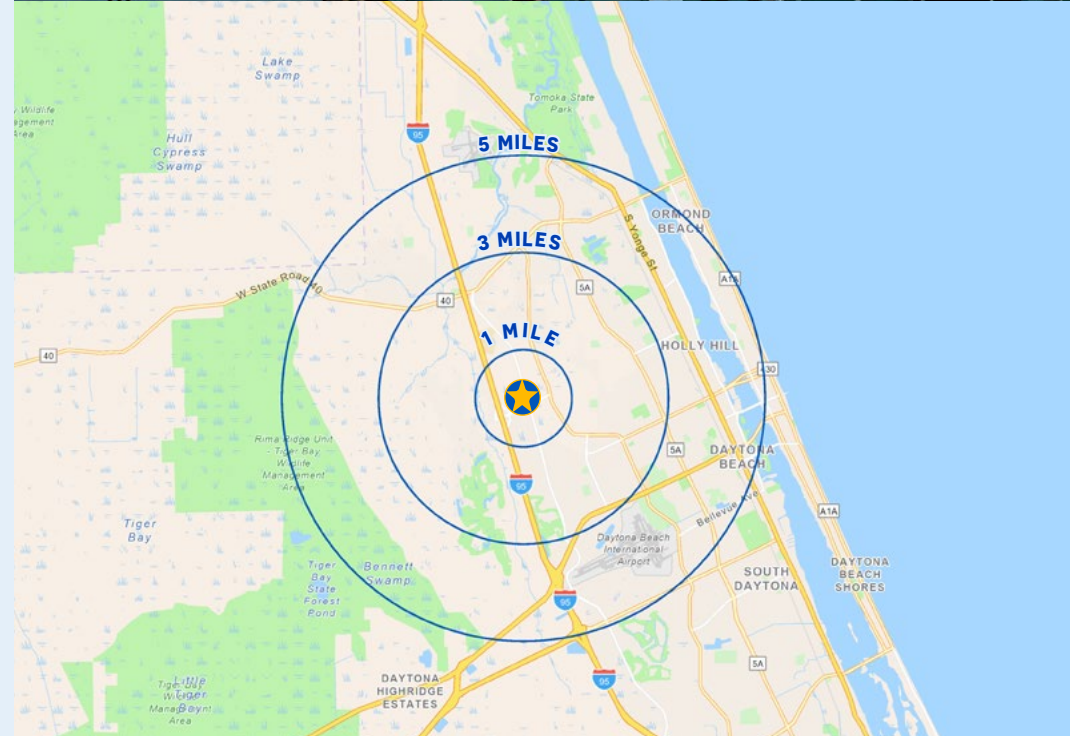
### AREA RETAILERS- COMING SOON



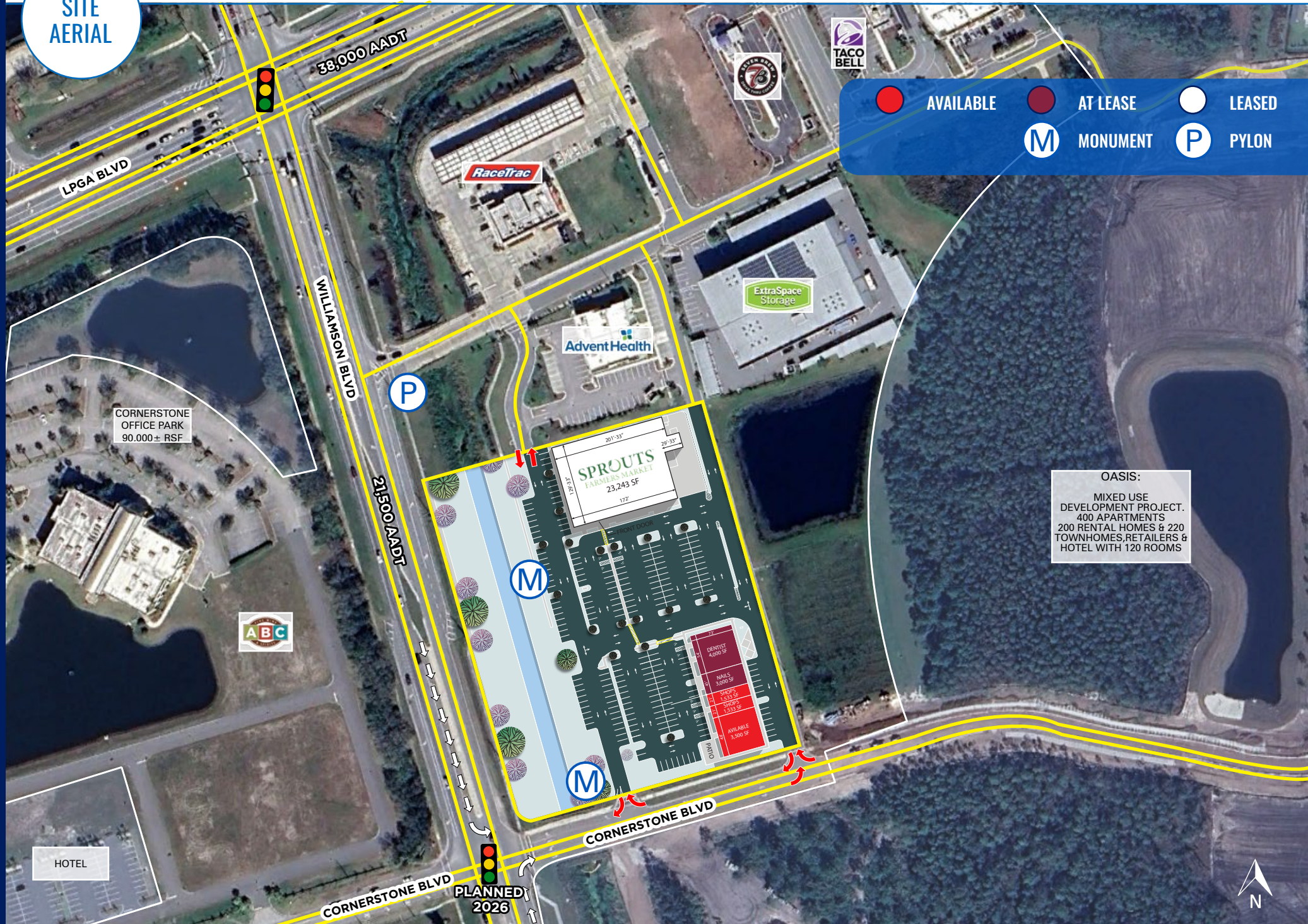
### DEMOGRAPHICS

	1 MILE	3 MILE	5 MILE
 <b>POPULATION</b>	1,894	50,806	116,855
 <b>DAYTIME POPULATION</b>	6,188	64,650	151,525
 <b>AVERAGE HH INCOME</b>	\$78,628	\$80,078	\$80,898
 <b>TOTAL HOUSEHOLDS</b>	961	23,000	50,508

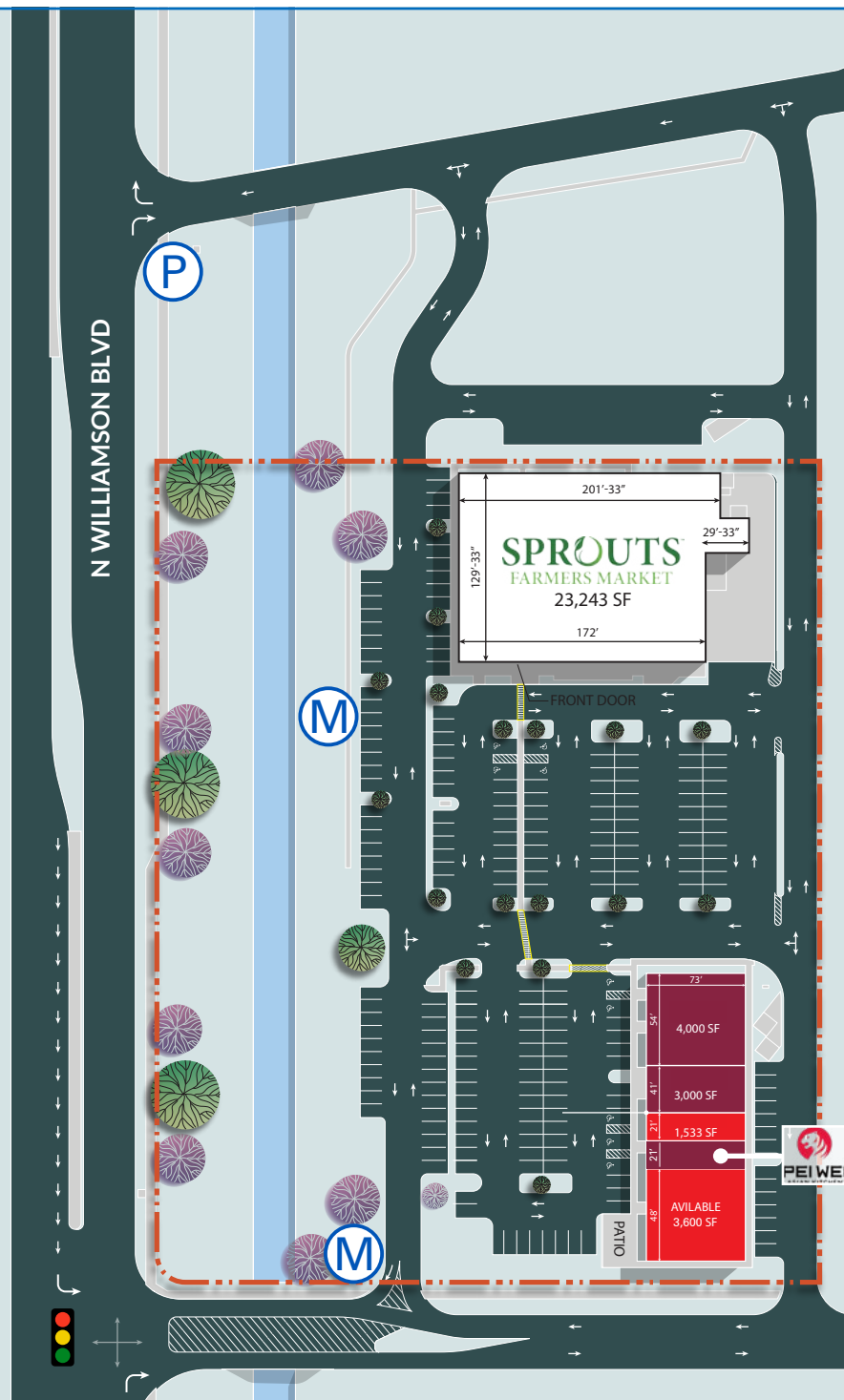
SOURCE: ESRI 2024



SITE  
AERIAL



SITE PLAN



- AVAILABLE
- AT LEASE
- LEASED
- M MONUMENT
- P PYLON

SUITE 1	DENTIST	3,600 SF
SUITE 2	NAIL SALON	3,000 SF
SUITE 3	AVAILABLE	1,062 SF
SUITE 4	PEI WEI	2,201 SF
SUITE 5	AVAILABLE	3,600 SF PLUS PATIO

PROPOSED BUILDING  
13,658 SF

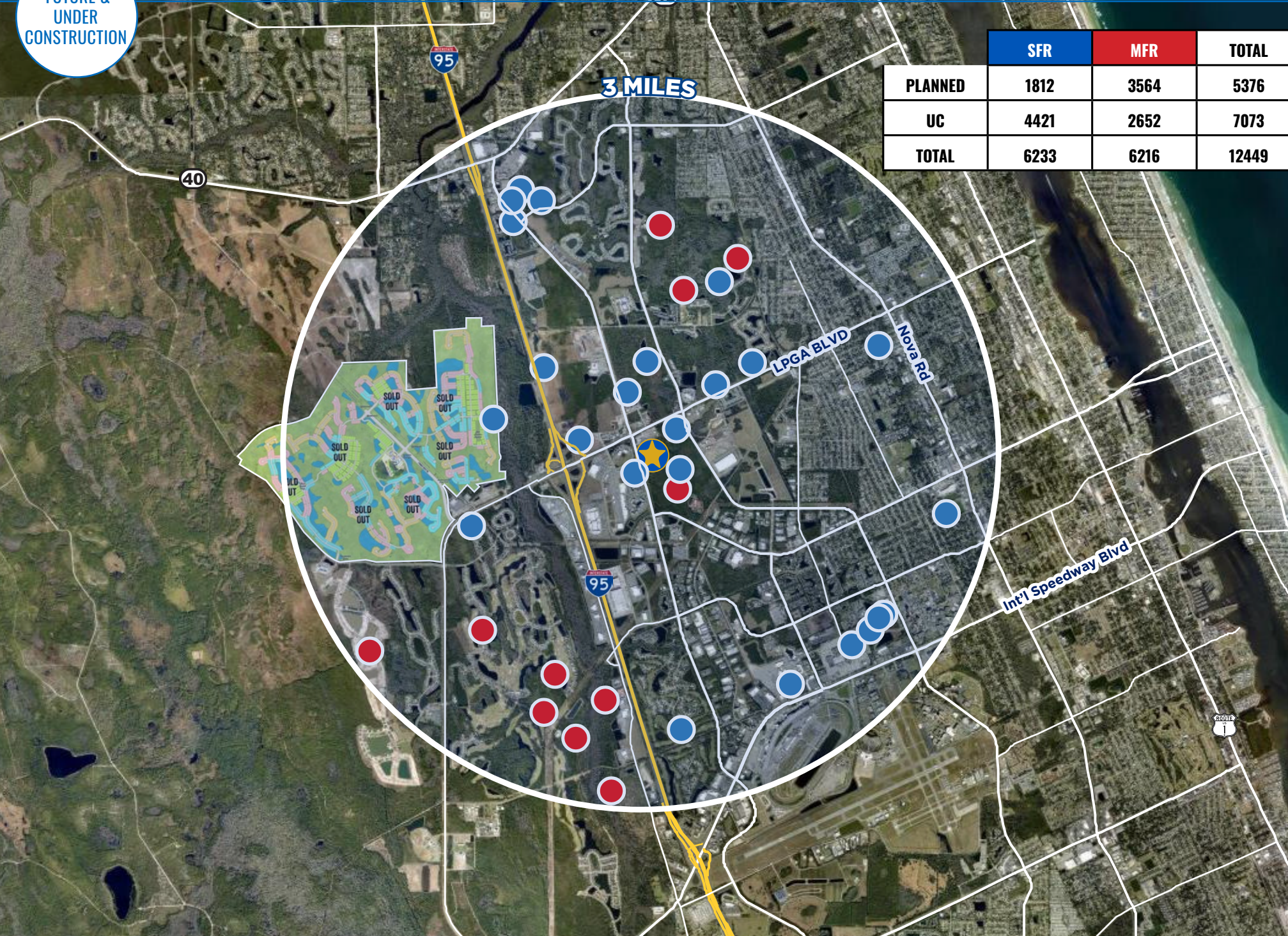


MARKET  
AERIAL



FUTURE &  
UNDER  
CONSTRUCTION

SHOPS OF WILLIAMSON CROSSING • DAYTONA BEACH • JOIN SPROUTS, HYATT HOUSE AND TESLA “COMING SOON” | FOR LEASE



SEC LPGA BLVD. & WILLIAMSON BLVD, DAYTONA BEACH, FL 32114

# SHOPS OF WILLIAMSON CROSSING

**JOIN SPROUTS, HYATT HOUSE AND TESLA “COMING SOON” | FOR LEASE**

**STACY MILLER MENENDEZ**

321.303.0884

SMENENDEZ@ATLANTICRETAIL.COM



**ORLANDO**

1180 SOLANA AVENUE

WINTER PARK FL, 32789

407.919.6575

**ALBANY**

**ATLANTA**

**BOSTON**

**CHARLOTTE**

**LOS ANGELES**

**NEW YORK CITY**

**PITTSBURGH**

**WEST PALM BEACH**

**WWW.ATLANTICRETAIL.COM**

LINKEDIN.COM/COMPANY/ATLANTIC-RETAIL-PROPERTIES

INSTAGRAM.COM/ATLANTIC\_RETAIL/

REALTY  
RESOURCES

CHAINLINKS  
RETAIL ADVISORS