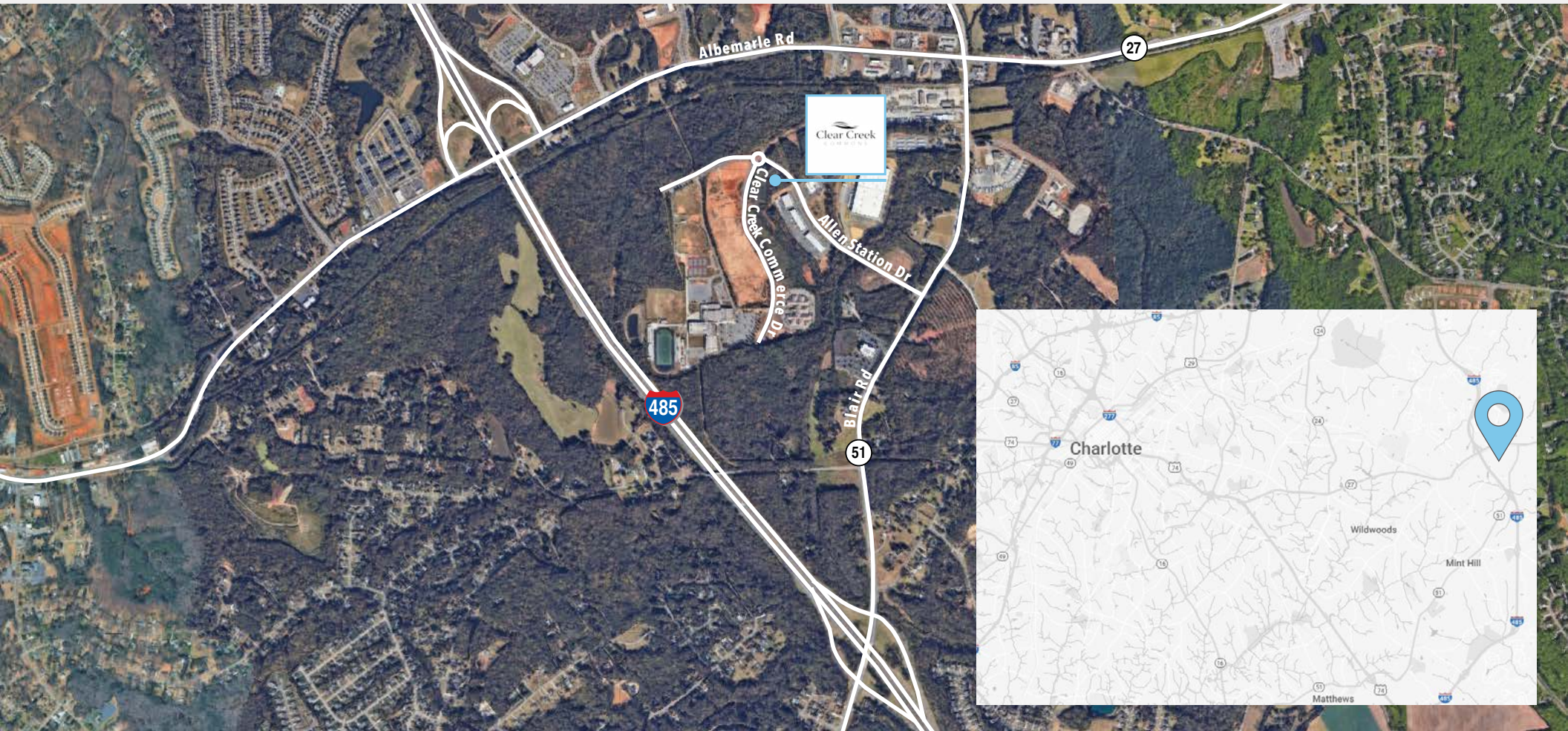




2,393 - 22,000 SF AVAILABLE  
MINT HILL, NC

FOUNDRY  
COMMERCIAL

# LOCATION & ACCESS



FOR MORE INFORMATION, PLEASE CONTACT:

**BEN ROWELL | 704.319.5080**

Vice President

[ben.rowell@foundrycommercial.com](mailto:ben.rowell@foundrycommercial.com)

Licensed Real Estate Broker

**RICHARD COEN | 843.696.6700**

Associate

[richard.coen@foundrycommercial.com](mailto:richard.coen@foundrycommercial.com)

Licensed Real Estate Broker

**CASEY MULHERN | 704.705.1182**

Senior Vice President

[casey.mulhern@foundrycommercial.com](mailto:casey.mulhern@foundrycommercial.com)

Licensed Real Estate Broker

**FOUNDRY**  
COMMERCIAL

[foundrycommercial.com](http://foundrycommercial.com)

# SITE PLAN



## AVAILABILITIES

± 2,393 - 9,735 SF

 [Building A](#)

± 4,033 - 22,422 SF

 [Building B](#)

± 2,564 - 14,266 SF

 [Building C](#)

± 2,575 - 6,508 SF

 [Building D](#)

FOR MORE INFORMATION, PLEASE CONTACT:

**BEN ROWELL | 704.319.5080**

Vice President

[ben.rowell@foundrycommercial.com](mailto:ben.rowell@foundrycommercial.com)

Licensed Real Estate Broker

**RICHARD COEN | 843.696.6700**

Associate

[richard.coen@foundrycommercial.com](mailto:richard.coen@foundrycommercial.com)

Licensed Real Estate Broker

**CASEY MULHERN | 704.705.1182**

Senior Vice President

[casey.mulhern@foundrycommercial.com](mailto:casey.mulhern@foundrycommercial.com)

Licensed Real Estate Broker

**FOUNDRY**  
COMMERCIAL

[foundrycommercial.com](http://foundrycommercial.com)

# BUILDING A *SF AVAILABILITY*

## ± 2,393 - 9,735 SF

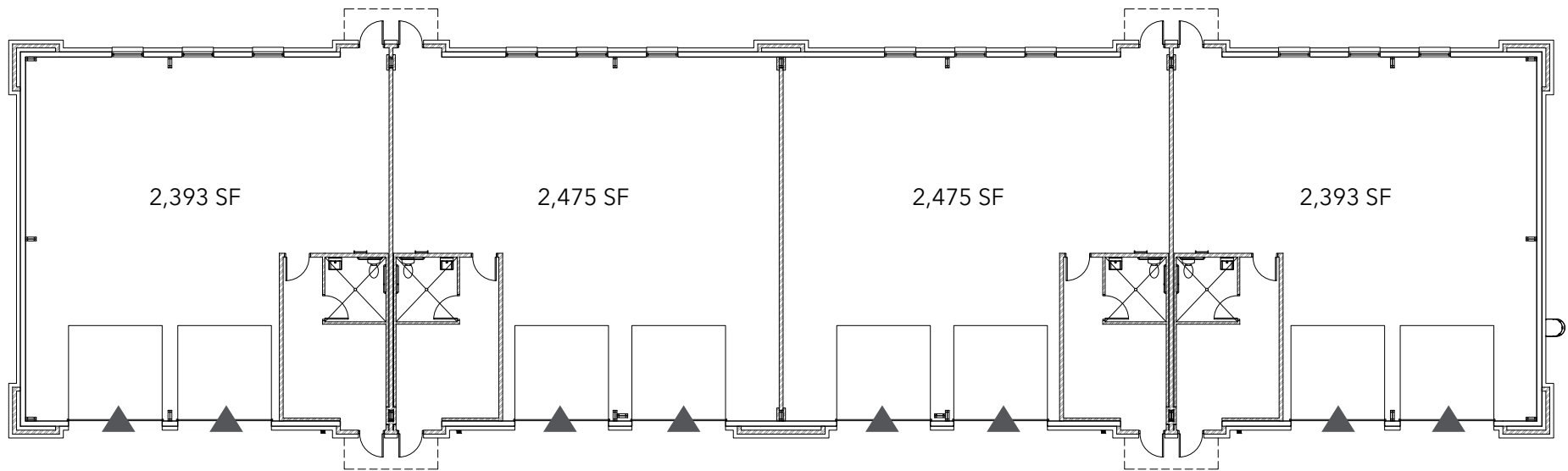
↑ BACK TO  
SITE PLAN

*SUITE SPECS*

**OFFICE** ± 332 SF

**DRIVE-IN DOORS** 2

**CLEAR HEIGHT** 19' - 20'



▲ DRIVE-IN DOOR

FOR MORE INFORMATION, PLEASE CONTACT:

**BEN ROWELL | 704.319.5080**

Vice President

ben.rowell@foundrycommercial.com

Licensed Real Estate Broker

**RICHARD COEN | 843.696.6700**

Associate

richard.coen@foundrycommercial.com

Licensed Real Estate Broker

**CASEY MULHERN | 704.705.1182**

Senior Vice President

casey.mulhern@foundrycommercial.com

Licensed Real Estate Broker

**FOUNDRY**  
COMMERCIAL

foundrycommercial.com

# BUILDING B *SF AVAILABILITY*

## ± 4,033 - 22,422 SF

↑ BACK TO  
SITE PLAN

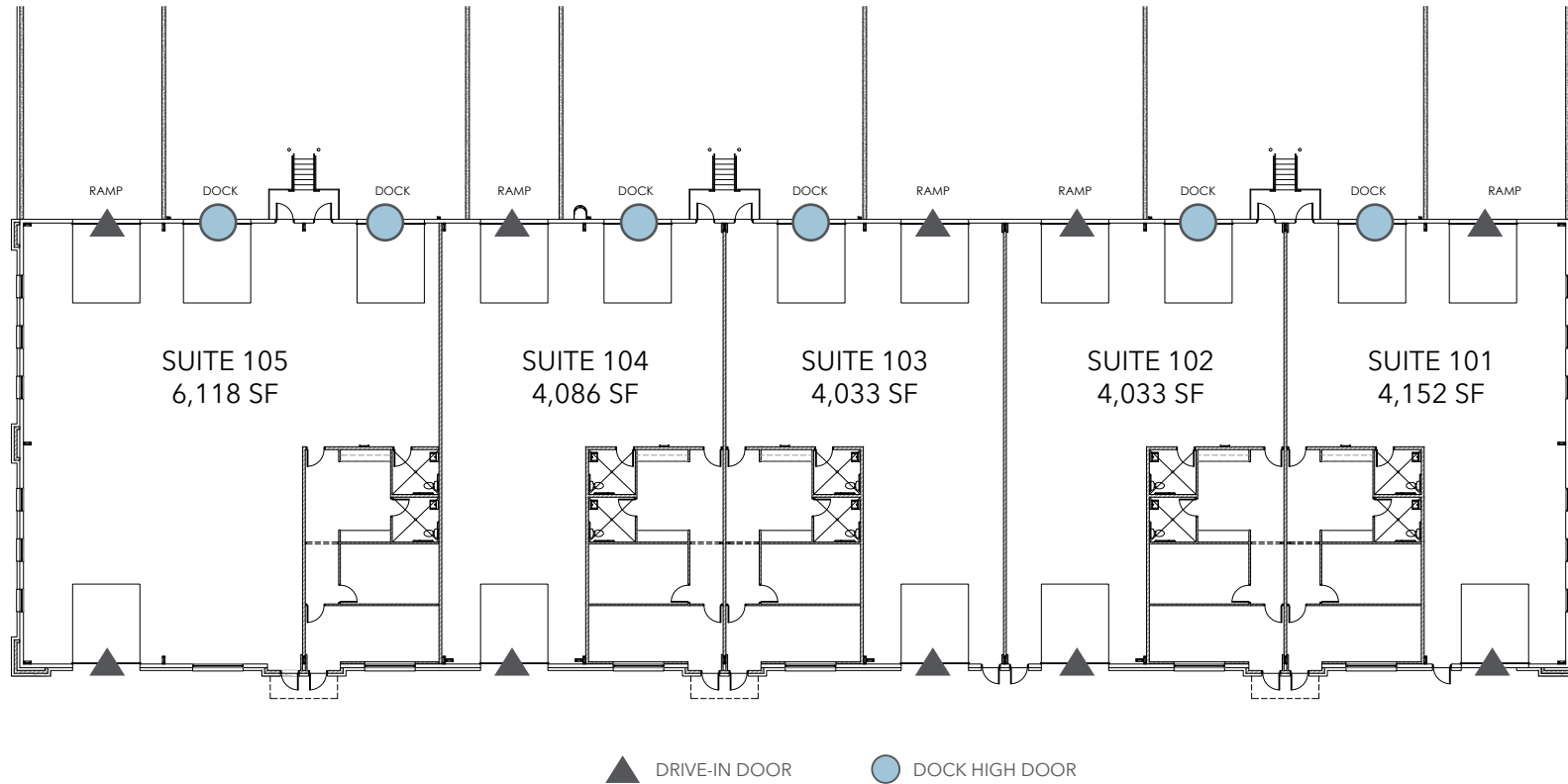
*SUITE SPECS*

**OFFICE** ± 995 SF

**DRIVE-IN DOORS** 2

**DOCK HIGH DOORS** 1 - 2

**CLEAR HEIGHT** 19' - 20'



FOR MORE INFORMATION, PLEASE CONTACT:

**BEN ROWELL | 704.319.5080**

Vice President

ben.rowell@foundrycommercial.com

Licensed Real Estate Broker

**RICHARD COEN | 843.696.6700**

Associate

richard.coen@foundrycommercial.com

Licensed Real Estate Broker

**CASEY MULHERN | 704.705.1182**

Senior Vice President

casey.mulhern@foundrycommercial.com

Licensed Real Estate Broker

**FOUNDRY**  
COMMERCIAL

foundrycommercial.com

# BUILDING C SF AVAILABILITY

## ± 2,564 - 14,226 SF

↑ BACK TO  
SITE PLAN

SUITE SPECS

OFFICE

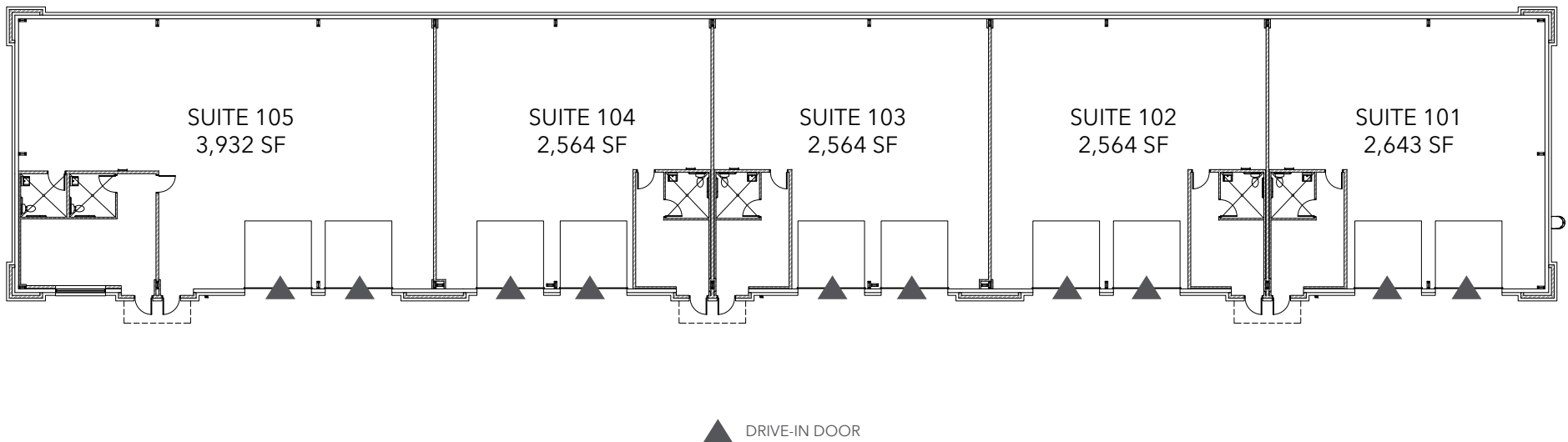
± 332 - 613 SF

DRIVE-IN DOORS

2

CLEAR HEIGHT

19' - 20'



FOR MORE INFORMATION, PLEASE CONTACT:

**BEN ROWELL | 704.319.5080**

Vice President

ben.rowell@foundrycommercial.com

Licensed Real Estate Broker

**RICHARD COEN | 843.696.6700**

Associate

richard.coen@foundrycommercial.com

Licensed Real Estate Broker

**CASEY MULHERN | 704.705.1182**

Senior Vice President

casey.mulhern@foundrycommercial.com

Licensed Real Estate Broker

**FOUNDRY**  
COMMERCIAL

foundrycommercial.com

# BUILDING D *SF AVAILABILITY*

## ± 2,575 - 6,508 SF

↑ **BACK TO  
SITE PLAN**

*SUITE SPECS*

**OFFICE**

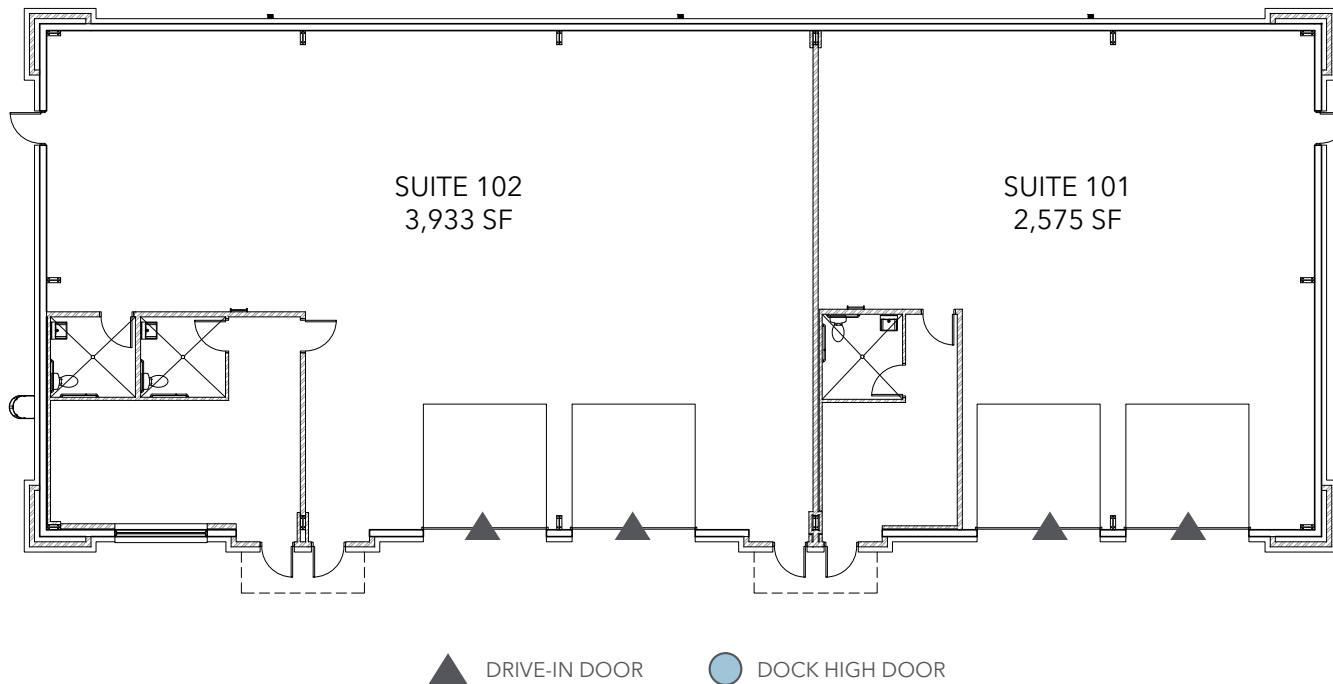
± 332 - 613 SF

**DRIVE-IN DOORS**

2

**CLEAR HEIGHT**

19' - 20'



FOR MORE INFORMATION, PLEASE CONTACT:

**BEN ROWELL | 704.319.5080**

Vice President

ben.rowell@foundrycommercial.com

Licensed Real Estate Broker

**RICHARD COEN | 843.696.6700**

Associate

richard.coen@foundrycommercial.com

Licensed Real Estate Broker

**CASEY MULHERN | 704.705.1182**

Senior Vice President

casey.mulhern@foundrycommercial.com

Licensed Real Estate Broker

**FOUNDRY**  
COMMERCIAL

foundrycommercial.com



FOR MORE INFORMATION, PLEASE CONTACT:

**BEN ROWELL | 704.319.5080**

Vice President

[ben.rowell@foundrycommercial.com](mailto:ben.rowell@foundrycommercial.com)

Licensed Real Estate Broker

**RICHARD COEN | 843.696.6700**

Associate

[richard.coen@foundrycommercial.com](mailto:richard.coen@foundrycommercial.com)

Licensed Real Estate Broker

**CASEY MULHERN | 704.705.1182**

Senior Vice President

[casey.mulhern@foundrycommercial.com](mailto:casey.mulhern@foundrycommercial.com)

Licensed Real Estate Broker

**FOUNDRY**  
COMMERCIAL

[foundrycommercial.com](http://foundrycommercial.com)

Although the information contained herein was provided by sources believed to be reliable, Foundry Commercial makes no representation, expressed or implied, as to its accuracy and said information is subject to errors, omissions or changes.