

# SPACE CENTER FONTANA

RIVERSIDE

11070 Mulberry Avenue  
Fontana, CA 92337



FOR LEASE

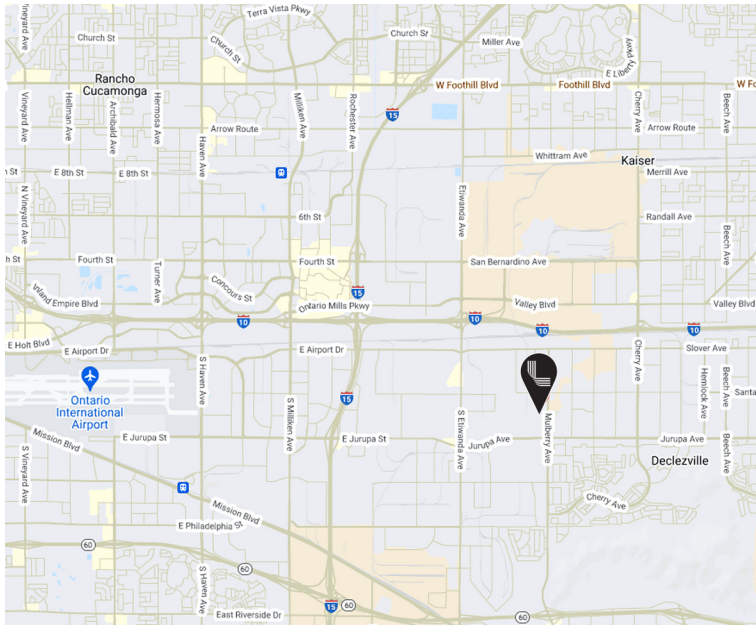
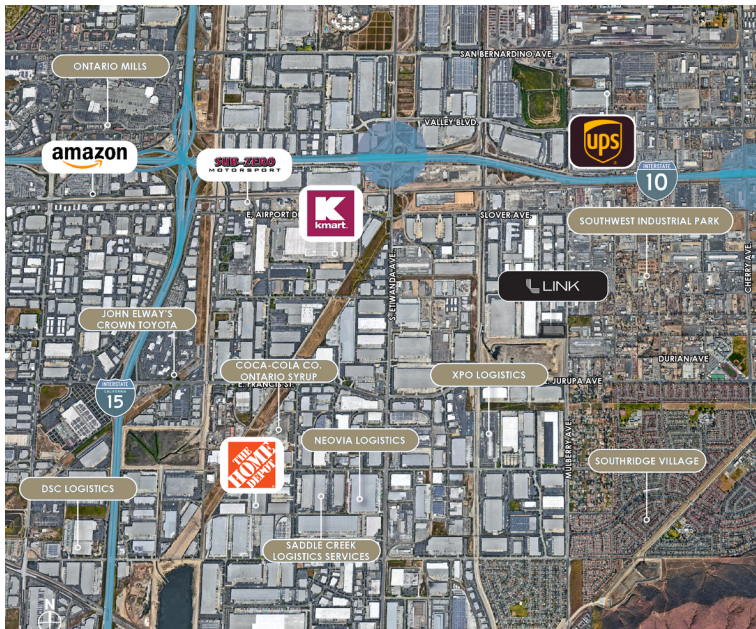
±66,104 SF



LEASED BY







## NOW LEASING – SPACE CENTER FONTANA

Building Size ±66,104 SF  
(Expandable to 143,186 SF)

Acres ±6.95 Acres of Land

Office ±2,679 SF

Dock & Drive-Ins 11 Dock High Doors (9'x11')  
3 Pit Levelers and 8 EOD's  
1 Ground Level Door (12'x14')

Sprinklers Upgraded Sprinkler Density to 80 GPM/2000 Can Accomodate up to 26' High Storage of Group "A" Cartoned, Unexpanded/Expanded Plastics

Power 400 Amps 277/480 V3 Phase (Confirm)

Clear Height 26'

Car Parking ±81

Truck Yard Depth 135'-140' Secured Truck Court

±66,106 SF (expandable to ±143,186 SF) in a modern industrial facility with dock-high loading, secured truck court, and upgraded fire protection. Prime Inland Empire location with direct freeway access and proximity to Ontario Airport and major ports.

FOR LEASE

±66,104 SF



Central Inland Empire Location: Quick access to I-10, I-15, I-60, and I-210 for efficient regional distribution.

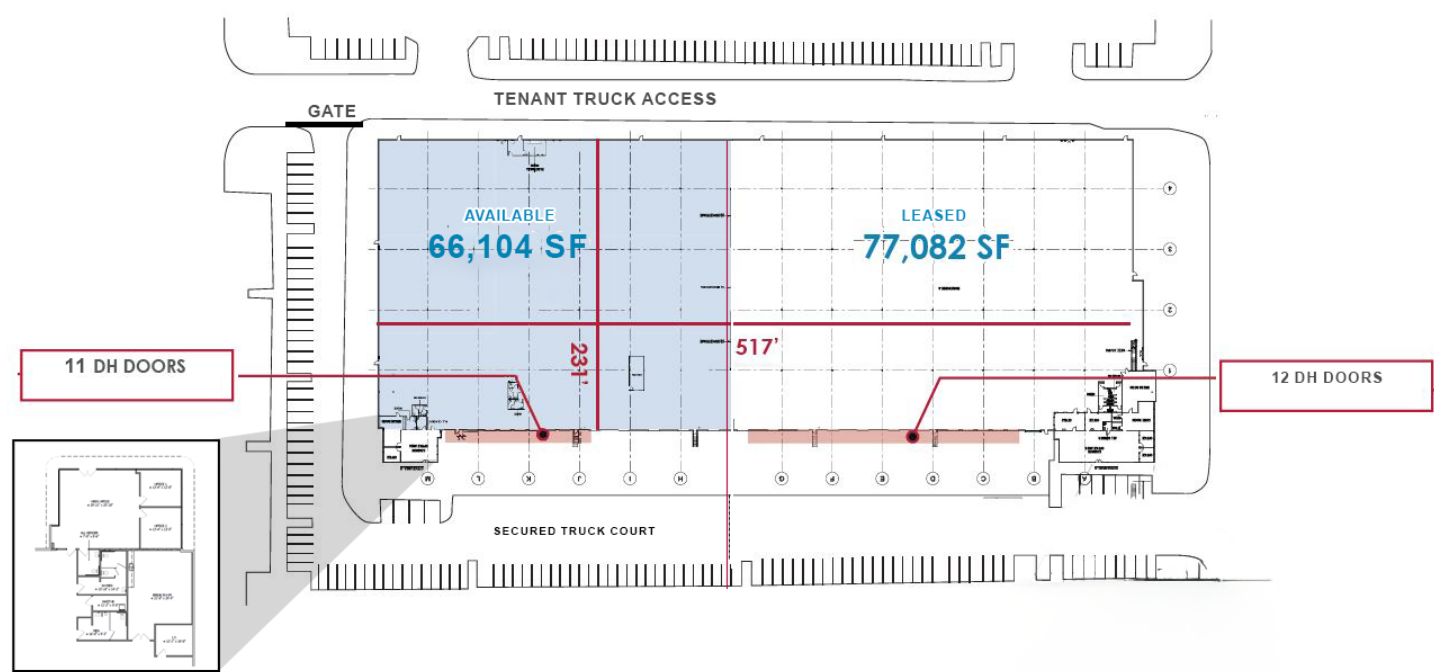


Logistics-Friendly: Just 5 miles from Ontario Airport and under 70 miles to major ports in Long Beach and Los Angeles.

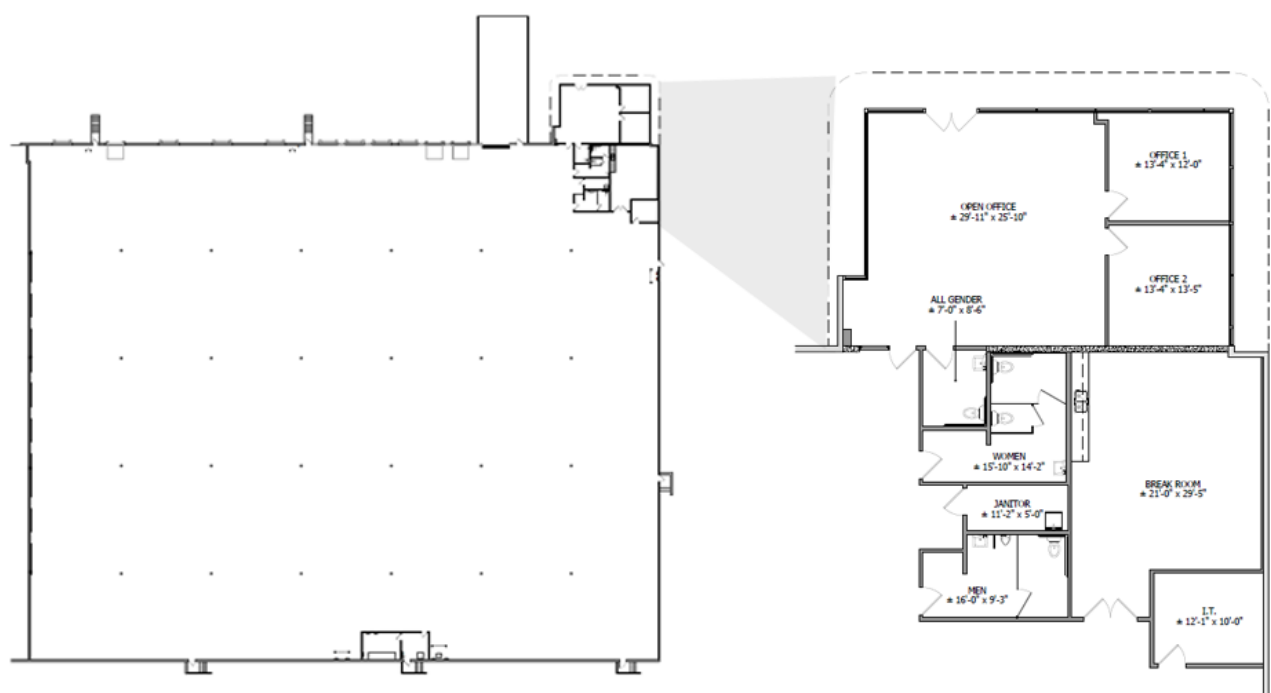


Established Industrial Hub: Located in Fontana's Southwest Industrial Park, surrounded by major corporate neighbors like Amazon, UPS, and Coca-Cola.

Site Plan  
Expandable to ±143,186 SF



WAREHOUSE + OFFICE LAYOUT



# CONTACT INFORMATION

11070 Mulberry Avenue  
Fontana, CA 92337

**Gus Andros, SIOR**

gandros@daumcommercial.com  
909.912.0003

CA Lic. 01010235

**Juan Covarrubias**

jcovarrubias@daumcommercial.com  
909.652.9055

CA Lic. 01945028

**Rick John, SIOR**

rj@daumcommercial.com  
909.912.0001

CA Lic. 99999999

This document is for informational purposes only and does not constitute an offer or acceptance of a lease. Any lease agreement must be in writing and signed by the landlord. No representations or warranties are made except as expressly stated in a signed lease. Information is provided "as is" and may be subject to errors or change without notice.



LEASED BY

