

# City Place

## CREATIVE SPACE OPPORTUNITY IN THE HEART OF CITY PLACE

1700 City Plaza Drive  
Spring, TX 77389



Everything needed for a convenient and productive work life is steps away.

## Availability

City Place 1 is a five-story, 149,500-square-foot office.

Suite R190  
6,608 RSF



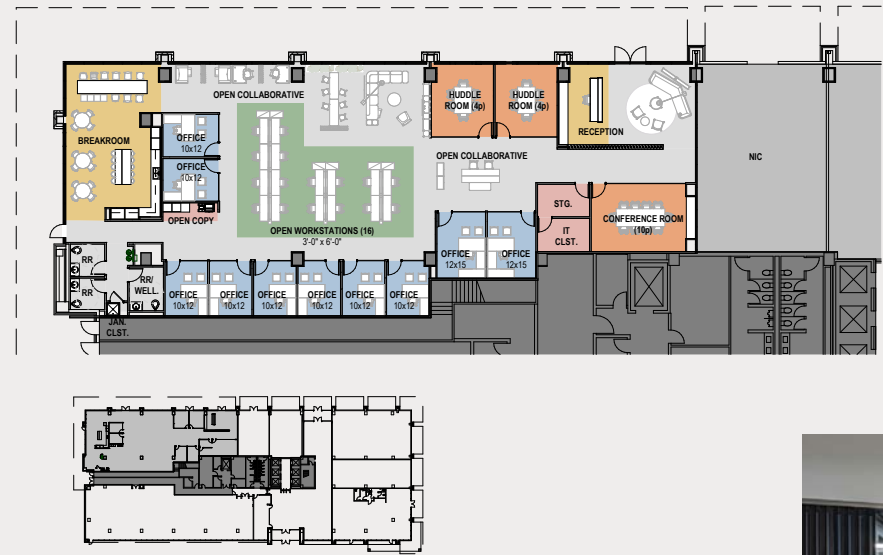
KEY PLAN

PROGRAMMING	Total
Private offices	
10x12	2
12x15	6
Total	8
Workstations (3x5)	50
Conference	
Large	1
Huddle	1
4,978 Sf/ 150	34 Occupants
1,225 Sf/ 15 Net	82 Occupants
Total	113 Occupants

# Availability

City Place 2 is a 10-story, 303,000-square-foot office.

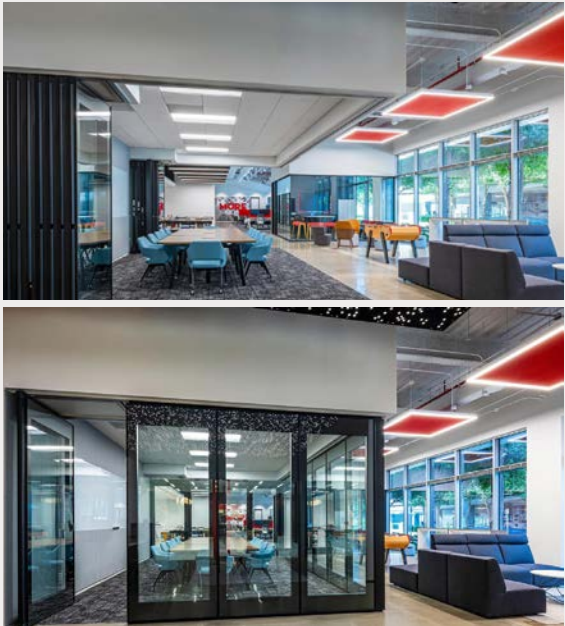
**Suite 100**  
**7,687 RSF**



PROGRAMMING	Total
Private offices	
10x12	8
12x15	2
<b>Total</b>	<b>10</b>
Workstations (3x6)	16
Conference	
Large	1
Huddle	2

7,346 Sf/ 150	49 Occupants
800 Sf/ 15 Net	54 Occupants
<b>Total</b>	<b>103 Occupants</b>

City Place 1 and 2 offer unparalleled access via three major thoroughfares, I-45, the Grand Parkway, and the Hardy Toll Road, that provides immediate connectivity to Greater Houston. On the ground floor is a selection of dining options, shops, and business-oriented retail including Common Bond, Island Grill, Bread Zeppelin, Focus Optical, and more.



PatrinelyGroup

CDCHOUSTONINC

Broker Contacts

**Chrissy Wilson**

+1 713 888 4062

chrissy.wilson@jll.com

**Matt Pruitt**

+1 713 888 4089

matt.pruitt@jll.com