

# FOR LEASE



## Property Highlights:

- 3,125 RSF to 4,897 RSF First Floor corner suite
- Atrium lobby exposure with break room and open area
- Class A atrium office building in Bel Aire Office Park
- Free covered and surface parking at 5/1000 rsf ratio
- Easy access to the I-270/Manchester Road interchange
- Banks, restaurants, service stations, movie theatre, shopping, West County Mall, Des Peres Lodge and Missouri Athletic Club within one-mile radius
- On-site day porter/maintenance
- Professionally managed by Johnson Group, Inc.

**FOR LEASE:  
\$23.75 prsf,  
full service**

## **1716 Hidden Creek Court Suite 180 Town & Country, MO 63131**

For more information, contact  
(314) 862-3000

Daniel J. Johnson (ext. 2)  
danj@j-group.com

or

Sheldon Johnson, SIOR (ext. 6)  
shell@j-group.com

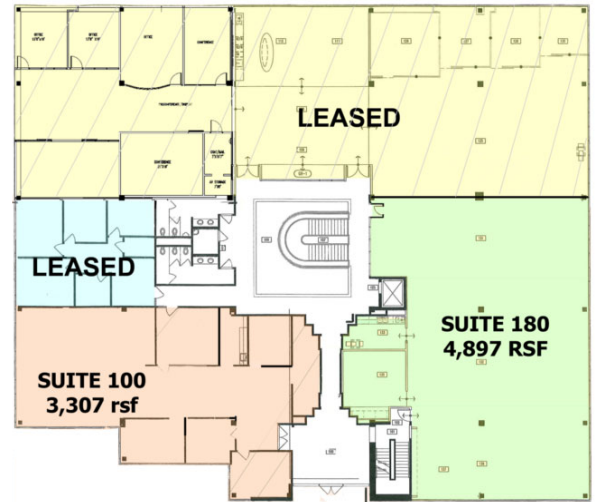
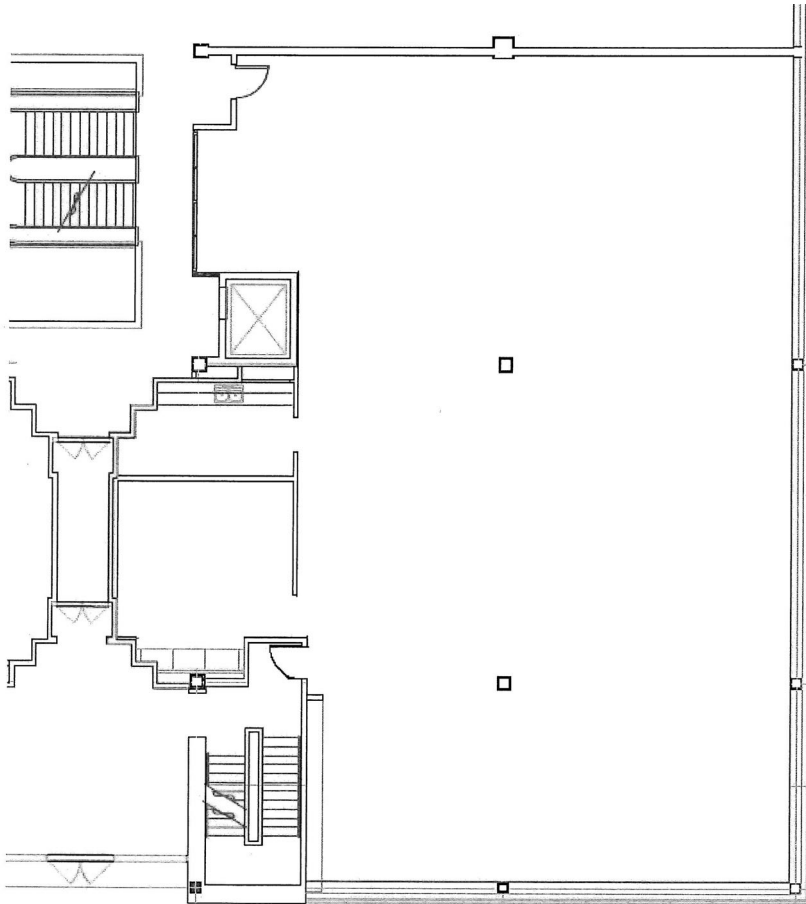
# Johnson Group

1714 Deer Tracks Trail, Suite 100  
St. Louis, Missouri 63131  
(314) 862-3000/fax (314) 862-1307  
www.j-group.com

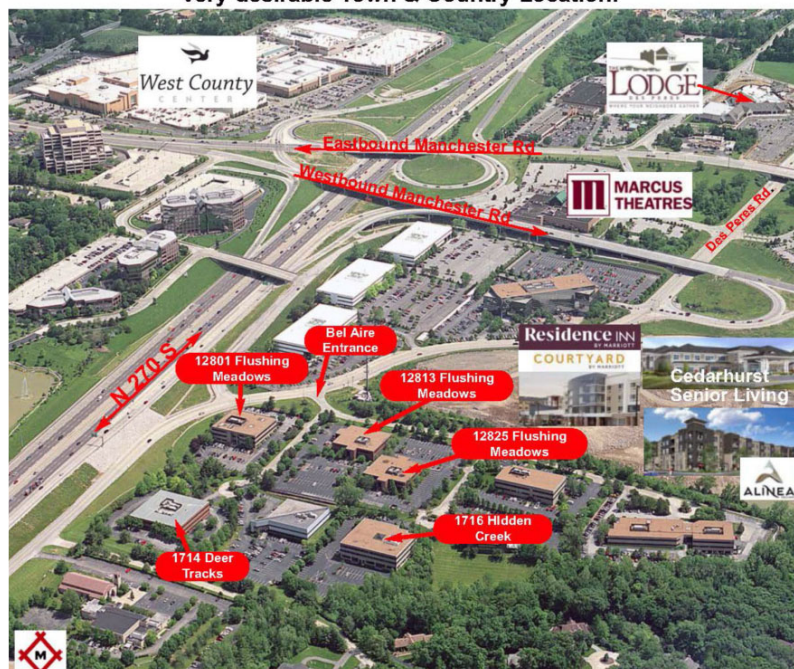


Information contained herein has been obtained from the owner of the property or from other sources deemed reliable; however, Broker does not guarantee the accuracy or completeness of this information. Broker cannot guarantee the suitability of these premises for the ultimate lessee's intended use or investment nor does Broker make any representation as to the environmental or other condition of the property and recommends that prospective lessee investigate fully. All properties are subject to prior sale, lease, change or withdrawal. Neither listing broker(s) nor Johnson Group shall be responsible for any typographical errors, misinformation, or misprints and shall be held totally harmless.

## 1716 Hidden Creek Court Suite 180 ±4,897 RSF Office



**Very desirable Town & Country Location!**



The above drawing is provided for marketing and conceptual use only and is not a scale or architectural drawing and may not be used for construction, zoning, measurement or architectural purposes and you may wish to seek competent professional services for appropriate documents.