

# **SIETE SQUARE II - Sublease Space**

**APPROXIMATELY 14,781 RSF DIVISIBLE TO 5,000 RSF**

**3707**



**3707 N. 7th Street, Suite 200; Phoenix, AZ 85012**

- 2ND FLOOR CORNER SUITE WITH EXCELLENT VIEWS
- MIXED CONFIGURATION OF OFFICES AND CUBICLE AREAS... FURNITURE AVAILABLE!!!!
- RARE OPPORTUNITY FOR UP TO 15K RSF IN MIDTOWN PHOENIX AREA!!!!
- Surface and covered parking available on site, 4 / 1,000 WITH 20 COVERED, RESERVED AVAILABLE!!



For Additional Information, contact:

Francis J. Marotta

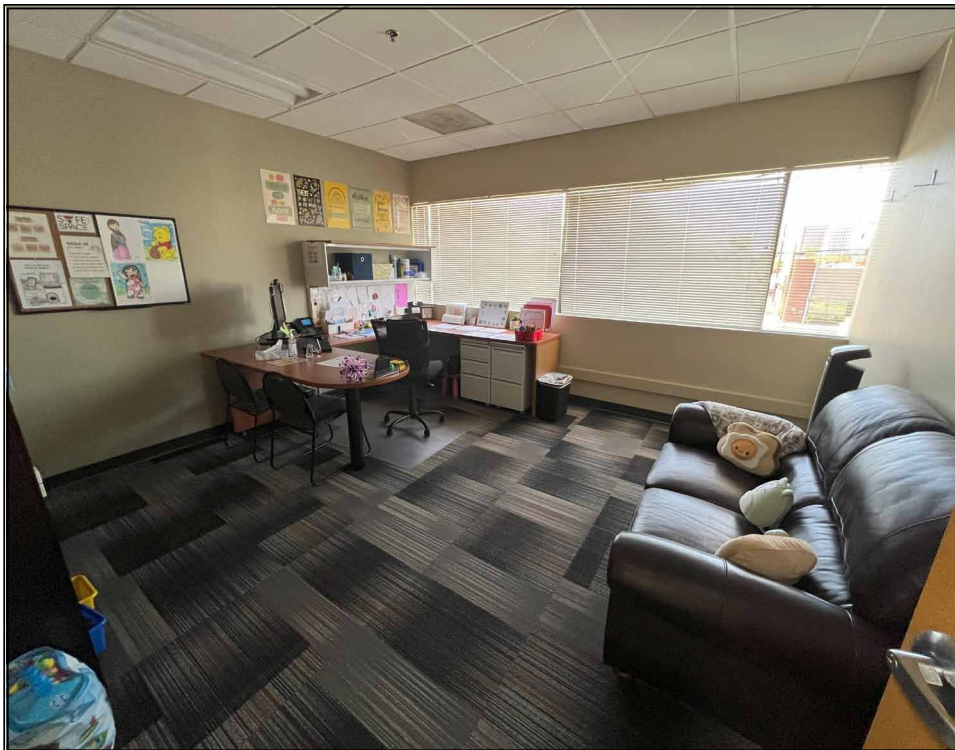
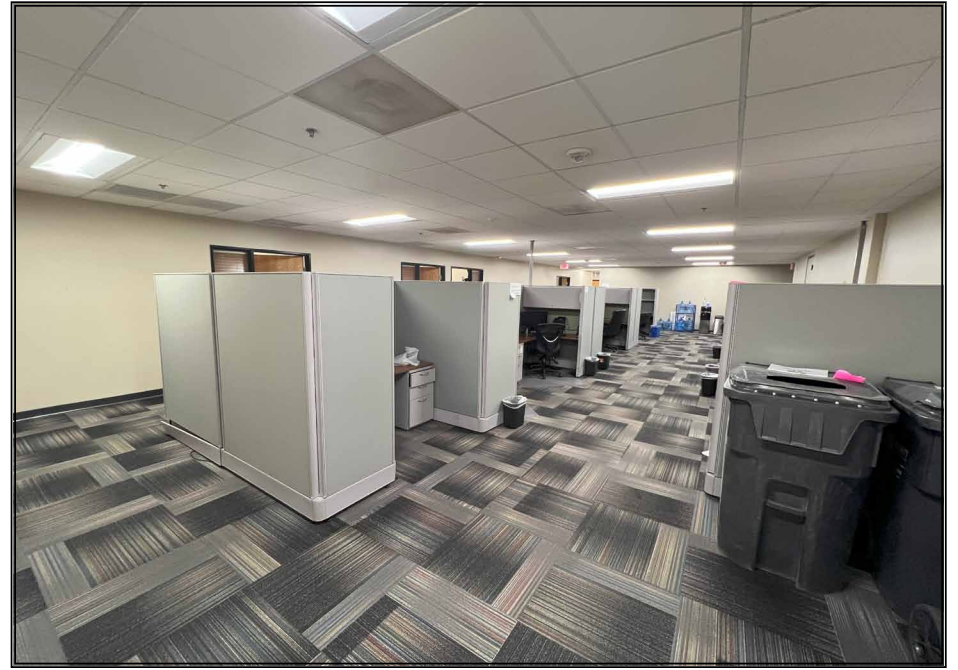
**MarCor Commercial Real Estate Services**

9383 E. Bahia Drive, Ste. 150; Scottsdale, AZ 85260

Email: [fmarotta@marcorcre.com](mailto:fmarotta@marcorcre.com)

**(480)607-9997**





THE INFORMATION ABOVE WAS FURNISHED BY THE OWNER OR OBTAINED FROM SOURCES DEEMED TO BE RELIABLE. HOWEVER NO WARRANTIES OR REPRESENTATIONS, EITHER EXPRESSED OR IMPLIED IS MADE AS TO THE ACCURACY THEREOF AND SAME IS SUBMITTED SUBJECT TO ERRORS, OMISSIONS, CHANGE OF RENTAL OR OTHER CONDITIONS, PRIOR SALE, LEASE OR FINANCING OR WITHDRAWAL WITHOUT NOTICE. NO LIABILITY OF ANY KIND SHALL BE IMPOSED ON THE BROKER HEREIN.



5353 NORTH 16TH STREET  
SUITE 105  
PHOENIX, AZ 85016  
602.241.3220