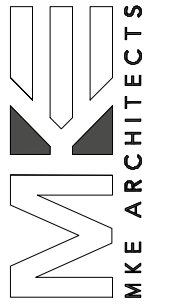


FLOOR PLAN

3/16"=1'-0" ①



Office Information
 Main Office: 225.412.0048
 Fax: 225.412.0049
 MKE Architects.com
 5800 Airline Hwy,
 Suite 217
 Baton Rouge, LA 70816
 Contact: Kirk Edwards, FA

Consultants Information
 Civil:
 Fox-Hesbi Engineering, LLC
 9100 Bluebonnet Center Blvd.,
 Suite 301
 Baton Rouge, LA 70809
 (225) 933-6505
 Contact: Scott Heil, PE

Mechanical and Electrical:
 GSE, INC.
 1816 Pass Road
 Gulfport, MS 39501
 (228) 864-5050
 Contact: Justin Theodaux, PE

Structural:
 Forte and Tablaca
 5107 Interline Avenue
 Baton Rouge, LA 70809
 (225) 927-9321
 Contact: Jason Fenno, PE

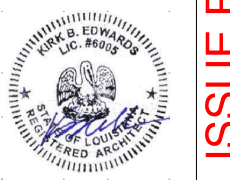
Project Title:
**ST. FRANCIS
 URGENT CARE**

Project Location:
 ROWLAND ROAD
 SWARTZ, LA 71203

Sheet Revisions:

No.	Date	Description
1	8/4/2022	OWNER REVISIONS

Sheet Name:
**DIMENSIONED
 FLOOR PLAN**



Project Number:
 21-24 A

Date:
 JUNE 1, 2022

Sheet Number:
 CONSTRUCTION DOCUMENTS

Sheet Name:
A2.01

2022.08.11_ISSUE FOR CONSTRUCTION