

PROPERTY FOR LEASE

Pointe Professional Centre

18285 Ten Mile Road Roseville, MI 48066

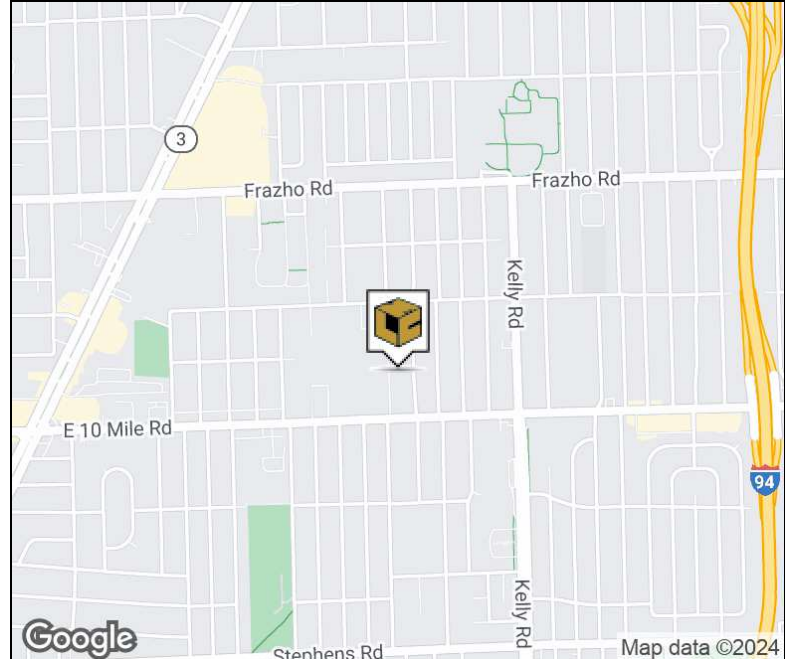


PROPERTY SUMMARY



Property Highlights

- Premier Eastside Six Building Professional Office Campus
- First Generation Medical Suite, 3,296 SF W/Multiple Exam Rooms
- Located Seconds from I-94/I-696
- Professional On-Site Management
- Many Common Area Upgrades were Completed Including Parking Lot, Enhanced Landscaping & Common Restroom Remodeling



FOR MORE INFORMATION:

Al Iafrate, SIOR
Senior Vice President
248.637.7791
aiafrate@LMCap.com



CONNECT WITH US

248.637.9700 | www.LMCap.com

Information contained herein was obtained from sources deemed to be reliable but is not guaranteed. Subjects to prior sales, changes of price or withdrawal.

PROPERTY FOR LEASE

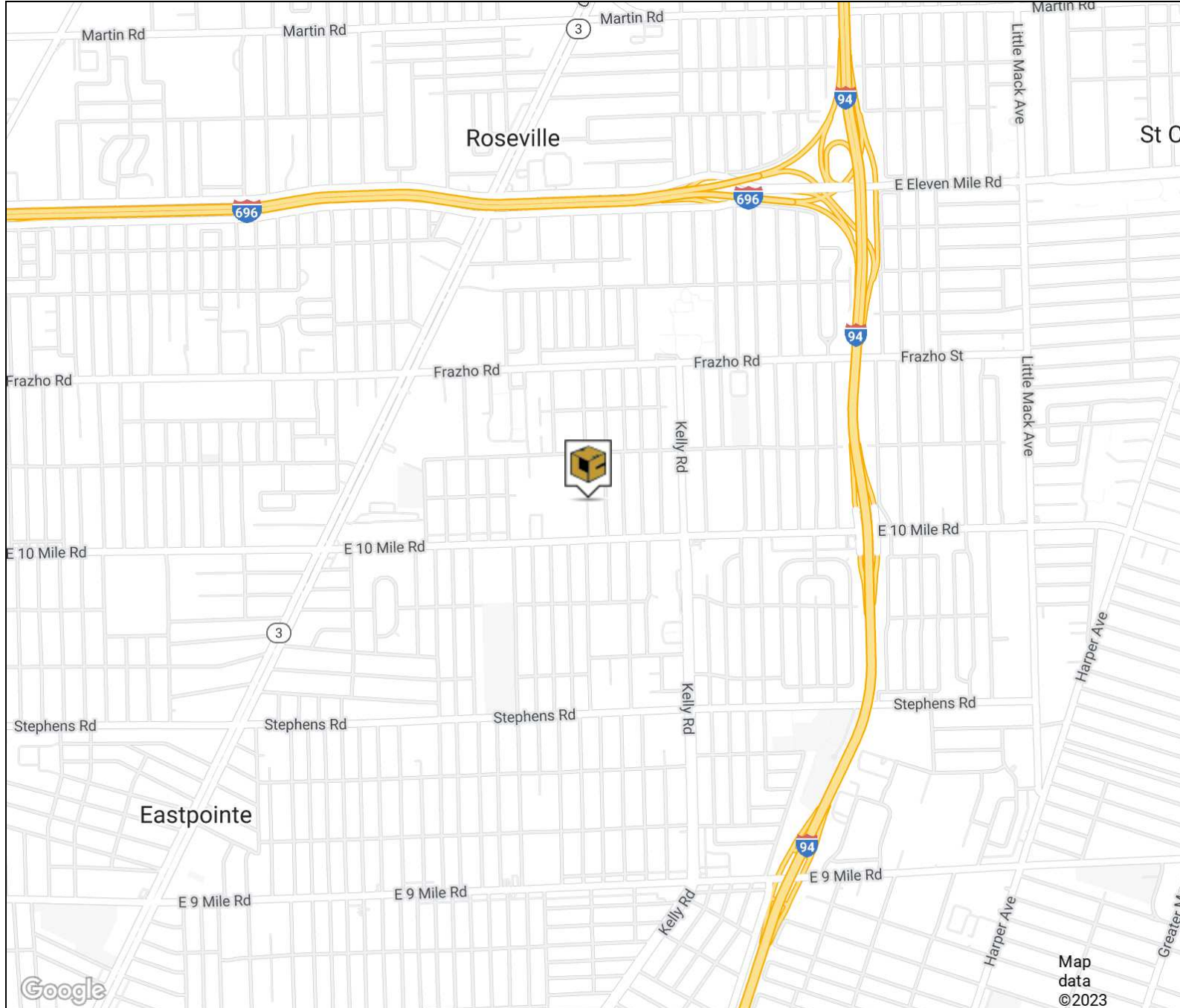
Pointe Professional Centre

18285 Ten Mile Road Roseville, MI 48066



L. MASON CAPITANI
CORFAC INTERNATIONAL

RETAILER MAP



FOR MORE INFORMATION:

Al Iafrate, SIOR

Senior Vice President
248.637.7791
aiafrate@LMCap.com



CONNECT WITH US

248.637.9700 | www.LMCap.com

Information contained herein was obtained from sources deemed to be reliable but is not guaranteed. Subjects to prior sales, changes of price or withdrawal.

PROPERTY FOR LEASE

Pointe Professional Centre

18285 Ten Mile Road Roseville, MI 48066



L. MASON CAPITANI
CORFAC INTERNATIONAL

OFFICE PROPERTY DETAILS

Location Information

Street Address	18285 Ten Mile Road
City, State, Zip	Roseville, MI 48066
County	Macomb
Cross-Streets	10 Mile Rd & Kelly Rd
Nearest Highway	I-94 & I-696

Building Information

Building Size	99,890 SF
Building Class	B
Tenancy	Multiple
Number of Floors	1
Year Built	1989
Gross Leasable Area	99,890 SF
Load Factor	12.0%
Annual Escalations	\$0.50/SF
Partition Allowance	Negotiable

Lease Rate:	\$23.75 SF/yr
Annual Escalations:	+Utilities
Load Factor:	\$0.50
	12.0%

Property Information

Property Type	Office
Property Subtype	Office Building
Zoning	O-1
Lot Size	99,890 SF
Amenities	Common area upgrades. On-site management. Close to area highways.

Parking & Transportation

Parking Type	Surface
--------------	---------

Available Suites

Suite 100 - 3,296 RSF	\$23.75 +Utilities
-----------------------	--------------------

FOR MORE INFORMATION:

Al Iafrate, SIOR
Senior Vice President
248.637.7791
aiafrate@LMCap.com



CONNECT WITH US

248.637.9700 | www.LMCap.com

Information contained herein was obtained from sources deemed to be reliable but is not guaranteed. Subjects to prior sales, changes of price or withdrawal.

PROPERTY FOR LEASE

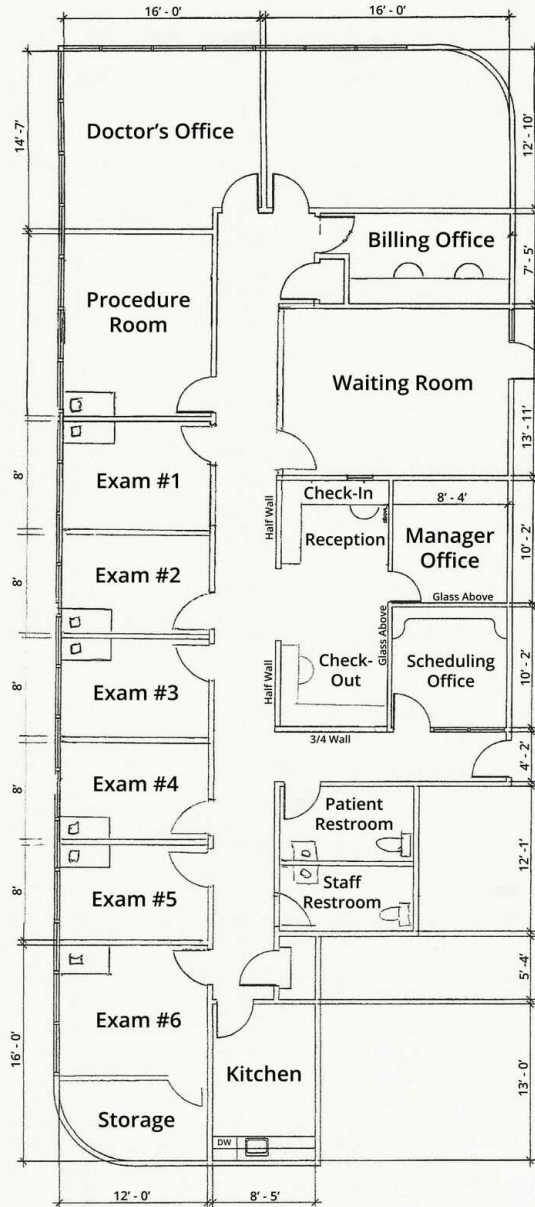
Pointe Professional Centre

18285 Ten Mile Road Roseville, MI 48066



L. MASON CAPITANI
CORFAC INTERNATIONAL

SUITE 100



18285 E. 10 Mile Road, Roseville, MI
SUITE 100 - 3,296 RSF

FOR MORE INFORMATION:

Al Iafrate, SIOR
Senior Vice President
248.637.7791
aiafrate@LMCap.com



CONNECT WITH US

248.637.9700 | www.LMCap.com

Information contained herein was obtained from sources deemed to be reliable but is not guaranteed. Subjects to prior sales, changes of price or withdrawal.

PROPERTY FOR LEASE

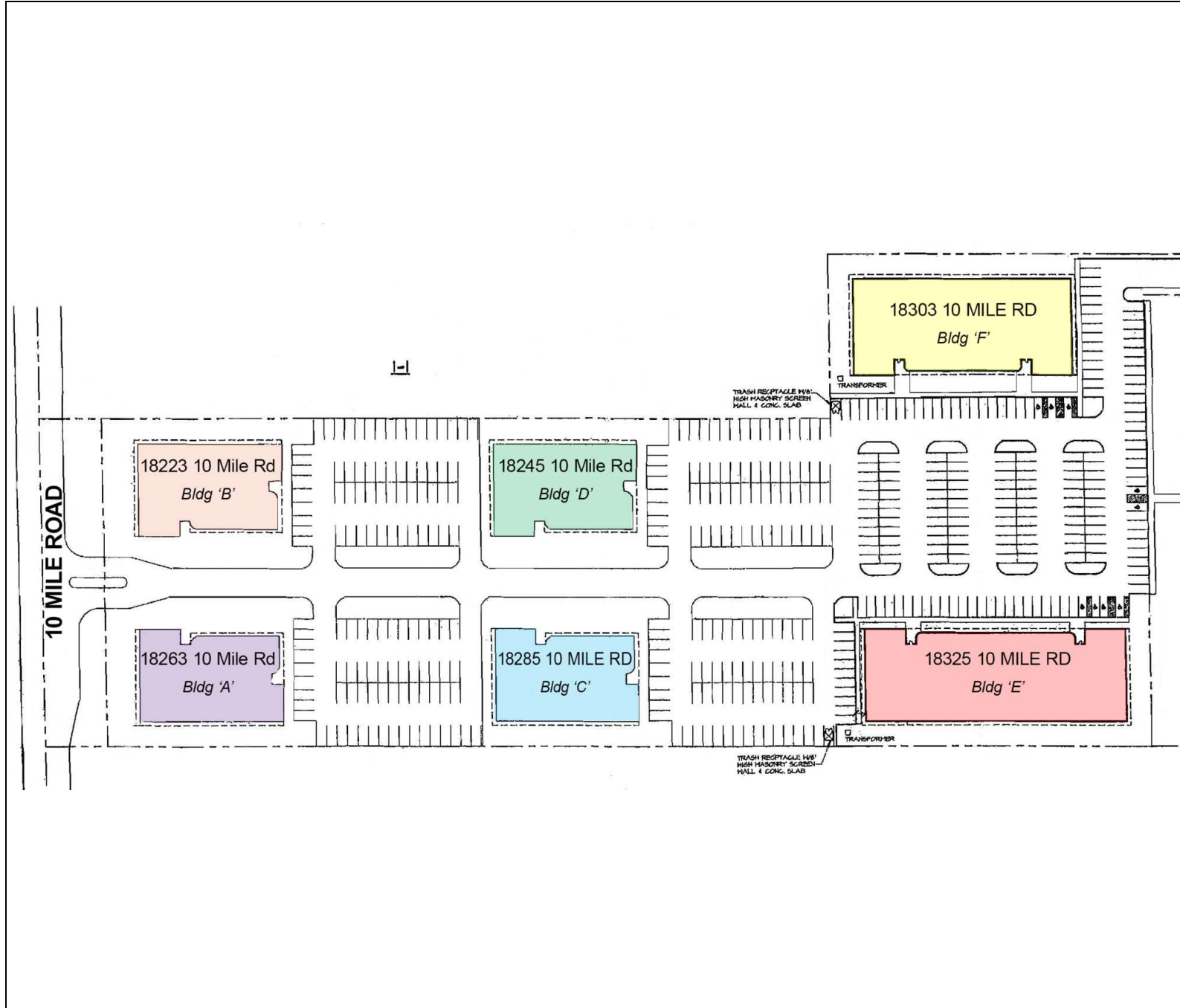
Pointe Professional Centre

18285 Ten Mile Road Roseville, MI 48066



L. MASON CAPITANI
CORFAC INTERNATIONAL

SITE PLANS



FOR MORE INFORMATION:

Al Iafrate, SIOR
Senior Vice President
248.637.7791
aiafrate@LMCap.com



CONNECT WITH US

248.637.9700 | www.LMCap.com

Information contained herein was obtained from sources deemed to be reliable but is not guaranteed. Subjects to prior sales, changes of price or withdrawal.

POINTE EAST OFFICE CENTER

PROPERTY MANAGEMENT
 EASTPOINT MANAGEMENT COMPANY
 18285 TEN MILE ROAD SUITE 110
 586-775-7774 (OFFICE) 586-899-9416 (CELL)

18263 TEN MILE ROAD, ROSEVILLE		
ST. JOHN HOSPITAL MAJEED PADUVANA MD FACP WAHED ISHAQSEI MD	SUITE C	586-552-8696
ROSEVILLE PULMONARY & SLEEP CLINIC EMAD ALATASSI MD FADI-JEAN SAAD MD	SUITE D	586-238-2060
PRIMARY CARE ASSOCIATES PC GREGORY G MONTPETIT MD	SUITE B	586-445-2330
LAW OFFICE OF ANDREA FERRARA	SUITE A	586-773-7767
ROSEVILLE PULMONARY & SLEEP CLINIC	SUITE E	586-238-2060

18223 TEN MILE ROAD, ROSEVILLE		
MICHIGAN CANCER SPECIALIST PLC EUGENE J AGNONE MD ADLI YAKAN MD VERA MARANCI MD JEANINE LUCA PA-C LOKESH NAGORI MD	SUITE 100	586-778-5880
DR MARCUZ DDS	SUITE 120	586-775-0520
SLEEP CARDIA	SUITE 140	

18285 TEN MILE ROAD, ROSEVILLE		
IN HOME REHAB	SUITE 100	586-774-5774
EASTPOINT MANAGEMENT CO CHRIS SCOTT/SHANNON MOMOT	SUITE 110	586-775-7774
MEADOWBROOK CONSTRUCTION CO CMC INVESTMENT LLC THOMAS E MILLER SHARI NOWICKI	SUITE 110	586-775-7774
SUDHA NANNAPANINI MD	SUITE 120	586-771-4830
A COMPREHENSIVE DERMATOLOGY CTR DR ALI MOIIN DR PETER JAJOU DR MOHAMMAD ZARKA	SUITE 130	586-776-7546
MAROSA SCHOOL OF PHLEBOTOMY	SUITE 140	586-359-6087
METRO INFUSION CENTER	SUITE 150	586-335-6842

18245 TEN MILE ROAD, ROSEVILLE		
JOCELYN ROBELLI, DDS	SUITE 110	586-585-1473
OFFICE OF INTERNAL MEDICINE ROBERT DUDLEY MD	SUITE 120	586-774-8710
MICHIGAN SURGERY SPECIALISTS DR JEFFERY HALL DR ARA BUSH DR JEREMY CIULLO	SUITE 130	586-774-4200
TERLUP & STERN	SUITE 140	
MICHIGAN SLEEP CENTER HARANATH POLICHERIA MD PC	SUITE 160	313-882-8600
MAP COMMUNICATIONS	SUITE 7A	

18325 TEN MILE ROAD, ROSEVILLE		
COMPREHENSIVE UROLOGY THOMAS J MERTZ MD TODD G CAMPBELL MD PHILIP SHALHOUB MD JEFFREY YEAMANS MD NORMA F LOWERY NP SUSAN GREINER PA-C	SUITE 120	586-773-6300
EASTLAKE PEDIATRICS VESNA L ROI MD JENNATA M FRANCIS MD	SUITE 100	586-776-1010
BEAUMONT HOSPITAL ST CLAIR INTERNISTS KUMADINE FONSEKA MD WAFAA HANNA MD DEEPALI JAIN MD DEMETRIOS MERMIGES MD SURAYYA SOARES MD JENNIFER WANG MD DONALD MOORE MD	SUITE 400	586-447-4000
HANGER CLINIC JEREMY MURRAY BRYAN SCULTHORPE LINDSAY REYNOLDS	Suite 6A	586-777-3753

18303 TEN MILE ROAD, ROSEVILLE		
CARDIOVASCULAR INSTITUTE OF MI PC M K AJJOUR MD BRIAN BARBARISH MD SUBHI SBAHI MD MAJID ALZAGOOM MD SARINE JOHN-ROSMAN MD ALI SHAKIR MD	SUITE 100	586-776-2768
ST JOHN HOSPITAL BLOOD DRAW	SUITE 150	586-498-5256
ST JOHN CENTER FOR WELLNESS EDWARD PAZUCHOWSKI MD MARY YENCHICK MD JAMES WHITMYER MD LYDIA RAYES DO	SUITE 500	586-498-5160
GREAT LAKES PSYCHOLOGY GROUP	SUITE 200	800-693-1916