

# FOR LEASE

**3,386 SF | \$1.20/SF/MO. NNN**

## Professionally Managed Office/Industrial Space

20332 Empire Ave., Suite F6/F7, Bend, OR 97701



### PROPERTY DETAILS

<b>Suite F6/F7:</b>	3,386 SF
<b>Lease Rate:</b>	\$1.20/SF/Mo. NNN
<b>NNNs:</b>	Est. at \$0.68/SF/Mo.
<b>Zoning:</b>	Mixed Employment (ME)
<b>Date Avail.:</b>	Now

### HIGHLIGHTS

- Suite F6/F7 is an office/industrial suite with a reception area, office, warehouse, and a fenced-off security storage yard
- Professionally managed
- Conveniently located off the Hwy 97 Empire exit on the north end of Bend

**Robert Raimondi, CCIM | Peter May, CCIM**  
**Emilio Tiscareno, Broker**

600 SW Columbia St., Ste. 6100 | Bend, OR 97702

**541.383.2444** | [www.CompassCommercial.com](http://www.CompassCommercial.com)

**COMPASS**  
COMMERCIAL

**REAL  
ESTATE  
SERVICES**



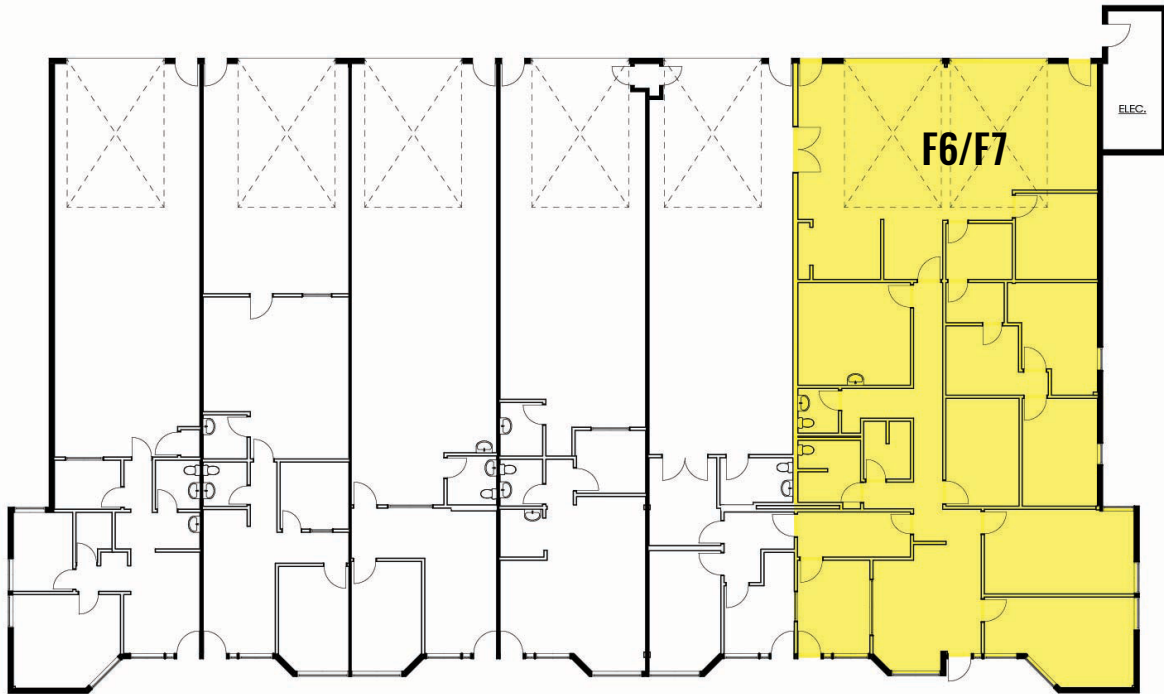
# FOR LEASE

3,386 SF | \$1.20/SF/MO. NNN

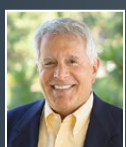
## Professionally Managed Office/Industrial Space

20332 Empire Ave., Suite F6/F7, Bend, OR 97701

### FLOOR PLAN



Brokers are licensed in the state of Oregon. This information has been furnished from sources we deem reliable, but for which we assume no liability. This is an exclusive listing. The information contained herein is given in confidence with the understanding that all negotiations pertaining to this property be handled through Compass Commercial Real Estate Services. All measurements are approximate.



**Robert Raimondi, CCIM**  
Broker  
Cell 541.771.2020  
rraimondi@compasscommercial.com



**Peter May, CCIM**  
Partner, Principal Broker  
Cell 541.408.3888  
pmay@compasscommercial.com



**Emilio Tiscareno**  
Broker  
Cell 541.213.9640  
etiscareno@compasscommercial.com

**COMPASS**  
COMMERCIAL  
**REAL ESTATE**  
SERVICES