

FOR SALE/LEASE • OFFICE SPACE

482 Payne Road • Scarborough, ME



ONLY ONE FLOOR REMAINING!



9,696± SF CLASS A OFFICE

- Join Granite Bay Medical on the corner of Payne Rd and Cummings Rd on the South Portland/ Scarborough line
- Just off I-295 and I-95 with easy access to the Portland International Jetport, Maine Mall and Downtown Portland
- Great signage options offer tenants excellent exposure
- Roof-mounted photovoltaic system with solar panels

SALE PRICE: \$7,950,000
LEASE RATE: \$15.00/SF NNN



Joe Malone, CCIM
O 207.773.2554
C 207.233.8000
Joe@malonecb.com



Jennifer Small, CCIM
O 207.772.6871
C 207.233.6872
Jennifer@malonecb.com

PROPERTY SUMMARY

482 Payne Road • Scarborough, ME



Site Info

OWNER:	Cowabunga LLC
MANAGEMENT:	East Brown Cow
DEED:	Book 23998, Page 216
ASSESSOR:	Map R037, Lot 041
LOT SIZE:	2.25± AC
SIGNAGE:	On building and street pylon
PARKING:	157± in common with two egress points on Payne and Cummings Rd
ZONING:	B-2 Regional Business
PROPERTY TAXES:	\$63,668 (2026)

Building Info

BUILDING SIZE:	38,784± SF
AVAILABLE SPACE:	4th Floor - 9,696± SF
YEAR BUILT:	1987
CONSTRUCTION:	Steel frame
ROOF:	Flat
SIDING:	Brick
FOUNDATION:	Slab
FLOORING:	Carpet/tile mix
LIGHTING:	Mix T-12 - T-5
ELECTRICITY:	3-phase, 200 amp
UTILITIES:	Municipal water/sewer
RESTROOM:	Separate men and women multi-stalls on each floor. Fourth floor has additional private bath with shower
SPRINKLER:	Wet system
ELEVATOR:	One (1)

Existing Lease

Existing lease with Granite Bay Medical. Financials and lease information available with signed confidentiality agreement.

Antennae Easement & Profit Share

Telecom Facilities Easement for a portion of the roof to Wireless Realty Advisors III, LLC (WRA) that will pay fifty-five (55%) of gross revenue attributable to any future antennae subtenants of WRA to the building owner.

HVAC Information

Gas/electric fired water source closed loop heat pump above ceiling and roof mounted photovoltaic system with electricity-generating solar panels.



PHOTOS

482 Payne Road • Scarborough, ME

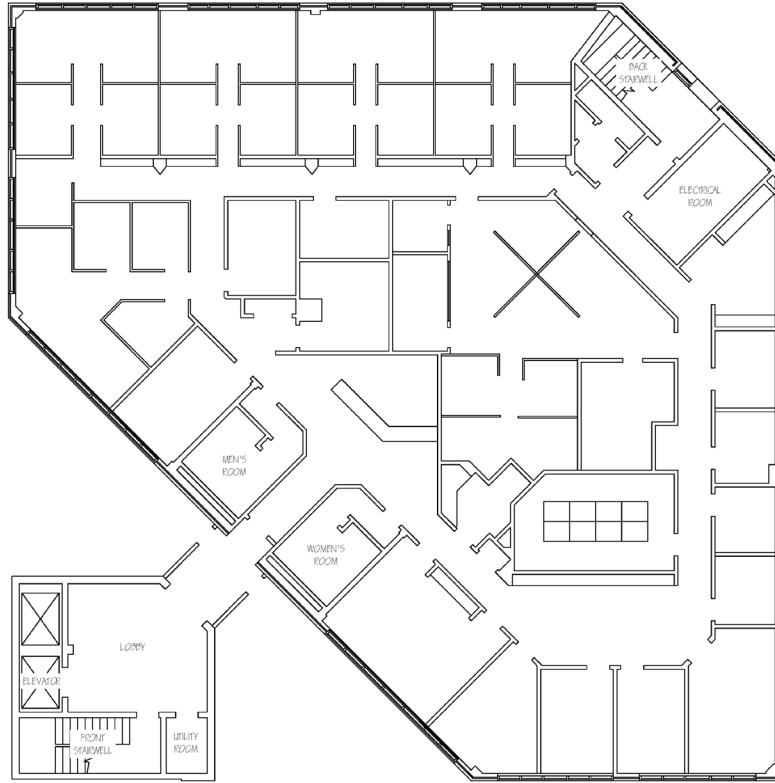


FLOOR PLAN

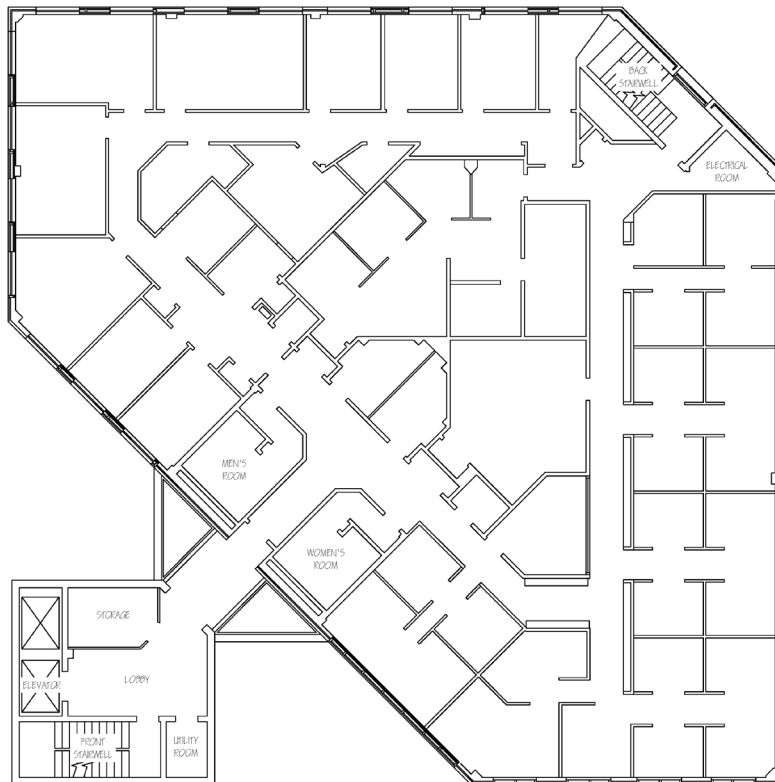
482 Payne Road • Scarborough, ME



1ST Floor - 9,107± SF
Leased to Granite Bay Medical



2ND Floor - 9,696± SF
Leased to Granite Bay Medical



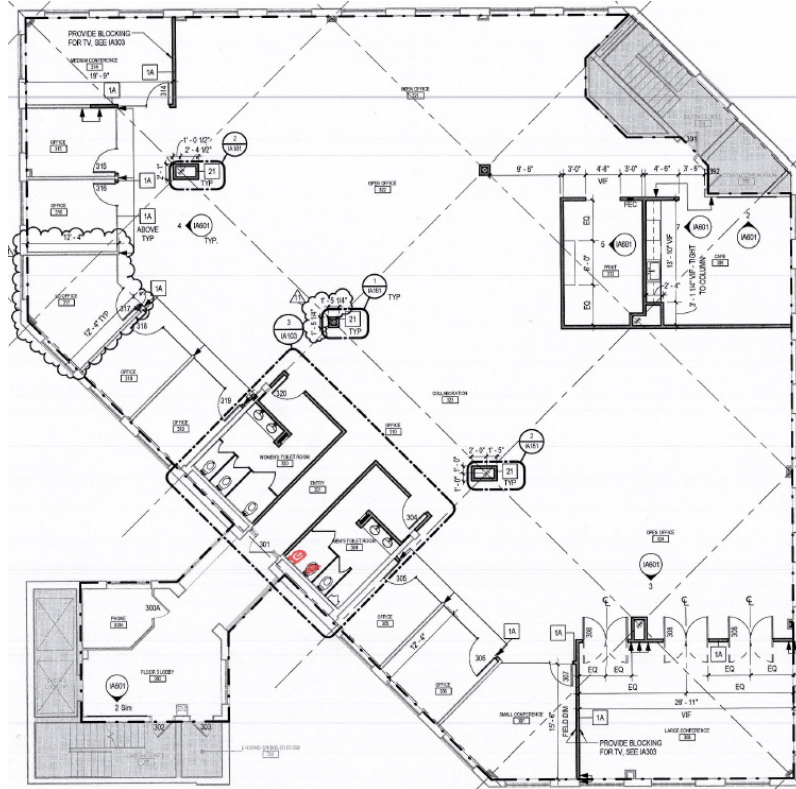
FLOOR PLAN

482 Payne Road • Scarborough, ME



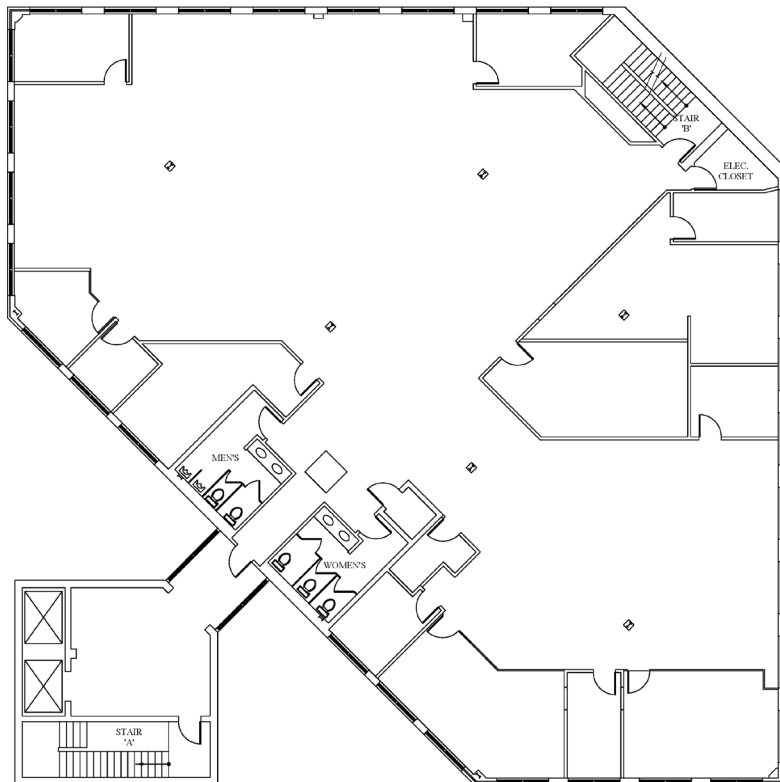
3RD Floor - 9,696± SF

Leased to Granite Bay Medical



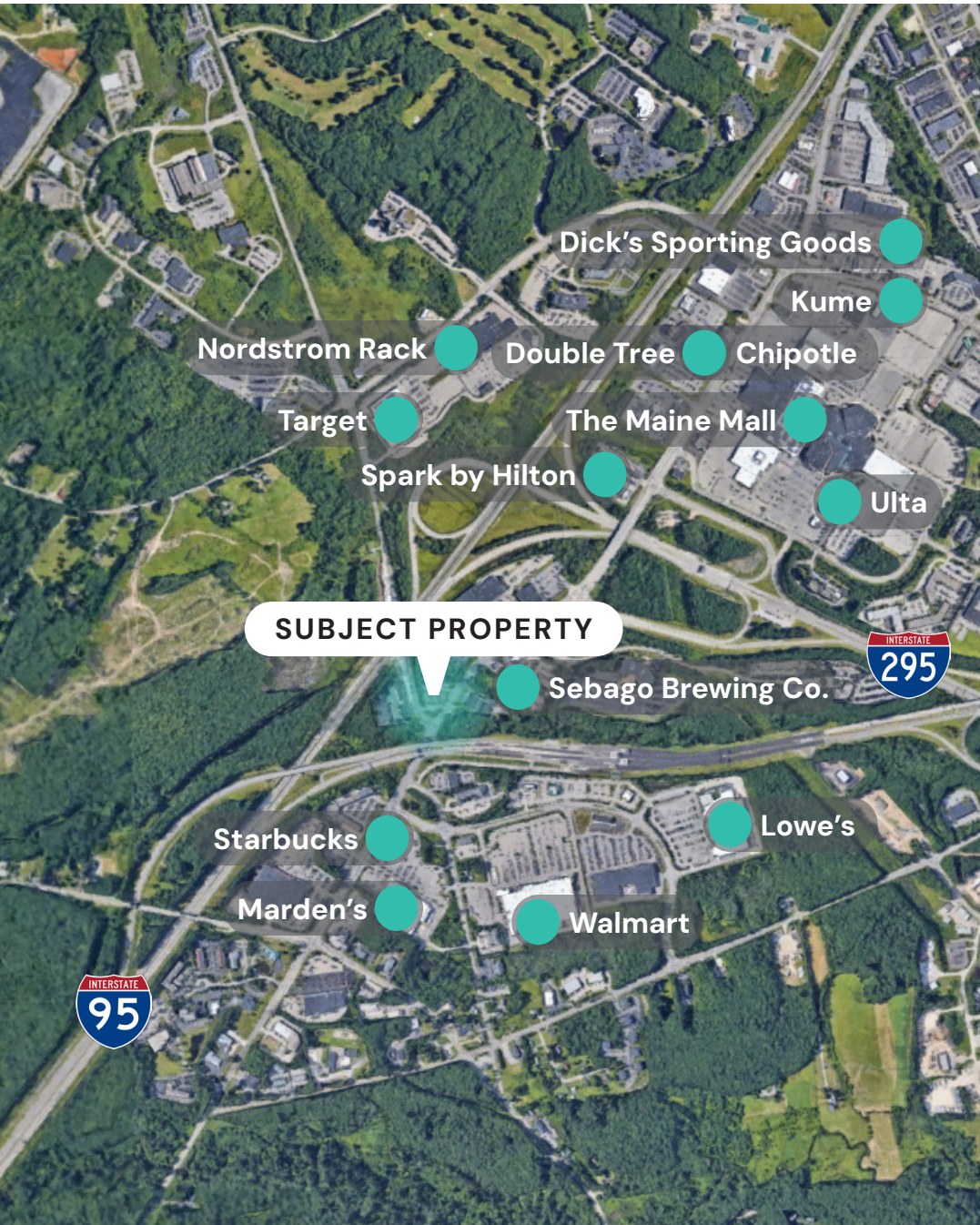
4TH Floor - 9,696± SF

Available



LOCATION MAP

482 Payne Road • Scarborough, ME



NEARBY

STAY



DINE



SHOP



This document has been prepared by Malone Commercial Brokers for advertising and general information only. Malone Commercial Brokers makes no guarantees, representations or warranties of any kind, expressed or implied, regarding, but not limited to, warranties of content, accuracy, and reliability. Any interested party should undertake their own inquiries as to the accuracy of the information. Malone Commercial Brokers excludes unequivocally all informed or implied terms, conditions and warranties arising out of this document and excludes all liability for loss and damages there from. All data is subject to change of price, error, omissions, other conditions or withdrawal without notice. Malone Commercial Brokers is acting as the Seller's/Lessor's agent in the marketing of this property.