

# 225 Greenfield Pkwy.

Liverpool, New York 13088



## Property Features

Class A office building with modern, upscale finishes. Suites feature ample natural light with plentiful large windows, interior glass walls for natural light, layouts with a mix of private offices, open space and conference rooms. One 1,850 RSF suite is available on the first floor and suites ranging in size between 1,490 and 3,393 RSF are available on the second floor. Excellent location with immediate access to I-81 & I-90/ NYS Thruway; minutes from downtown Syracuse and Syracuse Hancock International Airport.

## Property Highlights

- + Suites ranging in size from 1,490 to 3,393 RSF available
- + Common conference room that can accommodate 30 people
- + Modern upscale finishes; ample natural light
- + Ample free parking





## Property Overview

- + 1,850 RSF on the first floor
- + Suites ranging in size between 1,490 to 3,393 RSF on the second floor available for lease.
- + Common conference room (18'x29') that can accommodate 30 people
- + Modern upscale finishes; ample natural light
- + Ample free parking
- + Minutes from downtown Syracuse and Syracuse Hancock International Airport
- + Nearby amenities:
  - Dining
  - Lodging
  - Shopping (Destiny USA)

© 2025 CBRE Upstate NY, part of the CBRE Affiliate Network. All rights reserved. This information has been obtained from sources believed reliable, but has not been verified for accuracy or completeness. You should conduct a careful, independent investigation of the property and verify all information. Any reliance on this information is solely at your own risk. CBRE Upstate NY and the CBRE Upstate NY logo are service marks of CBRE Upstate NY. All other marks displayed on this document are the property of their respective owners, and the use of such logos does not imply any affiliation with or endorsement of CBRE Upstate NY. Photos herein are the property of their respective owners. Use of these images without the express written consent of the owner is prohibited.

### CBRE Upstate NY

500 Plum St., Suite 402

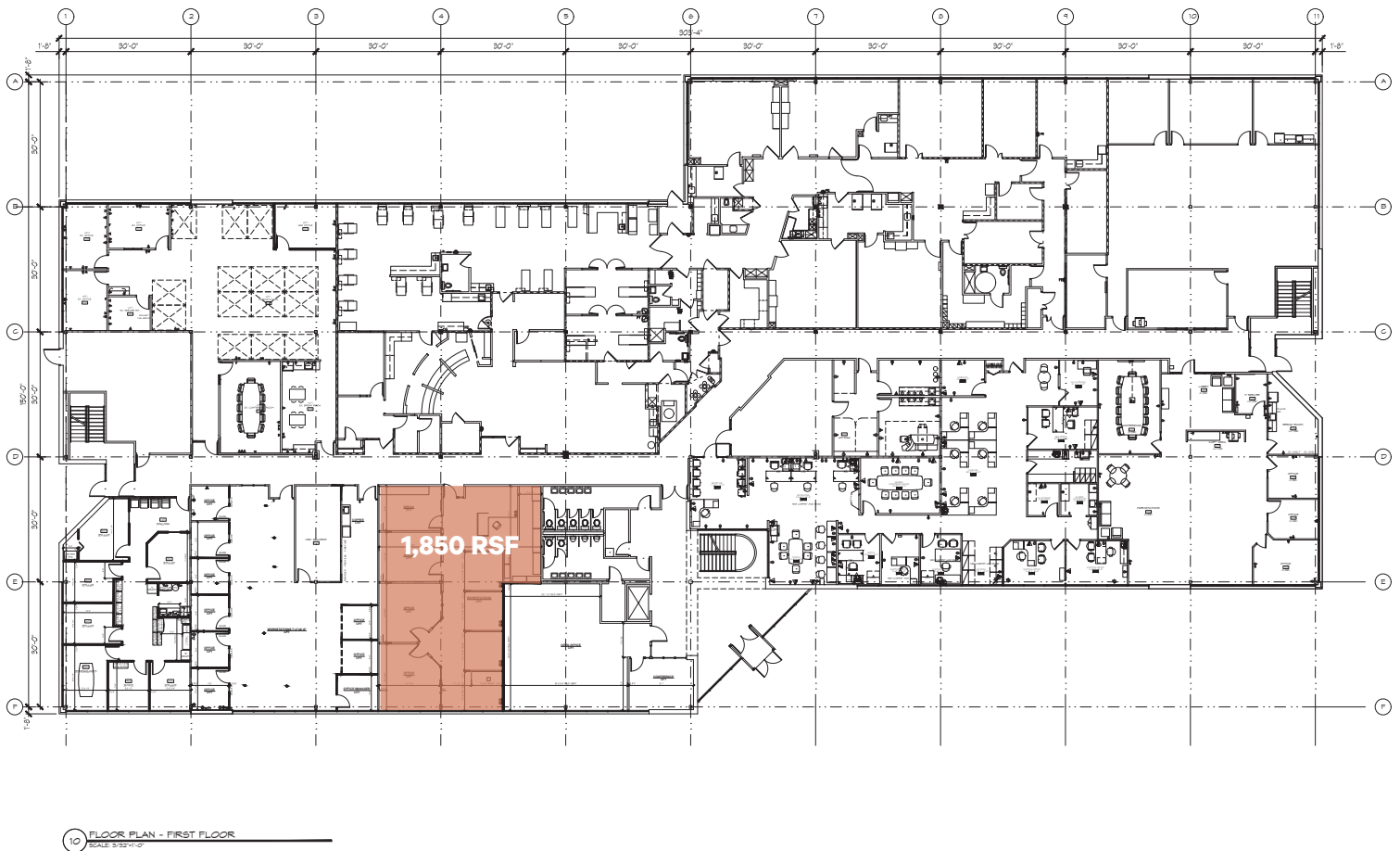
Syracuse, NY 13204

+1 315 422 4200

[www.cbre.com/syracuse](http://www.cbre.com/syracuse)

**CBRE Upstate NY**

PART OF THE AFFILIATE NETWORK



First Floor - 1,850 RSF Available

## Contact Us

### Bill Anninos

Lic. Associated Real Estates Broker  
+1 315 422 4200 x315  
bill.anninos@cbre-syr.com

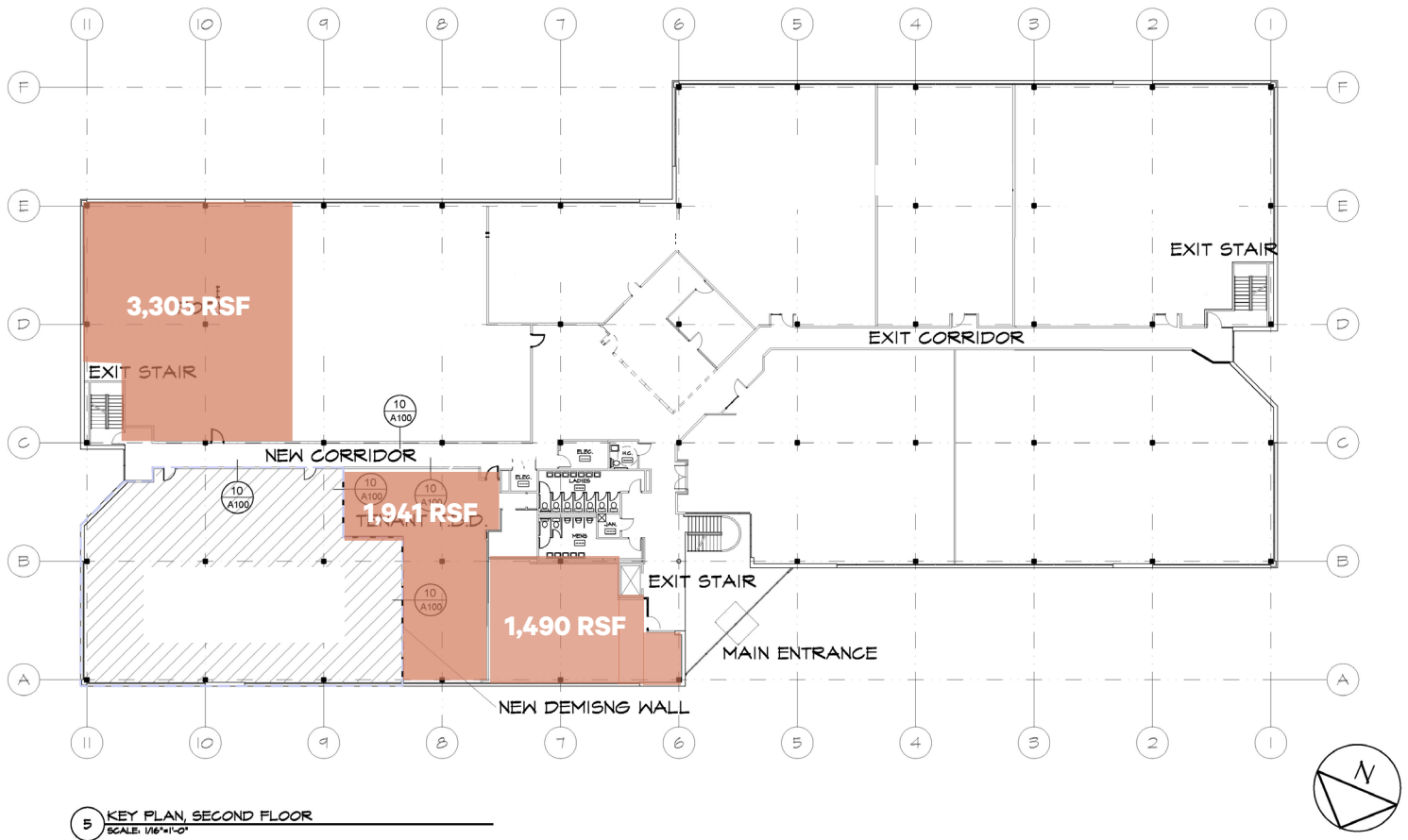
### Lawrence Papaleo

Lic. Associated Real Estate Broker  
+1 315 422 4200 x312  
lawrence.papaleo@cbre-syr.com

### CBRE Upstate NY

500 Plum St., Suite 402  
Syracuse, NY 13204  
+1 315 422 4200  
www.cbre.com/syracuse

**CBRE Upstate NY**  
PART OF THE AFFILIATE NETWORK



**Second Floor - 1,490 to 3,393 RSF Available**

## Contact Us

### Bill Anninos

Lic. Associated Real Estates Broker  
+1 315 422 4200 x315  
bill.anninos@cbre-syr.com

### Lawrence Papaleo

Lic. Associated Real Estate Broker  
+1 315 422 4200 x312  
lawrence.papaleo@cbre-syr.com

### CBRE Upstate NY

500 Plum St., Suite 402  
Syracuse, NY 13204  
+1 315 422 4200  
www.cbre.com/syracuse

**CBRE Upstate NY**  
PART OF THE AFFILIATE NETWORK



**225 Greenfield Parkway**  
Liverpool, NY 13088

**For Lease**



## Contact Us

### Bill Anninos

Lic. Associated Real Estates Broker  
+1 315 422 4200 x315  
bill.anninos@cbre-syr.com

### Lawrence Papaleo

Lic. Associated Real Estate Broker  
+1 315 422 4200 x312  
lawrence.papaleo@cbre-syr.com

### CBRE Upstate NY

500 Plum St., Suite 402  
Syracuse, NY 13204  
+1 315 422 4200  
www.cbre.com/syracuse

**CBRE Upstate NY**  
PART OF THE AFFILIATE NETWORK