

# 18-Unit Multifamily Investment

Fully Leased | Northside

EXCLUSIVE LISTING

# FOR SALE



20  08  
**ONE SOUTH**  
COMMERCIAL

## 3810 CHAMBERLAYNE AVE

RICHMOND, VA 23227

 **\$2,400,000**

### PROPERTY HIGHLIGHTS

- ✓ 18 2BD/1BA UNITS TOTAL
- ✓ SPACIOUS UNITS
- ✓ AMPLE PARKING
- ✓ ON-SITE LAUNDRY
- ✓ FULLY LEASED

ISAAC WEINTZ | 804.404.3161  
isaac.weintz@onesouthcommercial.com

TOM ROSMAN | 804.539.3017  
tom.rosman@onesouthcommercial.com



## One South Commercial is pleased to present the exclusive listing for 3810 Chamberlayne Avenue.

Fully leased, this brick building is a rare find on Chamberlayne Ave, featuring a total of 18 two bedroom/one bathroom apartments as well as ample parking and laundry onsite. These spacious units consist of upgraded finishes throughout. The strong historical occupancy proves that there is realistic opportunity for obtainable upside on the rents.

Located in Richmond’s growing Northside community, the Chamberlayne corridor has become a mainstay for workforce housing residents.

### QUICK FACTS

**ADDRESS** | 3810 Chamberlayne Ave,  
Richmond, VA 23227

**PID** | N000-1899-007

**ZONING** | R-48

**GLA** | 18,399 SF

**LOT SIZE** | .536 AC

**UNITS** | 18

**BUILT** | 1966

**PRICE** | \$2,400,000

### UPSIDE POTENTIAL

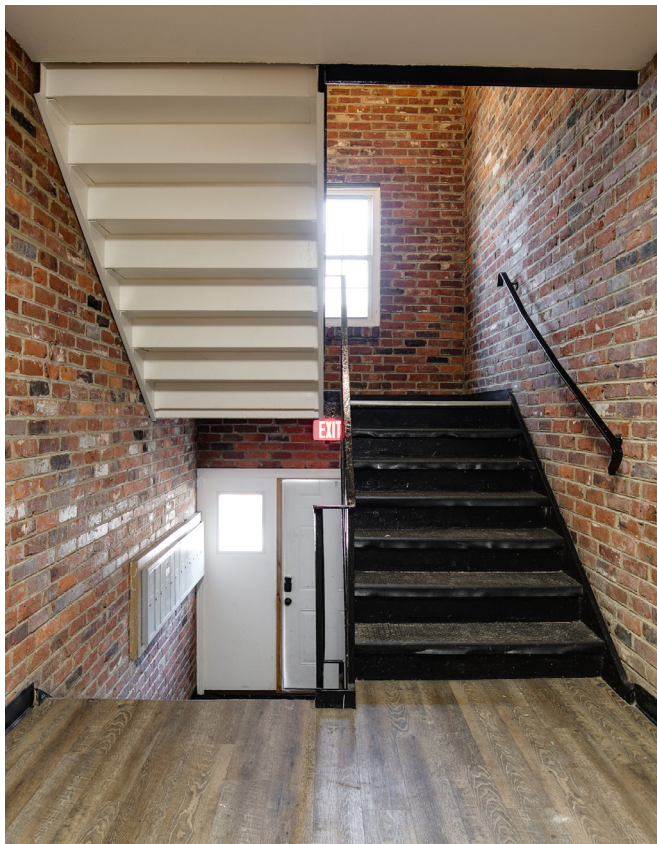
**Current Avg. Rent** | \$1,021/month

**Market Rent** | \$1,250/month





Fully Leased, this brick building is a rare find on Chamberlayne Ave, featuring a total of 18 2 BD/1 BA apartments as well as ample parking and laundry onsite.





## THE NORTHSIDE

Richmond's Northside is a vibrant collection of historic neighborhoods like Ginter Park, Bellevue, Barton Heights, and Highland Park, each offering a distinct character rooted in the city's late 19th- and early 20th-century growth. The area is celebrated for its well-preserved architecture, including Craftsman bungalows, Colonial Revivals, and stately early brick homes, alongside pockets of newer infill and renovated residences that blend modern comfort with historic charm.

Residents benefit from convenient access to shopping, dining, and entertainment along Chamberlayne Avenue, Brookland Park, and nearby retail hubs, while parks, trails, and community centers provide abundant recreational opportunities. Healthcare services are readily available, with major hospitals and specialty clinics a short drive away. Families enjoy a mix of well-regarded public schools and private educational options.



**ONE SOUTH COMMERCIAL** is a CoStar PowerBroker in the Richmond, VA investment sales market. Our reputation among those with local knowledge as the premier investment sales shop in the City of Richmond is built on a wide network of relationships with principals all over the world who trust us and our ability to effectively analyze the economics of any deal and represent them honestly.

## MEET YOUR AGENTS



**ISAAC WEINTZ | 804.404.3161**  
isaac.weintz@onesouthcommercial.com



**TOM ROSMAN | 804.539.3017**  
tom.rosman@onesouthcommercial.com

