



For Lease

# 51 Avenue Buildings

9403/43 51 Avenue | Edmonton, AB

Grade loading bays with yard available

- Up to ±5,527 SF grade loading office/warehouse bays with fenced yard
- Two access points into large marshalling area
- Multiple bus routes along 51 Avenue making this location transit friendly

For more information contact:

**Kent Simpson**

Vice President

780 203 0425

[Kent.Simpson@jll.com](mailto:Kent.Simpson@jll.com)

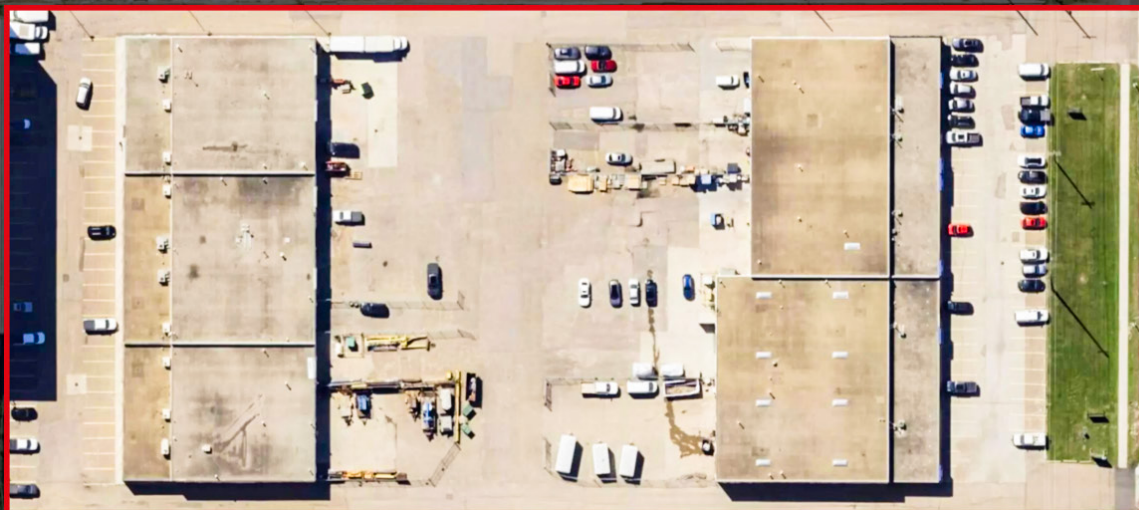
**Bronwyn Scrivens**

Vice President, SIOR

780 807 4564

[Bronwyn.Scrivens@jll.com](mailto:Bronwyn.Scrivens@jll.com)



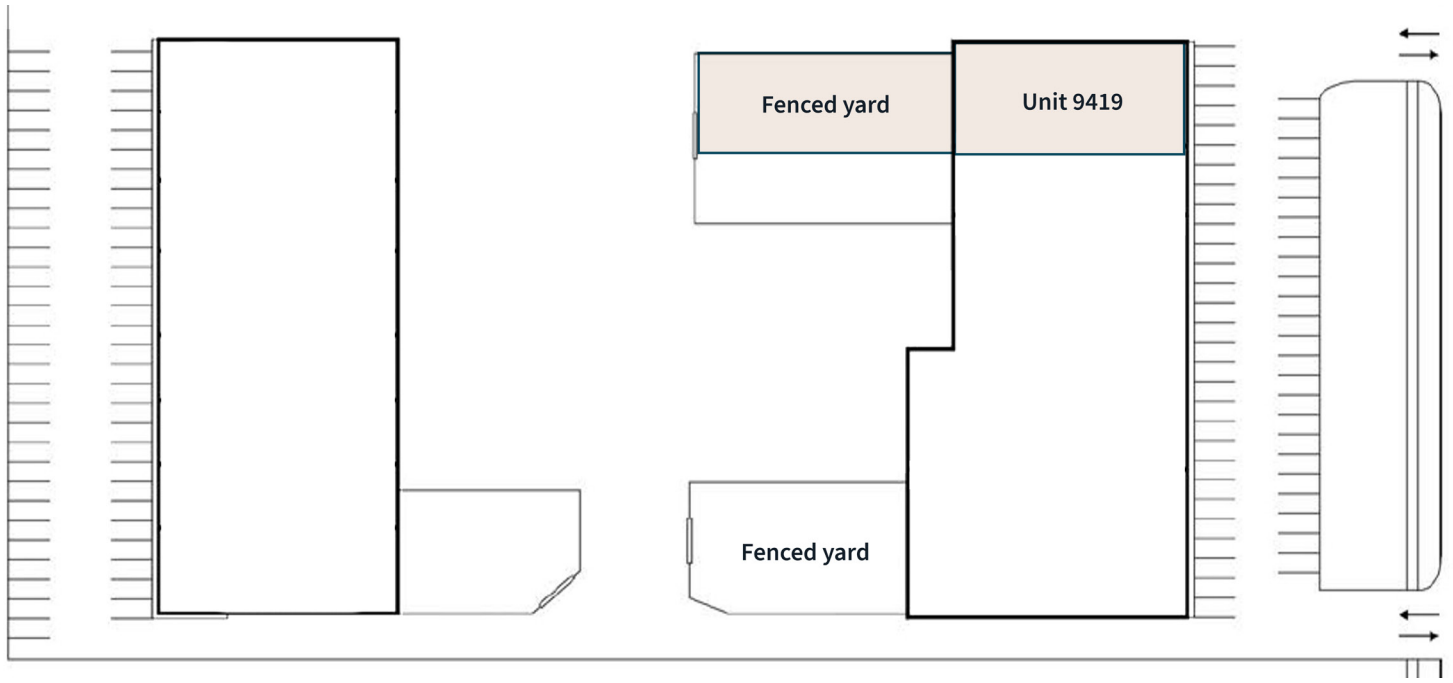


51 Avenue

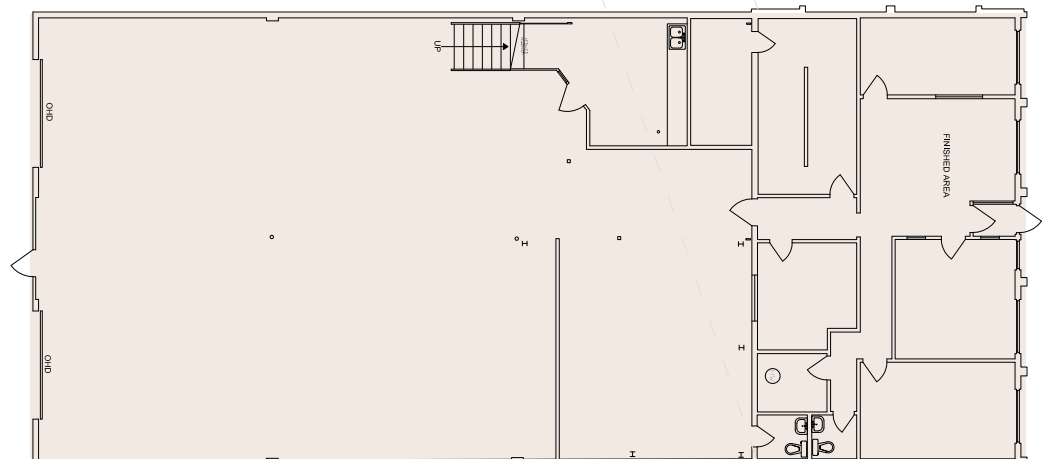
## Property Details

<b>Municipal Address</b>	9403/43 51 Avenue, Edmonton
<b>Zoning</b>	BE - Business Employment
<b>Available Area</b>	Unit 9419: ±5,527 SF
<b>Year Built</b>	1975
<b>Construction</b>	Concrete block
<b>Power</b>	TBC by Tenant
<b>Ceiling Height</b>	15' - 17' Clear
<b>Heating</b>	Overhead gas fired units
<b>Lighting</b>	LED & Fluorescent
<b>Sprinklered</b>	TBD

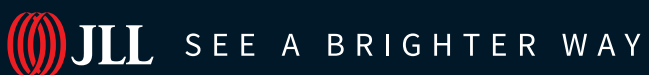
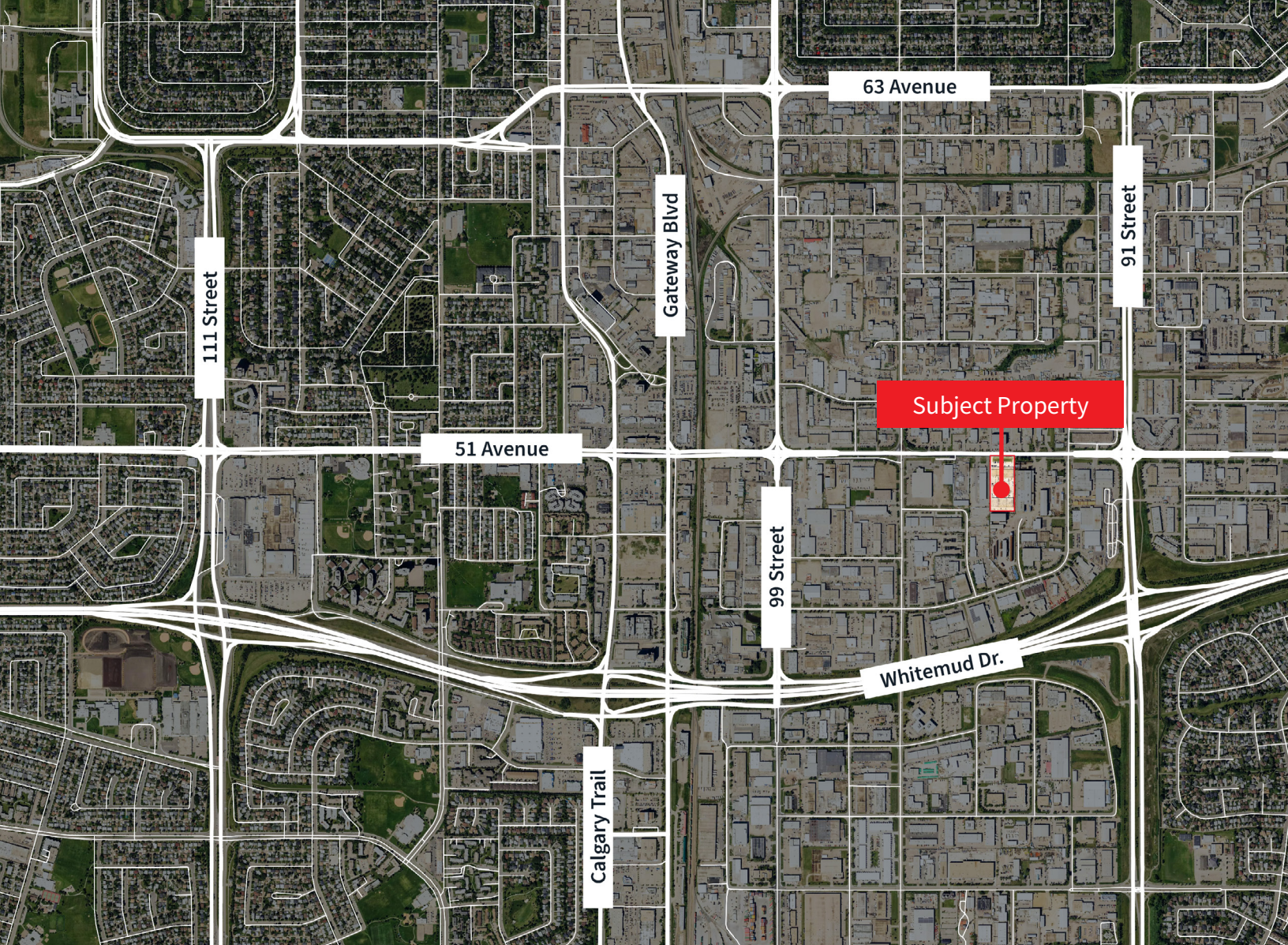
<b>Loading</b>	Unit 9419: (2) 12' x 14' Grade doors
<b>Drainage</b>	Sump
<b>Parking</b>	Scramble
<b>Signage</b>	Fascia
<b>Yard</b>	Fenced yard compound
<b>Lease Rate (PSF)</b>	\$11.00
<b>Op. Costs (PSF)</b>	\$6.95



**Unit 9419:**  
 ±5,527 SF  
 (2) 12' x 14' Grade doors  
 Fenced yard compound  
 Available March 1st, 2026







**Darryl McGavigan**  
Executive Vice President  
780 328 0064  
[Darryl.McGavigan@jll.com](mailto:Darryl.McGavigan@jll.com)

**Kent Simpson**  
Vice President  
780 203 0425  
[Kent.Simpson@jll.com](mailto:Kent.Simpson@jll.com)

**Adam Butler**  
Executive Vice President  
780 328 0065  
[Adam.Butler@jll.com](mailto:Adam.Butler@jll.com)

**Mackenzie York**  
Associate Vice President  
780 920 8463  
[Mackenzie.York@jll.com](mailto:Mackenzie.York@jll.com)

**Bronwyn Scrivens**  
Vice President, SIOR  
780 807 4564  
[Bronwyn.Scrivens@jll.com](mailto:Bronwyn.Scrivens@jll.com)

**Kailee Campbell**  
Senior Transaction Analyst  
780 328 0069  
[Kailee.Campbell@jll.com](mailto:Kailee.Campbell@jll.com)

**JLL Edmonton Industrial** | Suite 2101, 10088 102 Avenue NW Edmonton, Alberta T5J 2Z1

DISCLAIMER: ©2025 Jones Lang LaSalle IP, Inc. All rights reserved. All information contained herein is from sources deemed reliable; however, no representation or warranty is made to the accuracy thereof. The Property may be withdrawn without notice. Neither Owner nor JLL accepts any liability for any loss or damage suffered by any party resulting from reliance on this information. Jones Lang LaSalle Real Estate Services, Inc.