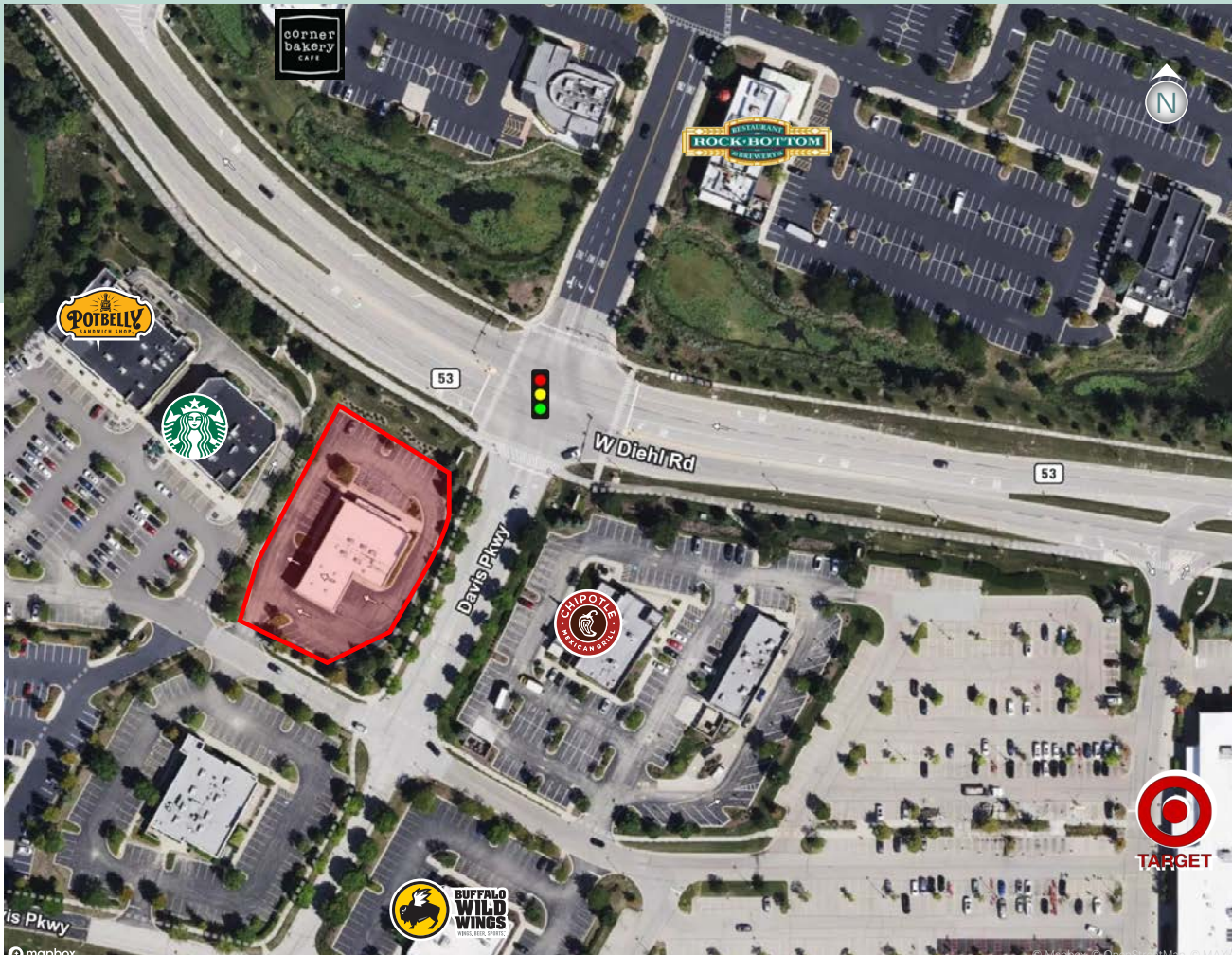


# Cantera Commons

Retail Space Available | +/- 4,826 SF

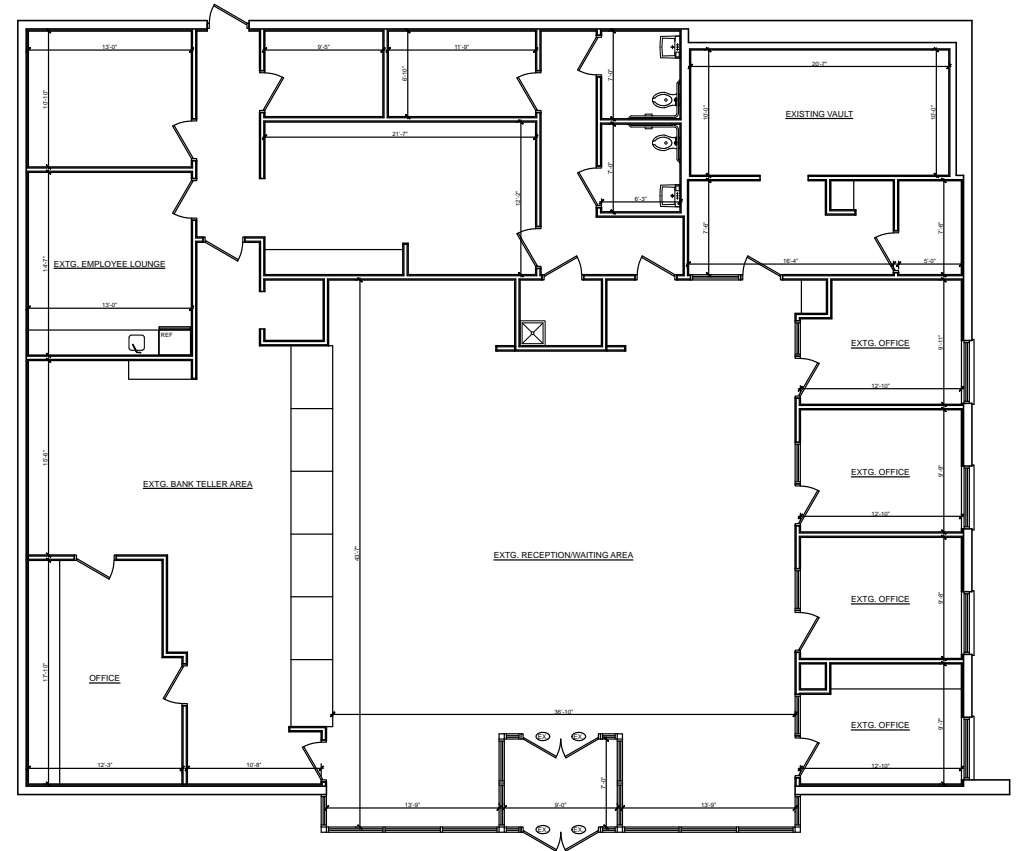
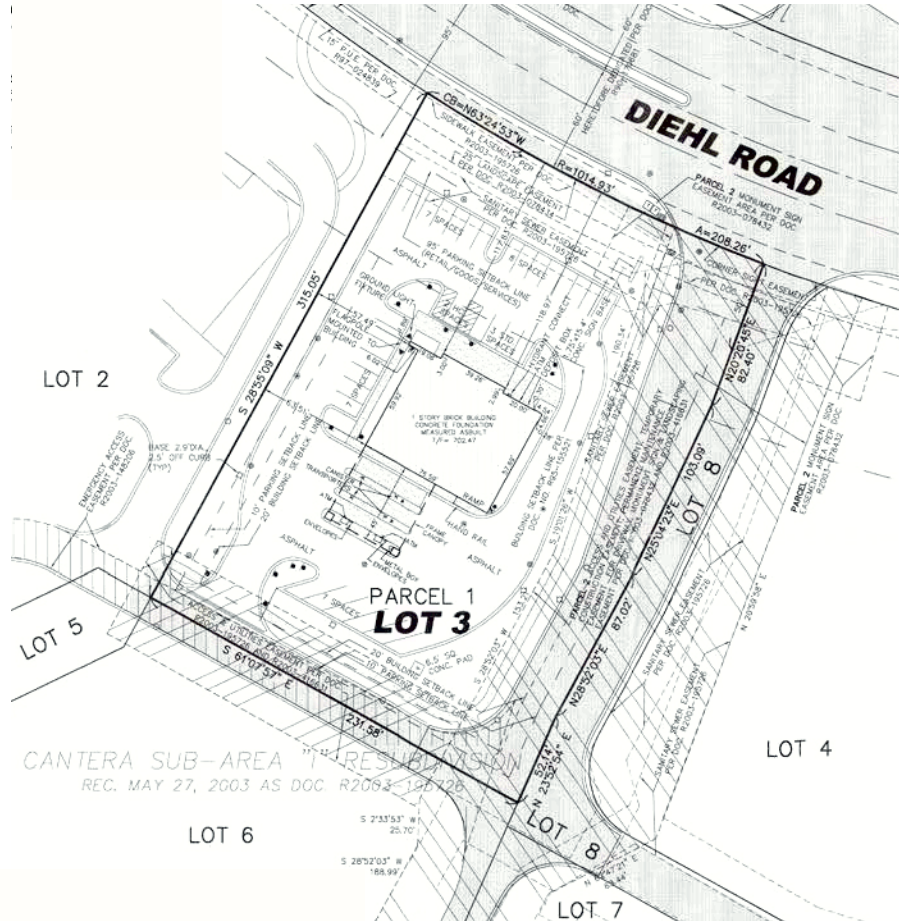
28301 Diehl Road | Warrenville, Illinois 60555



## Property Information

- + +/- 4,826 SF Available
- + Former Bank of America
- + Site has great access and visibility
- + Located in an affluent market serving Naperville and Warrenville
- + Dense population with disposable income
- + Over 2.5 million square feet of office space in the immediate area
- + Adjacent to Target, Lifetime Fitness and Cinemark Theatres
- + 1 mile from I-88 Expressway and Winfield Road full interchange
- + Daytime population is over 13,000 within 1 mile!

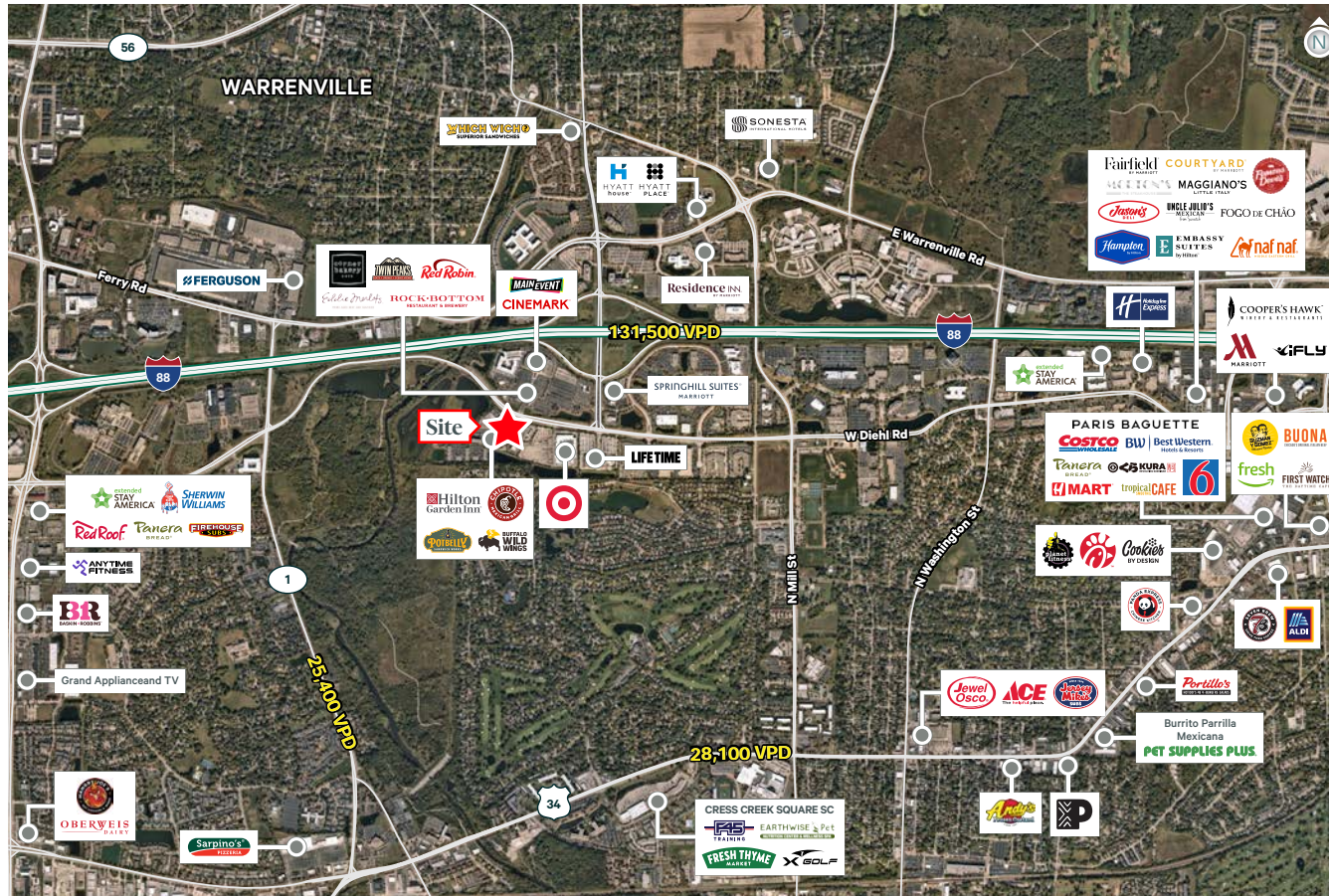
## Survey & Floor Plan



Demographics	1 Mile	3 Mile	5 Mile
Population	5,363	69,053	188,365
Average HH Income	\$168,741	\$152,681	\$166,248
Daytime Population	13,555	102,402	238,285
Employees	12,311	87,399	158,146

Traffic Counts	
I-88	131,500 VPD





## Contact Us

Les Kristof  
Vice President  
+1 630 573 1282  
[Les.Kristof@cbre.com](mailto:Les.Kristof@cbre.com)

© 2025 CBRE, Inc. All rights reserved. This information has been obtained from sources believed reliable but has not been verified for accuracy or completeness. CBRE, Inc. makes no guarantee, representation or warranty and accepts no responsibility or liability as to the accuracy, completeness, or reliability of the information contained herein. You should conduct a careful, independent investigation of the property and verify all information. Any reliance on this information is solely at your own risk. CBRE and the CBRE logo are service marks of CBRE, Inc. All other marks displayed on this document are the property of their respective owners, and the use of such marks does not imply any affiliation with or endorsement of CBRE. Photos herein are the property of their respective owners. Use of these images without the express written consent of the owner is prohibited.