



FOR SALE

18± Acres for Residential Use or Commerical Potential



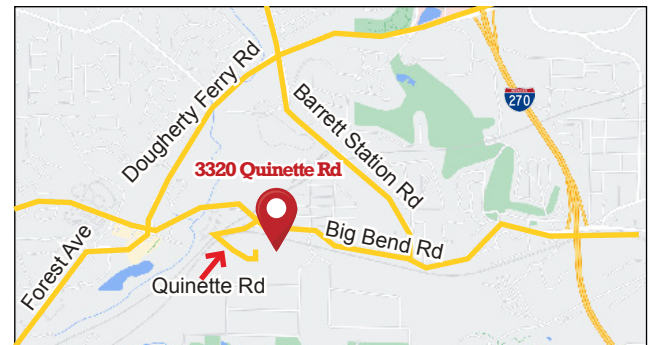
3320 Quinette Rd. | St. Louis, MO 63122

Sale Price: \$995,000

- Rare Large Acreage Tract in the Heart of St. Louis County
- Zoned Non-Urban with Residential and Commercial Development Potential
- Valley Park School District
- Natural Setting with Long Views to the North and South
- Owner is Open to Reasonable Subdivision

Contact: Jeff Price
 jprice@hillikercorp.com
 Hal C. Ball, SIOR
 hball@hillikercorp.com

Co-listed with:
 Fred Thatcher, Fred O. Thatcher Realtors
 fredothatcher@gmail.com



Commercial Real Estate
 1401 S. Brentwood Blvd. Suite 650
 St. Louis, MO 63144
 www.hillikercorp.com

314-781-0001



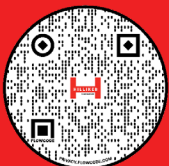
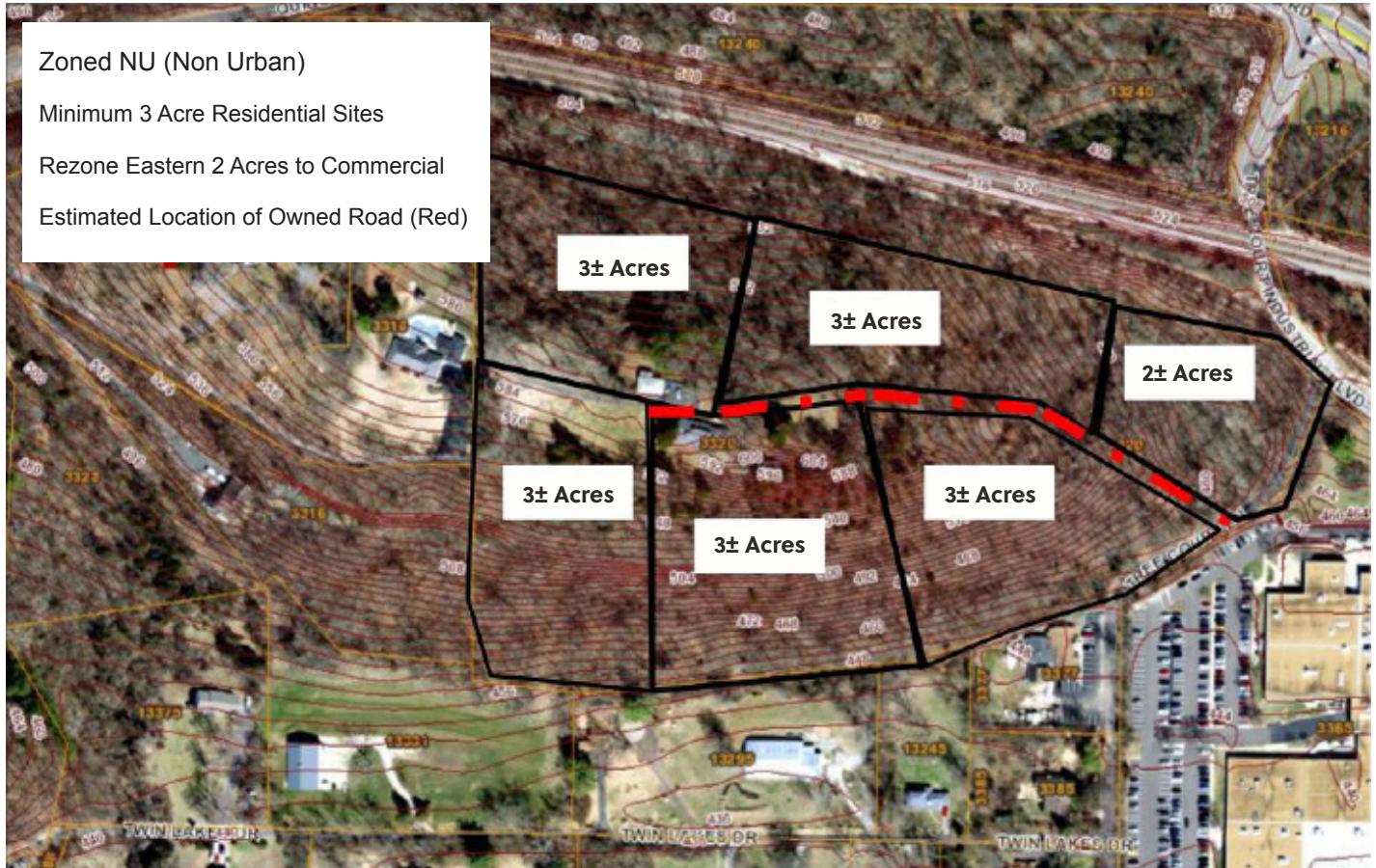
Individual Memberships in the Society
 of industrial and Office Realtors



FOR SALE

18± Acres With Multiple Development Sites

Potential Development Option



Commercial Real Estate
1401 S. Brentwood Blvd. Suite 650
St. Louis, MO 63144
www.hillikercorp.com



Individual Memberships in the Society
of Industrial and Office Realtors

314-781-0001