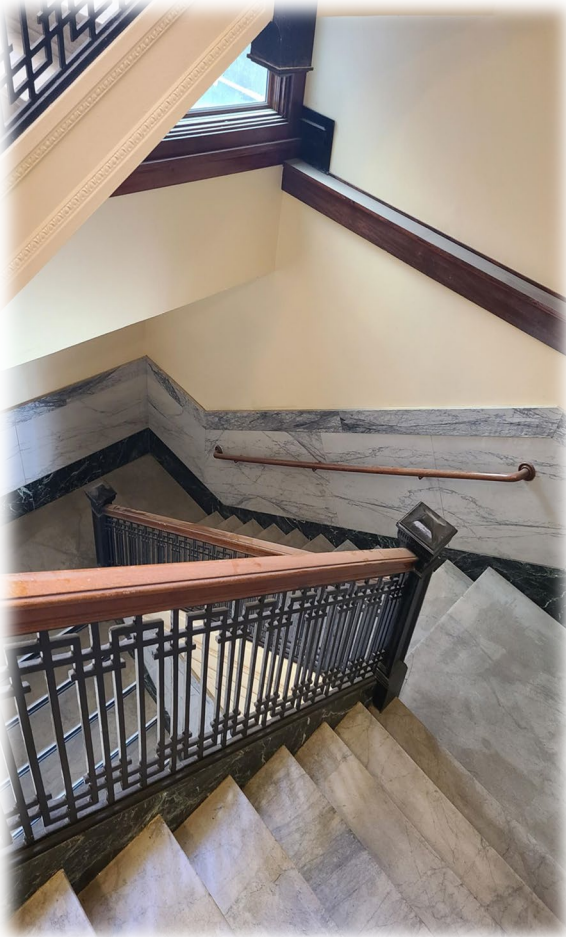


501-511 Main St.
Woodland, CA 95695

The Porter Building

For Lease



Mike Brodovsky - 916.955.1053 - Mike@Brodovsky.com - Lic. 01892483



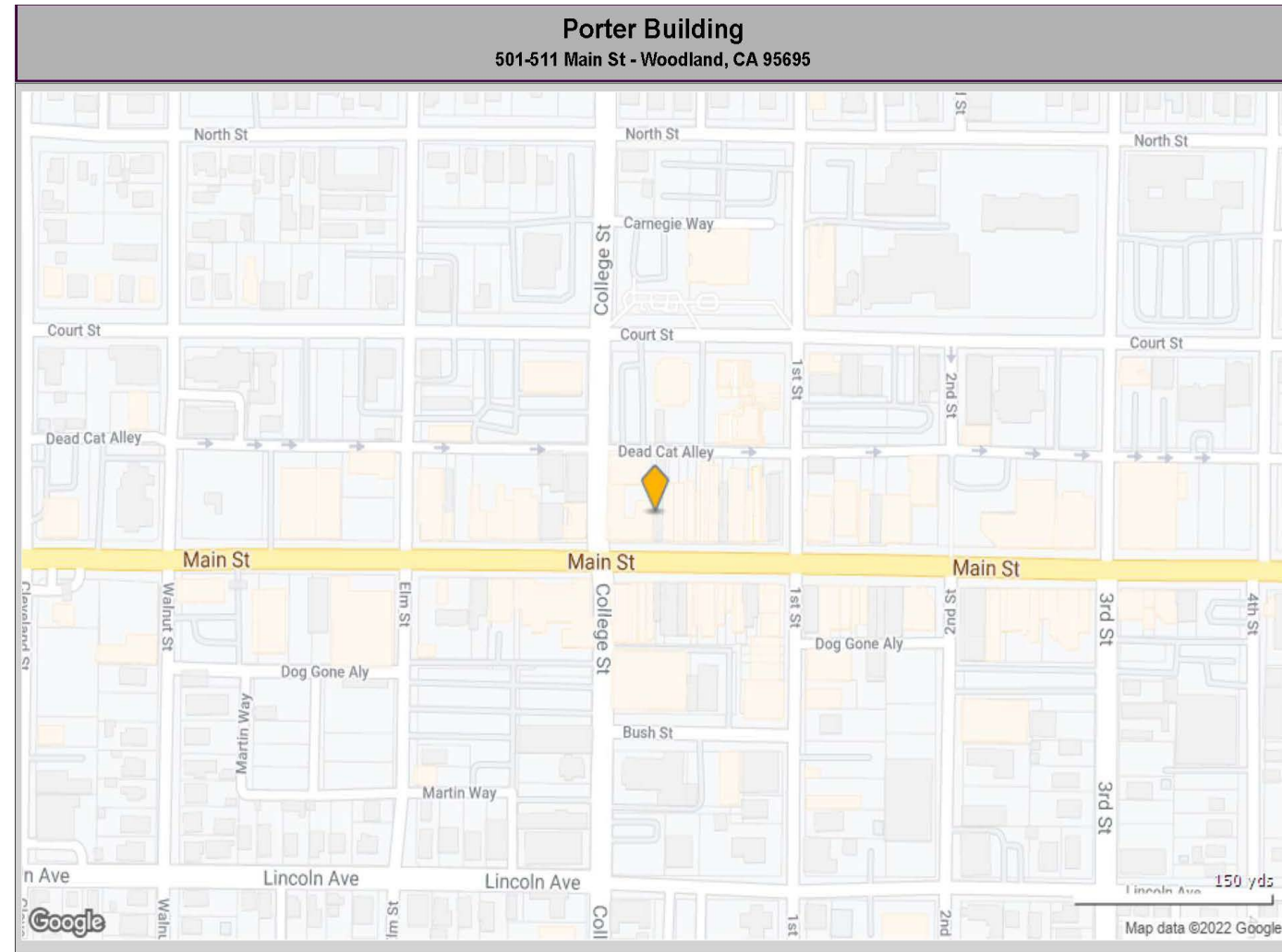
501-511 Main St.
Woodland, CA 95695

The Porter Building

For Lease

The Porter Building is a historic building listed on the [National Register of Historic Places](#) located in the [Downtown Historic District](#) of [Woodland, California](#).

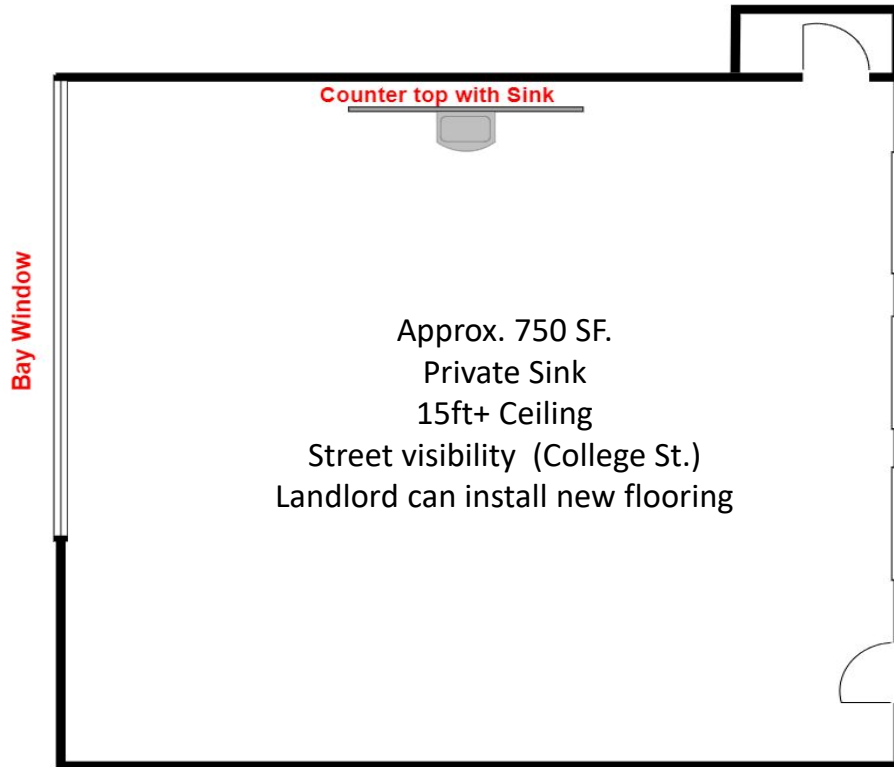
The building's exterior includes buff-colored Roman brick with elaborately decorated cornice and an arched entrance way that leads into the building's lobby. The building had many modern amenities that were rare for its era, some of which were "firsts" for Woodland, including an electric elevator. The arched entry door at 511 Main St. has been featured on the cover of many magazines. The marble staircases and beautiful railings are rarely seen today. The Offices have 10-foot coffered ceilings with lovely, turn-of-the century lighted ceilings. The retail/office spaces on the first-floor host 16-foot coffered ceilings.



501-511 Main St.
Woodland, CA 95695

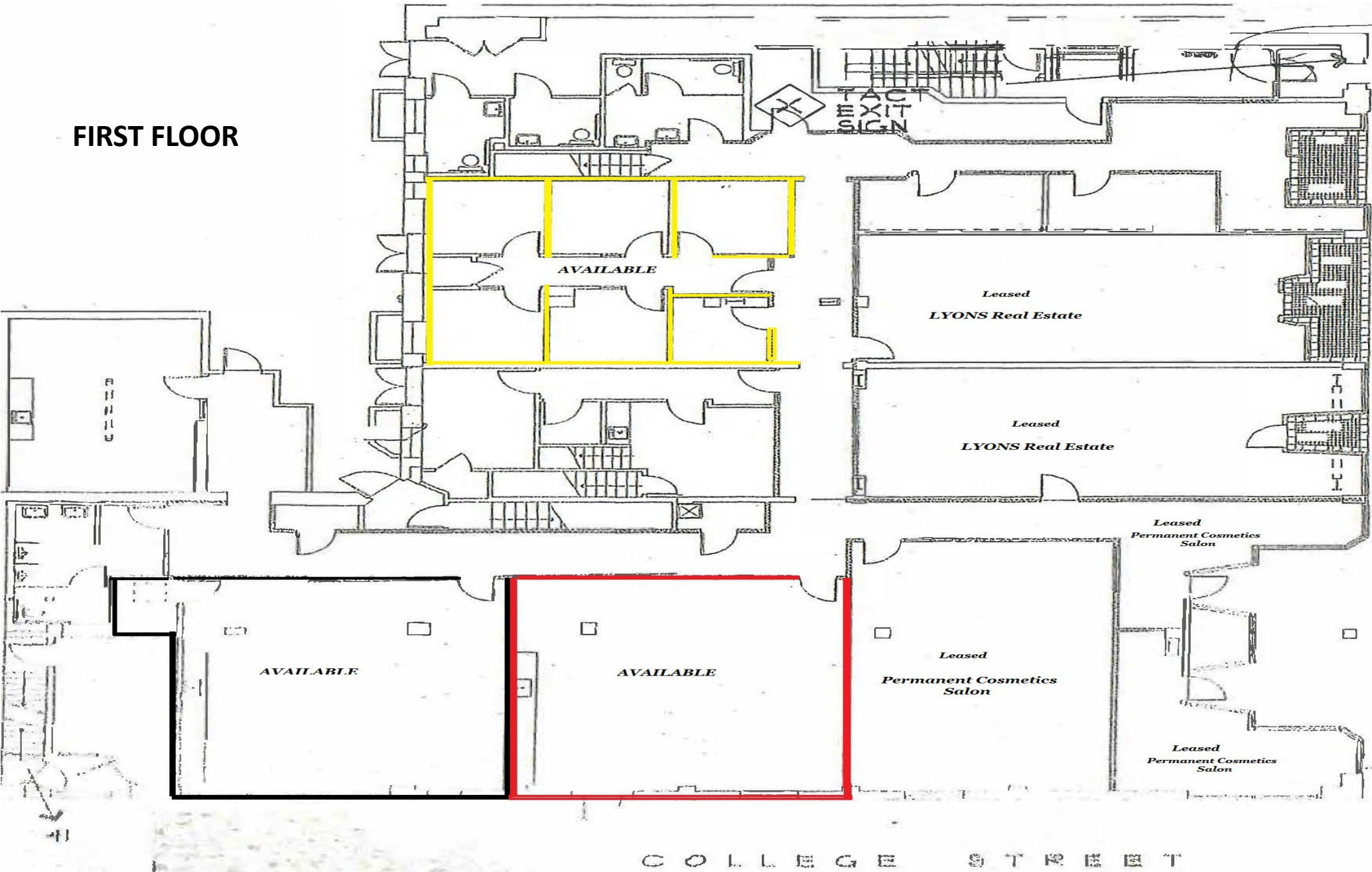
The Porter Building

For Lease



This information found in this packet has been obtained from sources believed reliable. We have not verified it and make no guarantee, warranty or representation about it

FIRST FLOOR



501-511 Main St.
Woodland, CA 95695

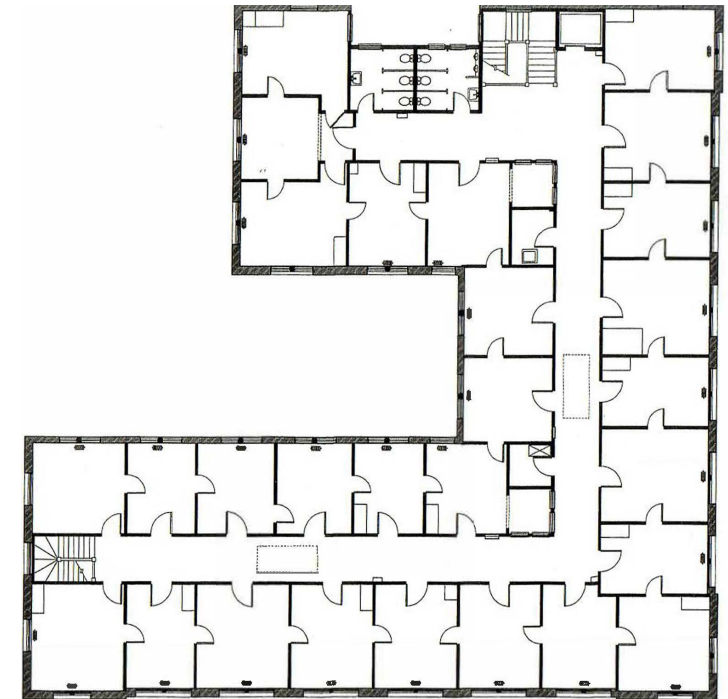
The Porter Building

For Lease



SECOND FLOOR - PORTER BUILDING

- ✓ Small private offices available
- ✓ Internet and utilities included
- ✓ Elevator



THIRD FLOOR - PORTER BUILDING