

FOUNTAIN PLAZA

Under New Ownership



Multiple Retail Spaces For Lease

2800 N MACDILL AVENUE
TAMPA, FL 33607



8,772 SF retail space in the shopping center, pricing negotiable



One of the fastest-growing and most dynamic retail markets in the U.S.



Daily traffic counts exceeding prime exposure with over 47,000 daily drivers



Strategically positioned at a busy, signalized corner offering strong visibility

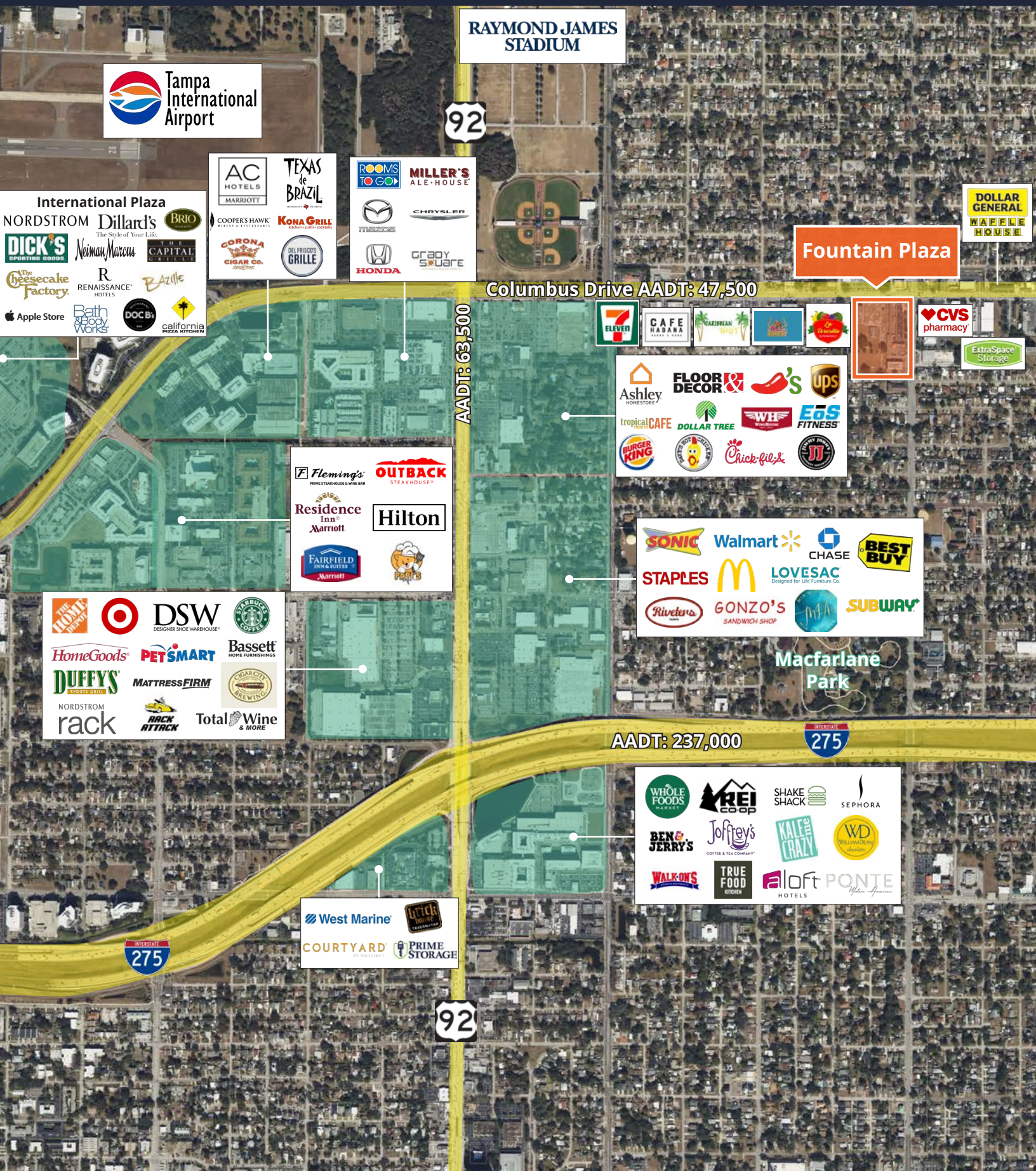
For further information

Nick Mastro, Associate
813. 444. 5334
nick.mastro@avisonyoung.com

Nick Robinson, Senior Vice President
352. 565. 4517
nick.robinson@avisonyoung.com

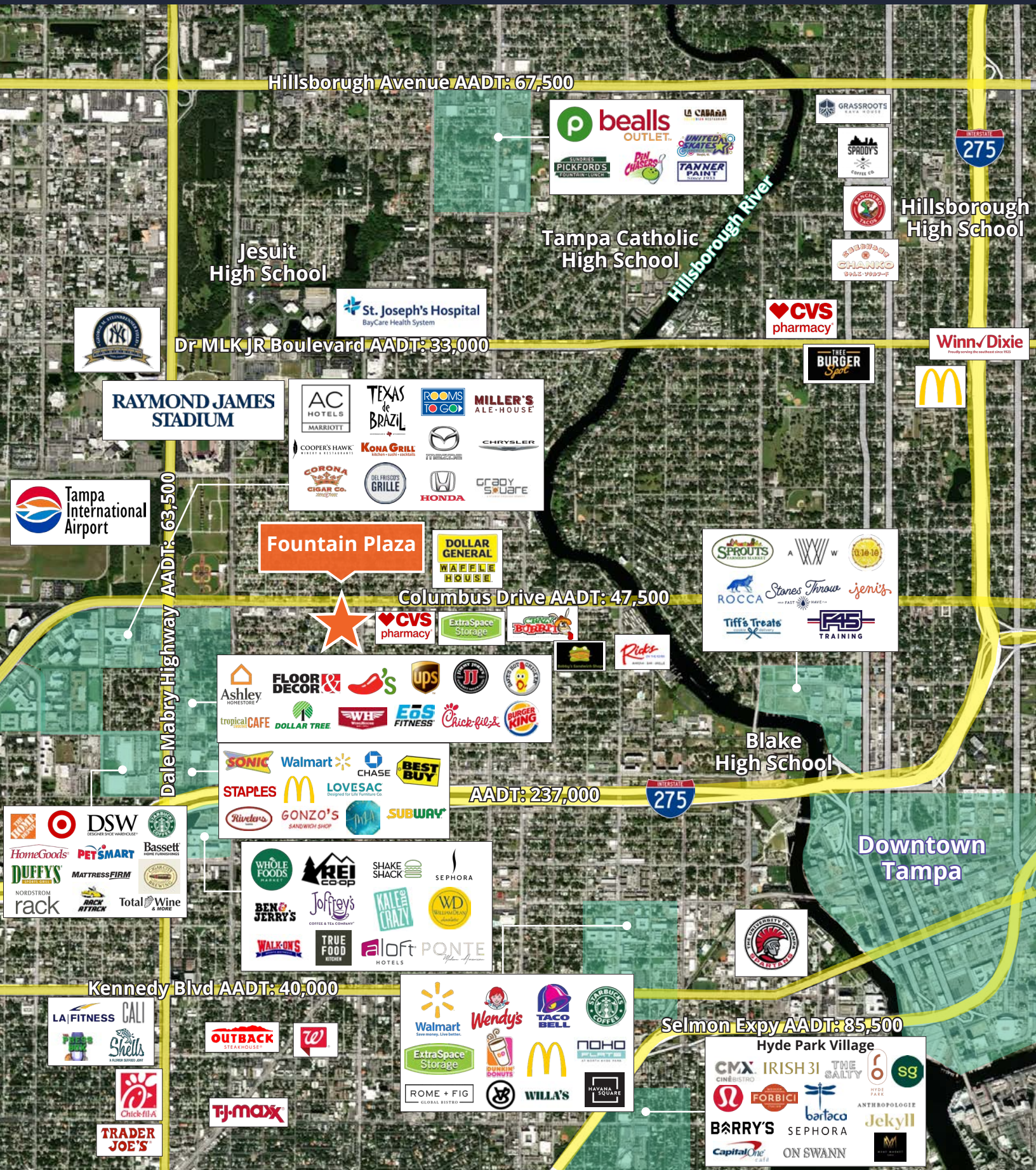
**AVISON
YOUNG**

FOUNTAIN PLAZA
Tampa, FL



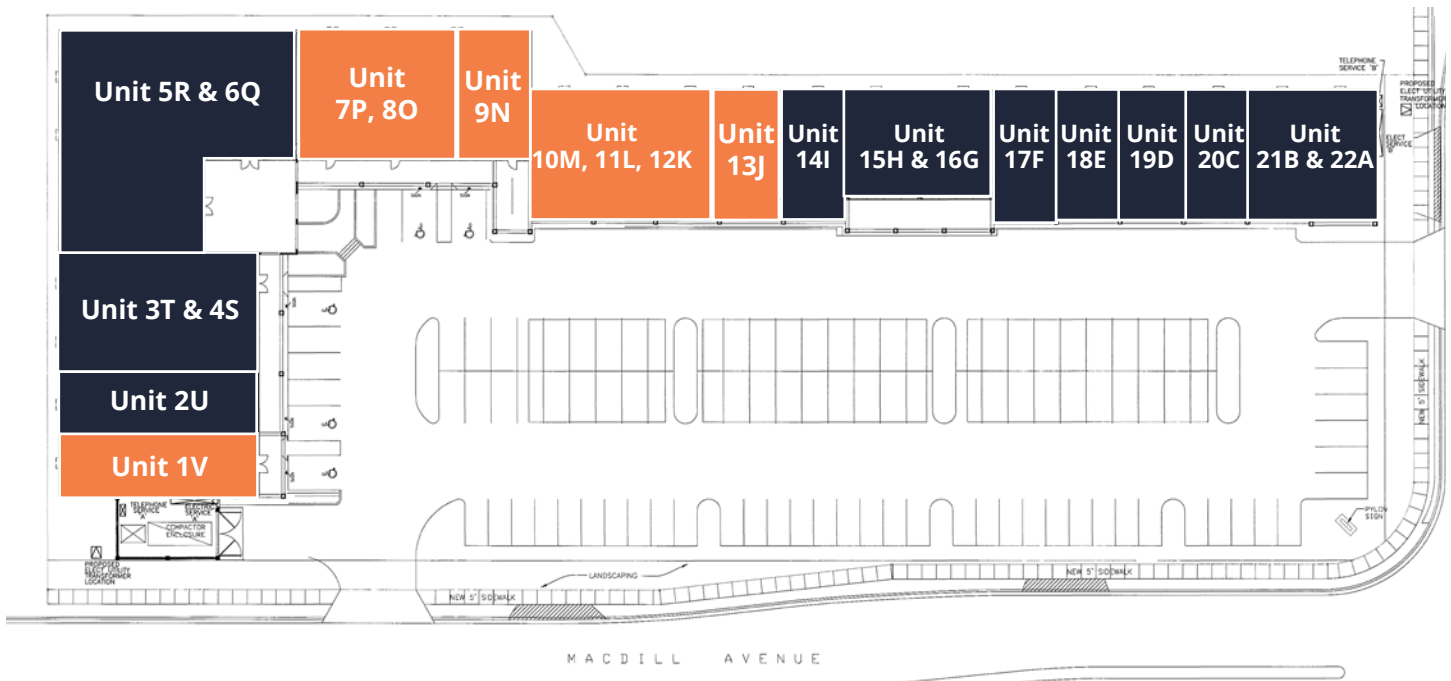
Aerial map

FOUNTAIN PLAZA
Tampa, FL



Site plan

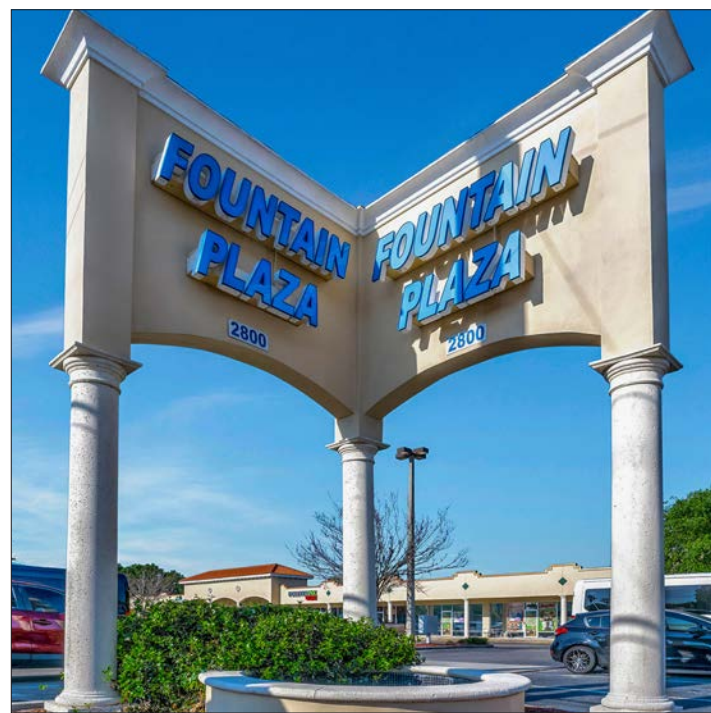
FOUNTAIN PLAZA
Tampa, FL



UNIT NUMBER	SQUARE FOOTAGE	CURRENT TENANT
1V	1,505 SF	VACANT
2U	1,505 SF	ABC Home Care
3T & 4S	3,552 SF	Mobility City of Tampa
5R & 6Q	3,424 SF	Westside Barber
7P, 8O	2,566 SF	VACANT
9N	1,452 SF	VACANT
10M, 11L, 12K	2,413 SF	VACANT
13J	836 SF	VACANT
14I	836 SF	Mid Town Nutrition
15H & 16G	1,938 SF	Celestial Beauty Salon
17F	836 SF	Forever Ink
18E	836 SF	Taqueria
19D & 20C	1,710 SF	Abuelos Adult Day Care
21A & 22B	1,672 SF	A-1 Insurance

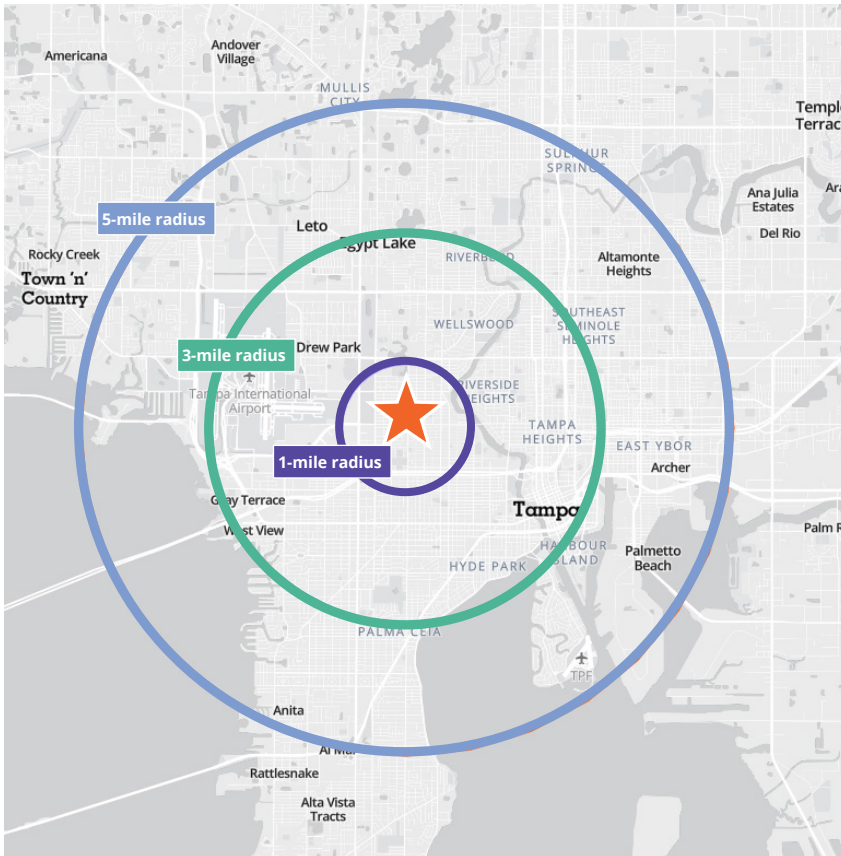
Property photos

FOUNTAIN PLAZA
Tampa, FL



Demographics

FOUNTAIN PLAZA
Tampa, FL



Population: Over 290,000 people within a five mile radius.



Home Value: Median home value of \$492,863 within a five mile radius.



Density: Over 128,00 households within a five mile radius.



Income: Median household income of \$128,575 within a five mile radius.



Age: Median age of 37 within a five mile radius.



Employment: Employment population of over 254,508 within a five mile radius.

Population	1 Miles	3 Miles	5 Miles
Total population	16,327	126,116	291,744
Median age	38	36	37
Households & Income	1 Miles	3 Miles	5 Miles
Total households	6,884	58,258	128,575
Median HH income	\$63,615	\$88,794	\$88,827
Median house value	\$339,663	\$507,016	\$492,863
Businesses	1 Miles	3 Miles	5 Miles
Total businesses	1,732	17,995	32,871
Total employees	11,905	153,974	254,508

If you would like to discuss this further, please get in touch.



Nick Mastro, Associate

813. 444. 5334

nick.mastro@avisonyoung.com



Nick Robinson, Senior Vice President

352. 565. 4517

nick.robinson@avisonyoung.com



Visit us online

avisonyoung.com