

1330 PIEDMONT AVENUE
TROY, MICHIGAN

INDUSTRIAL FOR LEASE
14,240 Square Feet Available



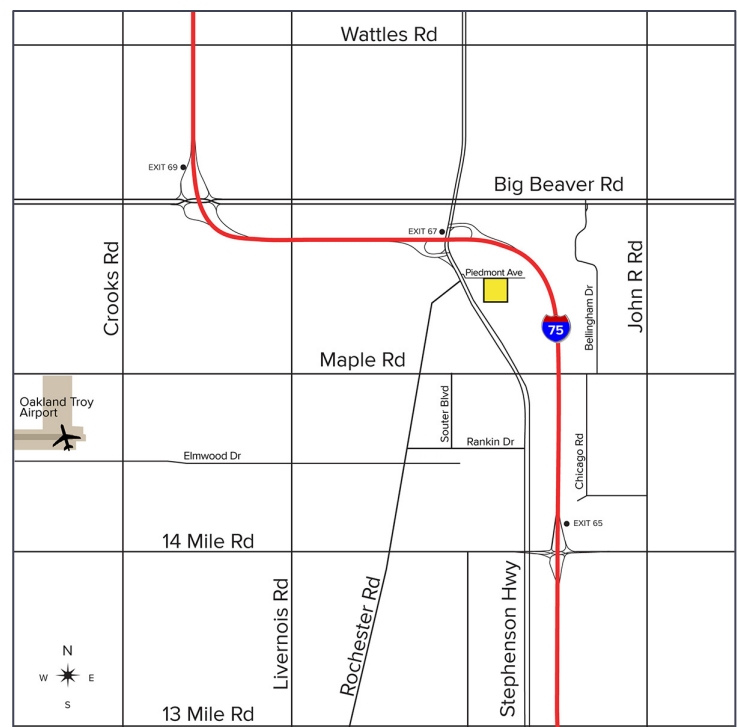
**SIGNATURE
ASSOCIATES**
KNOW SIGNATURE | KNOW RESULTS

U.S. TSUBAKI



PROPERTY FEATURES

- 14,240 square feet available
- 4,640 square feet of office
- 16' clear height
- (2) 12x14 grade level doors
- Zoned I-1
- 43 parking spaces
- 1,200 amps, 240 volts, 3-phase power
- Fully fire suppressed
- Direct access to I-75 at Big Beaver Road
- Piedmont was recently paved
- Rare versatile building with flexible zoning
- Lease Rate: \$8.75/sq. ft. NNN



For more information, please contact:

KRIS PAWLOWSKI
(248) 359 3801
kpawlowski@signatureassociates.com

JOHN BOYD
(248) 948 0102
jboyd@signatureassociates.com

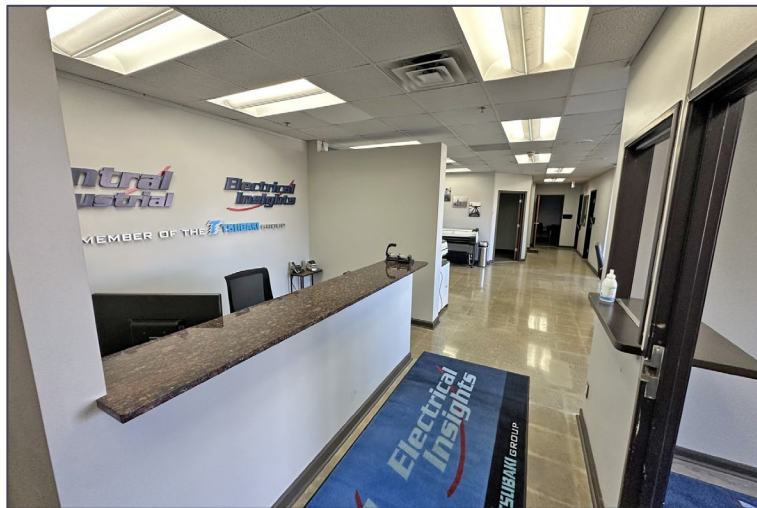
SIGNATURE ASSOCIATES
One Towne Square, Suite 1200
Southfield, MI 48076
www.signatureassociates.com

1330 Piedmont Avenue – Troy, Michigan

Industrial For Lease

14,240
Square Feet
AVAILABLE

Interior Photos



For more information, please contact:

KRIS PAWLOWSKI
(248) 359 3801
kpawlowski@signatureassociates.com

JOHN BOYD
(248) 948 0102
jboyd@signatureassociates.com

SIGNATURE ASSOCIATES
One Towne Square, Suite 1200
Southfield, MI 48076
www.signatureassociates.com

Information is subject to verification and no liability for errors or omissions is assumed. Price is subject to change and listing withdrawal.

1330 Piedmont Avenue – Troy, Michigan

Industrial For Lease

14,240
Square Feet
AVAILABLE

Interior Photos



For more information, please contact:

KRIS PAWLOWSKI
(248) 359 3801
kpawlowski@signatureassociates.com

JOHN BOYD
(248) 948 0102
jboyd@signatureassociates.com

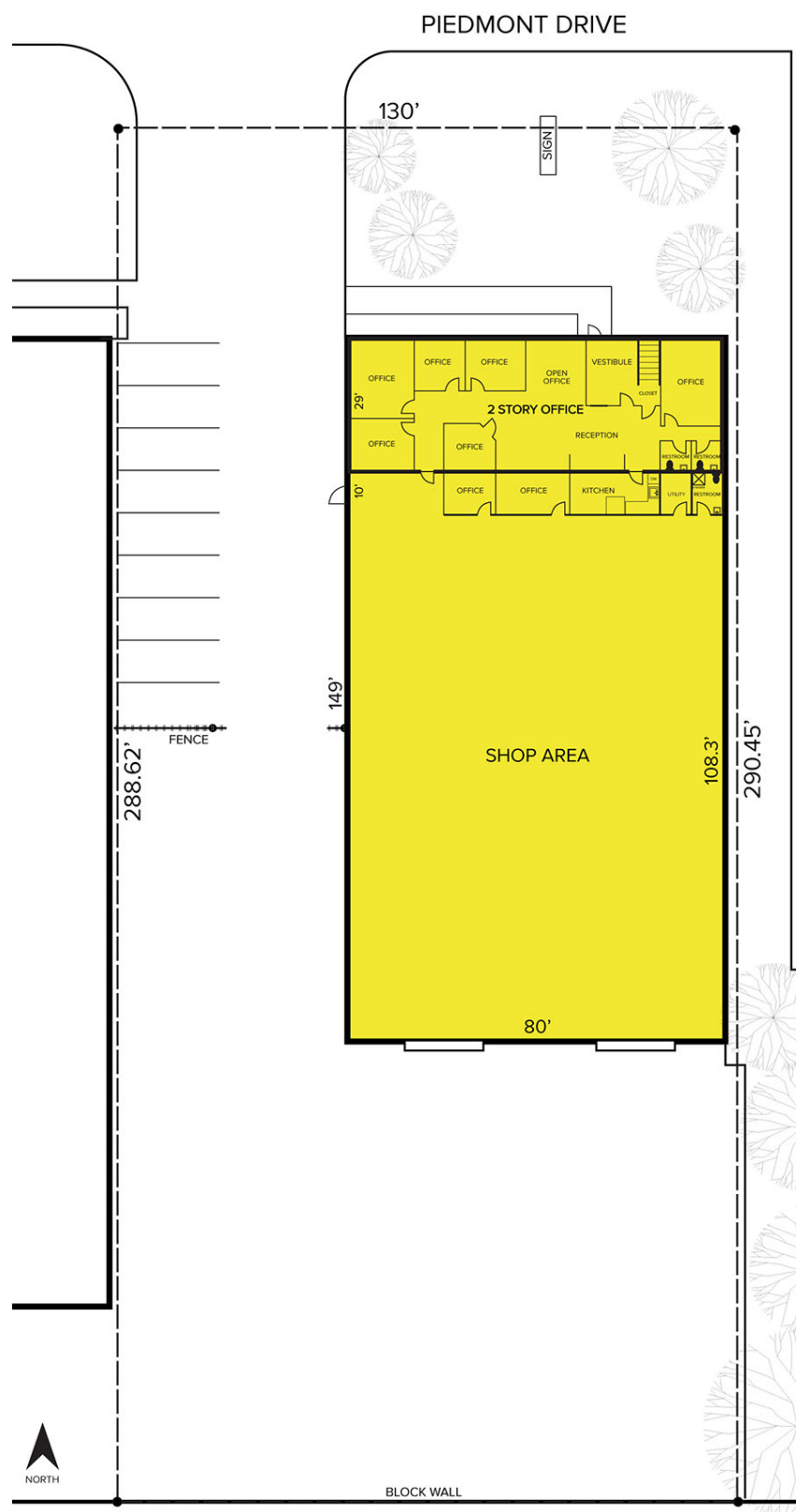
SIGNATURE ASSOCIATES
One Towne Square, Suite 1200
Southfield, MI 48076
www.signatureassociates.com

1330 Piedmont Avenue – Troy, Michigan

Industrial For Lease

14,240
Square Feet
AVAILABLE

Site Plan



For more information, please contact:

KRIS PAWLOWSKI
(248) 359 3801
kpawlowski@signatureassociates.com

JOHN BOYD
(248) 948 0102
jboyd@signatureassociates.com

SIGNATURE ASSOCIATES
One Towne Square, Suite 1200
Southfield, MI 48076
www.signatureassociates.com

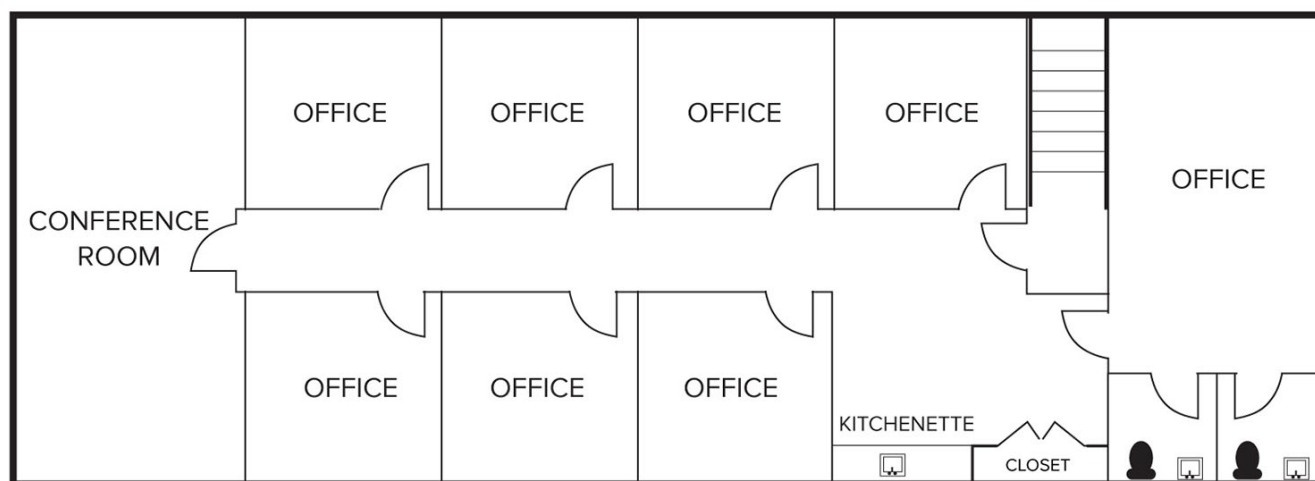
1330 Piedmont Avenue – Troy, Michigan

Industrial For Lease

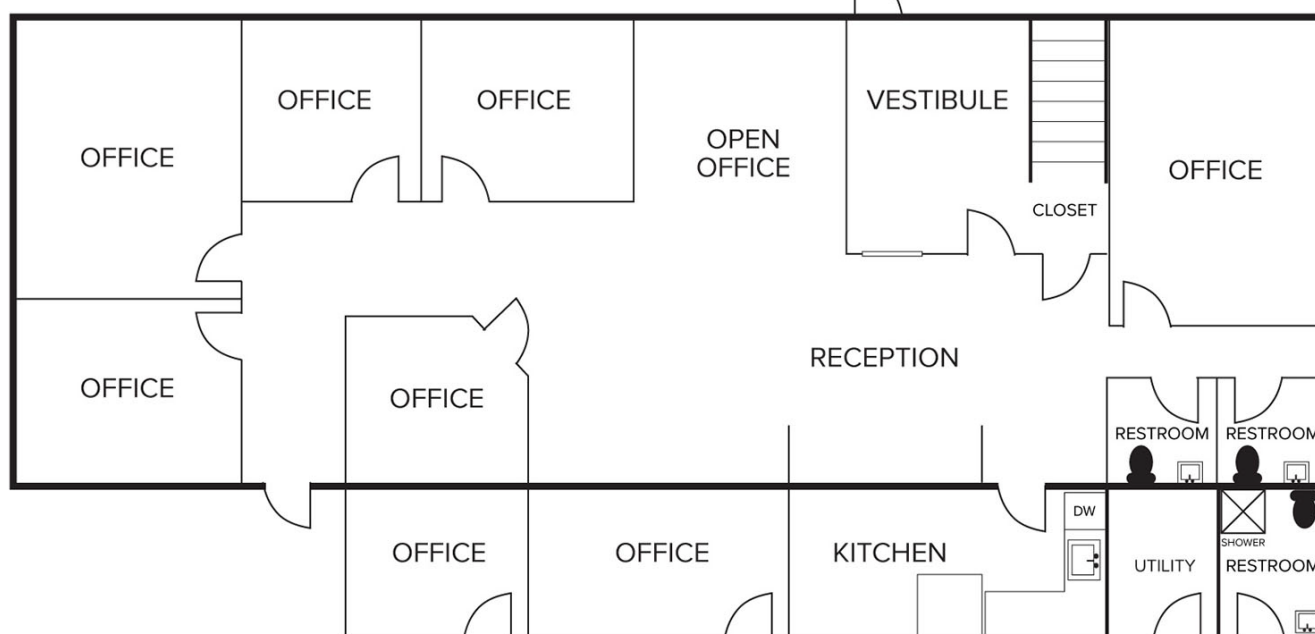
14,240
Square Feet
AVAILABLE

Floor Plan

SECOND FLOOR



FIRST FLOOR



For more information, please contact:

KRIS PAWLOWSKI
(248) 359 3801
kpawlowski@signatureassociates.com

JOHN BOYD
(248) 948 0102
jboyd@signatureassociates.com

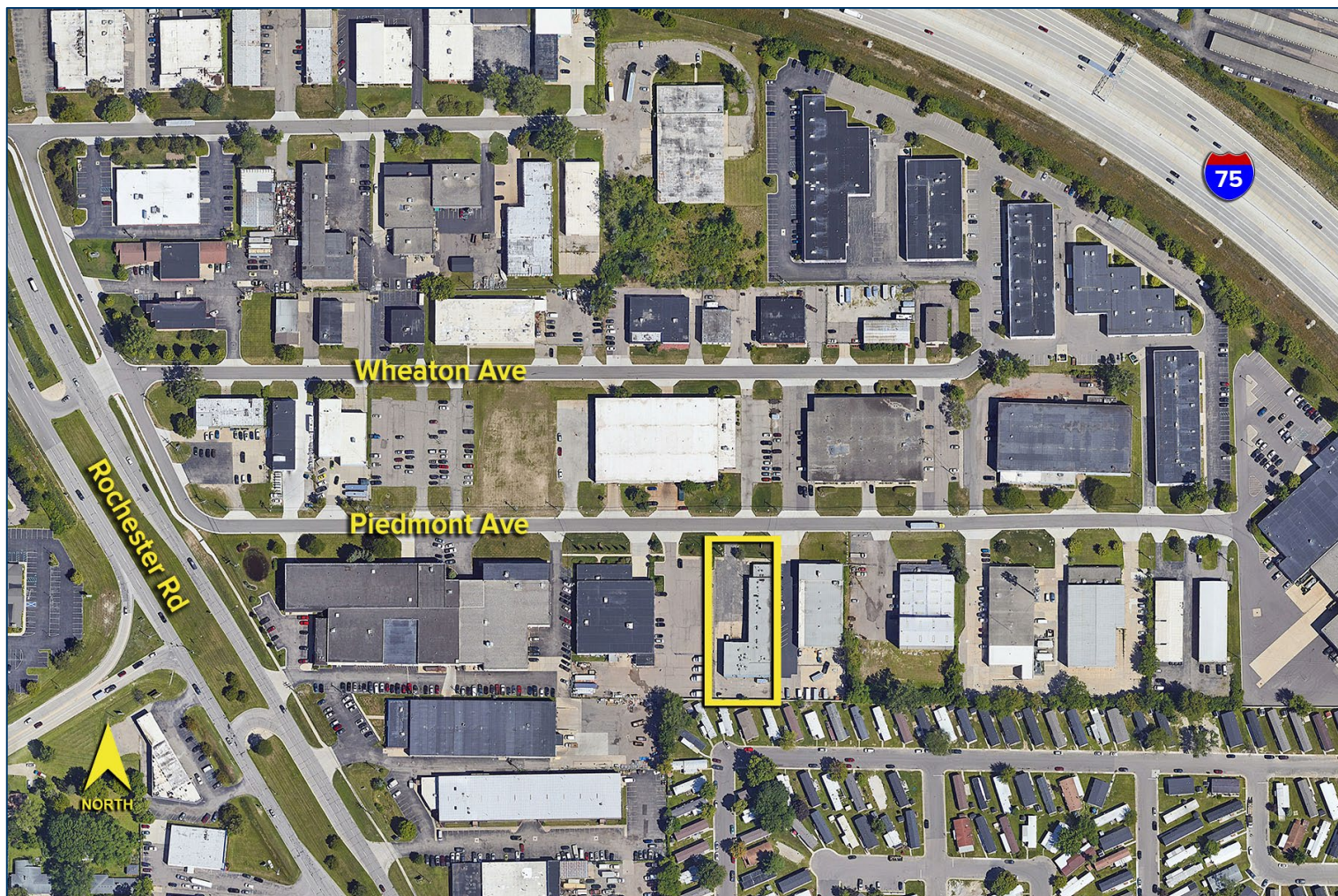
SIGNATURE ASSOCIATES
One Towne Square, Suite 1200
Southfield, MI 48076
www.signatureassociates.com

1330 Piedmont Avenue – Troy, Michigan

Industrial For Lease

14,240
Square Feet
AVAILABLE

Aerial



For more information, please contact:

KRIS PAWLOWSKI
(248) 359 3801
kpawlowski@signatureassociates.com

JOHN BOYD
(248) 948 0102
jboyd@signatureassociates.com

SIGNATURE ASSOCIATES
One Towne Square, Suite 1200
Southfield, MI 48076
www.signatureassociates.com

Information is subject to verification and no liability for errors or omissions is assumed. Price is subject to change and listing withdrawal.