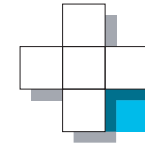


ST. MARY'S MEDICAL PAVILION



PMB

ADVANCING HEALTHCARE REAL ESTATE

1707 W. Saint Mary's Road | Tucson, AZ 85745



T **TRANSWESTERN[®]**

CARONDELET ST. MARY'S HOSPITAL CAMPUS

ST. MARY'S MEDICAL PAVILION

Located in the heart of
**Carondelet St. Mary's
Hospital Campus**



PROPERTY FEATURES

- Class A Medical Office Building
- Physician investment opportunities available
- Walking distance to hospital and ancillary buildings within the campus
- Expertly designed suites to accommodate today's efficient delivery models
- Servicing an outpatient service area of 350,000 patients
- Easy access to shopping, restaurants and the I-10 freeway
- Developed and professionally managed by PMB <https://learn.pmbllc.com/st-marys-leasing>

BUILD TO SUIT

OCCUPANCY:

\$24.00/SF

AVAILABLE SPACE:

Up to 11,394 RSF
(2nd floor only)

RBA WITH 2 STORIES:

±55,000 SF

TI ALLOWANCE:

Negotiable

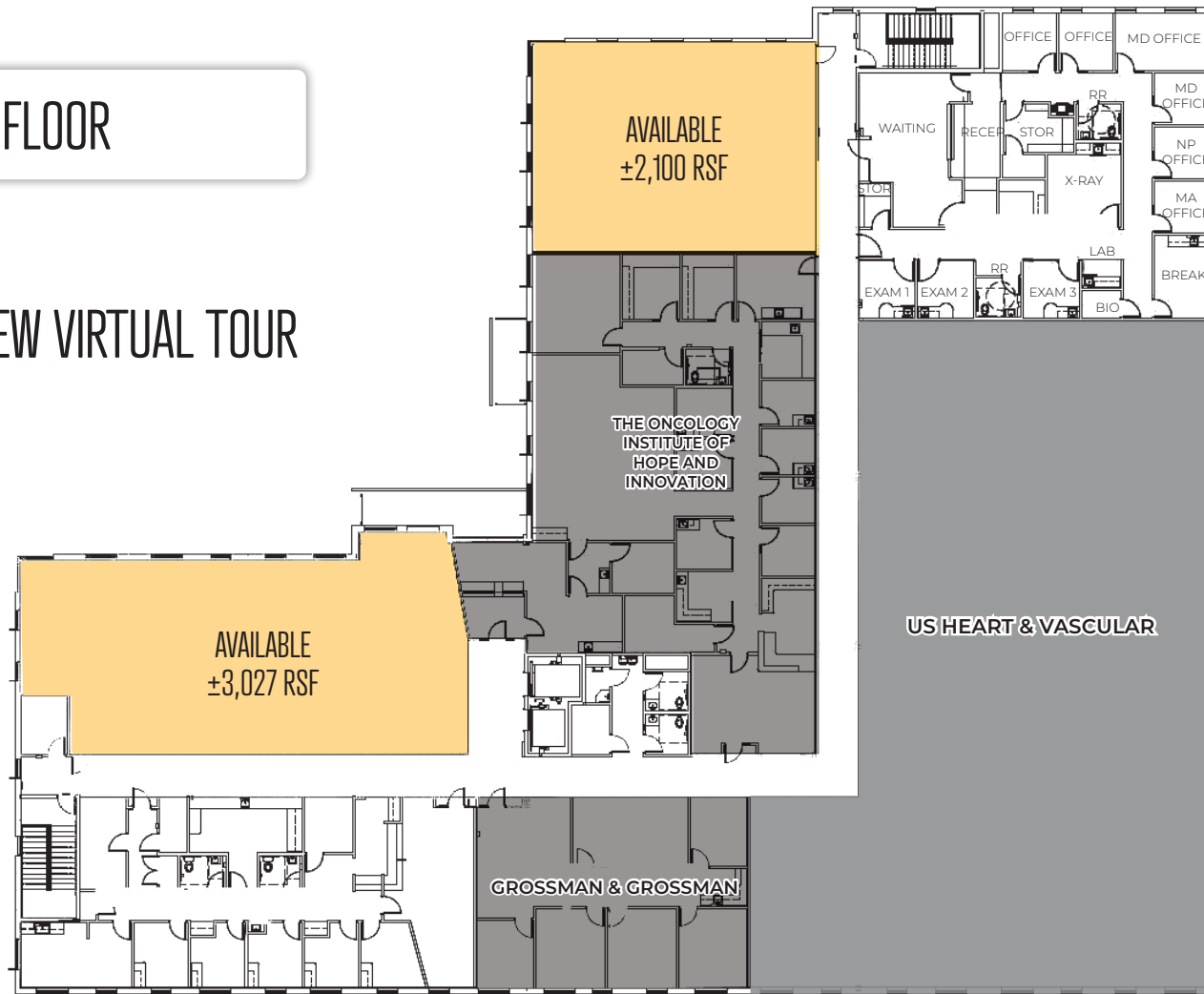
PARKING:

275 Spaces, 5/1,000 SF

FLOOR PLAN

2ND FLOOR

 360° VIEW VIRTUAL TOUR



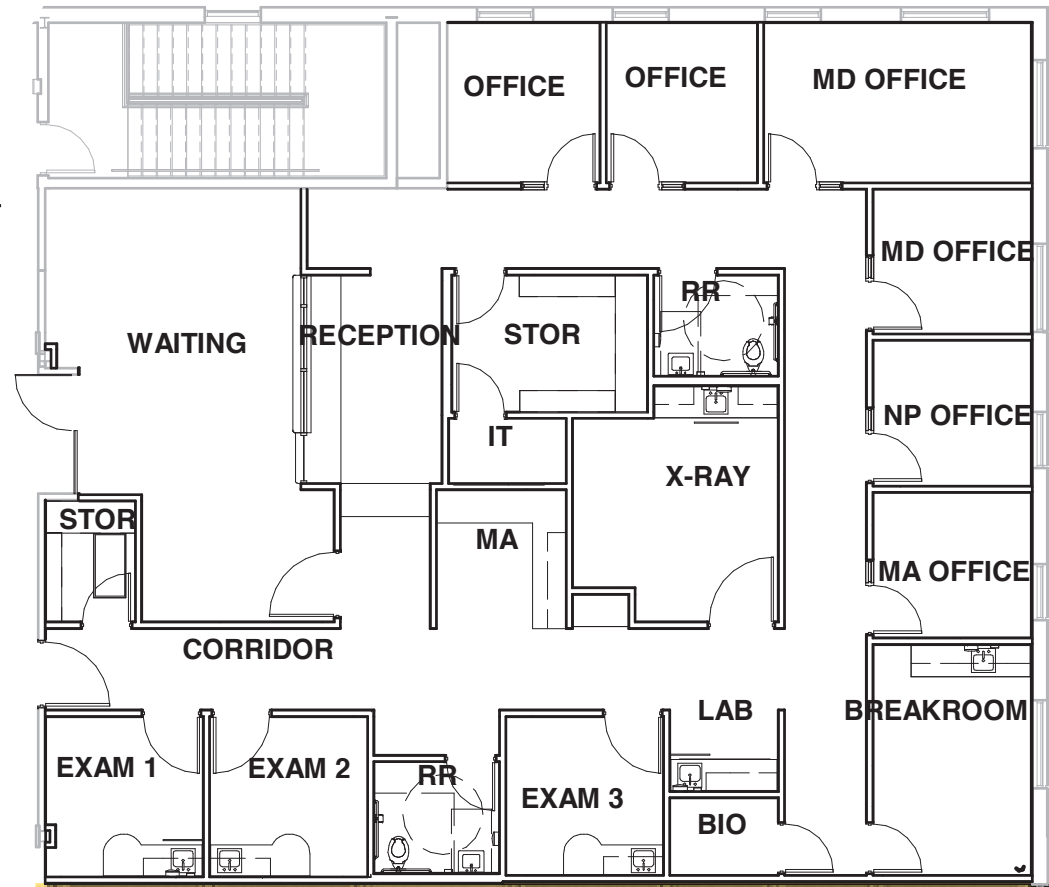
READY FOR OCCUPANCY
SUITE 205: ±3,460 RSF

READY FOR OCCUPANCY
SUITE 255: ±2,807 RSF

FLOOR PLAN

SUITE 205

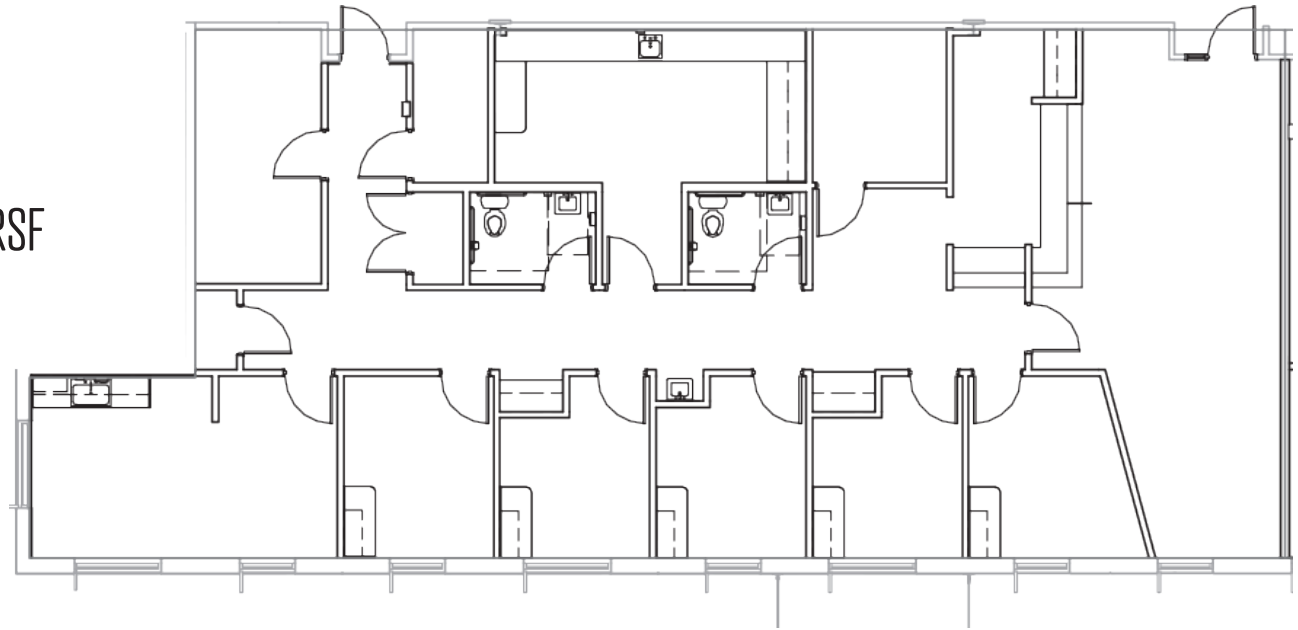
READY FOR OCCUPANCY | $\pm 3,460$ RSF



FLOOR PLAN

SUITE 255

READY FOR OCCUPANCY | $\pm 2,807$ RSF





For additional information:

Kevin Smigiel
Vice President
602.550.9295
kevin.smigiel@transwestern.com

Kathleen Morgan
Managing Director
602.809.1048
kathleen.morgan@transwestern.com

Vince Femiano
Managing Director
602.954.7559
vince.femiano@transwestern.com

Andrew Olivet
Associate
602.370.2685
andrew.olivet@transwestern.com

TRANSWESTERN REAL ESTATE SERVICES

2501 East Camelback Road, Suite 1
Phoenix, Arizona 85016
T 602.956.5000 F 602.956.5333
transwestern.com

The information provided herein was obtained from sources believed reliable; however, Transwestern makes no guarantees, warranties or representations as to the completeness of accuracy thereof. The presentation of this property is submitted subject to errors, omissions, change of price or conditions, prior to sale or lease, or withdrawal without notice. Copyright © 2025 Transwestern.