



AVAILABLE FOR LEASE
510 W. Merrill Street
 Indianapolis, IN 46225



CENTRAL BUSINESS DISTRICT
5 MIN. TO I-70 ON/OFF RAMP



PROCESS / WAREHOUSE / ASSEMBLY

General Specifications

- Square footage:
 - > 23,800 SF total
 - > 21,300 SF fully heated, air conditioned and humidity-controlled
 - > 2,500 SF air conditioned office
- Parking: 30± autos
- Ceiling height: 20'
- Loading: 3 dock doors (8' x 8'), with levelers and storm seals; 1 drive-in (10' x 14')
- Zoning: I-4-U; broad spectrum (industrial) users



Todd T. Vannatta, SIOR
 Executive Director
 Direct +1 317 639 0455
 Mobile +1 317 752 7556
 todd.vannatta@cushwake.com

Kevin W. Archer
 Senior Director
 Direct +1 317 218 7217
 Mobile +1 317 809 4142
 kevin.archer@cushwake.com

One American Square, Suite 1800
 Indianapolis, IN 46282 | USA
 Main +1 317 634 6363
 Fax +1 317 639 0504
cushmanwakefield.com

AVAILABLE FOR LEASE

510 W. Merrill Street

Indianapolis, IN 46225



PROCESS / ASSEMBLY / WAREHOUSE

- Space for 30± autos/trucks
- Ceiling height: 20'
- 3 dock doors (8' x 8'), with levelers and storm seals
- 1 drive-in (10' x 14')
- Lighted exterior panel (12' x 3.5', facing east)
- Pole-mounted security lighting for all parking areas
- Square Footage:
 - > 23,800 SF total
 - > 21,300 SF fully heated, air conditioned & humidity-controlled
 - > 2,500 SF air conditioned office

Reception, Manufacturing/Processing and Warehouse

23,800 SF total space, including 2,500 SF office and display.





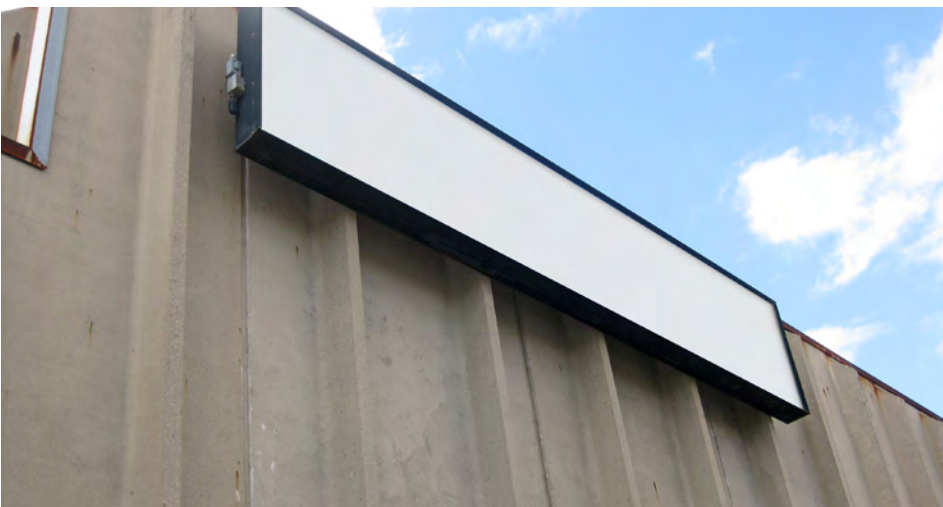
Warehouse

21,300 SF, 60' x 175' center bay.



Loading

3 dock doors (8' x 8'), with dock levelers and storm seals; 1 drive-in (10' x 14').



Signage—Three Sides

12' x 3.5' exterior panel faces Lucas Oil Stadium.

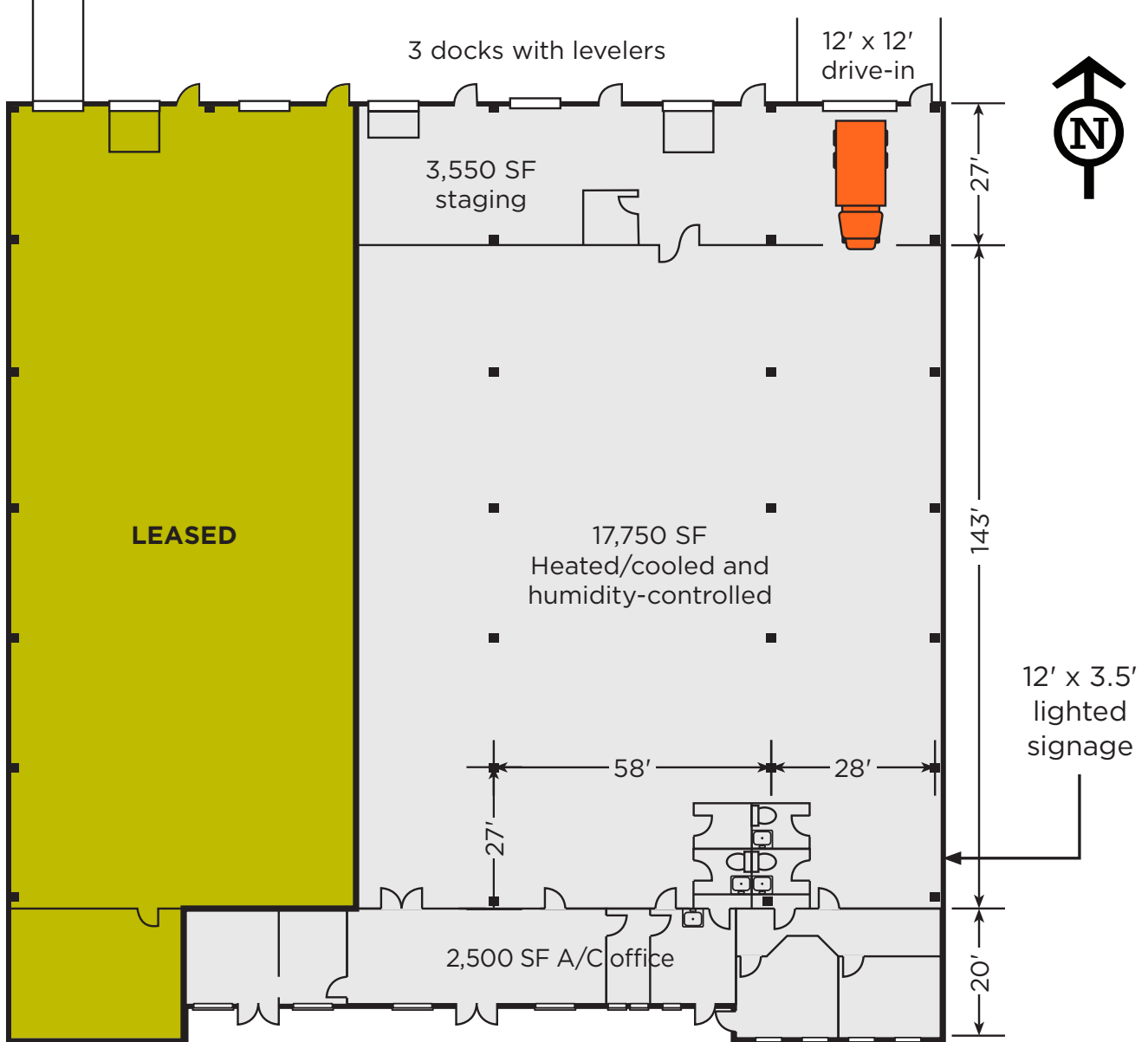


**CUSHMAN &
WAKEFIELD**

AVAILABLE FOR LEASE

510 W. Merrill Street

Indianapolis, IN 46225



Todd T. Vannatta, SIOR

Executive Director

Direct +1 317 639 0455

Mobile +1 317 752 7556

todd.vannatta@cushwake.com

Kevin W. Archer

Senior Director

Direct +1 317 218 7217

Mobile +1 317 809 4142

kevin.archer@cushwake.com

cushmanwakefield.com