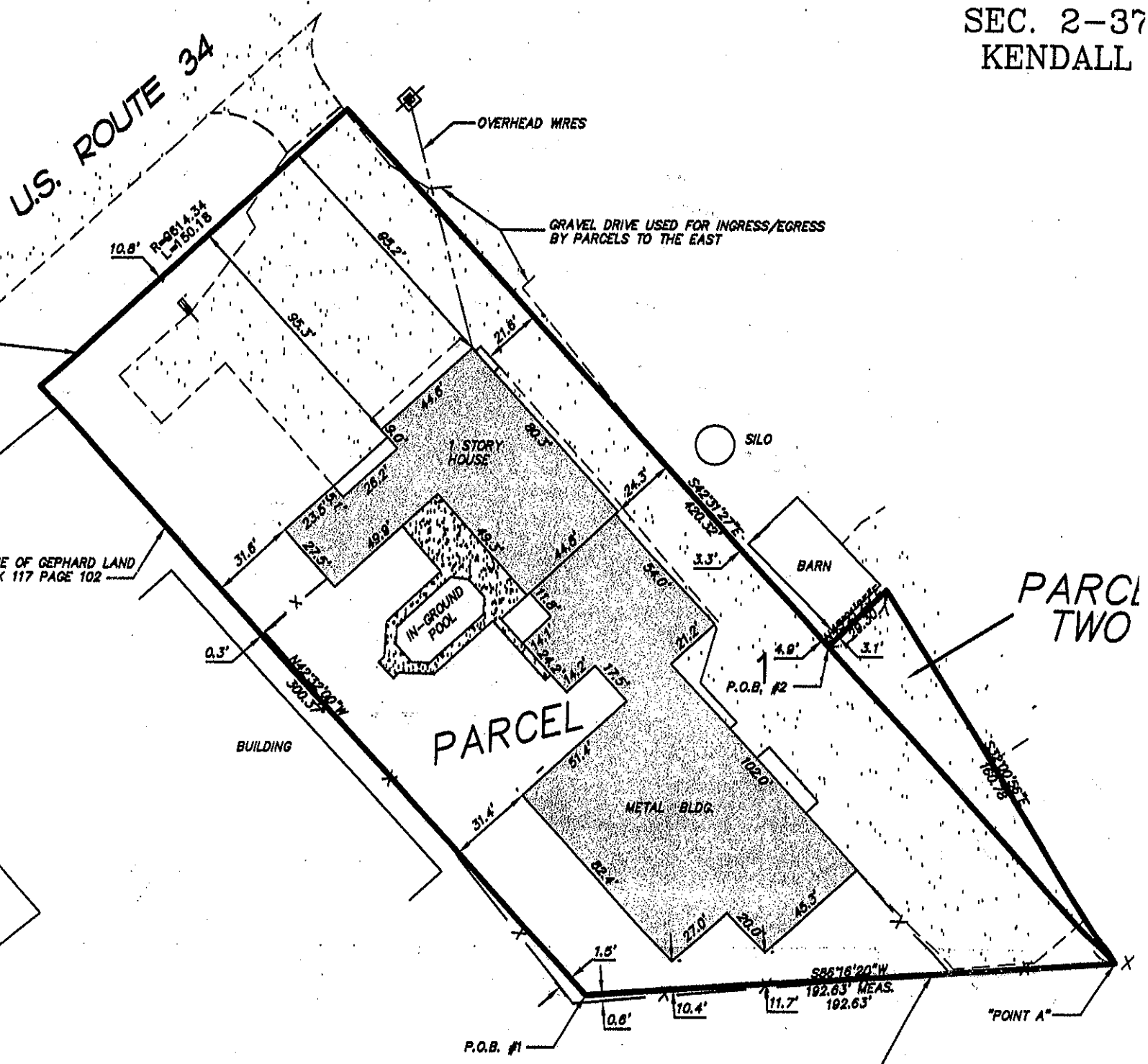


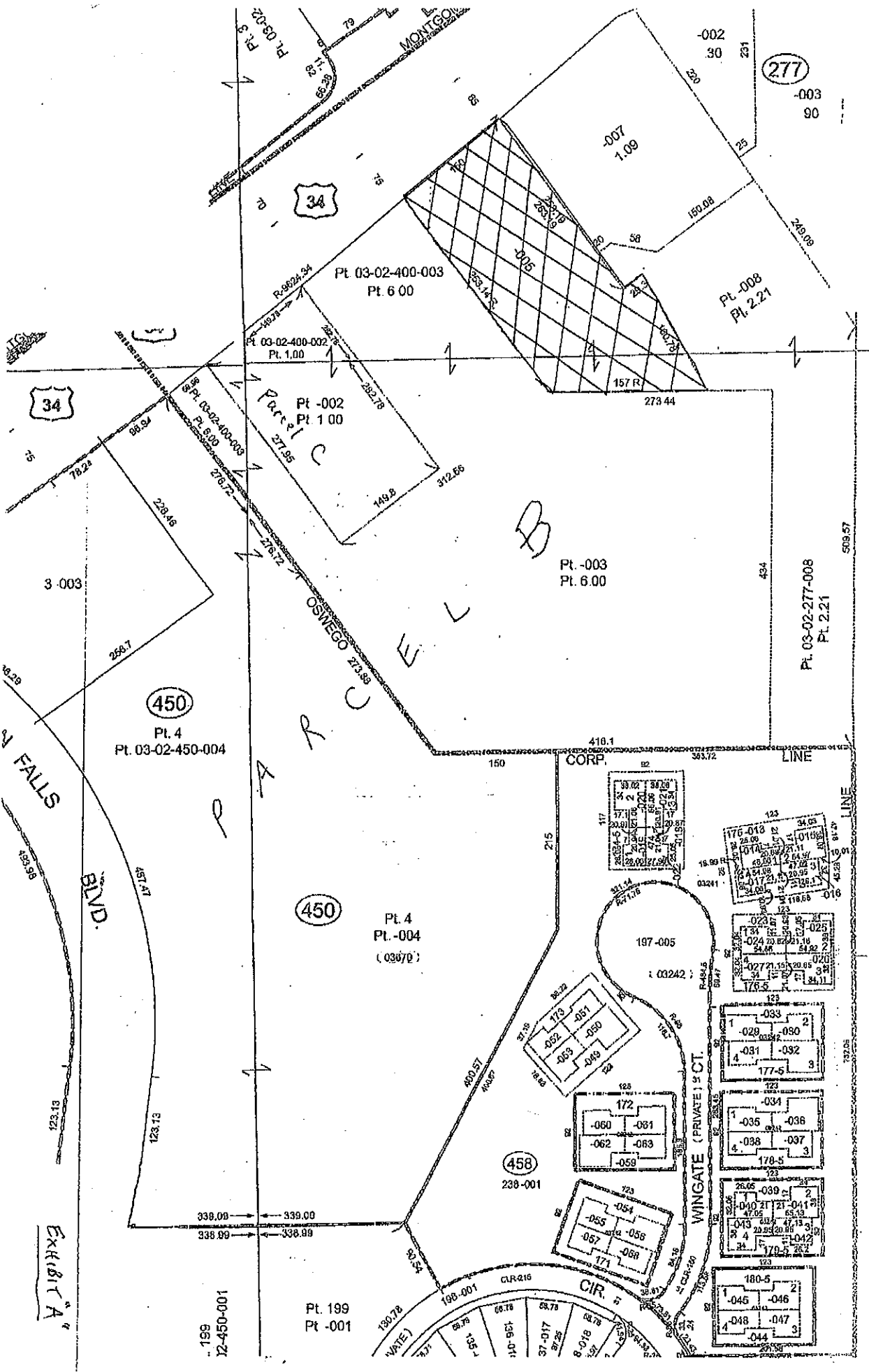
ERING CONSULTANTS, INC.
AL ENGINEERS AND SURVEYORS
 9 JOHN STREET
 ILLINOIS 60580
 7580 FAX: 630-559-7648
 E-MAIL: sec@smithengineering.com
 HUNTLEY YORKVILLE
NAL DESIGN FIRM # 184-000108

PLAT C

OF PART C
 SEC. 2-37
 KENDALL



MONUMENTED NORTHERLY LINE OF
 AMERICAN VAN LINES LAND PER
 DOCUMENT NUMBER 876519



(277)

(450)

(450)

(458)

Pt. 4
Pt. 03-02-450-004

Pt. 4
Pt. -004
(03670)

Pt. 199
Pt. -001

Pt. 03-02-400-003
Pt. 6.00

Pt. 03-02-400-002
Pt. 1.00

Pt. -003
Pt. 6.00

Pt. 03-02-277-008
Pt. 2.21

-199
72-450-001

Exhibit A

FALLS BLVD

PARCEL B

OSWEGO ST

WINGATE (PRIVATE) ST

CIR.

34

34

34

Exhibit A