

# LAKE MEAD COMMERCIAL CENTER

1180 E SUNSET RD | HENDERSON, NV 89011



## CLASS A MEDICAL/PROFESSIONAL OFFICE & PRESCHOOL

Q3 2025 GREY SHELL DELIVERY · CADENCE MASTER-PLANNED COMMUNITY

KAYLEE BORAM CHO, CCIM  
NV Lic.# BS.0144592  
Kaylee@KayleeLasVegasRealty.com  
702.728.1932

RENA AREE  
NV Lic.# S.0197997  
RenaAree@gmail.com  
702.530.8383

AAREON (ACE) SMITH-ALLEN  
NV Lic.# S.0202284  
Ace@EliteCapitalGroupRE.com  
702.401.2237

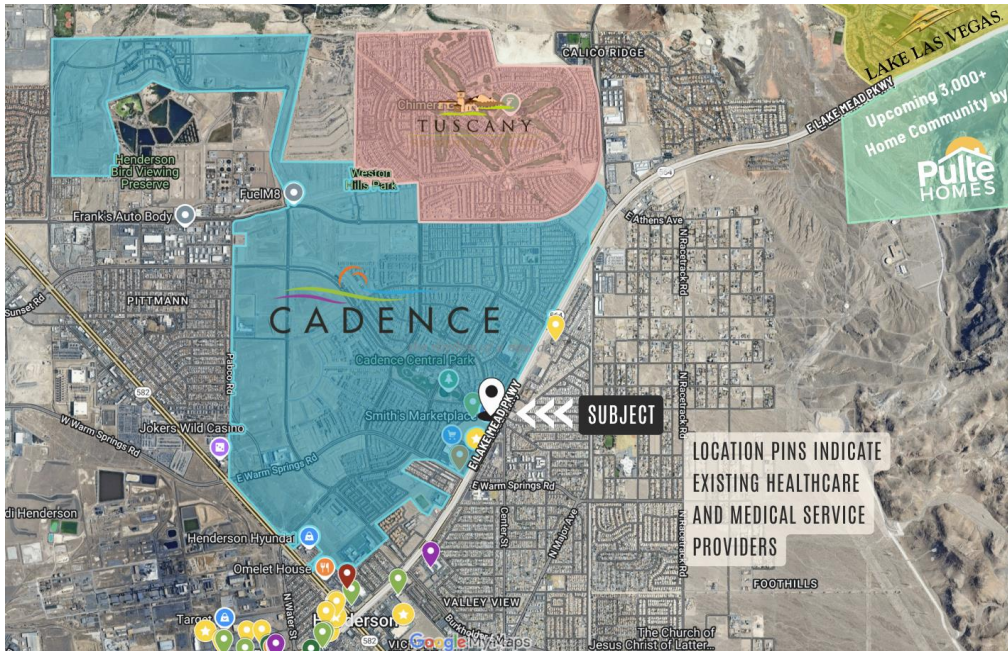
**kw** Keller Williams  
**COMMERCIAL**  
LAS VEGAS

**K**  
KAYLEE CHO & RENA AREE  
COMMERCIAL REAL ESTATE

# PROPERTY HIGHLIGHTS

KW Commercial is pleased to present the development of a Class A professional office building in the thriving Cadence Master-Planned Community in Henderson, NV. Located in the Lake Mead Commercial Center, just east of Cadence Village Center Phase I & II, the building is situated in close proximity to Tuscany, Lake Las Vegas, and the upcoming master-planned housing development of 3,000 homes, just south of Lake Las Vegas.

Cadence was ranked #3 Top-selling Master Planned Community in 2024. With there still being limited healthcare and professional services available to residents in the area, there is great opportunity for those looking to expand their practice or open a first location.



## MEDICAL/PROFESSIONAL OFFICE & PRESCHOOL

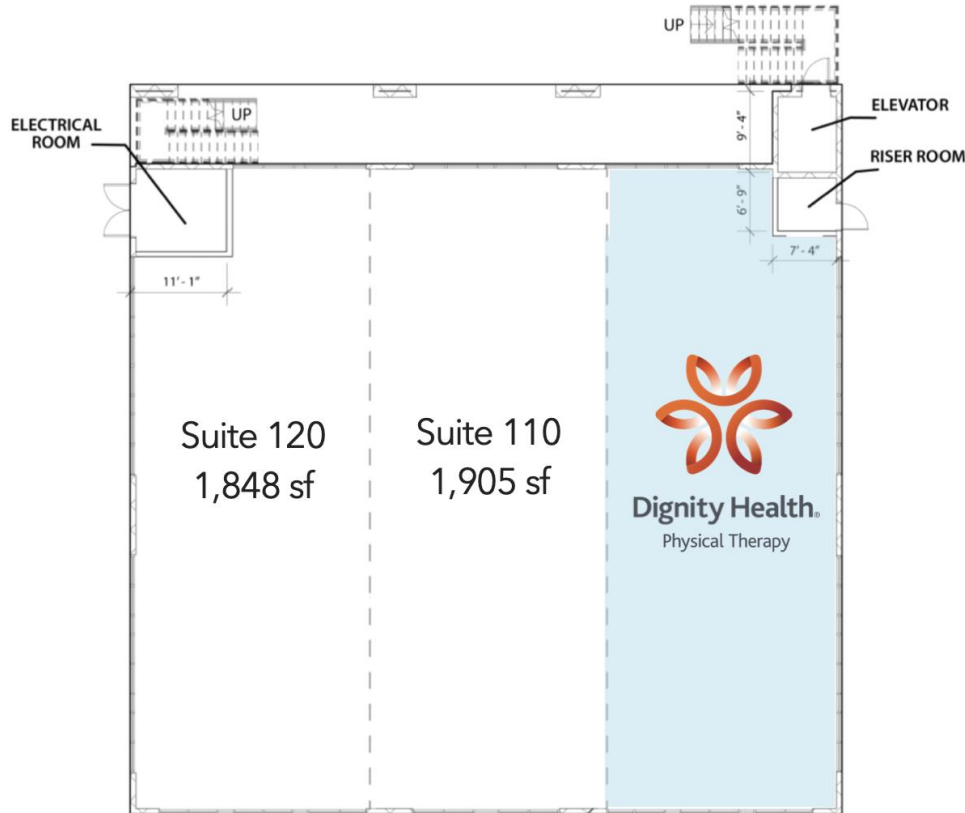
<b>BUILDING TYPE:</b>	Class A	
<b>PROPERTIES AT THE CENTER:</b>	Total	5
	Existing	2
	Q1 2025 delivery	2
	Planned	1
<b>SUBJECT APN:</b>	179-05-422-014	
<b>SUBJECT LAND AREA:</b>	1.28 AC	
<b>ZONING</b>	Planned Community (PC)	
<b>DELIVERY:</b>	Grey Shell	
<b>BUILDING SIZE:</b>	Office	11,573 sf
	Preschool + playground (Leased)	7,109 sf
<b>MIN. DEMISABLE:</b>	1,848 sf	
<b>MAX. REMAINING:</b>	1 <sup>st</sup> Floor - 5,661 sf 2 <sup>nd</sup> Floor - 5,912 sf	
<b>ASKING RENT:</b>	\$2.95 - \$3.25/sf/mo + NNN	
<b>NNN:</b>	\$0.50/sf/mo	

[ARTICLE: Top-Selling Master-Planned Communities of 2023](#)

[ARTICLE: Top-Selling Master-Planned Communities Mid-Year 2024](#)

# MEDICAL/PROFESSIONAL OFFICE

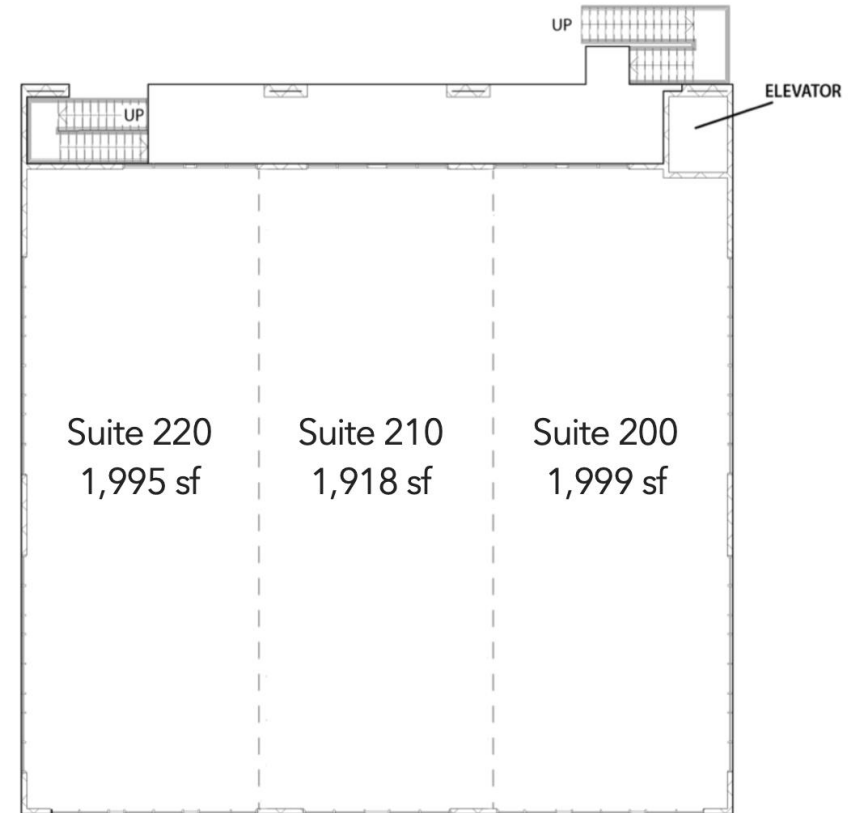
## OFFICE FLOOR PLAN & SIZE



### FIRST FLOOR

AVAILABLE SF: 3,753

\$3.25 PSF/mo + \$0.50 NNN

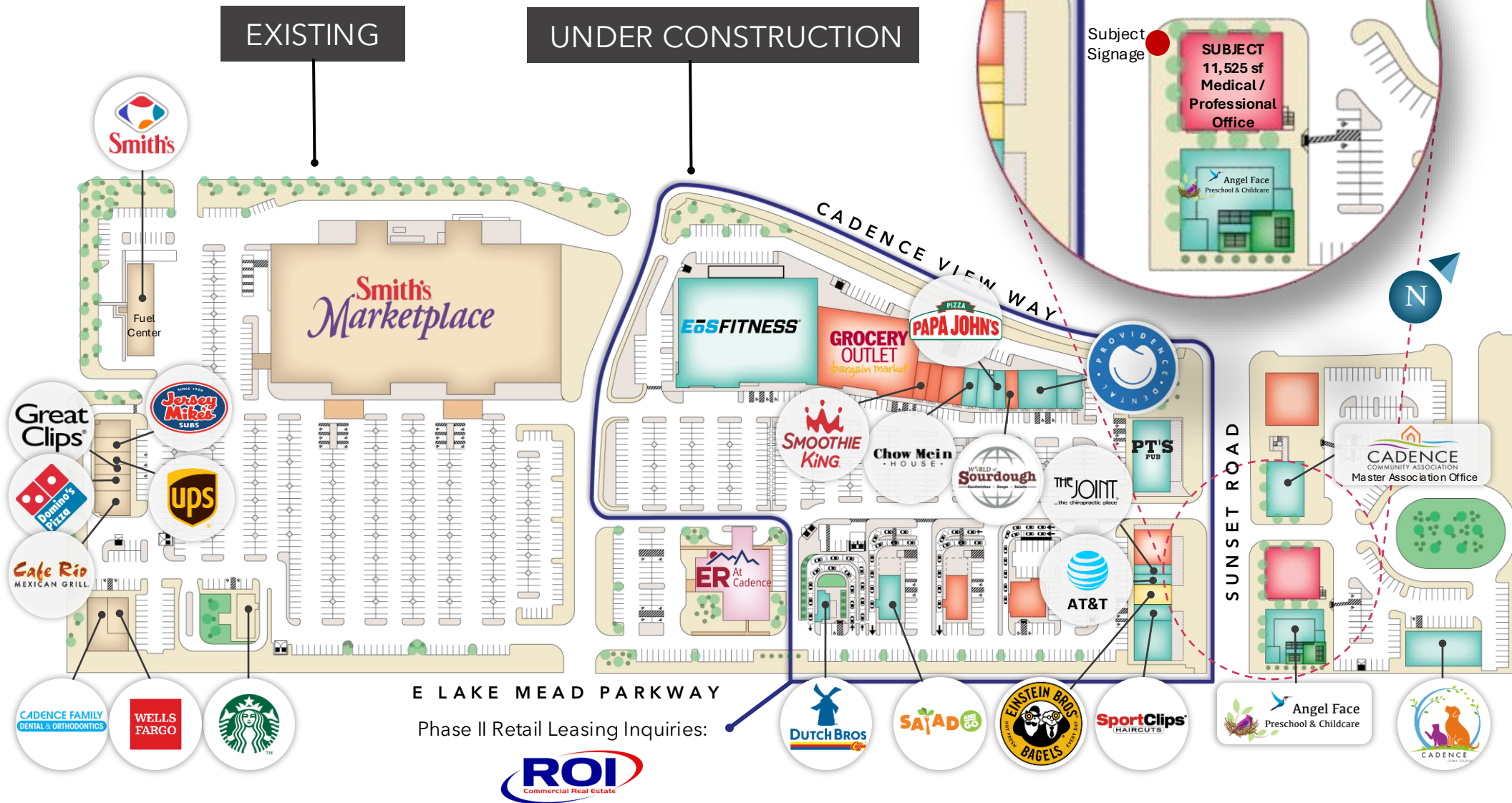


### SECOND FLOOR

AVAILABLE SF: 5,912

\$2.95 PSF/mo + \$0.50 NNN

# NEARBY AMENITIES



E LAKE MEAD PARKWAY

Phase II Retail Leasing Inquiries:



**Todd Boyer** NV Lic S.0024286

702.550.4923 | todd@roicre.com

**Robin Civish, CCIM** NV Lic BS.0037430

702.550.4977 | robin@roicre.com

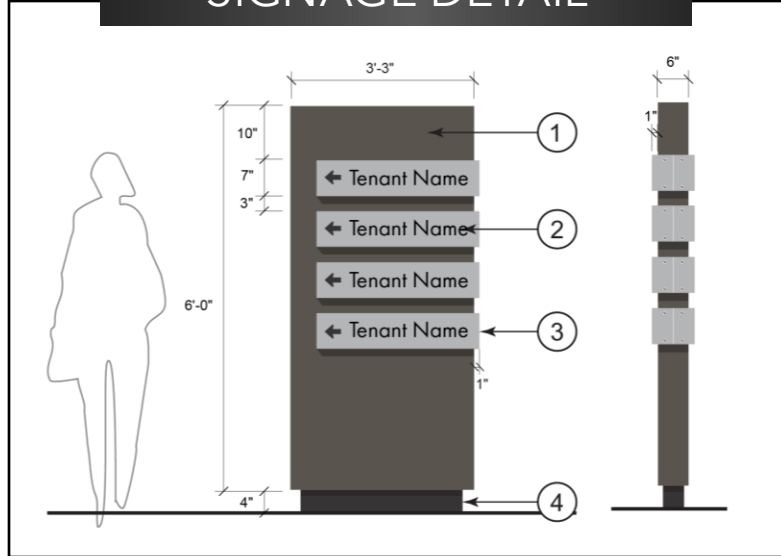
Not to Scale: For illustrative purposes only.

Last updated September 3, 2025

Lake Mead Commercial Center | 1180-1186 E Sunset Rd, Henderson, NV 89011

# ELEVATION & SIGNAGE

## SIGNAGE DETAIL



\*Stairway and railing design is subject to change to match the existing stairway within the center.

# SUBJECT PROPERTY MAP



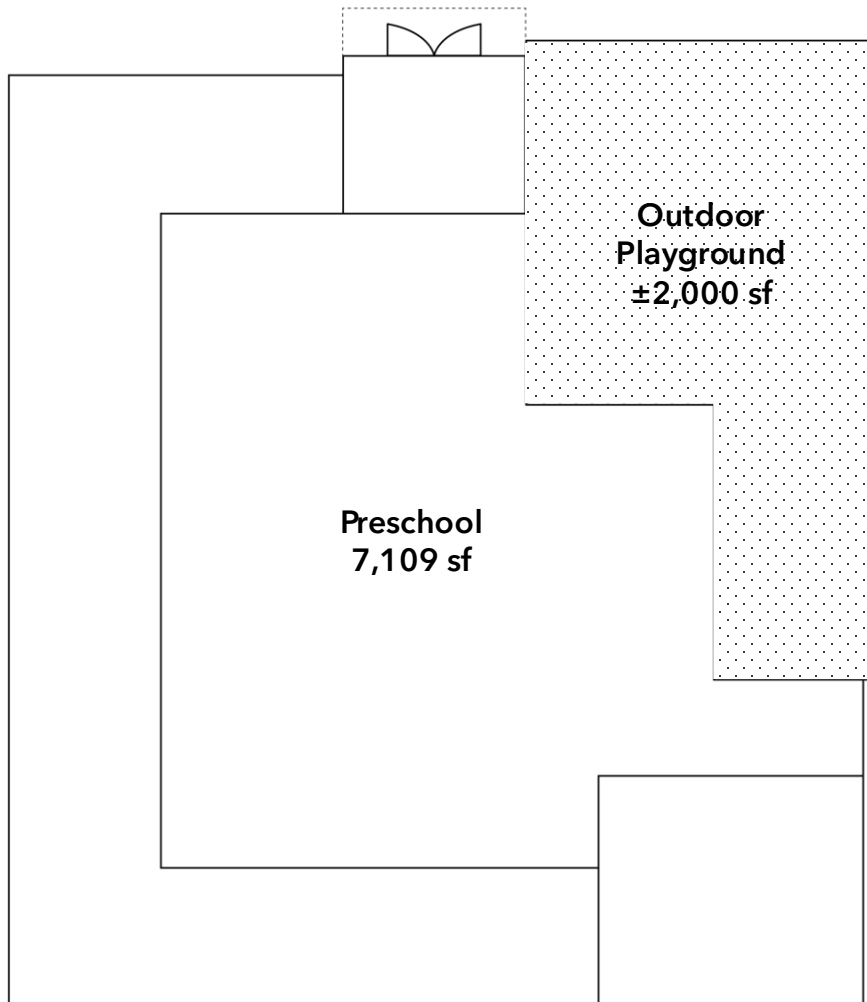


CO-TENANT (NOT A PART, UNDER CONTRACT)

Angel Face Preschool, an established, accredited, and reputable preschool and childcare will be opening their second location adjacent to available medical/professional office structure.

- Designed to accommodate 170 students
- Age group is 6 weeks to 5 years old
- State-of-the-Art learning and play facility
- On-site organic kitchen
- Opening Fall of 2025

[www.AngelFacePreschool.com](http://www.AngelFacePreschool.com)



FLOORPLAN

## AREA DEMOGRAPHICS



### POPULATION

1 Mile	3 Miles	5 Miles
18,214	67,193	177,325



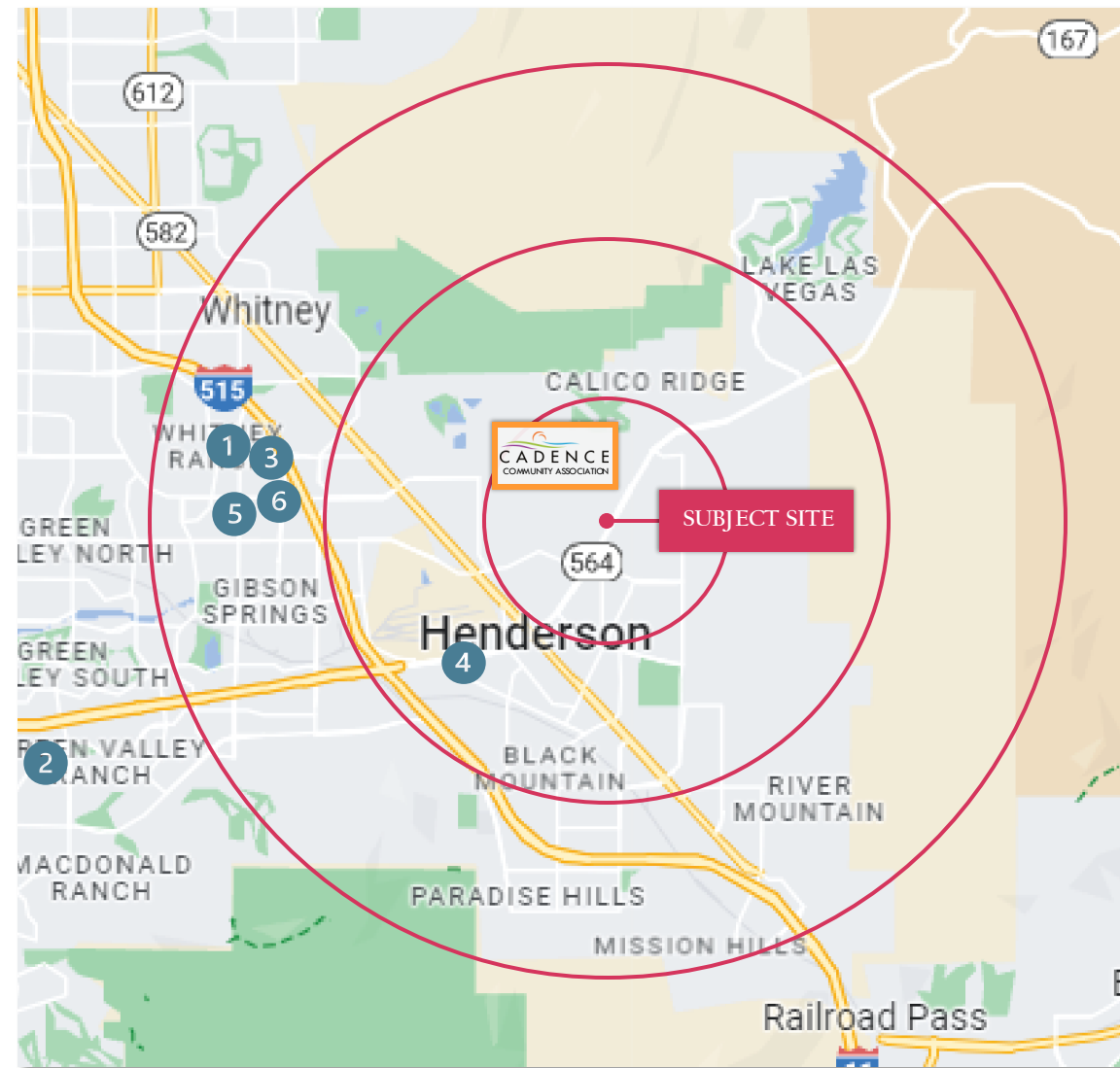
### FAMILY HOUSEHOLDS

1 Mile	3 Miles	5 Miles
6,786	25,906	68,669



### MEDIAN HOUSEHOLD INCOME

1 Mile	3 Miles	5 Miles
78,566	83,882	86,925



## AREA RETAIL

- 1 **GALLERIA MALL:** Macy's, Dick's Sporting Goods, Kohl's, Dillards
- 2 **THE DISTRICT AT GREEN VALLEY RANCH:** REI, Whole Foods, Anthropologie, Lululemon
- 3 **SUNMARK PLAZA:** Best Buy, Petco, Joann Fabrics, Sportsman's Warehouse


- 4 **LAKE MEAD CROSSING:** Target, Ross, PetSmart, Staples, Big Lots, Ross
- 5 **STEPHANIE STREET:** Total Wine, Barnes & Noble, DSW, Nordstrom RACK, Sprouts, Home Goods
- 6 **EASTGATE POWER CENTER:** WalMart Supercenter, In N Out Burger, Party City




One of the most exciting prospects in Henderson, NV is the Cadence Master Planned Community of homes and businesses. Conveniently located near many thriving communities that are only set for year-over-year growth as more businesses and families flock to the city of Henderson.

ARTICLE: Cadence Ranked #3 Top-selling Master Planned Communities of 2024

THE #3 TOP-SELLING MASTER-PLANNED COMMUNITY OF 2024

  
**PLANNED HOMES**  
**12,250**

  
**SCHOOLS IN COMMUNITY**  
**6**

  
**PARKS & TRAILS**  
**450 AC**

  
**TOP SELLING COMMUNITY**  
**#4**

CADENCE BY THE NUMBERS

<b>BUILDERS</b>	10	<b># OF PARKS</b>	9 including a 50-acre Central Park
<b>HOMES</b>		<b># OF SCHOOLS</b>	6 including Angel Face Preschool & Childcare
<i>Planned</i>	12,250		
<i>Built</i>	0		
	5,663		
<b>TOTAL ACRES</b>	2,200	<b>CADENCE VILLAGE CENTER</b>	Phase I - Now Open Phase II - Under Construction

 <b>RCLCO   2024 SALES TOP 50</b> <b>MASTER-PLANNED COMMUNITIES</b>						
RANK	MPC	CITY, STATE	DEVELOPER	YTD SALES		
				2024	2023	%Δ
1	The Villages	The Villages, Florida	The Villages	3,208	3,029	6%
2	Lakewood Ranch	Sarasota, Florida	Schroeder-Manatee Ranch, Inc.	2,210	2,257	-2%
3	Cadence	Henderson, Nevada	The LandWell Company	1,386	964	44%
4	Sunterra	Katy, Texas	Land Tejas/Starwood Land	1,325	1,293	2%
5	Summerlin	Las Vegas, Nevada	Howard Hughes Corporation	1,055	1,090	-3%

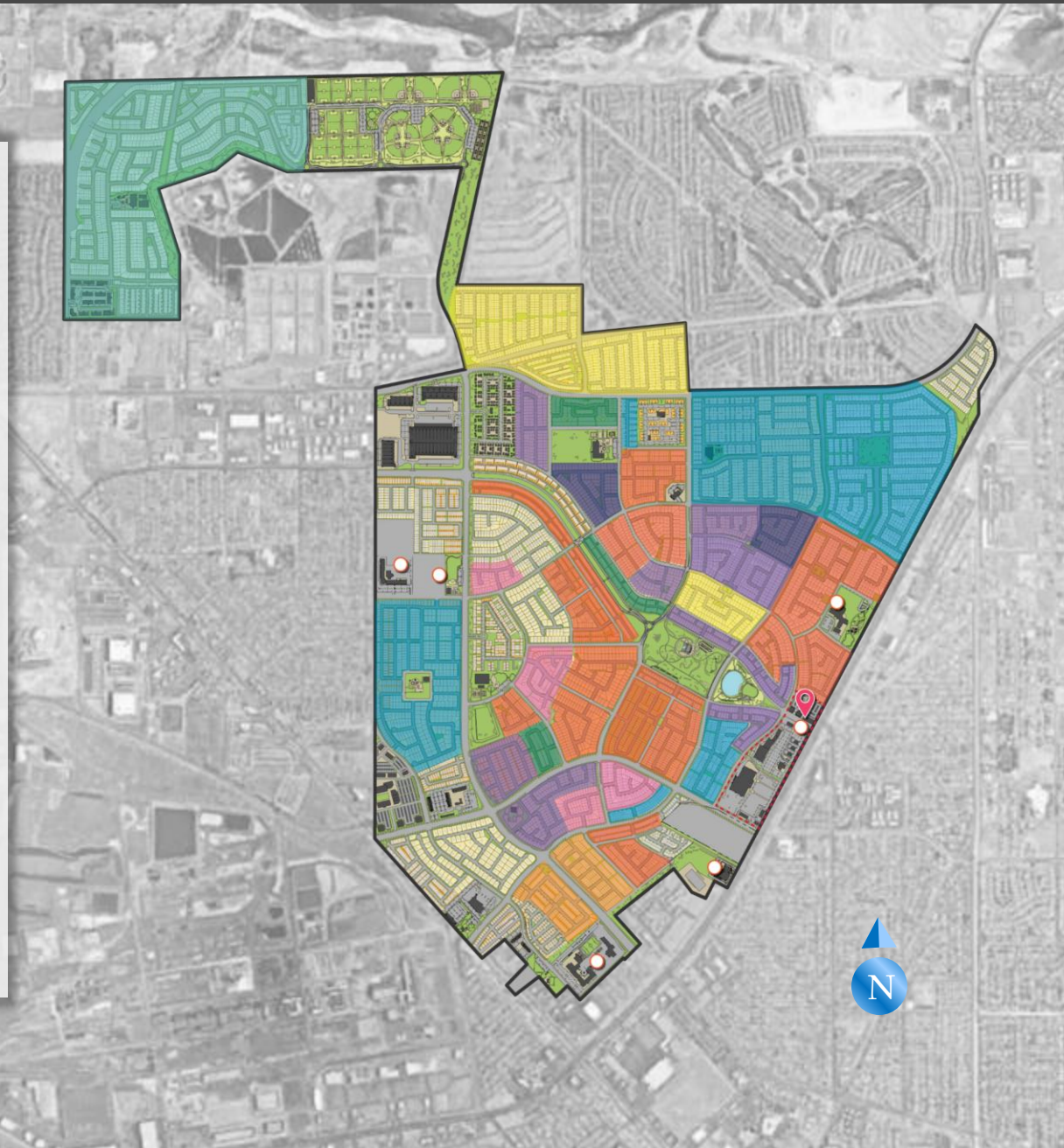
Image source: rclco.com, September 17,, 2025



# CADENCE MASTER PLAN & HOME BUILDERS

At completion, Cadence will be home to 12,250 single family homes across 2,200 acres. Amenities include parks, trails, retail and dining, dog parks, and a total of 6 schools within the Master Planned Community.

[www.CadenceNV.com](http://www.CadenceNV.com)



# HENDERSON<sup>TM</sup>

INCORPORATED



1953

TOTAL SQ MILES



118.5

POPULATION



345,496

HOUSEHOLDS



145,612

MEDIAN INCOME



\$85,311

NEW HOME TO  
OPPORTUNITY



**CITY OF HENDERSON**  
has purchased the 35-acre former Fiesta Casino land with plans to build a massive indoor sports and entertainment facility. Delivery TBD.



**LEVI STRAUSS & CO**  
opened their distribution facility in 1998 and became LEED certified in 2019. The first facility to fulfill ecommerce, retail, and wholesale channels.



**GOOGLE**  
made Henderson, NV home to their first data center outside of the San Francisco Bay Area in 2019.

Forecasted to bring in over \$94M in city revenues of the next 20 years and investing \$175K each in 5 local non-profits.



**AMAZON**  
The third Nevada fulfillment center satisfied the need for "a dedicated workforce who will raise the bar on being customer obsessed". Amazon has created 1,000 jobs with above-market wages, excellent benefits, and tuition assistance in their 600K square foot facility.



**HAAS AUTOMATION**  
World leader in computerized numerical controls manufacturing with \$1.8B in annual sales, 1,400 jobs and CSN partnership.



**LAS VEGAS RAIDERS**  
Home to HQ and the Healthcare Performance Center. 30 fully built out acres with 25 acres open for development. Football at it's finest.



**KROGER DISTRIBUTION**  
Location, location, location! Nevada's first distribution center gives Kroger brand access to 61M people within a day's drive.

# CLARK COUNTY MAP



## HARRY REID INTERNATIONAL AIRPORT

Ranked 12<sup>th</sup> busiest airport in the world in 2023 by Airport Council International (ACI), Harry Reid Airport has ushered in 57.6M people. An 11M increase from 2022.



## THE LAS VEGAS STRIP

Ranked 12<sup>th</sup> busiest airport in the world in 2023 by Airport Council International (ACI), Harry Reid Airport has ushered in 57.6M people. An 11M increase from 2022.

## HOOVER DAM

Where history meets high-functionality. Built in the Great Depression, this civil engineering wonder of the world brings approximately 7M visitors each year.



## WATER STREET DISTRICT

Eat, drink, shop, skate, enjoy and repeat! Water Street has it all. Water Street is also host to cultural, seasonal, and annual events for the whole family.

## LAKE MEAD RECREATION AREA

Favorite to locals and visitors alike. The Lake Mead Recreation Area offers swimming, boating, hiking, kayaking, campaign, and fishing. The largest recreation area in the US!



## LAKE LAS VEGAS

Lake Las Vegas features a gorgeous Italian-style village with lake front resorts, a golf course, and dining. Relax for a day or relax for a stay.

# DISCLAIMER

The information contained in this Offering Memorandum is proprietary and strictly confidential. It is intended to be reviewed only by the party receiving it from Kaylee Cho Commercial & Development Keller Williams Las Vegas Realty and should not be made available to any other person or entity without written consent. This Offering Memorandum has been prepared to provide summary, unverified information to prospective purchasers and/or lessors, and to establish only a preliminary level of interest in the subject property. The information contained herein is not a substitute for a thorough due diligence investigation, and makes no warranty or representation with respect to the income or expenses for the subject property, the future projected financial performance of the property, the size and square footage of the property and improvements, the presence or absence of contaminating substances, PCB's or asbestos, the compliance with State and Federal regulations, the physical condition of the improvements thereon, or the financial condition or business prospects of any tenant, or any tenant's plans or intentions to continue its occupancy of the subject property. The information contained in this Offering Memorandum has been obtained from sources we believe to be reliable; however, Kaylee Cho Commercial & Development Keller Williams Las Vegas Realty has not verified, and will not verify, any of the information contained herein, nor has Kaylee Cho Commercial & Development Keller Williams Las Vegas Realty conducted any investigation regarding these matters and makes no warranty or representation whatsoever regarding the accuracy or completeness of the information provided. All potential buyers and/or lessors must take appropriate measures to verify all of the information set forth herein. By receipt of this Memorandum, you agree that this Memorandum and its contents are of confidential nature, that you will hold and treat it in the strictest confidence and that you will not disclose its contents in any manner detrimental to the interest of the Owner. You also agree that by accepting this Memorandum you agree to release Kaylee Cho Commercial & Development Keller Williams Las Vegas Realty and it harmless from any kind of claim, cost, expense, or liability arising out of your investigation and/or purchase and/or lease of this property.