

±476 ACRES

±476 Acres

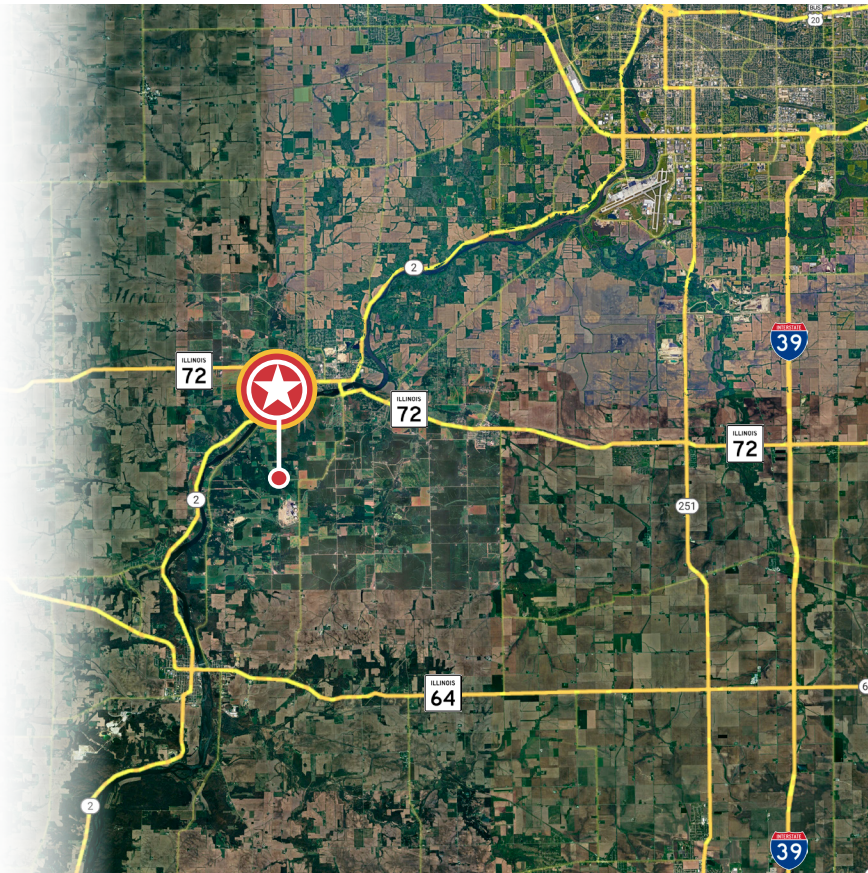
Available

Byron Data Center Development Opportunity

Byron, Illinois 61010

PROPERTY HIGHLIGHTS

- ±476 acres
- Proximity to:
 - Power infrastructure & connectivity
 - Constellation Byron Nuclear plant
 - Water availability
- Ogle County, Unincorporated
- Sale Price: Subject To Offer



Contact

Kelly Disser

+1 630 317 0721

kdisser@hiffman.com

Michael J Freitag

+1 630 693 0652

mfreitag@hiffman.com

TJ Feeney

+1 630 693 0680

tfeeney@hiffman.com

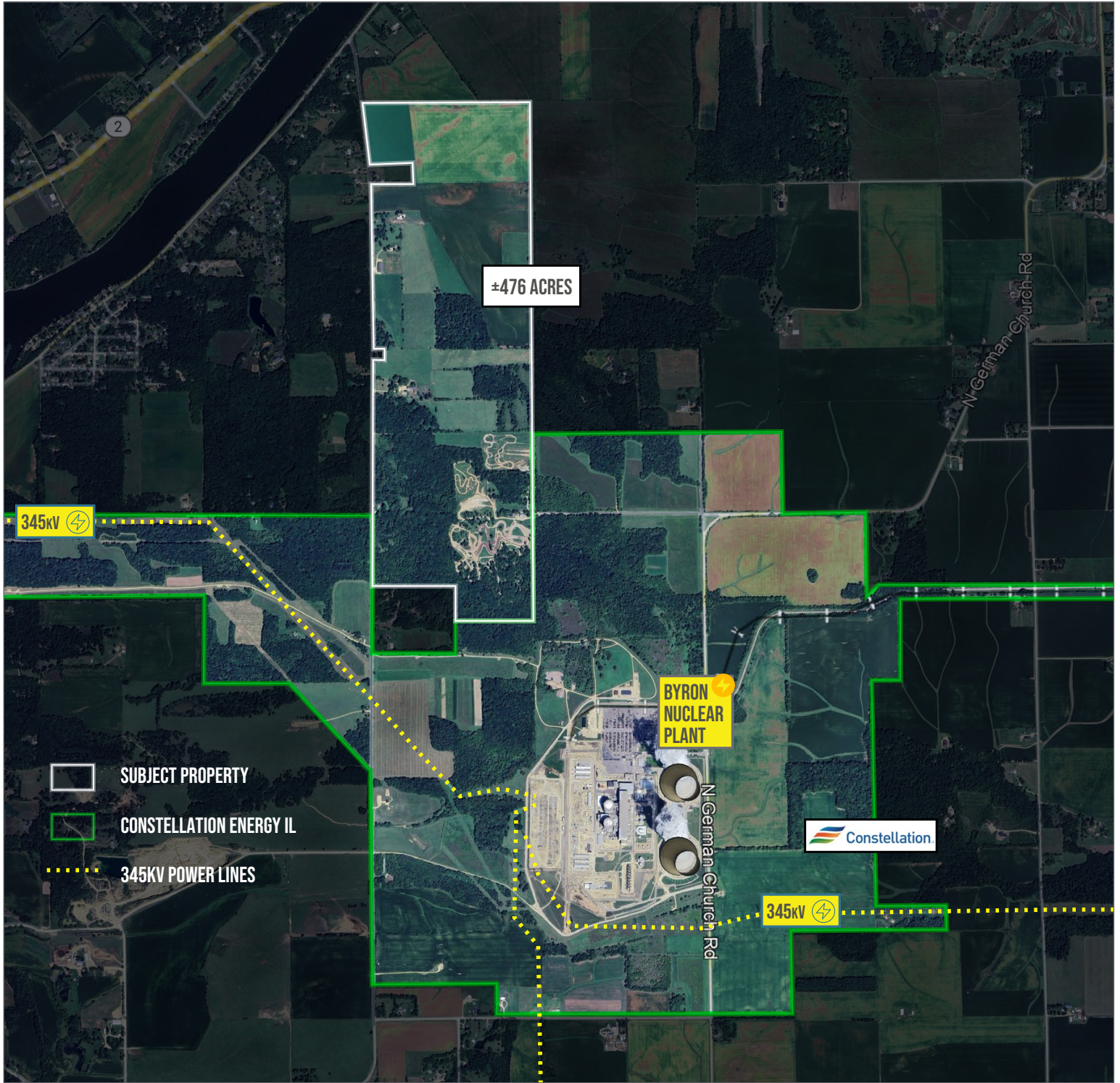
NAI Hiffman
Commercial Real Estate Services, Worldwide

One Oakbrook Terrace
Suite 400

Oakbrook Terrace, Illinois 60181
+1 630 932 1234

hiffman.com

NO WARRANTY OR REPRESENTATION, EXPRESS OR IMPLIED, IS MADE AS TO THE ACCURACY OF THE INFORMATION CONTAINED HEREIN, AND THE SAME IS SUBMITTED SUBJECT TO ERRORS, OMISSIONS, CHANGE OF PRICE, RENTAL OR OTHER CONDITIONS, PRIOR SALE, LEASE OR FINANCING, OR WITHDRAWAL WITHOUT NOTICE, AND OF ANY SPECIAL LISTING CONDITIONS IMPOSED BY OUR PRINCIPALS NO WARRANTIES OR REPRESENTATIONS ARE MADE AS TO THE CONDITION OF THE PROPERTY OR ANY HAZARDS CONTAINED THEREIN ARE ANY TO BE IMPLIED.



Contact

Kelly Disser

+1 630 317 0721

kdisser@hiffman.com

Michael J Freitag

+1 630 693 0652

mfreitag@hiffman.com

TJ Feeney

+1 630 693 0680

tfeeney@hiffman.com



One Oakbrook Terrace

Suite 400

Oakbrook Terrace, Illinois 60181

+1 630 932 1234

hiffman.com

NO WARRANTY OR REPRESENTATION, EXPRESS OR IMPLIED, IS MADE AS TO THE ACCURACY OF THE INFORMATION CONTAINED HEREIN, AND THE SAME IS SUBMITTED SUBJECT TO ERRORS, OMISSIONS, CHANGE OF PRICE, RENTAL OR OTHER CONDITIONS, PRIOR SALE, LEASE OR FINANCING, OR WITHDRAWAL WITHOUT NOTICE, AND OF ANY SPECIAL LISTING CONDITIONS IMPOSED BY OUR PRINCIPALS NO WARRANTIES OR REPRESENTATIONS ARE MADE AS TO THE CONDITION OF THE PROPERTY OR ANY HAZARDS CONTAINED THEREIN ARE ANY TO BE IMPLIED.