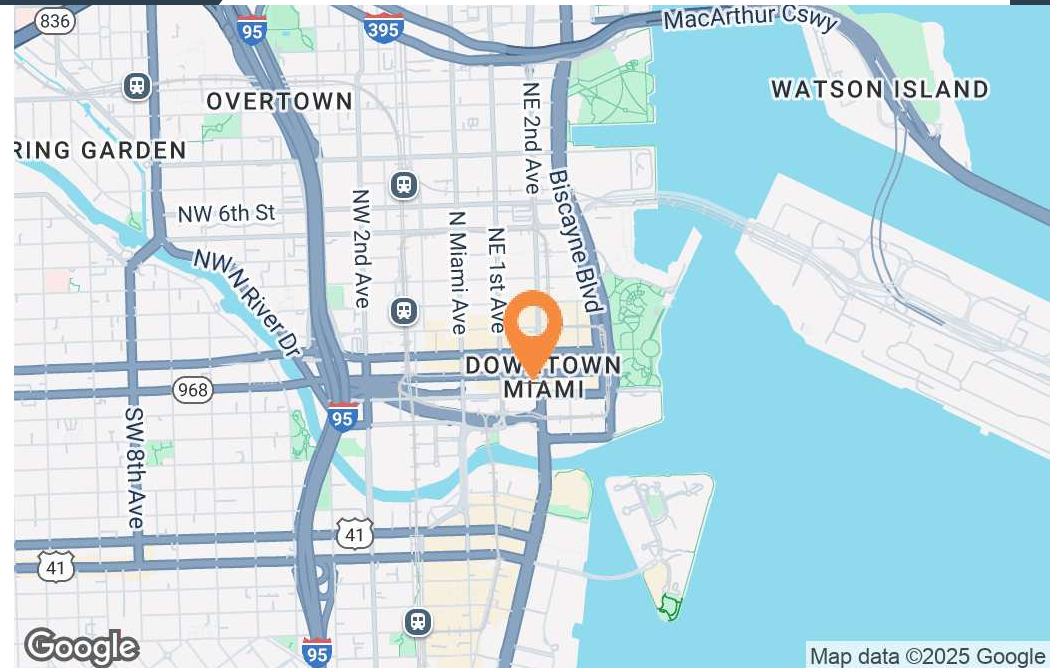


FOR LEASE/SALE 150 SE 2ND AVE

CHASE BANK BUILDING | UNIT 706







### + AVAILABLE SF

1,735 SF

### + LEASE TYPE

MG

### + SALE PRICE

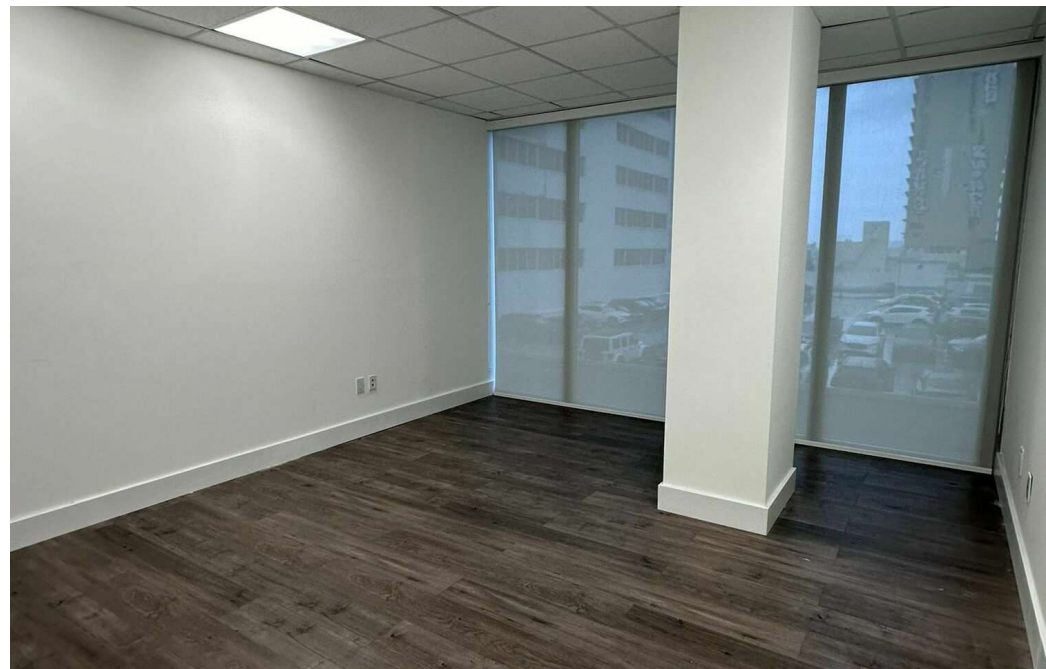
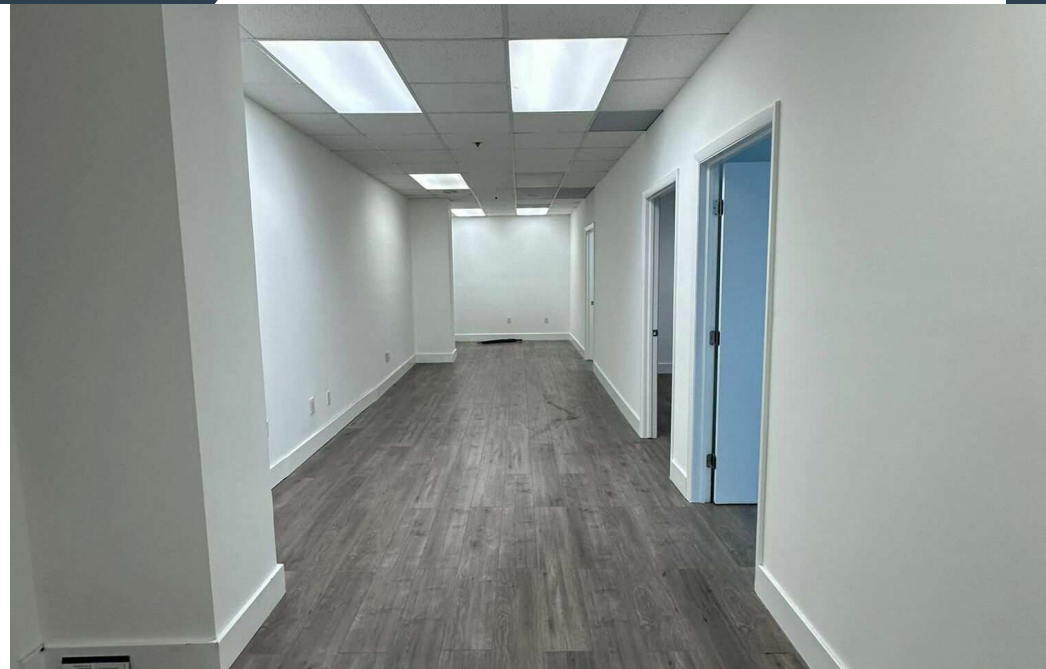
Contact Broker

### PROPERTY OVERVIEW

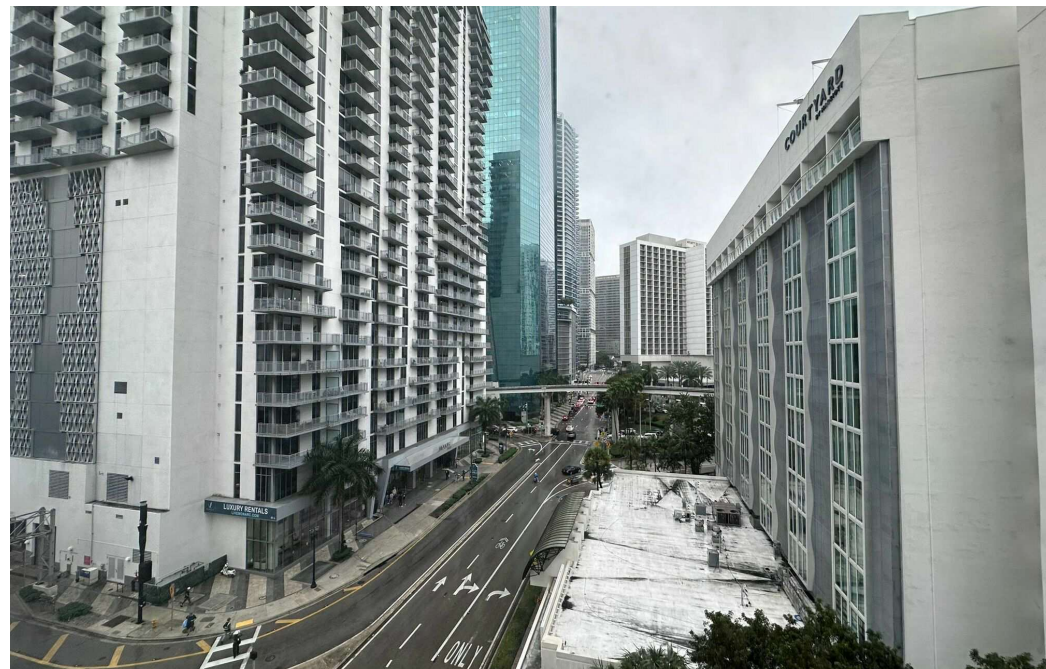
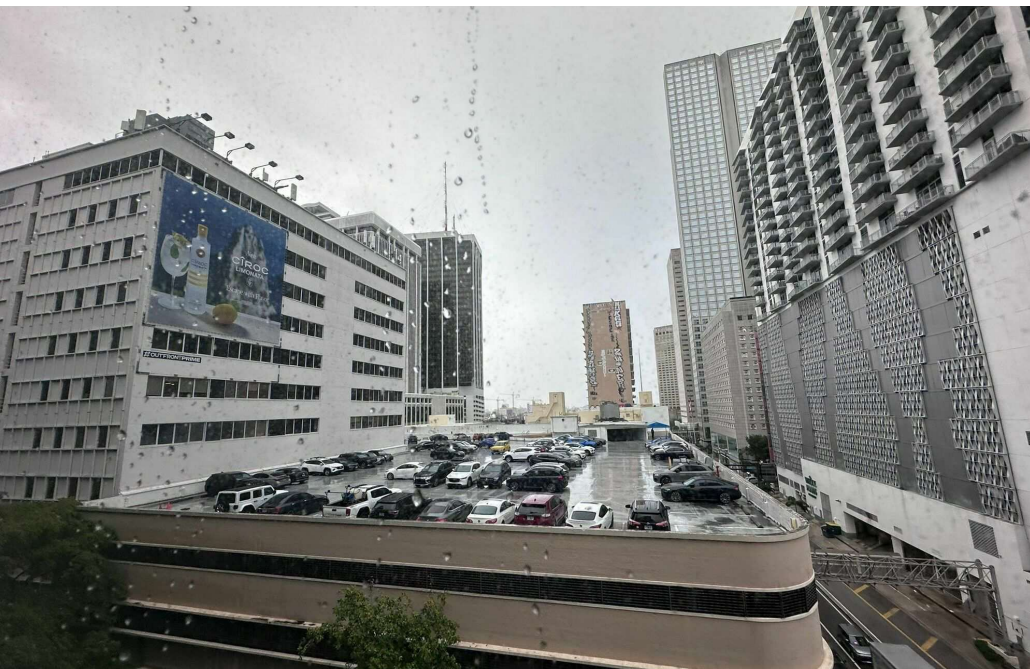
Nestled in the heart of vibrant Downtown Miami, this prime property offers a strategic location next to the iconic Miami Tower. With modern amenities and a contemporary design, this space provides the ideal setting for your business to thrive. Experience urban sophistication and unparalleled access to the city's dynamic business scene at this prestigious address.

### PROPERTY HIGHLIGHTS

- - Unit 706 available for sale or lease
- - Unit can be divided and leased as 2 separate units
- - Spectacular corner office views of the city
- - Prime location in vibrant Downtown Miami
- - Spacious and versatile floor plans
- - Seamless access to transportation and major thoroughfares
- - Proximity to a diverse range of dining and entertainment options
- - Ample parking and convenient access for tenants and visitors







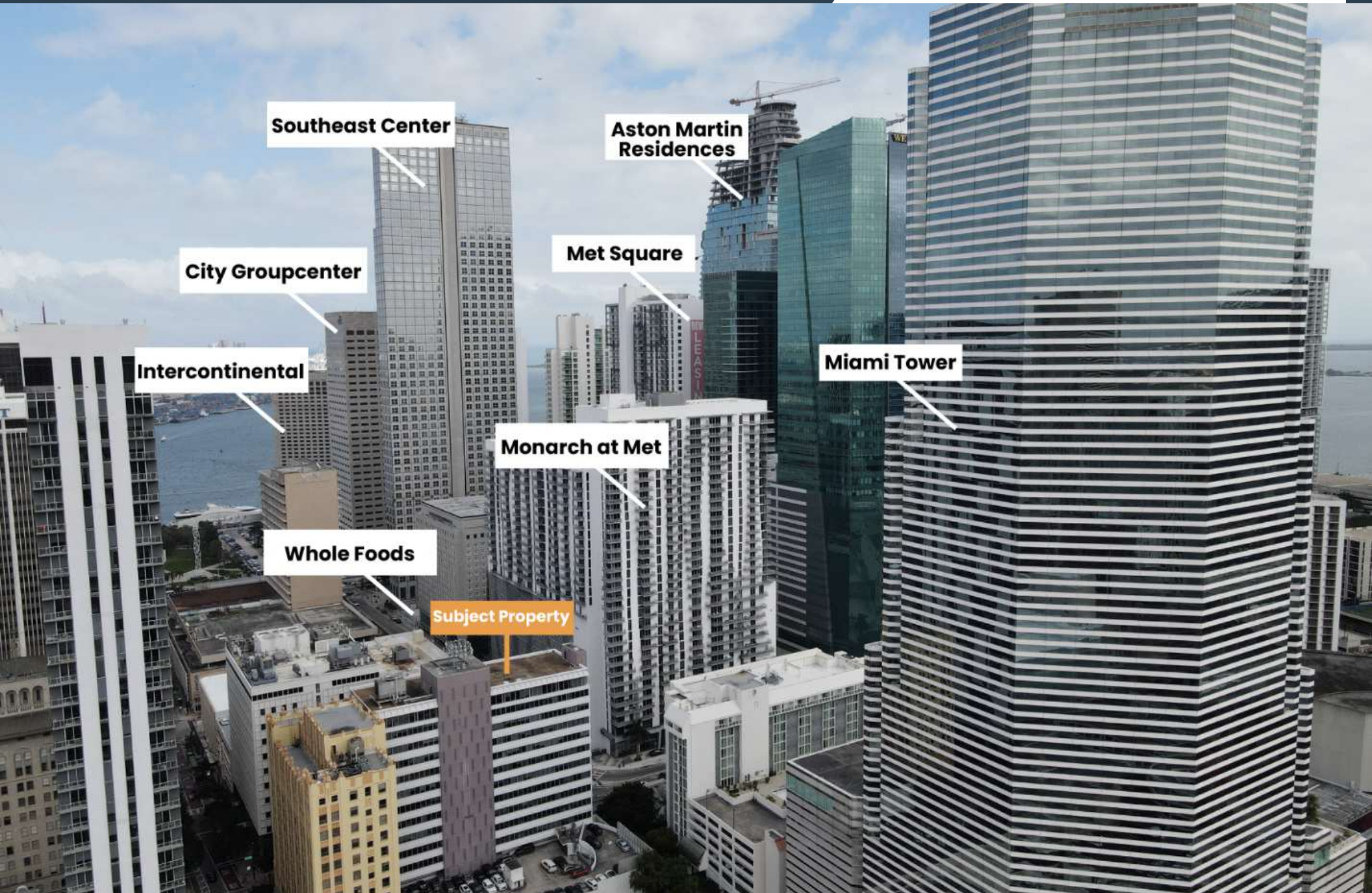


7TH LEVEL FLOOR PLAN









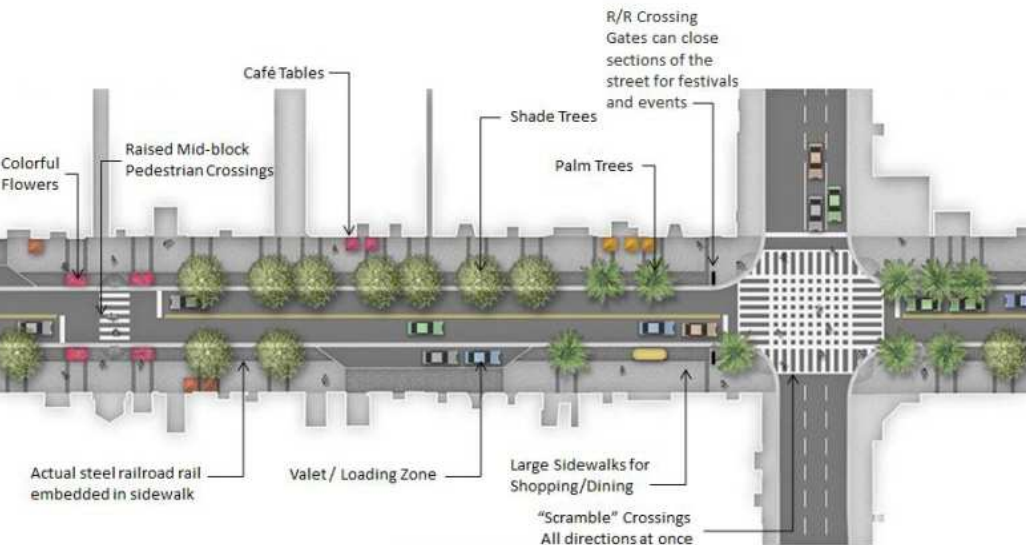


## FLAGLER STREET REVITALIZATION

Flagler Street is the original Main Street, a promenade stretching from Bay to River. When Flagler Street and Miami Ave intersect it creates the four quadrants of city's grid and could not get anymore Main & Main St. The fully funded 30 million revitalization project entails a near-total redesign and reconstruction of the street from Biscayne Boulevard to the Miami-Dade County Courthouse. On-street parking will be eliminated, replacing it with valet stations, extending and level sidewalks to allow ample room for pedestrians, cafe tables, bike racks and benches. Oak trees will be planted down the entire street, while upgrading and burying the electric and sewage. Flagler Street will return to its days of glory, rivaling any Miami pedestrian mall and ultimately competing with the Worth Avenues and Rodeo Drives of the world.



### Design | Concept | Plan



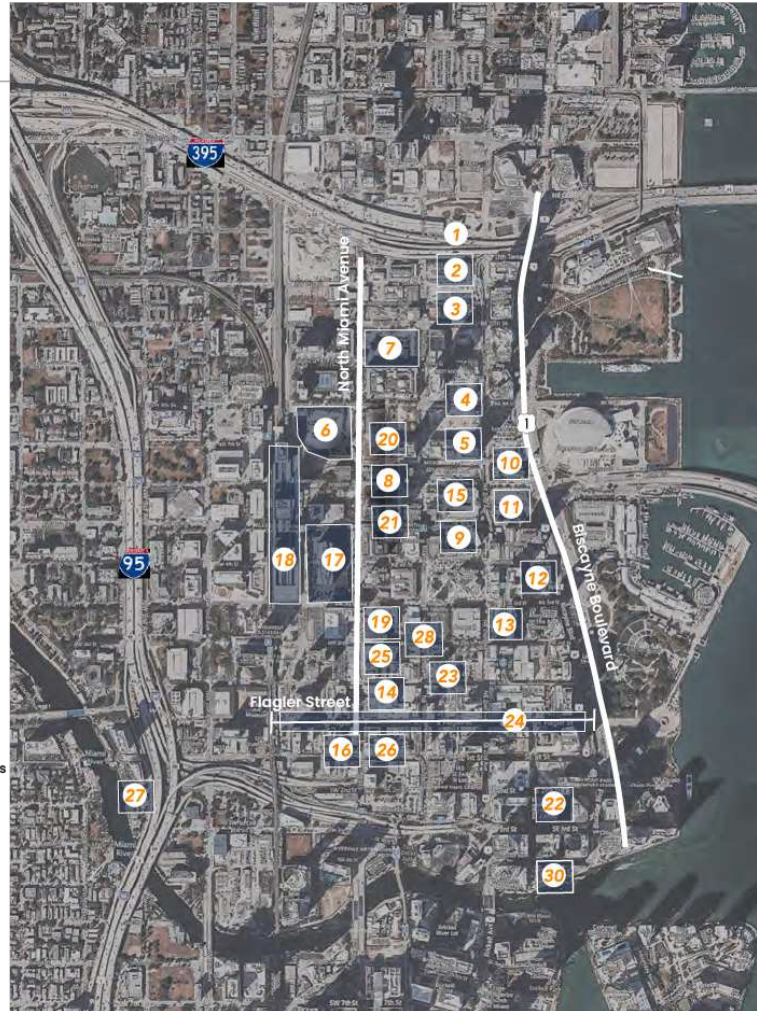






## Nearby Developments

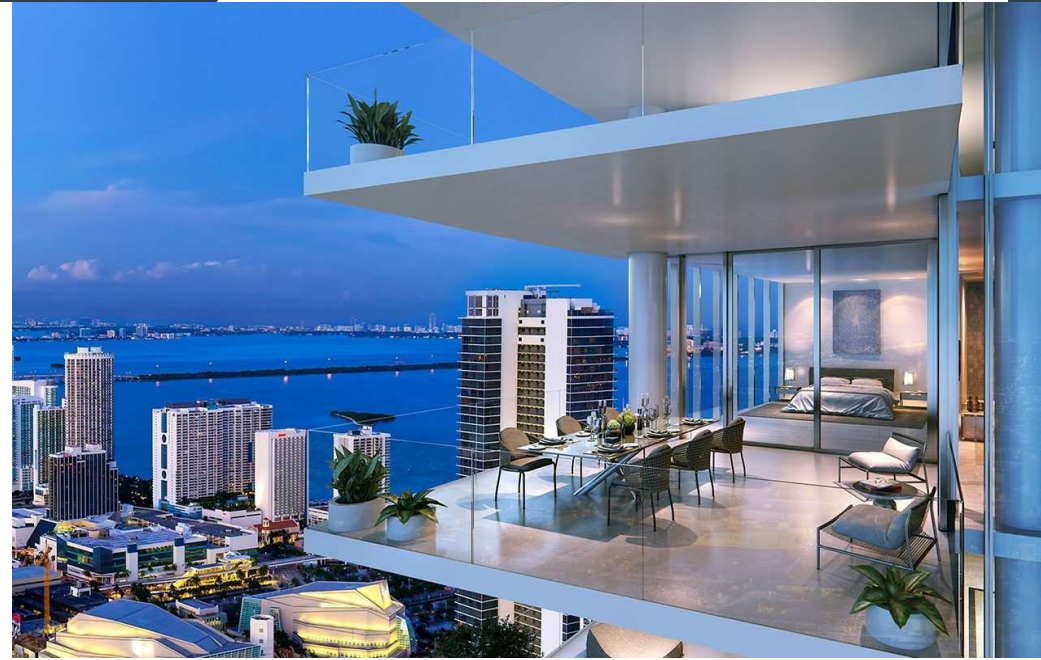
- |  |  |
|--|--|
| 1. Underdeck Miami   | 16. Lions Group NYC<br>675 units   |
| 2. Elleven Hotel<br>Residences/ Beyond<br>461 units   375 Hotel keys               | 17. US District Courthouse   |
| 3. Naftali Group<br>Two Supertall Towers 1.3<br>million total sf of<br>development | 18. Miami Central Station<br>816 units   130,000 sf of retail                        |
| 4. CitizenM at MWC<br>252 Hotel keys   | 19. The District<br>640 units  |
| 5. Bezel at MWC<br>434 units   | 20. The Crosby at MWC<br>450 units   |
| 6. Witkoff and Monroe<br>Capital<br>2,200 units                                    | 21. Downtown 5 <sup>th</sup><br>1,042 units  |
| 7. Legacy at MWC<br>310 condos   210 hotel keys                                    | 22. Monarc at Met<br>Apartments<br>462 units   |
| 8. Okan tower<br>399 units   | 23. Diamond District   |
| 9. Related Group   Merrimac<br>Ventures<br>450 units                               | 24. Flagler Street Streetscape   |
| 10. Natlivo Miami<br>412 units   | 25. Metro Mall Jewelry Center  |
| 11. Elser Residences<br>646 units  | 26. New Courthouse   |
| 12. Waldorf Astoria<br>360 units   | 27. Miami River<br>1,678 residential units   330 hotel rooms<br>196,882 sf of retail |
| 13. YotelPad<br>453 units  | 28. Namdar<br>640 units  |
| 14. Lalezarian Properties<br>565 units   | 29. Hyatt   Gencom<br>1,500 units  |
| 15. 501 First Residences<br>448 units  | 30. Aston Martin Residences<br>434 units   |





### MIAMI WORLD CENTER & THE PARAMOUNT LUXURY CONDO

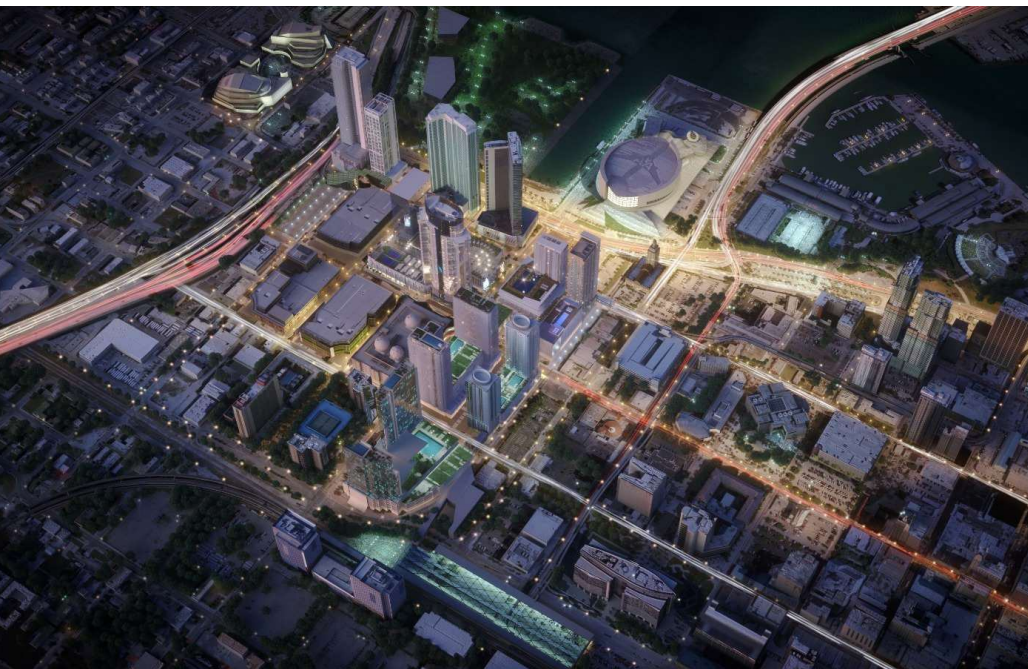
Miami World Center is a new mega project and Downtown's game changer. With nearly 30 acres and an estimated price tag of more than \$1.5 billion, Miami World Center will be the second largest urban development in the United States. It will include 765,000 Sq.Ft of signature retail, 4.5 acres of open space, 7,000 new parking spaces, and an ultra-modern Marriott Marquis World Convention Center Hotel with 1,800 rooms, 600,000 Sq.ft of convention space, and an 80,000 Sq.ft outdoor event deck. To top it all off – literally – the Master Plan for Miami Worldcenter will include multiple residential towers with over 1,000 units. Read more on Miami World Center.













DISTANCE TO MIAMI WORLDCENTER

OFFICE CONDO FOR LEASE & SALE



**Subject Property**



# BAYSIDE MARKETPLACE

## OFFICE CONDO FOR LEASE & SALE

### AN OPEN AIR SHOPPING CENTER BY THE WATER

24 million people a year visit Bayside Market. Recently the end lease was purchased by Ashkenazy and they are currently reteneting the entire marketplace with vibrant new restaurants,bars and retail. Downtown Miami's skyline has a major new \$18 million player. The Skyviews Miami Observation Wheel debuted recently at the Bayside Marketplace.The 200-foot high Ferris wheel — or observation wheel, allows you to take in spectacular views of Biscayne Bay and the city's skyline.





## SE 1ST STREET

SE 1st Street is a tree-line promenade with many of the last remaining historical buildings in Miami. It stretches all the way east to Bayfront park and Biscayne Bay. Through the most recent years, there's been a profuse organic growth of European cafes, restaurant and shopping.





**WHOLESALE JEWELRY SALES IN DOWNTOWN MIAMI TOTALED CLOSE TO \$1 BILLION**

Downtown Miami's Jewelry District comprises four city blocks, bounded by Flagler Street, North Miami Avenue, NE 2nd Street and NE 2nd Avenue, and the main street goes through NE 1st Street. Downtown Miami did close to \$1 Billion in jewelry wholesales in 2012. The second largest jewelry center in the Nation, The Seybold Building facilitates 280 jewelers and is located near all the subject sites. Tenants in the building have confirmed that there is a waiting list to get a space, and rent is being collected for the full year in advance. Miami is competing with Los Angeles and New York to become the city with highest number of jewelry sales, and to offer the most attractive environment for shoppers as well as retailers. There is a tremendous potential in catering to Miami's jewelry market since buildings with these amenities are nonexistent today









POPULATION	1 MILE	5 MILES	10 MILES
Total Population	55,087	479,819	1,179,175
Average Age	38.1	40.7	41.4
Average Age (Male)	38.8	39.7	39.9
Average Age (Female)	37.6	41.8	42.7
HOUSEHOLDS & INCOME	1 MILE	5 MILES	10 MILES
Total Households	37,588	239,140	513,014
# of Persons per HH	1.5	2.0	2.3
Average HH Income	\$84,826	\$65,436	\$70,315
Average House Value	\$265,973	\$312,070	\$346,591
ETHNICITY (%)	1 MILE	5 MILES	10 MILES
Hispanic	62.6%	68.5%	66.8%
RACE	1 MILE	5 MILES	10 MILES
Total Population - White	41,424	310,871	747,938
Total Population - Black	3,438	77,176	222,040
Total Population - Asian	1,729	6,754	16,559
Total Population - Hawaiian	0	138	664
Total Population - American Indian	225	1,391	1,767
Total Population - Other	1,997	28,665	61,401

2020 American Community Survey (ACS)



Map data ©2025 Google



## OUR SERVICES

**FA Commercial** is a specialized team led by Fabio & Sebastian Faerman focusing on investment sales, landlord & tenant representation, market analysis, site selection, strategy selection, and portfolio overview.

Furthermore, our approach is distinctive, comprehensive, and thorough. We capitalize on opportunities and provide clients with strategies for their real estate properties.

Fabio Faerman is the director of the commercial division at Fortune International Realty where he has been the top producer 10 years in a row. Since 2002 Fabio and his team have sold over \$1 Billion in assets across South Florida.

### INVESTMENT SALES

Mitigating risk and maximizing value for clients using holistic commercial real estate services plus implementing robust and personalized marketing strategies.

### OWNER REPRESENTATION

Providing unparalleled representation for property owners, connecting owners with tenants, enhancing the tenant mix, and creating property specific solutions.

### TENANT REPRESENTATION

Advising tenants on market trends, demographic analysis, site selection and lease negotiation tactics to assist clients when deciding on their investment.

**FA Commercial** is the expert leading with both **landlord and tenant representation**.







**FABIO FAERMAN, CCIM, MBA**  
Broker Associate  
fff@facommercial.com  
+1 786 262 9966



**SEBASTIAN FAERMAN**  
Sales Associate  
sf@facommercial.com  
+1 786 262 3771



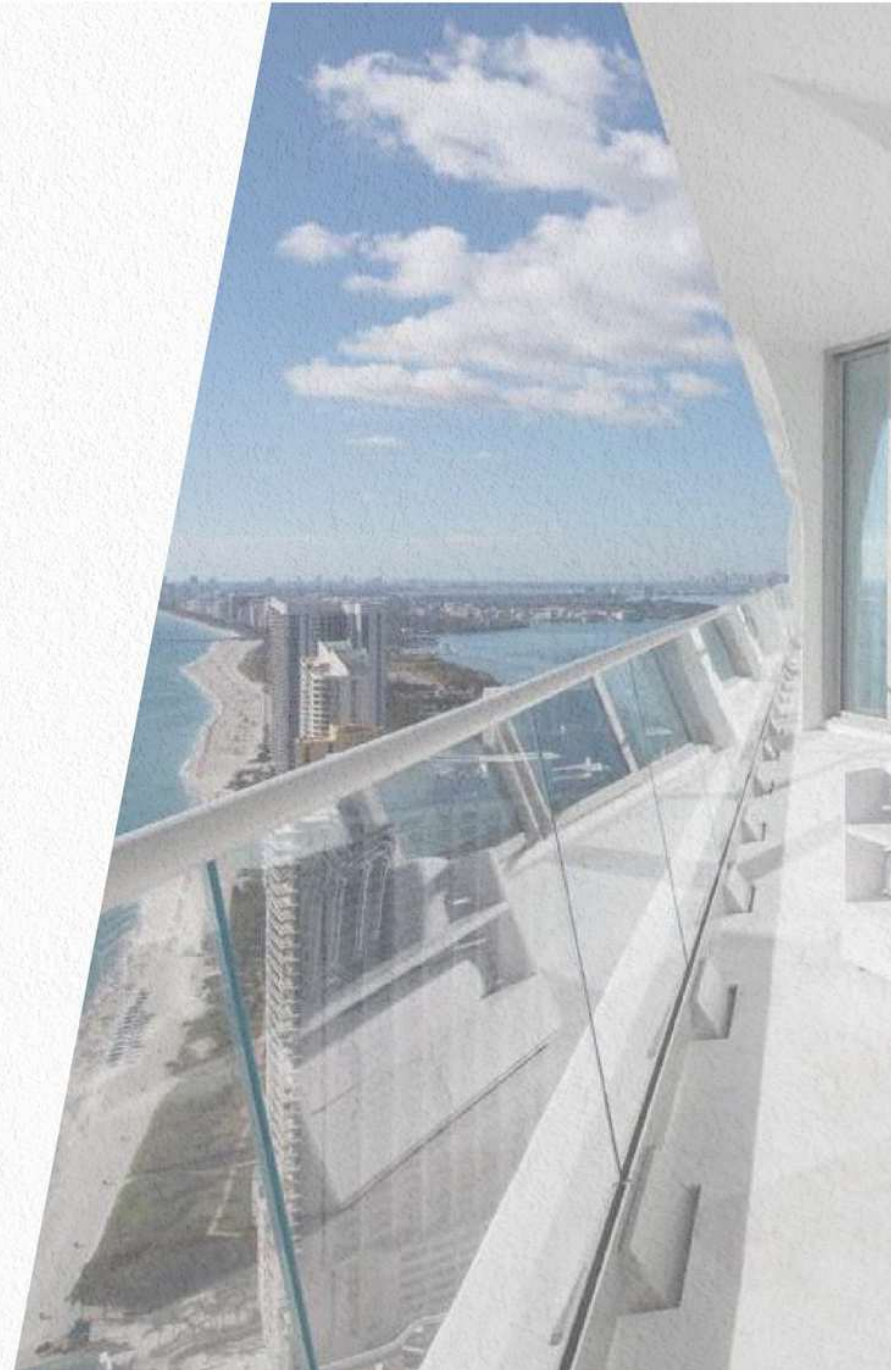
## COMMERCIAL DIVISION OF FORTUNE

### FORTUNE INTERNATIONAL GROUP

Synonymous with excellence, quality, customer service and unwavering commitment to the highest standards of luxury, Fortune International Group has been a recognized leader in development, sales and marketing since 1983. The company's prestigious development portfolio includes many of the most prominent residential properties in South Florida including Jade Signature, The Ritz-Carlton Residences Sunny Isles Beach, Auberge Beach Residences and Spa Fort Lauderdale, Jade Residences Brickell; Jade Beach, Jade Ocean, and Hyde Resort & Residences Hollywood.

### FORTUNE INTERNATIONAL REALTY

Is the premier, exclusive on-site sales and marketing representative for third-party development projects in South Florida, having represented some of South Florida's most successful projects: Missoni Baia, Una Residences, 57 Ocean, 2000 Ocean, Monaco Yacht Club, 1 Hotel & Homes South Beach, Brickell Flatiron, SLS Lux & Gran Paraiso, among others with thousands of sales to date. Led by visionary founder Edgardo Defortuna, Fortune International Group has 18 offices around the world with nearly 1,000 associates. Fortune's international broker network reaches legions of prospective buyers from South Florida to Buenos Aires, Hong Kong to São Paulo, and Manhattan to Paris.





**CONFIDENTIALITY & DISCLAIMER**

All materials and information received or derived from FA Commercial Advisors, LLC its directors, officers, agents, advisors, affiliates and/ or any third party sources are provided without representation or warranty as to completeness, veracity, or accuracy, condition of the property, compliance or lack of compliance with applicable governmental requirements, developability or suitability, financial performance of the property, projected financial performance of the property for any party's intended use or any and all other matters.

Neither FA Commercial Advisors, LLC its directors, officers, agents, advisors, or affiliates makes any representation or warranty, express or implied, as to accuracy or completeness of any materials or information provided, derived, or received. Materials and information from any source, whether written or verbal, that may be furnished for review are not a substitute for a party's active conduct of its own due diligence to determine these and other matters of significance to such party. FA Commercial Advisors, LLC will not investigate or verify any such matters or conduct due diligence for a party unless otherwise agreed in writing.


EACH PARTY SHALL CONDUCT ITS OWN INDEPENDENT INVESTIGATION AND DUE DILIGENCE. Any party contemplating or under contract or in escrow for a transaction is urged to verify all information and to conduct their own inspections and investigations including through appropriate third party independent professionals selected by such party. All financial data should be verified by the party including obtaining and reading applicable documents and reports and consulting appropriate independent professionals. FA Commercial Advisors, LLC makes no warranties and/or representations regarding the veracity, completeness, or relevance of any financial data or assumptions. FA Commercial Advisors, LLC does not serve as a financial advisor to any party regarding any proposed transaction. All data and assumptions regarding financial performance, including that used for financial modeling purposes, may differ from actual data or performance. Any estimates of market rents and/or projected rents that may be provided to a party do not necessarily mean that rents can be established at or increased to that level. Parties must evaluate any applicable contractual and governmental limitations as well as market conditions, vacancy factors and other issues in order to determine rents from or for the property.


Legal questions should be discussed by the party with an attorney. Tax questions should be discussed by the party with a certified public accountant or tax attorney. Title questions should be discussed by the party with a title officer or attorney. Questions regarding the condition of the property and whether the property complies with applicable governmental requirements should be discussed by the party with appropriate engineers, architects, contractors, other consultants, and governmental agencies. All properties and services are marketed by FA Commercial Advisors, LLC in compliance with all applicable fair housing and equal opportunity laws.



*Presented By:*

FABIO FAERMAN, CCIM

 786.262.9966

 [info@facommercial.com](mailto:info@facommercial.com)

