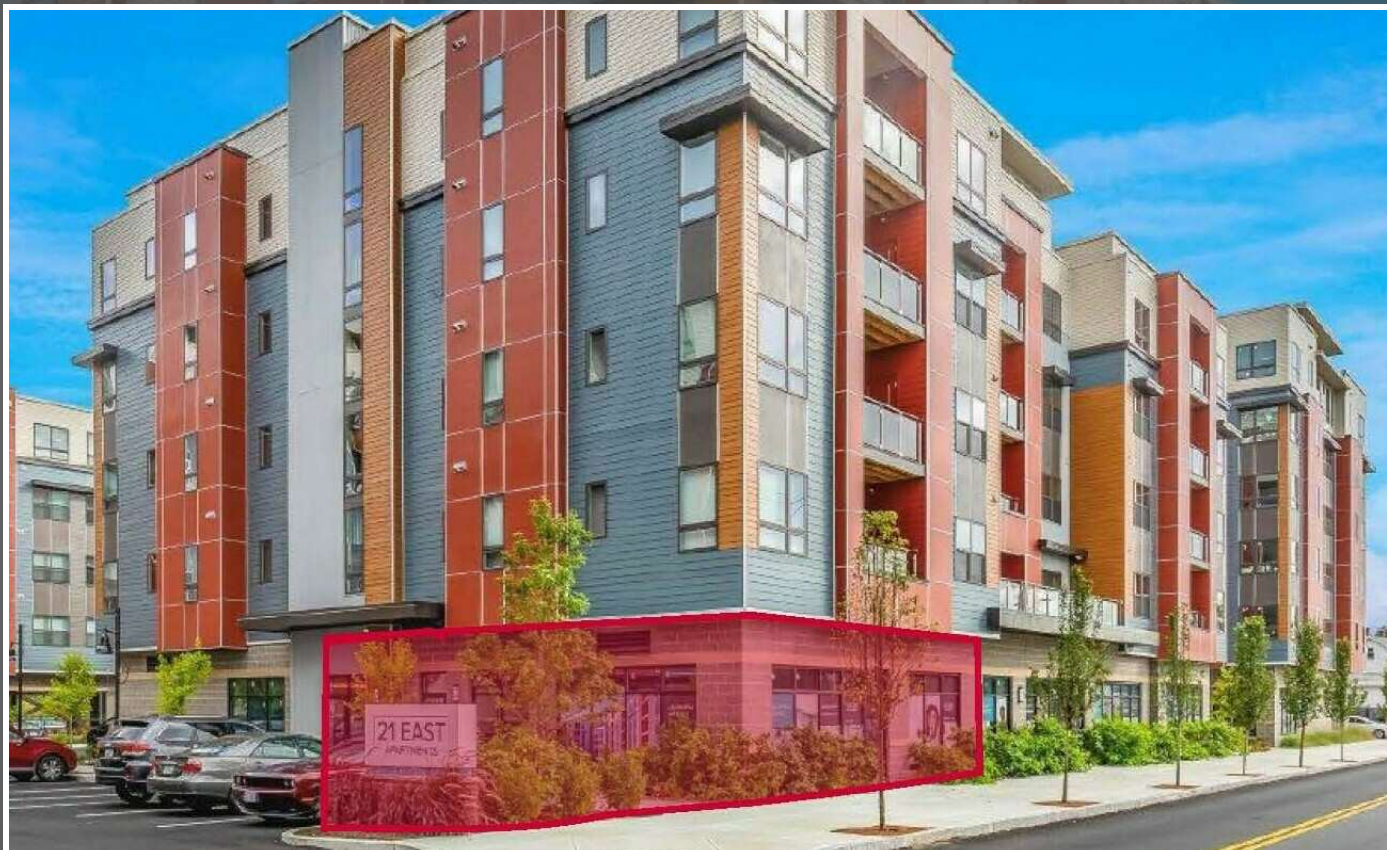


RETAIL SPACE FOR LEASE



21 EAST STREET

North Attleborough, MA 02760

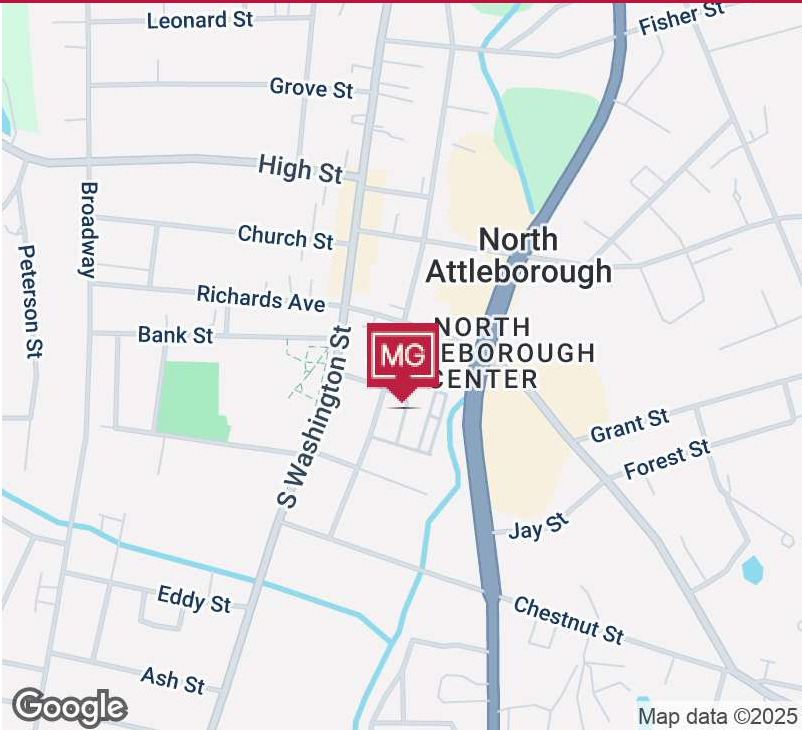
DAN FEINER

Vice President
401.751.3200 x3310
dan@mgcommercial.com

MG COMMERCIAL

365 Eddy Street, Penthouse Suite
Providence, RI 02903
401.751.3200 | mgcommercial.com

PROPERTY SUMMARY



PROPERTY DESCRIPTION

MG Commercial is pleased to market 5,000 SF ground level retail space at 21 East Street, North Attleboro. This new development offers prime retail space within a brand new, upscale residential development with over 190 market-rate apartments in the heart of North Attleboro. Join Dogtopia & Home of Greek Yogurt in this new development with quick access to I-95, I-495 and RT 1.

PROPERTY HIGHLIGHTS

- New residential upscale apartments
- Open retail floor plans
- Dedicated clientele/customers living above
- Beautiful curb appeal
- Perfect for retail or health-related fields
- End cap
- Large windows allowing natural light

LOCATION DESCRIPTION

North Attleboro is a thriving community strategically located between Providence and Boston, offering access to a broad customer base both locally and in the surrounding communities. The town has a strong mix of residential neighborhoods, retail centers, and office parks, creating a dynamic local economy. There is dedicated storefront parking and additional parking across the street for customers. We have 5,032 SF subdividable to 2,399 SF.

OFFERING SUMMARY

Lease Rate:	\$22.50 SF/yr (NNN)
Available SF:	2,394 - 5,032 SF

DEMOGRAPHICS	1 MILE	3 MILES	5 MILES
Total Households	5,598	16,773	36,966
Total Population	12,789	41,833	94,544

DAN FEINER
Vice President
401.751.3200 x3310
dan@mgcommercial.com

365 Eddy Street, Penthouse Suite
Providence, RI 02903
mgcommercial.com

