



1137 WEST MCDOWELL ROAD

PHOENIX, ARIZONA 85007

+/- 1,732 Square Foot Office/Medical Building

\$24.25 Per Square Foot, Modified Gross

R-5 Zoning

Freestanding Building with McDowell Road Frontage

Recently Renovated Interior

Five Offices, Lobby, Conference Room, and Bullpen

Ample Parking

Located E/NEC McDowell Road & 15th Avenue

DEMOGRAPHICS	1 MILE	3 MILES	5 MILES
MEDIAN AGE:	32.4	31.3	31.6
POPULATION:	11,722	73,775	356,593
AVERAGE HH INCOME:	\$60,543	\$71,540	\$89,902

TRAFFIC COUNTS	VPD
W MCDOWELL RD:	20,818
S 15TH AVENUE:	10,291

YEAR BUILT	1941 (Renovated 2017)
LOT SIZE	0.17 AC
ZONING	R-5, Phoenix
PARCEL NUMBER	111-19-131

Matt Harper, CCIM

Senior Vice President

623.692.9435

matt@citywidecre.com

Leah Motsinger

Senior Associate

602.423.3619

leah@citywidecre.com

2122 East Highland Avenue, Suite 225 • Phoenix, Arizona 85016 • 602.313.1000 • citywidecre.com



Matt Harper, CCIM

Senior Vice President

623.692.9435

matt@citywidecre.com

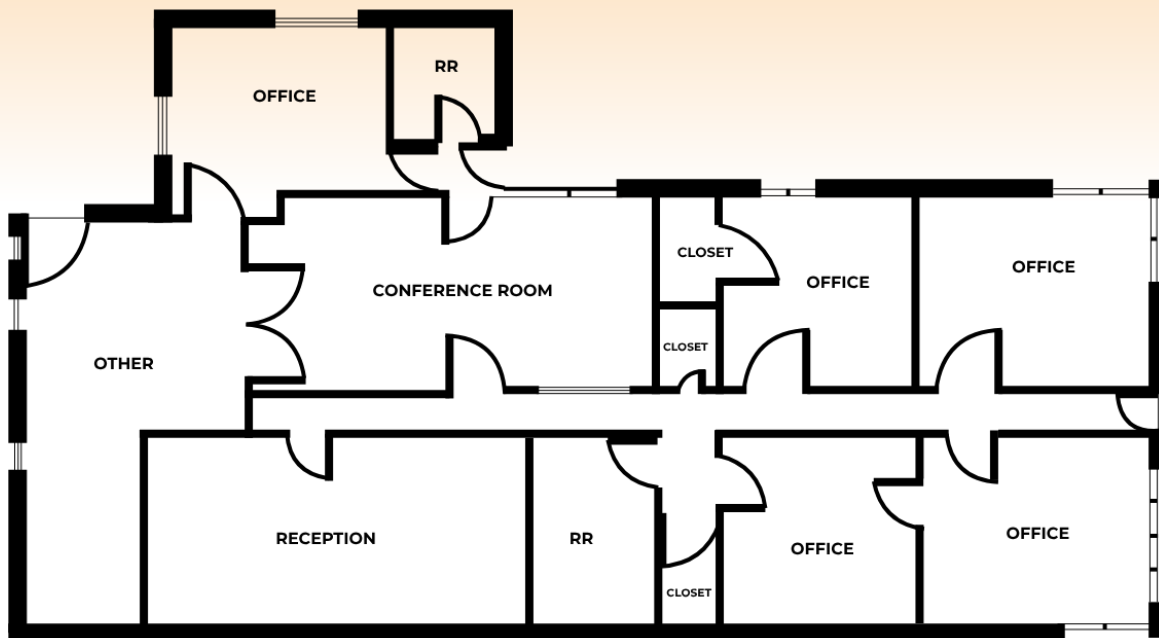
Leah Motsinger

Senior Associate

602.423.3619

leah@citywidecre.com

2122 East Highland Avenue, Suite 225 • Phoenix, Arizona 85016 • 602.313.1000 • citywidecre.com



Matt Harper, CCIM

Senior Vice President

623.692.9435

matt@citywidecre.com

Leah Motsinger

Senior Associate

602.423.3619

leah@citywidecre.com

2122 East Highland Avenue, Suite 225 • Phoenix, Arizona 85016 • 602.313.1000 • citywidecre.com