

1830 East Paris Avenue

Grand Rapids, MI 49546

± 110,706 SF ± 23.7 Acres





1830 E Paris Ave

3 Story Suburban Building

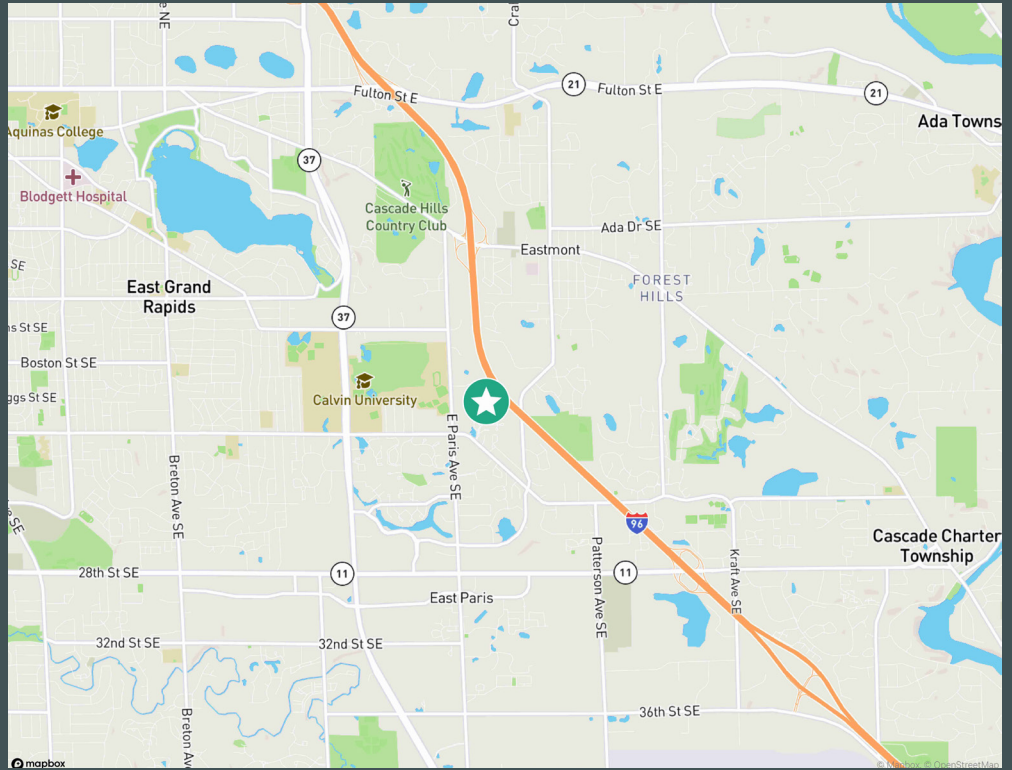
Located off East Paris Ave., the three story building has been well maintained and has a wonderful setting with wooded and water views. The building also has an exterior patio.

110K

Square Feet

23

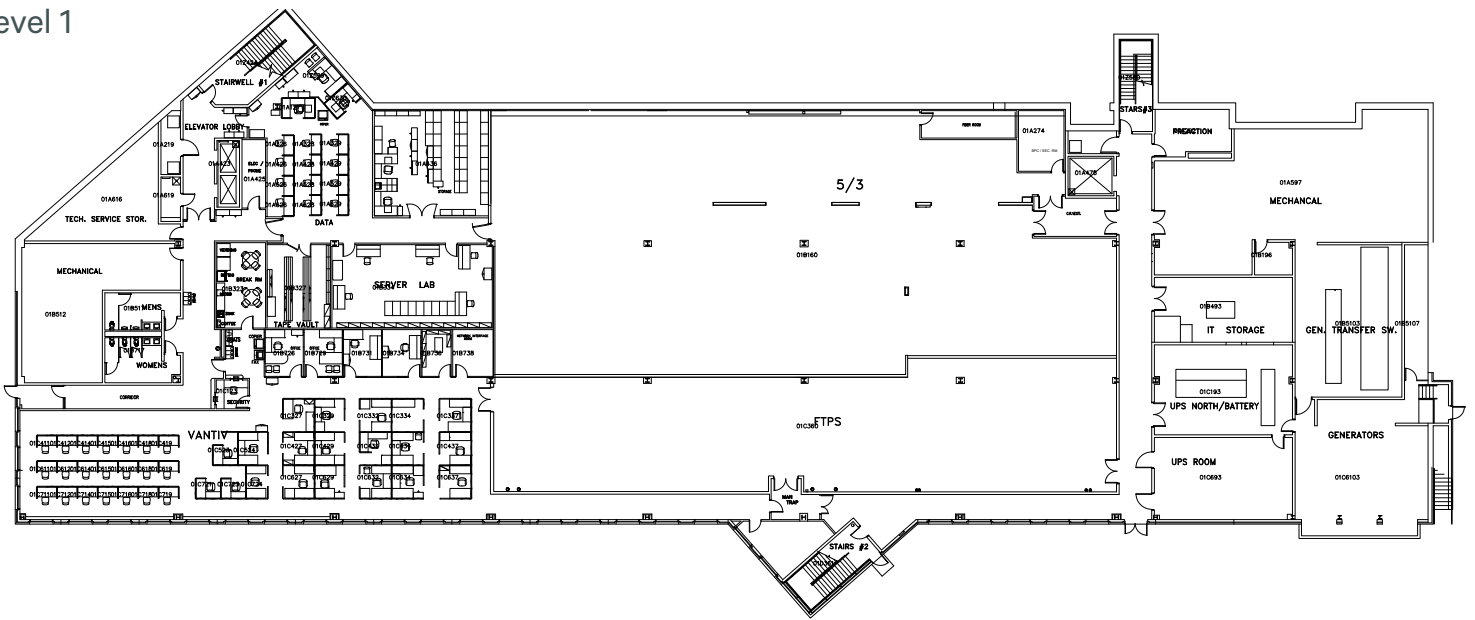
Acres



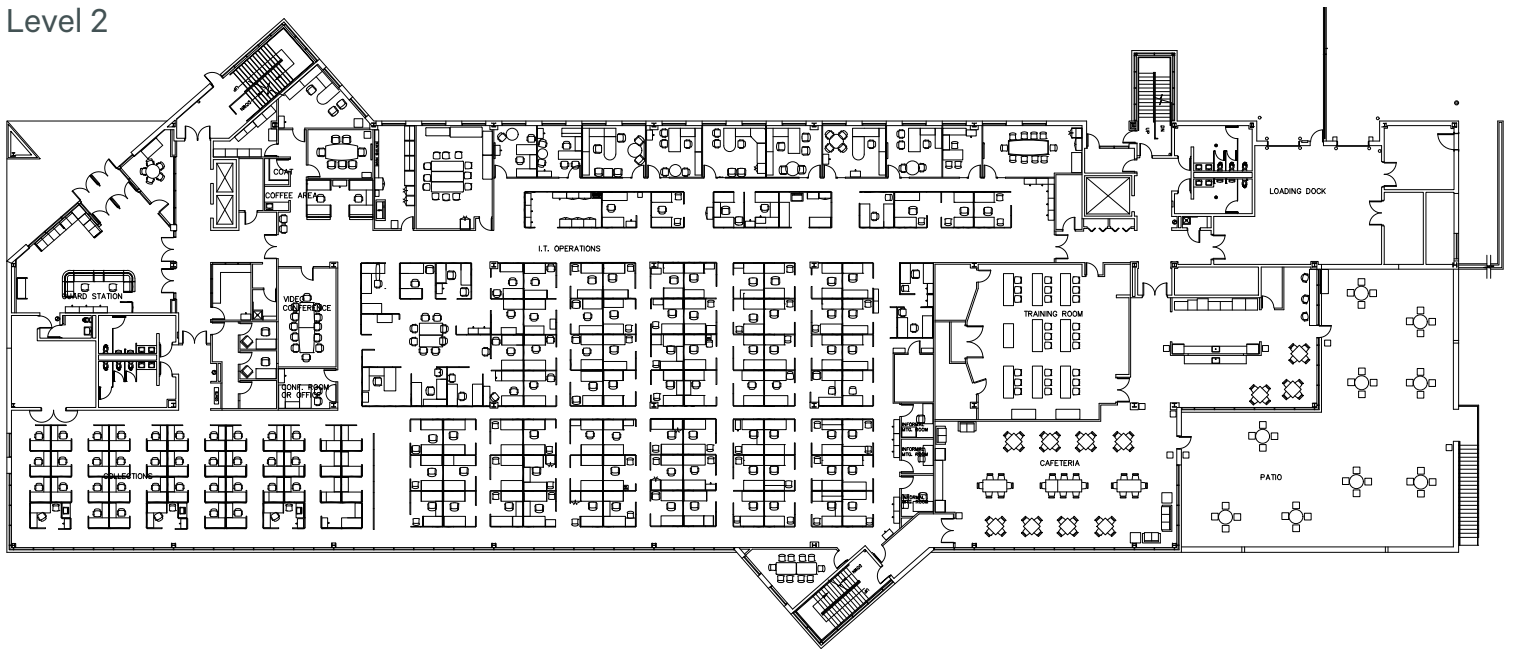
Property Overview

Parcel #	41-18-01-351-007
Municipality	City of Kentwood
Size	110,706 SF
Land	23.75 Acres
Built/Remodeled	1989/2010
Parking	393 Surface Spaces
Zoning	C-4 Office/Business

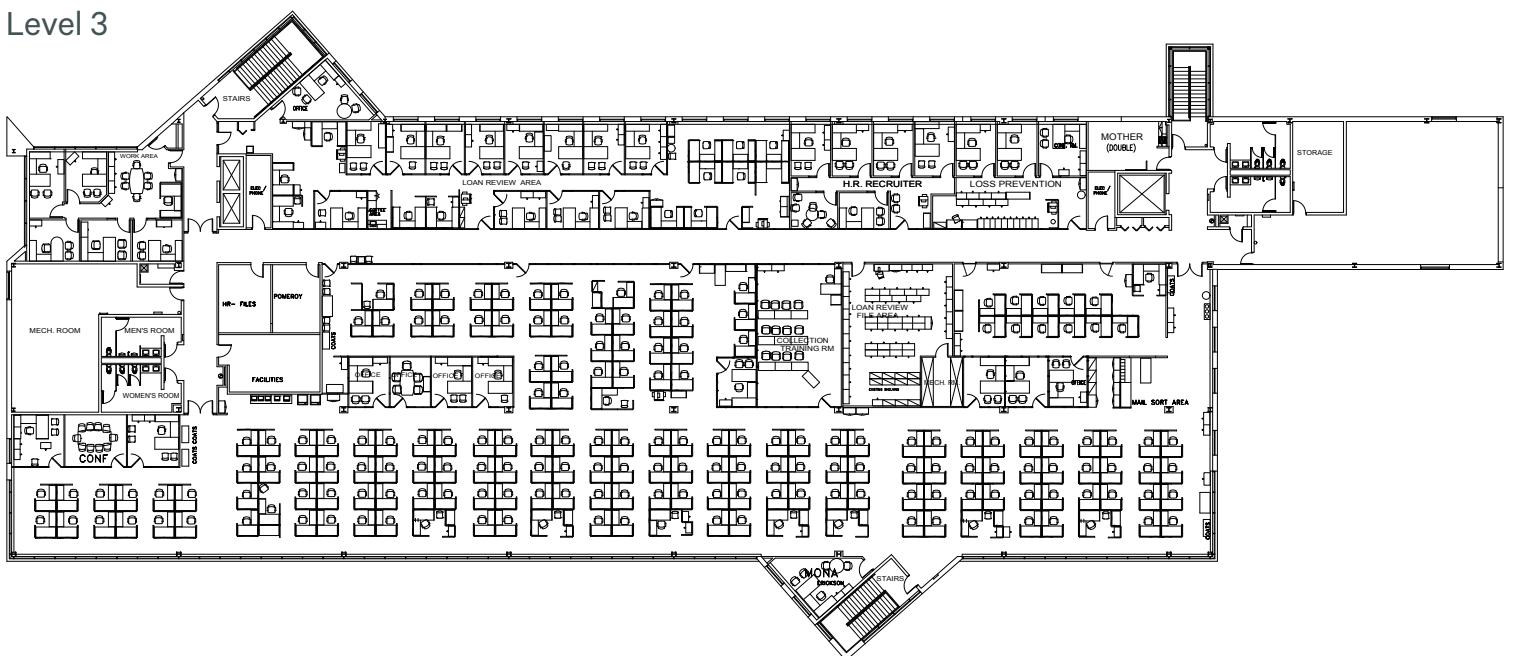
Level 1



Level 2



Level 3





Contact Us

Nate Scherpenisse

First Vice President

+1 616 581 2434

nate.scherpenisse@cbre.com

© 2024 CBRE, Inc. All rights reserved. This information has been obtained from sources believed reliable, but has not been verified for accuracy or completeness. You should conduct a careful, independent investigation of the property and verify all information. Any reliance on this information is solely at your own risk. CBRE and the CBRE logo are service marks of CBRE, Inc. All other marks displayed on this document are the property of their respective owners, and the use of such logos does not imply any affiliation with or endorsement of CBRE. Photos herein are the property of their respective owners. Use of these images without the express written consent of the owner is prohibited.