

2321 WOLCOTT STREET
FERNDALE, MICHIGAN

OFFICE FOR LEASE
1,980 Square Feet Available

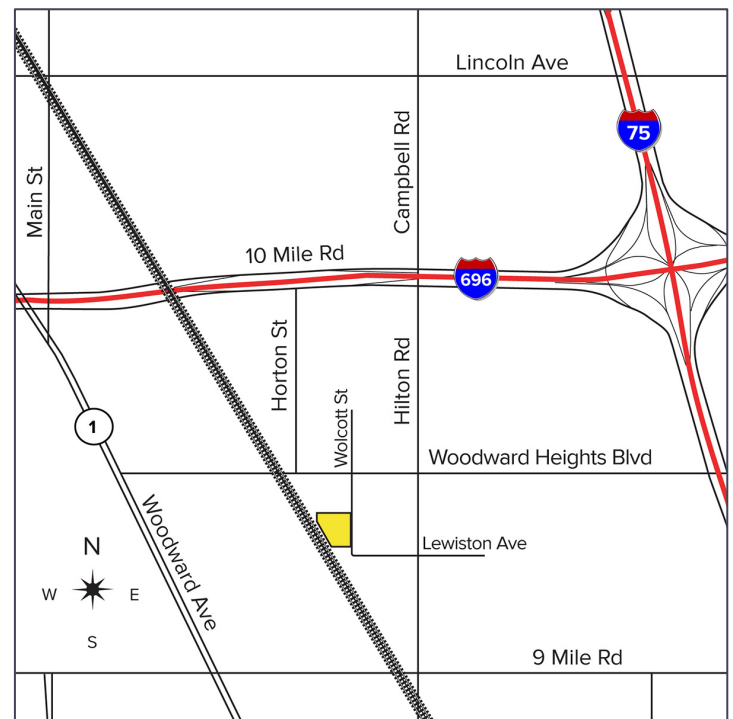


**SIGNATURE
ASSOCIATES**
KNOW SIGNATURE | KNOW RESULTS



PROPERTY FEATURES

- 1,980 square feet available
- Move-in ready suite in popular area of Ferndale
- Building completely renovated by new ownership in 2020
- Convenient parking
- Open plan with workspace, renovated restrooms, kitchenette & storage loft area
- Zoned I-1
- Lease Rate: \$23.00/sq. ft. G+U



For more information, please contact:

DAN MORROW
(248) 799 3144
dmorrow@signatureassociates.com

JOE PLASKEY
(248) 948 0110
jplaskey@signatureassociates.com

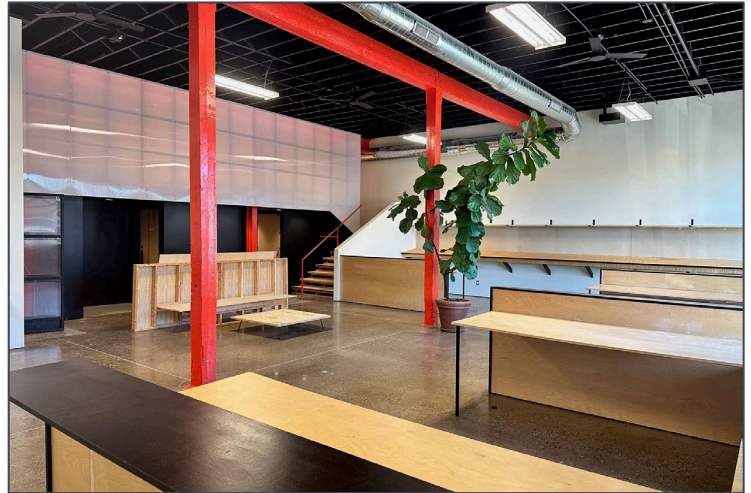
SIGNATURE ASSOCIATES
One Towne Square, Suite 1200
Southfield, MI 48076
www.signatureassociates.com

2321 Wolcott Street – Ferndale, Michigan

Office For Lease

1,980
Square Feet
AVAILABLE

Interior Photos



For more information, please contact:

DAN MORROW

(248) 799 3144

dmorrow@signatureassociates.com

JOE PLASKEY

(248) 948 0110

jplaskey@signatureassociates.com

SIGNATURE ASSOCIATES

One Towne Square, Suite 1200

Southfield, MI 48076

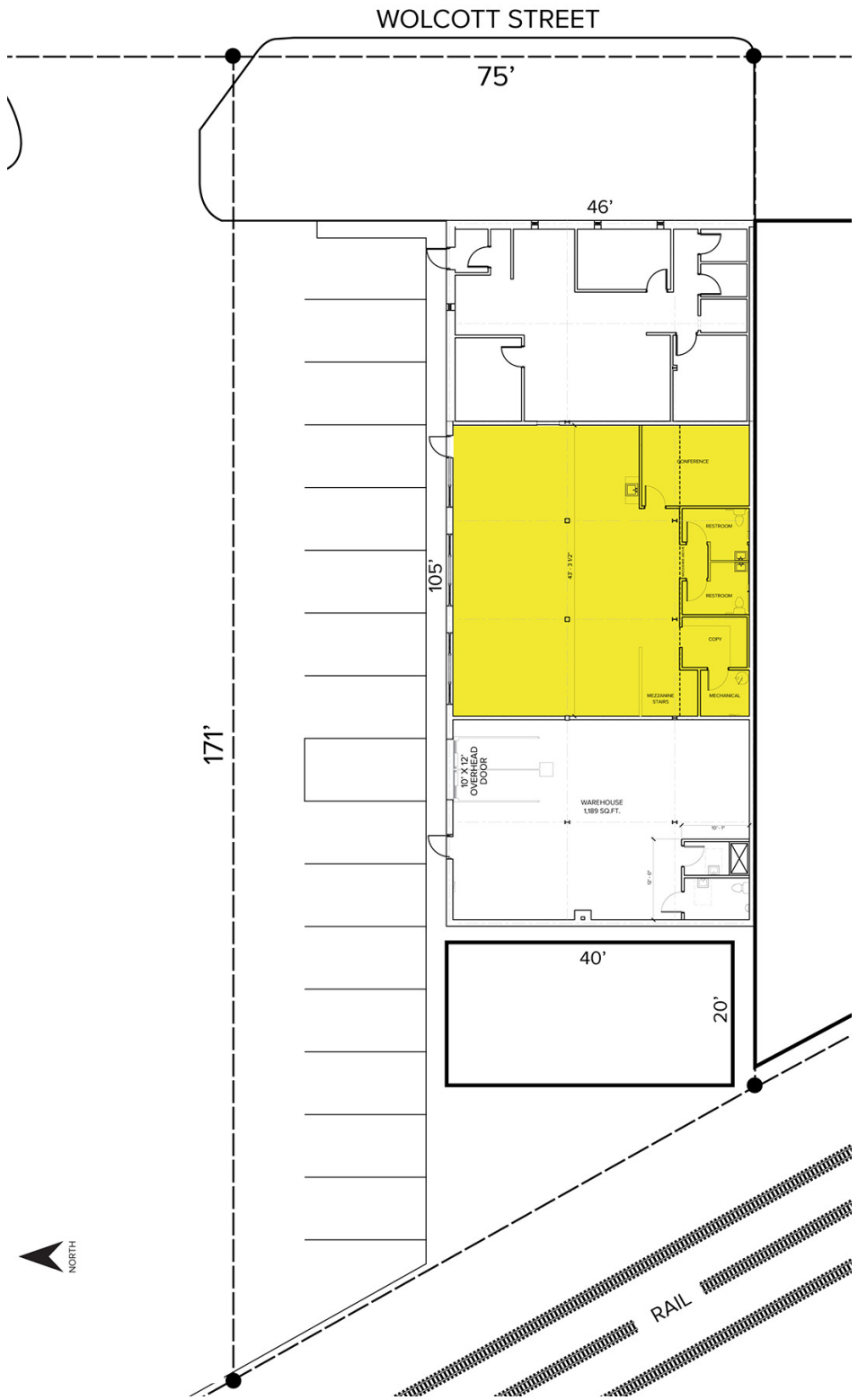
www.signatureassociates.com

Information is subject to verification and no liability for errors or omissions is assumed. Price is subject to change and listing withdrawal.

2321 Wolcott Street – Ferndale, Michigan
Office For Lease

1,980
Square Feet
AVAILABLE

Site Plan



For more information, please contact:

DAN MORROW
(248) 799 3144
dmorrow@signatureassociates.com

JOE PLASKEY
(248) 948 0110
jplaskey@signatureassociates.com

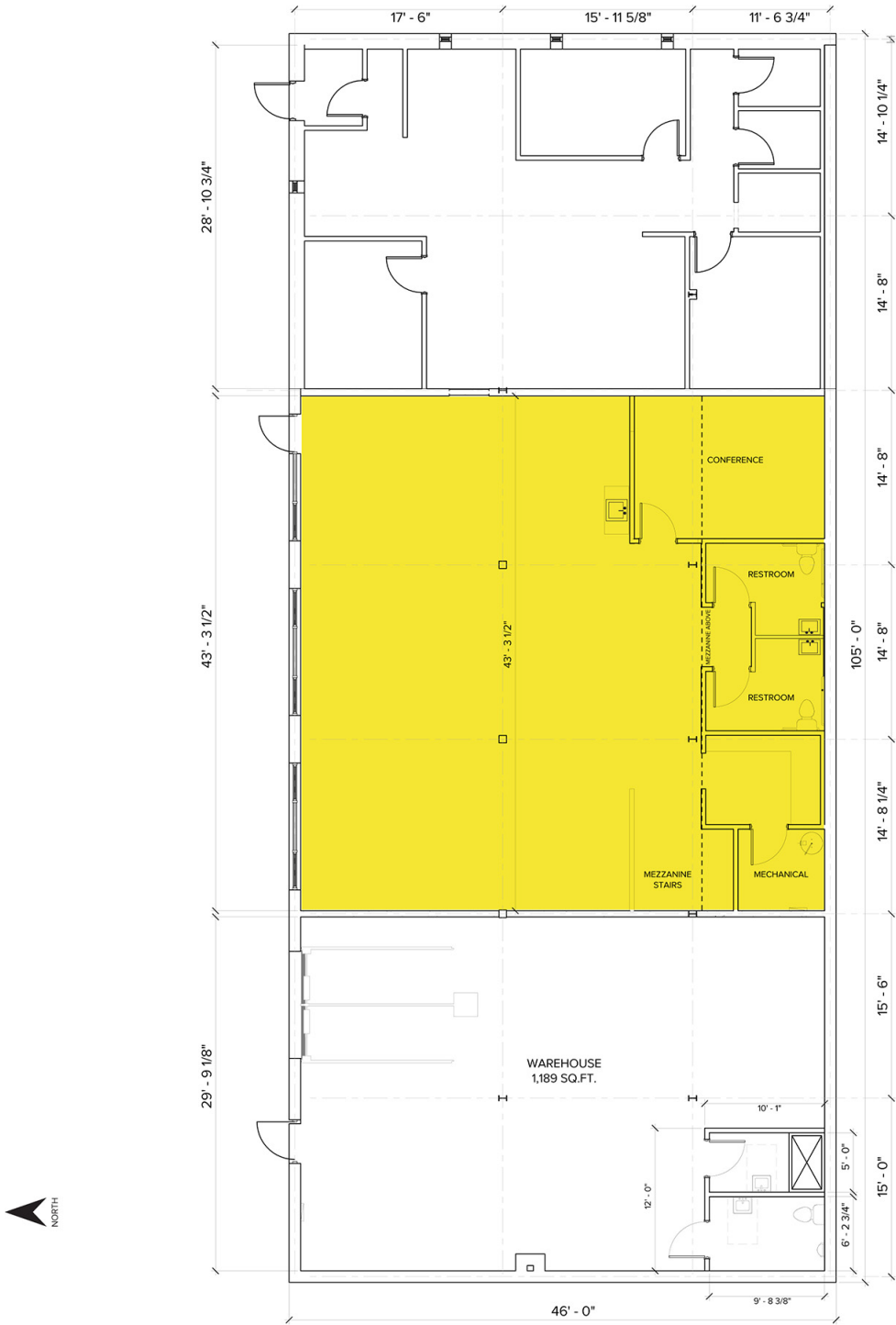
SIGNATURE ASSOCIATES
One Towne Square, Suite 1200
Southfield, MI 48076
www.signatureassociates.com

Information is subject to verification and no liability for errors or omissions is assumed. Price is subject to change and listing withdrawal.

2321 Wolcott Street – Ferndale, Michigan
Office For Lease

1,980
Square Feet
AVAILABLE

Floor Plan



For more information, please contact:

DAN MORROW
(248) 799 3144
dmorrow@signatureassociates.com

JOE PLASKEY
(248) 948 0110
jplaskey@signatureassociates.com

SIGNATURE ASSOCIATES
One Towne Square, Suite 1200
Southfield, MI 48076
www.signatureassociates.com

2321 Wolcott Street – Ferndale, Michigan

Office For Lease

1,980
Square Feet
AVAILABLE

Aerial



For more information, please contact:

DAN MORROW

(248) 799 3144

dmorrow@signatureassociates.com

JOE PLASKEY

(248) 948 0110

jplaskey@signatureassociates.com

SIGNATURE ASSOCIATES

One Towne Square, Suite 1200

Southfield, MI 48076

www.signatureassociates.com

Information is subject to verification and no liability for errors or omissions is assumed. Price is subject to change and listing withdrawal.