



BERKSHIRE HATHAWAY
HomeServices
Georgia Properties

COMMERCIAL DIVISION

Up to 5 year Sub Lease available

7,000+/- s.f. BASEMENT LEVEL

Office/Retail space for lease

On Gainesville Square

Very inexpensive space



Basement level - 200 Washington Street, NW Gainesville

Marketed By:

Brent Hoffman

Berkshire Hathaway Home Services GA Properties

500 Jesse Jewell Pkwy., SE Suite 300

Gainesville, GA 30501

Direct- 770-533-6721

Office – 770-536-3007

Brent@BrentHoffman

www.BrentHoffman.com



Property Information

\$2,750 (\$4.71 psf) per month plus fair utilities

Very Inexpensive space



- ◆ Sub lease this 7,000=??- s.f basement level office/retail space
- ◆ Large open spaces
- ◆ 3+ offices, 3 ADA bathrooms
- ◆ Bright, open airy space-12' ceilings
- ◆ Track lighting & ceiling fans
- ◆ Computer wired offices—CAT 5
- ◆ Security System, Sprinkled
- ◆ Wide double staircase & elevator
- ◆ Private access door on Main Street
- ◆ **Great location on the Gainesville Square**
- ◆ Free parking on Square & at deck
- ◆ POTENTIAL USES: Office, retail, furniture, consignment, church, education, artist/yoga,

Nice Video (big will take a minute to download)



More info and video at: <https://www.brenthoffman.com/listings/I0090.html>



**Double wide staircase access
to lower level**



Model / Photo area

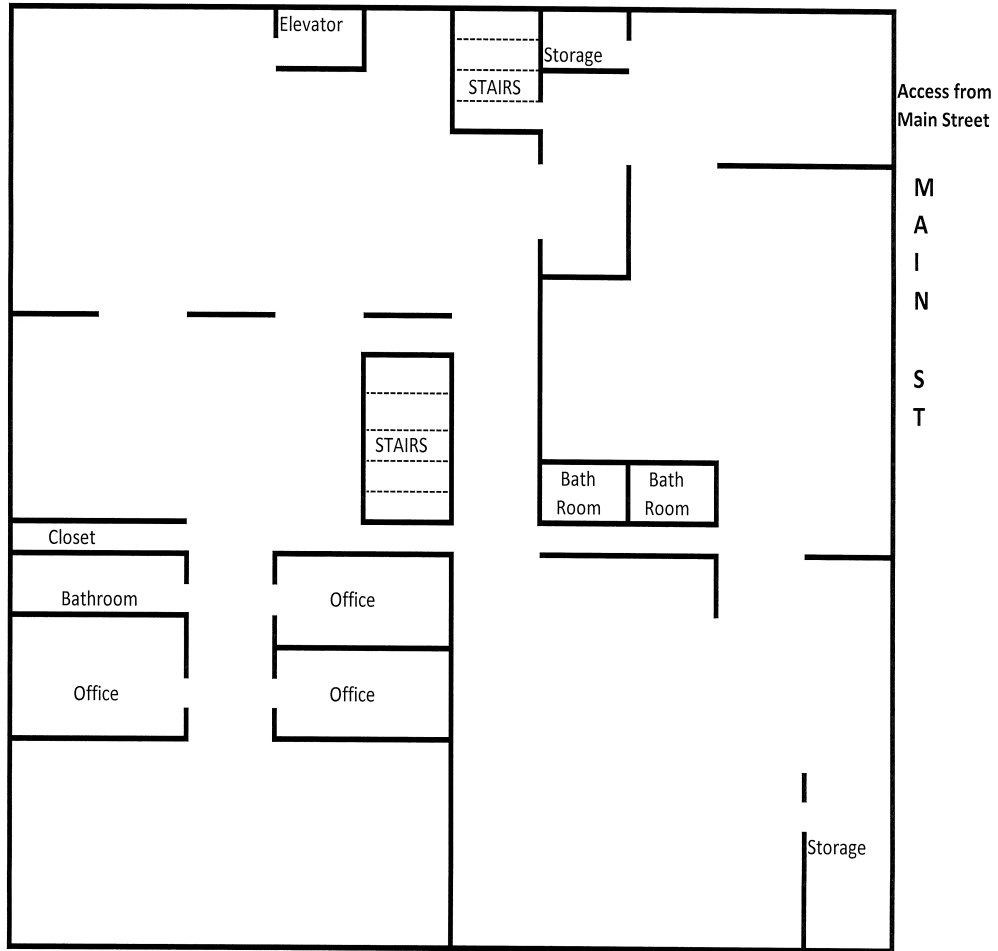


Large open spaces



Plenty of room for offices

7,000 s.f lower level



Lower Level 200 Washington Street



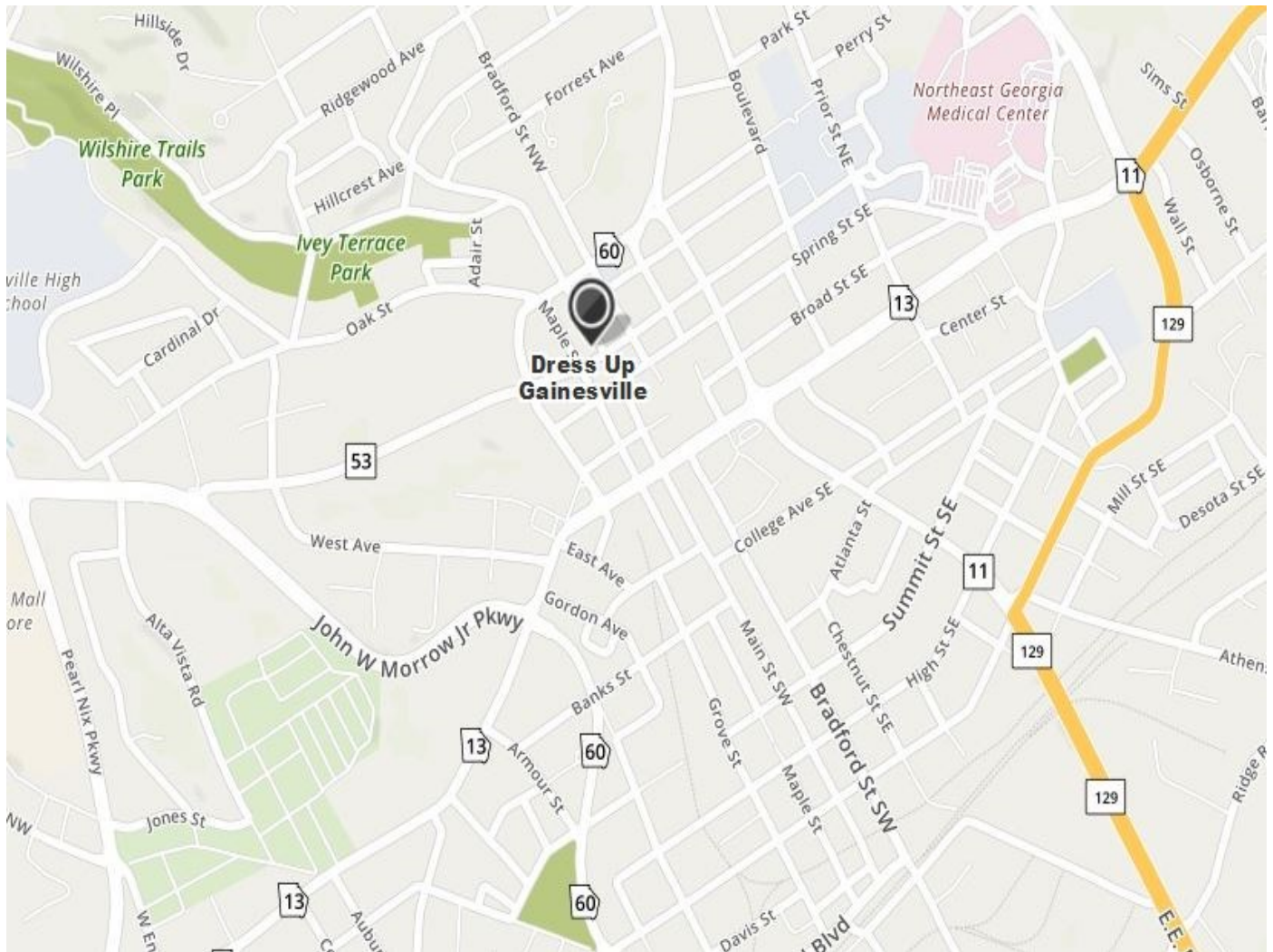


BERKSHIRE HATHAWAY
HomeServices
Georgia Properties

COMMERCIAL DIVISION

Location Map

200 Washington St., NW Gainesville



From I-985 North. Take Exit 22 - Hwy 129/E.E. Butler Parkway. Left at bottom of ramp towards Gainesville. Left on Washington Street. Building will be on your right.