

FOR SUBLEASE - SOUTH LINCOLN OFFICE SPACE

7130 S 29TH ST, LINCOLN, NE 68516

OFFICE | 750 SF | \$1,500.00 PER MONTH (GROSS)



PRESENTED BY:

Katy Martin
402.617.8508

kmartin@lee-associates.com

Jared Wegner
308.627.2136

jwegner@lee-associates.com

FOR SUBLEASE

7130 S 29TH ST, LINCOLN, NE 68516

Office | 750 SF | \$1,500.00 per month (Gross)



PROPERTY DESCRIPTION

South Lincoln Office Sublease – A Perfect Home for Your Business.

Discover a bright and inviting office space in the heart of South Lincoln. With modern finishes, abundant natural light through large windows, this is the ideal location for a small office user, counselor, or service-based business. This office provides a professional yet comfortable environment to grow your business.

PROPERTY HIGHLIGHTS

- 2nd floor sublease space
- Spacious office suites with ample natural light
- Recently updated with modern finishes
- Private, quiet setting ideal for professionals and counselors
- Flexible lease terms to accommodate your business needs

CONTACT

Katy Martin

kmartin@lee-associates.com
C 402.617.8508

Jared Wegner

jwegner@lee-associates.com
C 308.627.2136

LOCATION DESCRIPTION

Conveniently located just off S. 29th and Pine Lake Road. Surrounded by retail, dining, and other professional services in a highly desirable South Lincoln area.

OFFERING SUMMARY

Lease Rate:	\$1,500.00 per month (Gross)
Available SF:	750 SF
Building Size:	14,401 SF

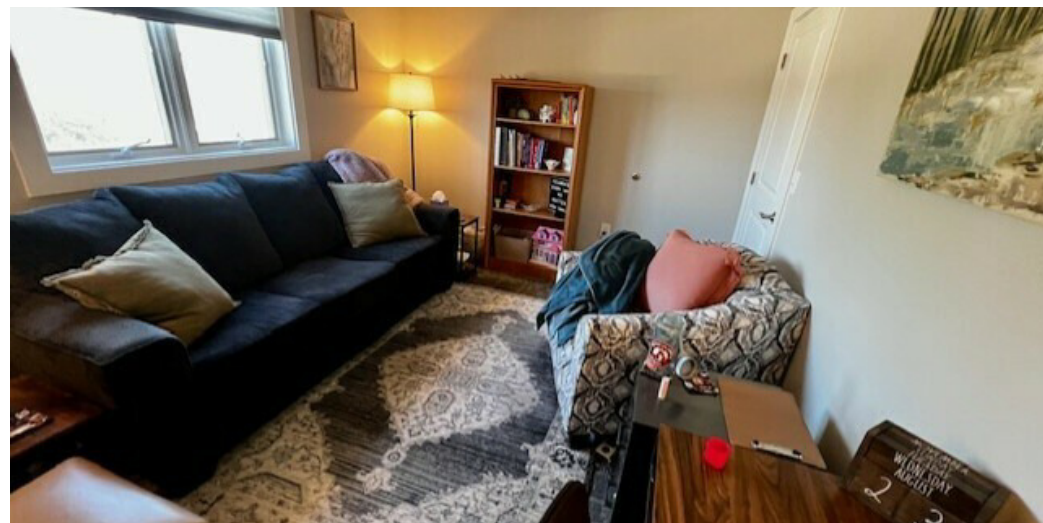
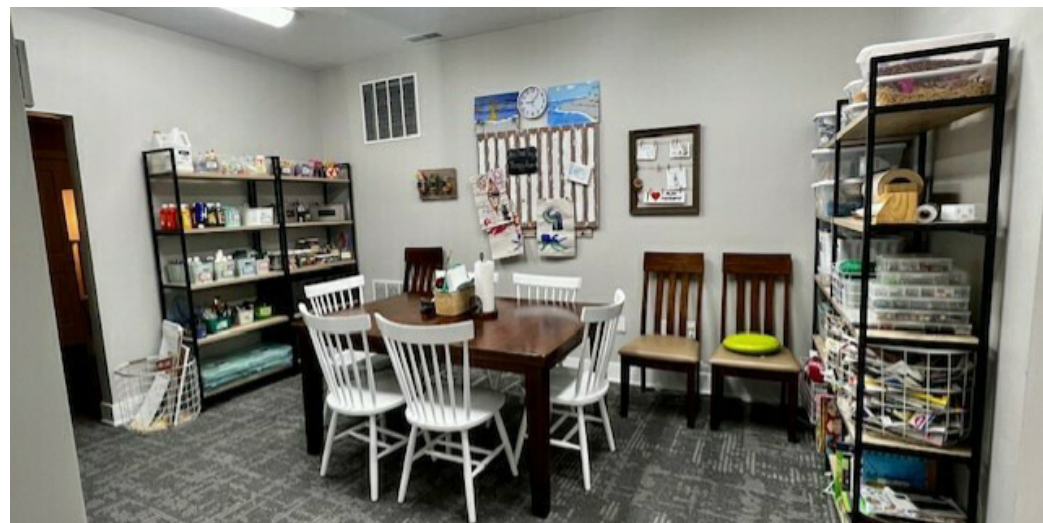
We obtained the information above from sources we believe to be reliable. However, we have not verified its accuracy and make no guarantee, warranty or representation about it. It is submitted subject to the possibility of errors, omissions, change of price, rental or other conditions, prior sale, lease or financing, or withdrawal without notice. We include projections, opinions, assumptions or estimates for example only, and they may not represent current or future performance of the property. You and your tax and legal advisors should conduct your own investigation of the property and transaction. Images are for illustrative purposes only and may include computer-generated renderings, virtual staging, or digital enhancements. Actual conditions, features, and finishes may vary and are subject to change without notice.

FOR SUBLEASE

7130 S 29TH ST, LINCOLN, NE 68516

Office | 750 SF | \$1,500.00 per month (Gross)

LEE & ASSOCIATES
COMMERCIAL REAL ESTATE SERVICES



CONTACT

Katy Martin

kmartin@lee-associates.com

C 402.617.8508

Jared Wegner

jwegner@lee-associates.com

C 308.627.2136

We obtained the information above from sources we believe to be reliable. However, we have not verified its accuracy and make no guarantee, warranty or representation about it. It is submitted subject to the possibility of errors, omissions, change of price, rental or other conditions, prior sale, lease or financing, or withdrawal without notice. We include projections, opinions, assumptions or estimates for example only, and they may not represent current or future performance of the property. You and your tax and legal advisors should conduct your own investigation of the property and transaction. Images are for illustrative purposes only and may include computer-generated renderings, virtual staging, or digital enhancements. Actual conditions, features, and finishes may vary and are subject to change without notice.

Omaha: 12020 Shamrock Plaza, Suite 333 | Omaha, NE 68154 | 531.721.2888

Lincoln: 200 South 21st Street, Suite A113 | Lincoln, NE 68510 | 531.721.2888



Office | 750 SF | \$1,500.00 per month (Gross)



**LEE &
ASSOCIATES**

COMMERCIAL REAL ESTATE SERVICES



VON MAUR®

maurices

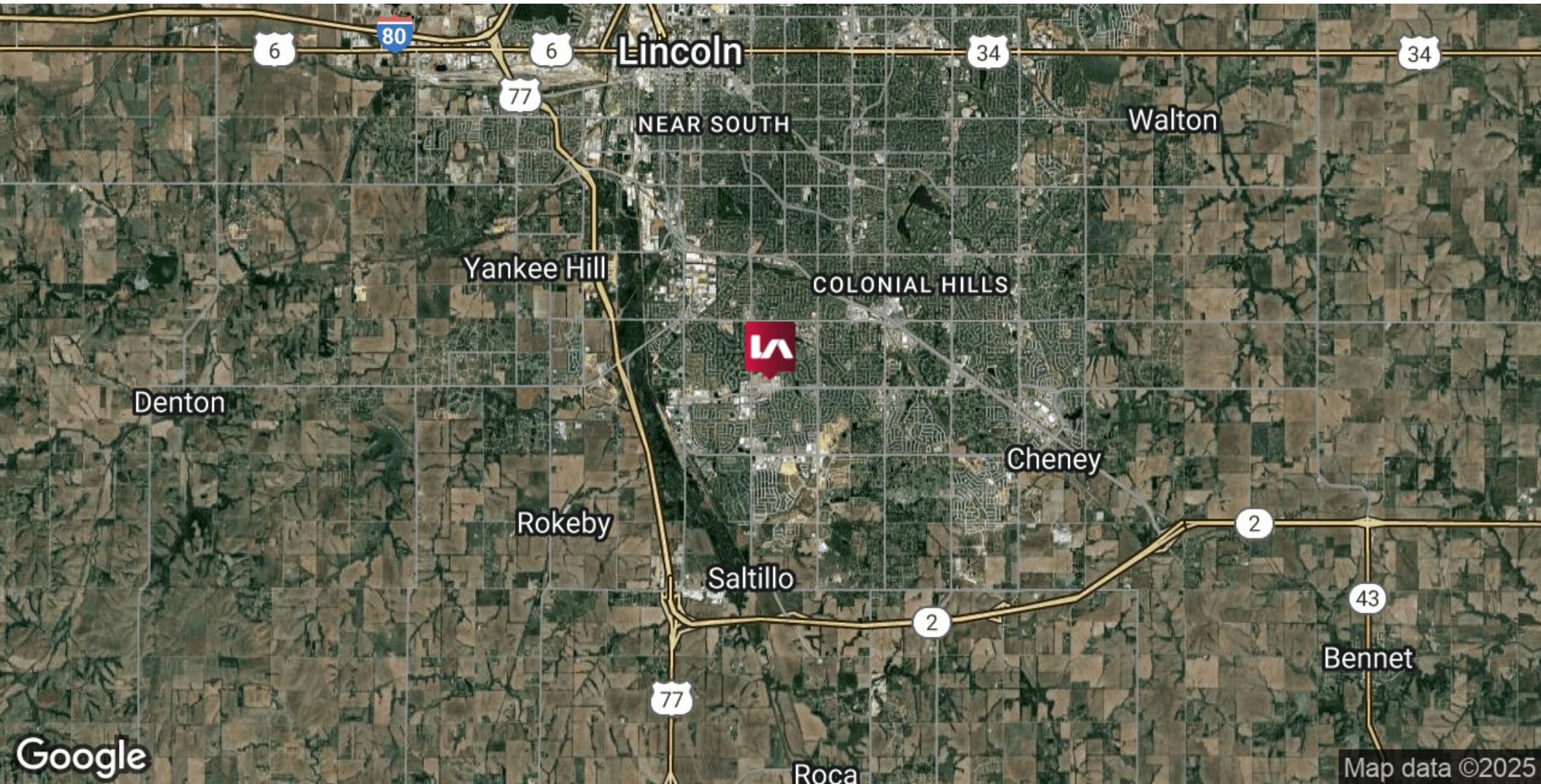


f  in

FOR SUBLEASE

7130 S 29TH ST, LINCOLN, NE 68516

Office | 750 SF | \$1,500.00 per month (Gross)



CONTACT

Katy Martin

kmartin@lee-associates.com

C 402.617.8508

Jared Wegner

jwegner@lee-associates.com

C 308.627.2136

We obtained the information above from sources we believe to be reliable. However, we have not verified its accuracy and make no guarantee, warranty or representation about it. It is submitted subject to the possibility of errors, omissions, change of price, rental or other conditions, prior sale, lease or financing, or withdrawal without notice. We include projections, opinions, assumptions or estimates for example only, and they may not represent current or future performance of the property. You and your tax and legal advisors should conduct your own investigation of the property and transaction. Images are for illustrative purposes only and may include computer-generated renderings, virtual staging, or digital enhancements. Actual conditions, features, and finishes may vary and are subject to change without notice.

Omaha: 12020 Shamrock Plaza, Suite 333 | Omaha, NE 68154 | 531.721.2888

Lincoln: 200 South 21st Street, Suite A113 | Lincoln, NE 68510 | 531.721.2888



FOR SUBLEASE

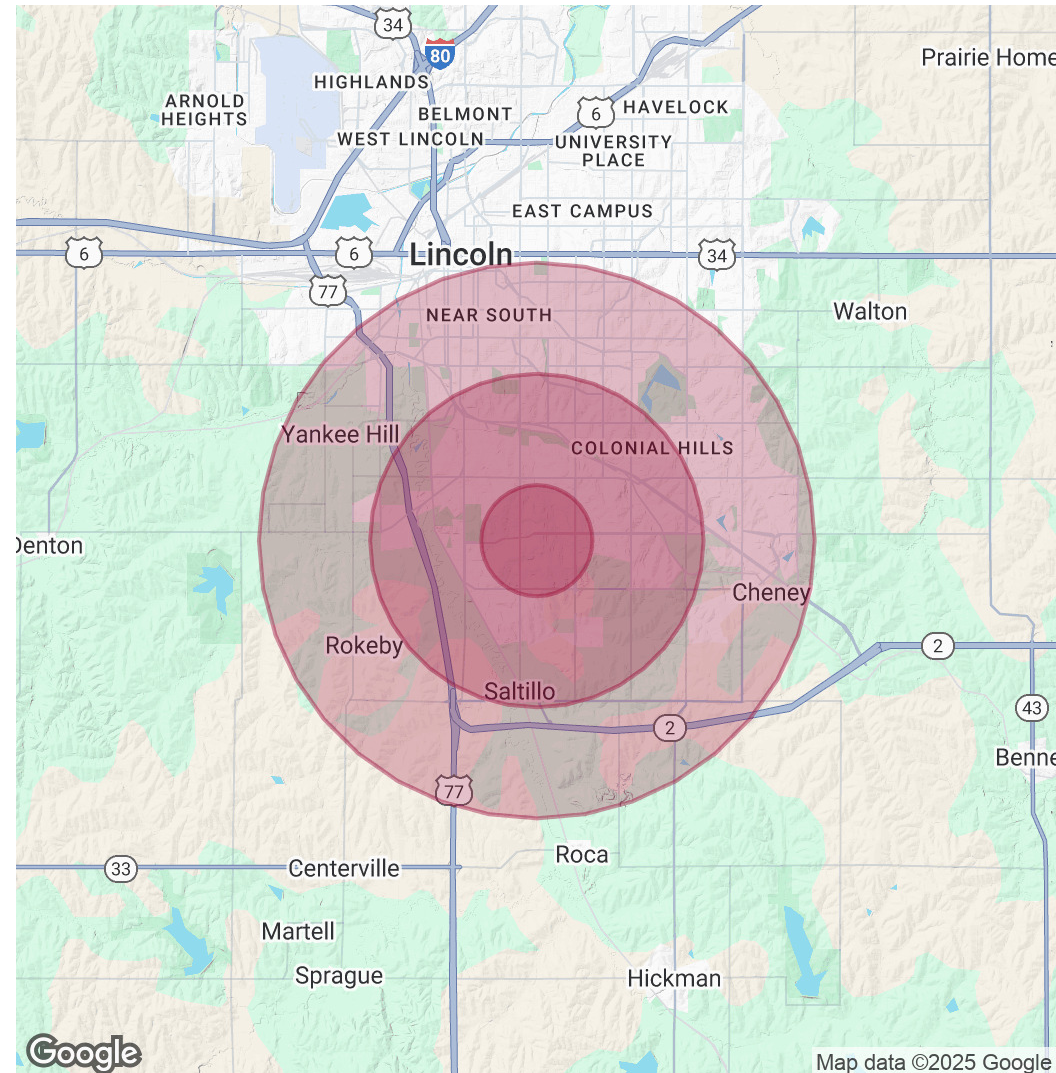
7130 S 29TH ST, LINCOLN, NE 68516

Office | 750 SF | \$1,500.00 per month (Gross)

POPULATION	1 MILE	3 MILES	5 MILES
Total Population	13,913	64,602	141,596
Average Age	41	40	40
Average Age (Male)	40	39	39
Average Age (Female)	42	40	41

HOUSEHOLDS & INCOME	1 MILE	3 MILES	5 MILES
Total Households	5,553	25,941	58,588
# of Persons per HH	2.5	2.5	2.4
Average HH Income	\$131,449	\$115,034	\$108,156
Average House Value	\$393,318	\$366,798	\$345,908

Demographics data derived from AlphaMap



CONTACT

Katy Martin

kmartin@lee-associates.com
C 402.617.8508

Jared Wegner

jwegner@lee-associates.com
C 308.627.2136

We obtained the information above from sources we believe to be reliable. However, we have not verified its accuracy and make no guarantee, warranty or representation about it. It is submitted subject to the possibility of errors, omissions, change of price, rental or other conditions, prior sale, lease or financing, or withdrawal without notice. We include projections, opinions, assumptions or estimates for example only, and they may not represent current or future performance of the property. You and your tax and legal advisors should conduct your own investigation of the property and transaction. Images are for illustrative purposes only and may include computer-generated renderings, virtual staging, or digital enhancements. Actual conditions, features, and finishes may vary and are subject to change without notice.