

1.26 ACRES HIGH PROFILE PAD SITE

220-228 W. Northwest Highway | Barrington, IL

Holly Estler
Associate Director
t 773-383-1457
holly.estler@nmrk.com

Larry Kling
managing Director
t 312-224-3199
larry.kling@nmrk.com

220-228 W. NORTHWEST HIGHWAY BARRINGTON IL

HIGHLIGHTS

- Ideal for drive thru restaurant
- Highly Visible site
- Great street access
- Located on busy Northwest Hwy
- Near major retail, schools, and park district

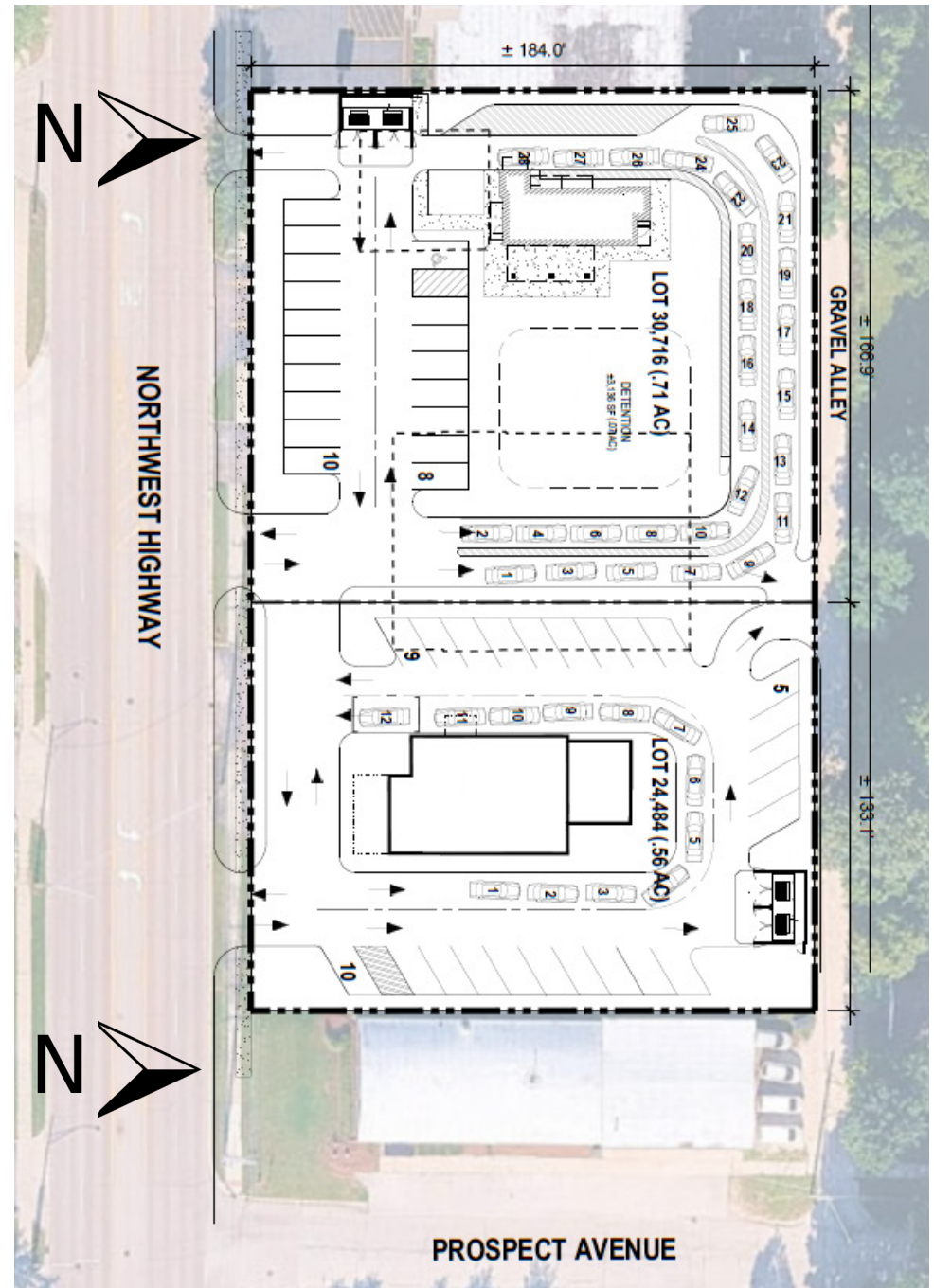
SPACE

APPROX. 1.26 ACRES

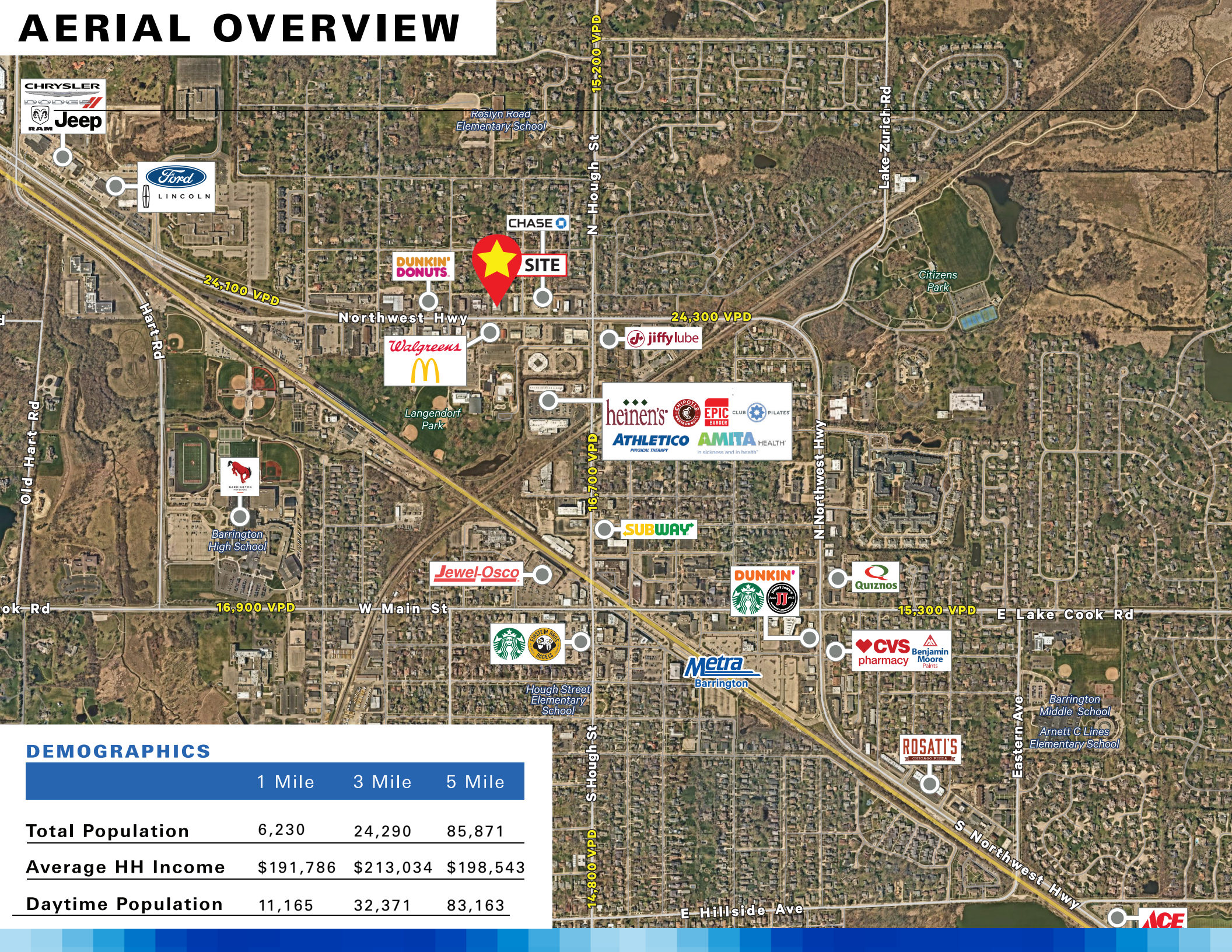
NEARBY RETAILERS



PILATES



AERIAL OVERVIEW



DEMOGRAPHICS

	1 Mile	3 Mile	5 Mile
Total Population	6,230	24,290	85,871
Average HH Income	\$191,786	\$213,034	\$198,543
Daytime Population	11,165	32,371	83,163

Holly Estler
Associate Director
t 773-383-1457
holly.estler@nmrk.com

Larry Kling
managing Director
t 312-224-3199
larry.kling@nmrk.com

500 West Monroe Street, Suite
2900
Chicago, IL 60661



Licensed as Newmark Midwest Region, LLC

The information contained herein has been obtained from sources deemed reliable but has not been verified and no guarantee, warranty or representation, either express or implied, is made with respect to such information. Terms of sale or lease and availability are subject to change or withdrawal without notice.

NEWMARK

nmrk.com