

FOR LEASE



MOUNTAIN WEST
COMMERCIAL REAL ESTATE

CODY BLACK

cblack@mwcre.com
direct 801.687.0094
[View Profile](#)

SHAD WEBB

swebb@mwcre.com
direct 435.459.0212
[View Profile](#)

ALIANZA

PROPERTY DETAILS

YOUR NAME HERE

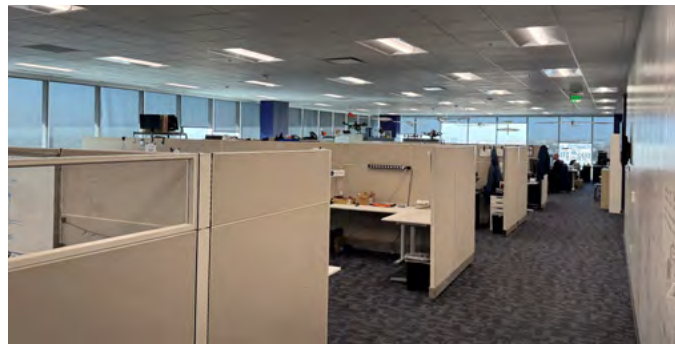
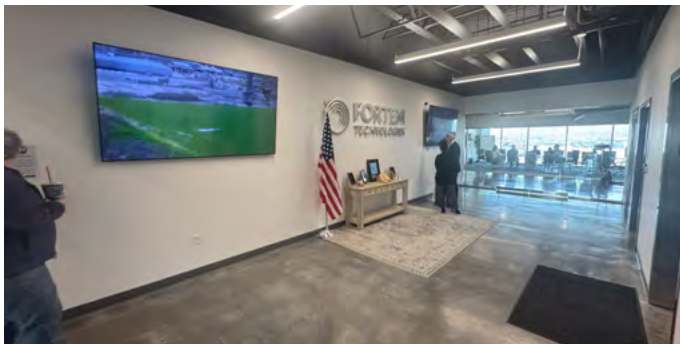
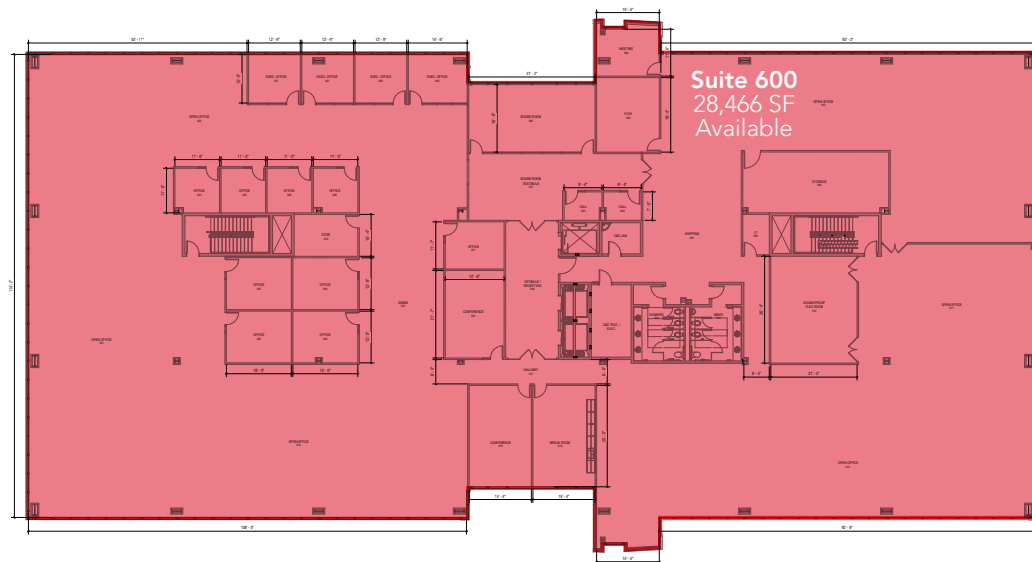
1064 SOUTH NORTH COUNTY BOULEVARD, PLEASANT GROVE, UTAH 84062

- Class A Corporate HQ Opportunity!
- Rare Entire Top Floor (6th) Available
- Suite 600: 28,466 SF
- Lease Rate: \$29.50/SF Full Service
- Crown Building Signage Available
- Unmatched Panoramic Views of the Valley
- Second Generation Office with Floor to Ceiling Glass
- Class A Office Amenities EV Charging Stations, Gym Facility, Showers, Lockers and Indoor Bike Storage
- Growth Accommodation with Over 1 Million SF of Office Planned

**FULL SERVICE
COMMERCIAL REAL ESTATE**

2015 West Grove Parkway, Suite J
Pleasant Grove, UT 84062
Office 385.233.9140
www.mwcre.com

6TH FLOOR



MOUNTAIN WEST
COMMERCIAL REAL ESTATE

CODY BLACK

cblack@mwcre.com
direct 801.687.0094
[View Profile](#)

SHAD WEBB

swebb@mwcre.com
direct 435.459.0212
[View Profile](#)

**FULL SERVICE
COMMERCIAL REAL ESTATE**

2015 West Grove Parkway, Suite J
Pleasant Grove, UT 84062
Office 385.233.9140
www.mwcre.com

SITE PLAN

VALLEY GROVE I



MOUNTAIN WEST
COMMERCIAL REAL ESTATE

CODY BLACK

cblack@mwcre.com

direct 801.687.0094

[View Profile](#)

SHAD WEBB

swebb@mwcre.com

direct 435.459.0212

[View Profile](#)



MOUNTAIN WEST
COMMERCIAL REAL ESTATE

CODY BLACK

cblack@mwcre.com
direct 801.687.0094

[View Profile](#)

SHAD WEBB

swebb@mwcre.com
direct 435.459.0212

[View Profile](#)

**FULL SERVICE
COMMERCIAL REAL ESTATE**

2015 West Grove Parkway, Suite J
Pleasant Grove, UT 84062

Office 385.233.9140

www.mwcre.com