

135 E MARTIN STREET

RALEIGH, NC 27601

OFFICE SPACE FOR LEASE



ELM

PARTNERS

/ LEASE DETAILS

5,489 SQUARE FEET
\$30 PSF FULL SERVICE

Second-floor office available in a renovated historic building at the corner of Martin and Blount Streets in Downtown Raleigh. The space features exposed brick, hardwood floors, high ceilings, and a kitchenette, with large windows providing natural light throughout.

/ HIGHLIGHTS

ADJACENT TO HISTORIC MOORE SQUARE + CITY MARKET.
BUILT IN 1910 WITH HISTORIC CHARM AND NATURAL LIGHT.
SURROUNDED BY ECLECTIC MIX OF RESTAURANTS,
GALLERIES, BOUTIQUES, NIGHTLIFE AND RESIDENCES
IN THE HEART OF DOWNTOWN RALEIGH.



135 E MARTIN STREET

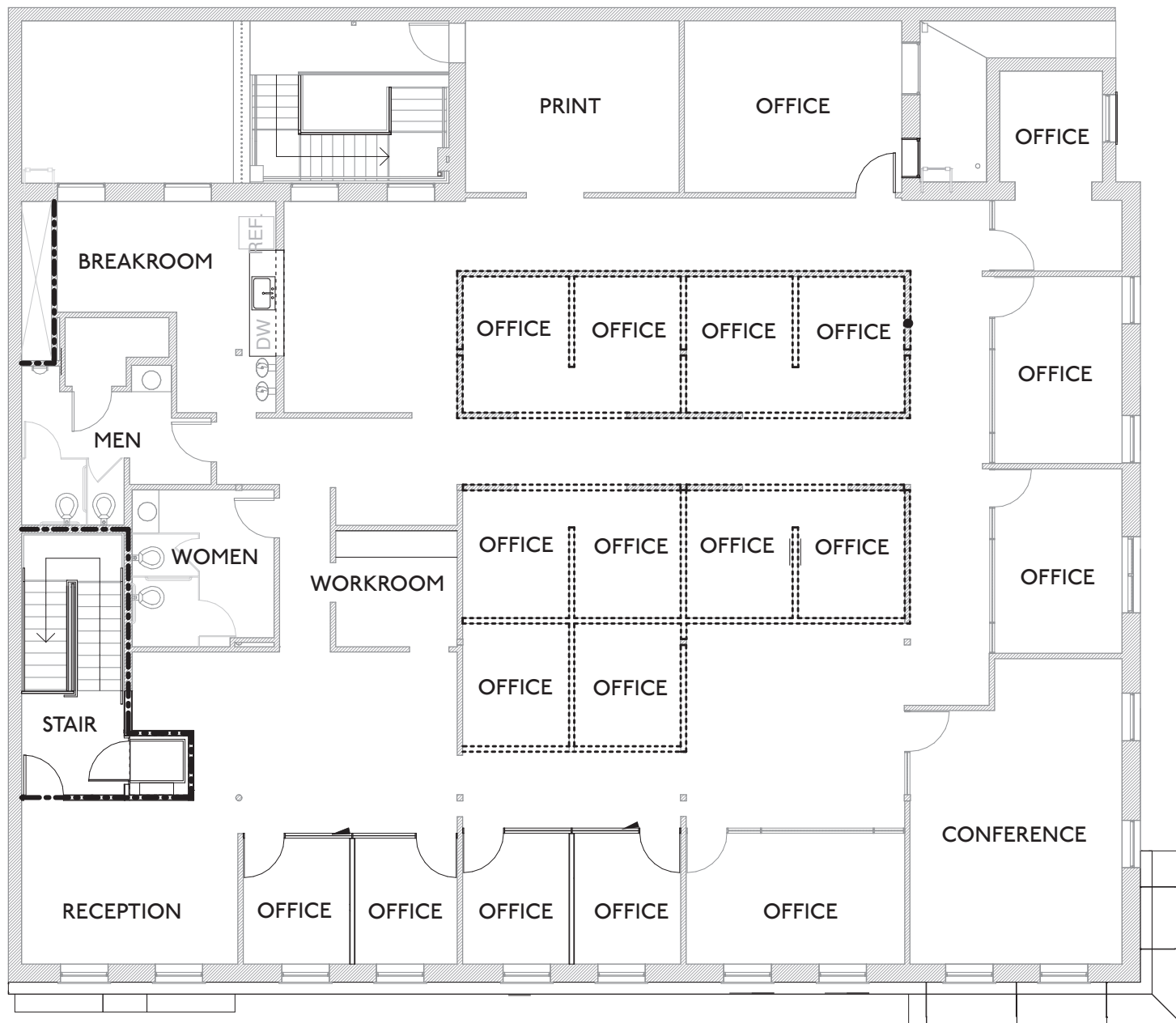


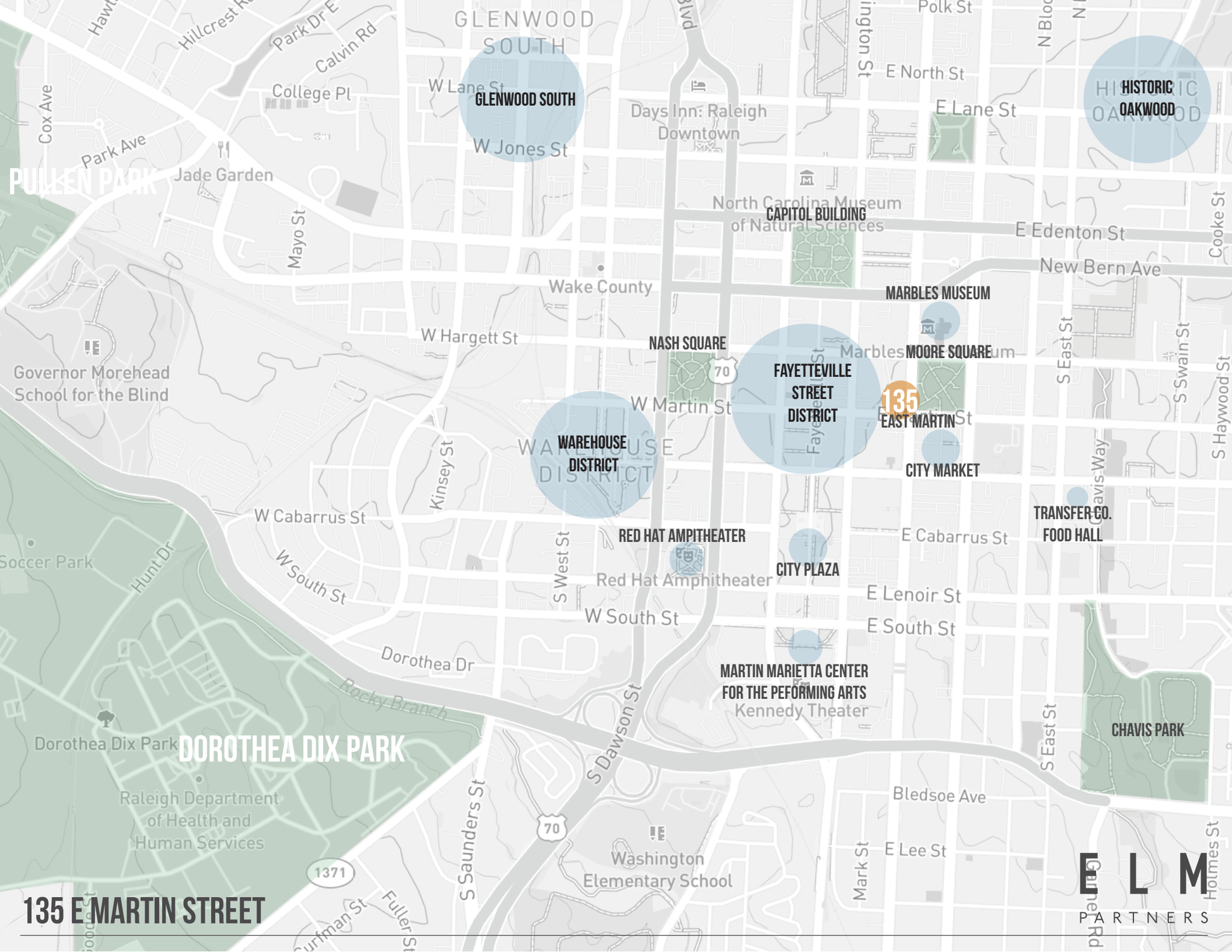
ELM
PARTNERS



135 E MARTIN STREET

ELM
PARTNERS





GLENWOOD SOUTH

HISTORIC OAKWOOD

CAPITOL BUILDING

MARBLER MUSEUM

NASH SQUARE

FAYETTEVILLE STREET DISTRICT

MOORE SQUARE

WAREHOUSE DISTRICT

CITY MARKET

TRANSFER CO. FOOD HALL

RED HAT AMPITHEATER

CITY PLAZA

**MARTIN MARIETTA CENTER FOR THE PERFORMING ARTS
Kennedy Theater**

CHAVIS PARK

DOROTHEA DIX PARK

135 E MARTIN STREET

ELM PARTNERS



HISTORY

"RALEIGH WAS FOUNDED IN 1792 AS N.C.'S CAPITAL CITY. IT WAS NAMED FOR SIR WALTER RALEIGH, WHO ATTEMPTED TO ESTABLISH THE FIRST ENGLISH COLONY ON THE SHORES OF THE NEW WORLD IN THE 1580'S. IT IS THE ONLY STATE CAPITAL TO HAVE BEEN PLANNED AND ESTABLISHED BY A STATE AS THE SEAT OF GOVERNMENT. THE CITY'S FOUNDING FATHERS CALLED RALEIGH THE "CITY OF OAKS" AND DEDICATED THEMSELVES TO MAINTAINING THE AREA'S WOODED TRACTS AND GRASSY PARKS.



NICK WILSON
MANAGING PARTNER
919-210-9130
NICK@ELM.PARTNERS

JEREMY DECKELBAUM
VICE PRESIDENT
919-830-8339
JEREMY@ELM.PARTNERS

RALEIGH RECOGNIZED

/ 2023

#3 BEST BUSINESS CLIMATES (LARGE) IN THE US
-BUSINESS FACILITIES

/ 2022

#2 THE SOUTH'S BEST CITIES ON THE RISE
-SOUTHERN LIVING

/ 2022

#2 SPOT IN THE US TO BE A REMOTE WORKER
-TRIANGLE BUSINESS JOURNAL

/ 2022

#3 AMERICA'S HAPPIEST CITIES
-MEN'S HEALTH

/ 2022

#3 STEM JOB GROWTH INDEX
-RCLCO

/ 2022

#4 50 BEST PLACES TO LIVE IN THE US
-MONEY

ELM
PARTNERS