

4037 TAYLOR ROAD

Chesapeake, VA 23321

POPLAR HILL MEDICAL CENTER | SUITE B - 2,040 SF



Nicole Campbell, Vice President | nicole.campbell@thalhimer.com | 757 499 0783

Rob Wright, Senior Vice President | rob.wright@thalhimer.com | 757 499 2896



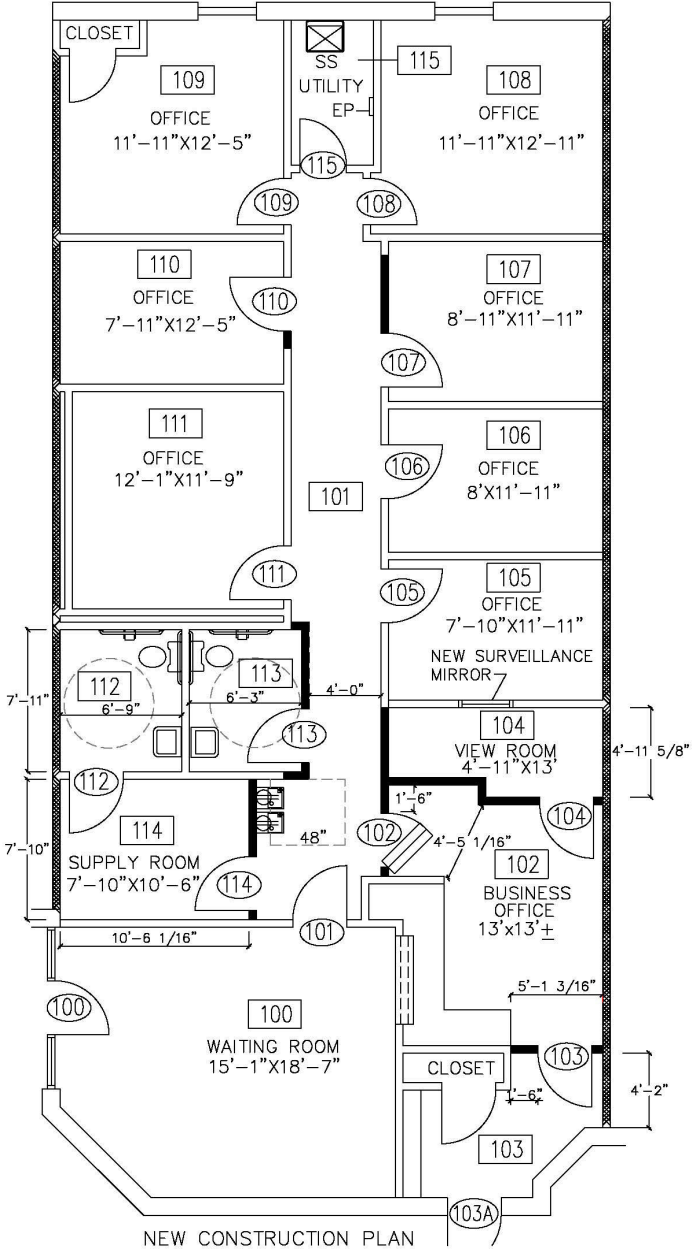
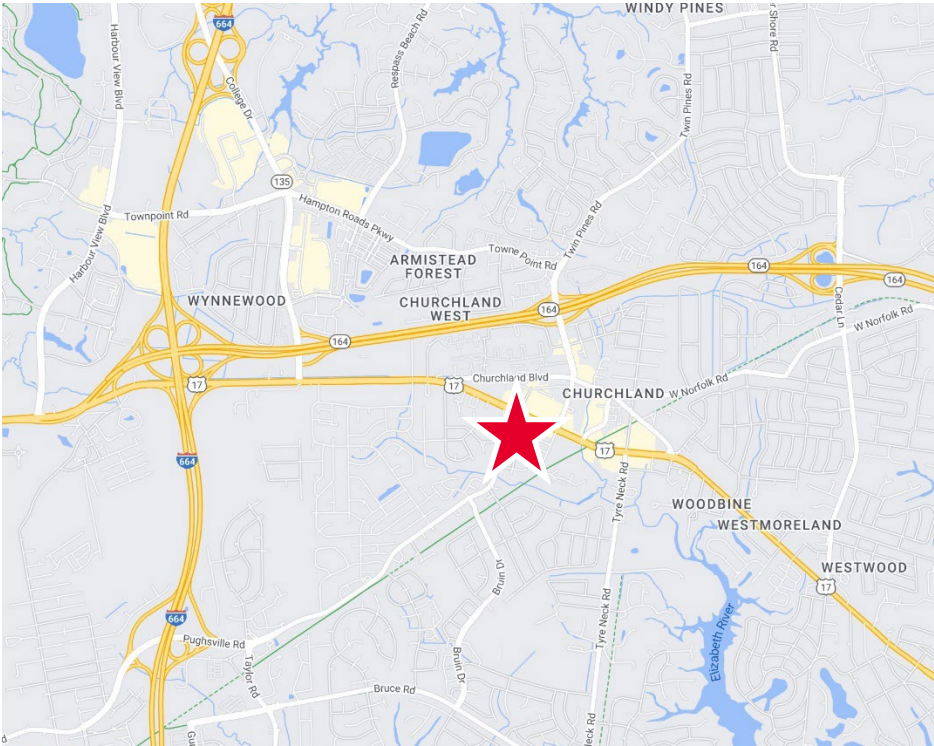
4037 TAYLOR ROAD

Chesapeake, VA 23321

POPLAR HILL MEDICAL CENTER | SUITE B - 2,040 SF

PROPERTY FEATURES

- 11,410 SF one-story, class B medical office building
- +2,040 SF available 3/1/2025
- Zoned R8S
- Ample parking
- Minutes from I-664 in the Western Branch submarket
- Lease Rate - \$17.00 SF, Net of electric/janitorial





Independently Owned and Operated / A Member of the Cushman & Wakefield Alliance

Cushman & Wakefield | Thalhimer © 2025. No warranty or representation, express or implied, is made to the accuracy or completeness of the information contained herein, and same is submitted subject to errors, omissions, change of price, rental or other conditions, withdrawal without notice, and to any special listing conditions imposed by the property owner(s). As applicable, we make no representation as to the condition of the property (or properties) in question.