

The Headquarters At Seaport

780 W HARBOR DR, DOWNTOWN SAN DIEGO, CA

RI



DOWNTOWN

The Headquarters At Seaport



DOWNTOWN

The Tenants

The Headquarters at Seaport brings together a select group of retailers and restaurants and arranges them in a setting of vibrant spaces.



ROMA NORTE



EDDIE V'S



THE HEADQUARTERS AT SEAPORT

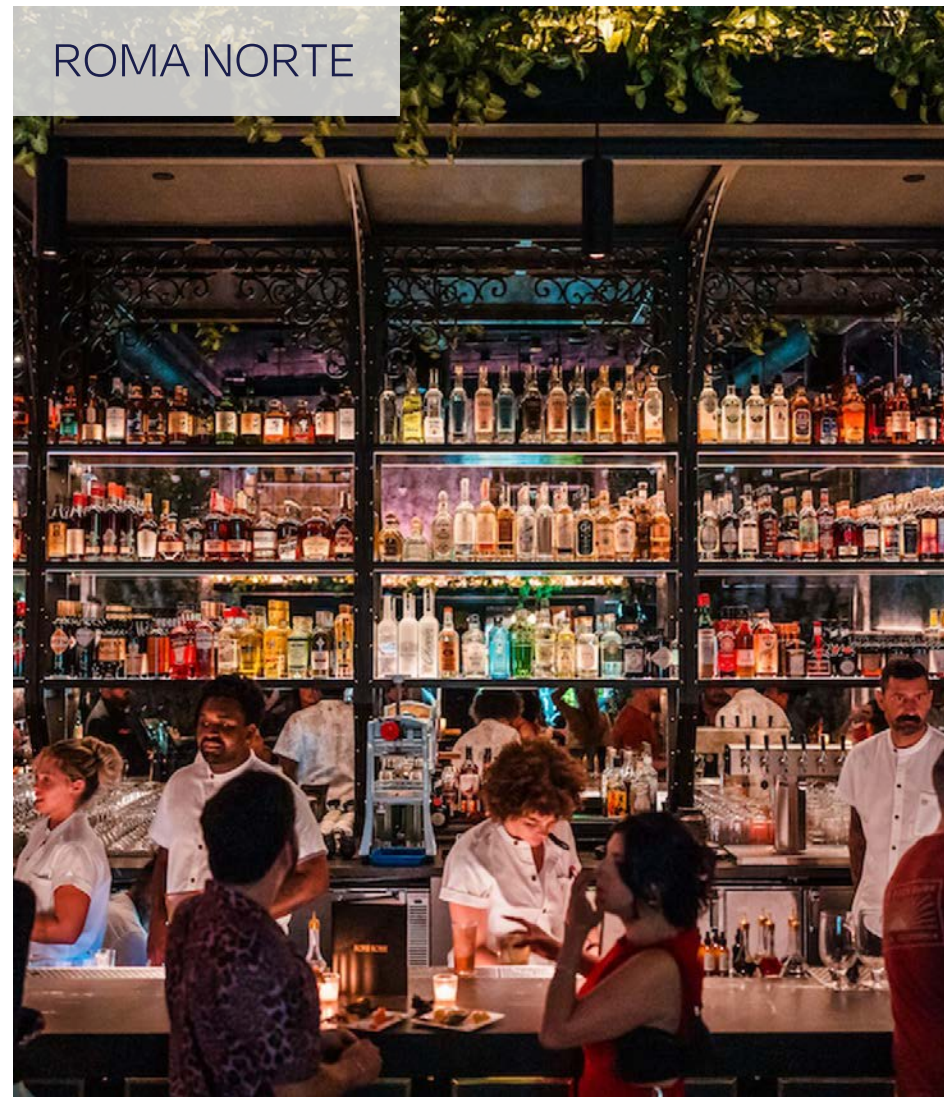
THE CHEESECAKE FACTORY



PUESTO



ROMA NORTE



GALPÃO GAUCHO



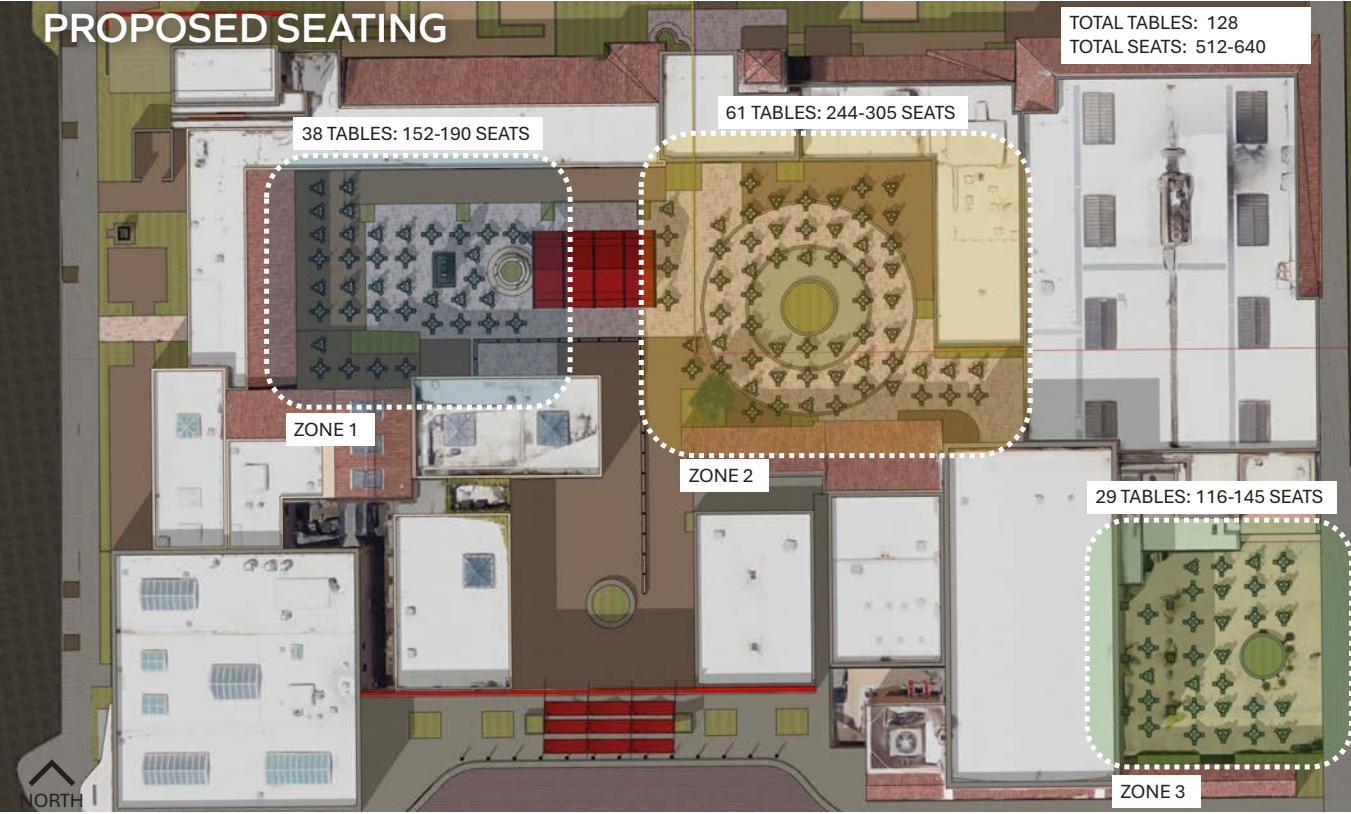
DOWNTOWN

Courtyard Vision

DINE • KIOSK • LANDSCAPE



PROPOSED SEATING



Downtown San Diego Waterfront



PORTSIDE PIER

LITTLE ITALY

RaDD

BALBOA PARK

MARINA DISTRICT

CIVIC CORE

Gaslamp Quarter

petco park

SAN DIEGO
convention center

The Headquarters
At Seaport

 **The Rady Shell
at Jacobs Park**

Merchandising Vision

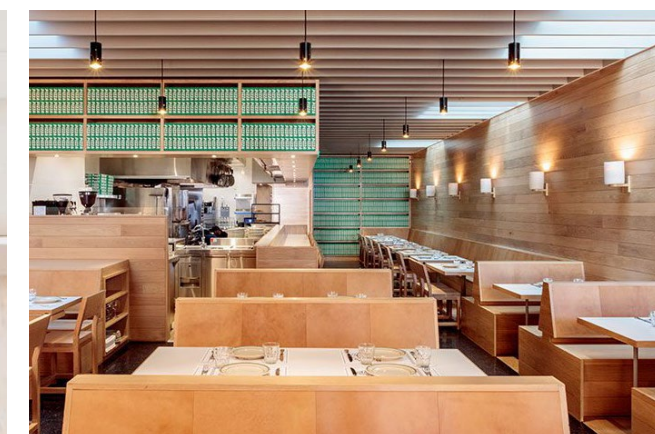
The current Downtown waterfront has an opportunity to create a curated hub that marries chef driven dining, craft beverage, coastal lifestyle retail, and “only in San Diego” experiences under one historic roofline. Visitors pour in from the Convention Center, cruise ships, Petco Park, and over 12,000 nearby hotel rooms, creating an opportunity for The Headquarters at Seaport.

Residents and office/life science workers are craving authentic, walkable spots for power lunches, post game hangs, wellness fixes, and weekend brunch with a view. Brands want story-rich, character space with patios, visibility, and all-day traffic.

The Headquarters at Seaport is the place to elevate that mix—leveraging its iconic architecture, courtyards, and waterfront adjacency to curate:

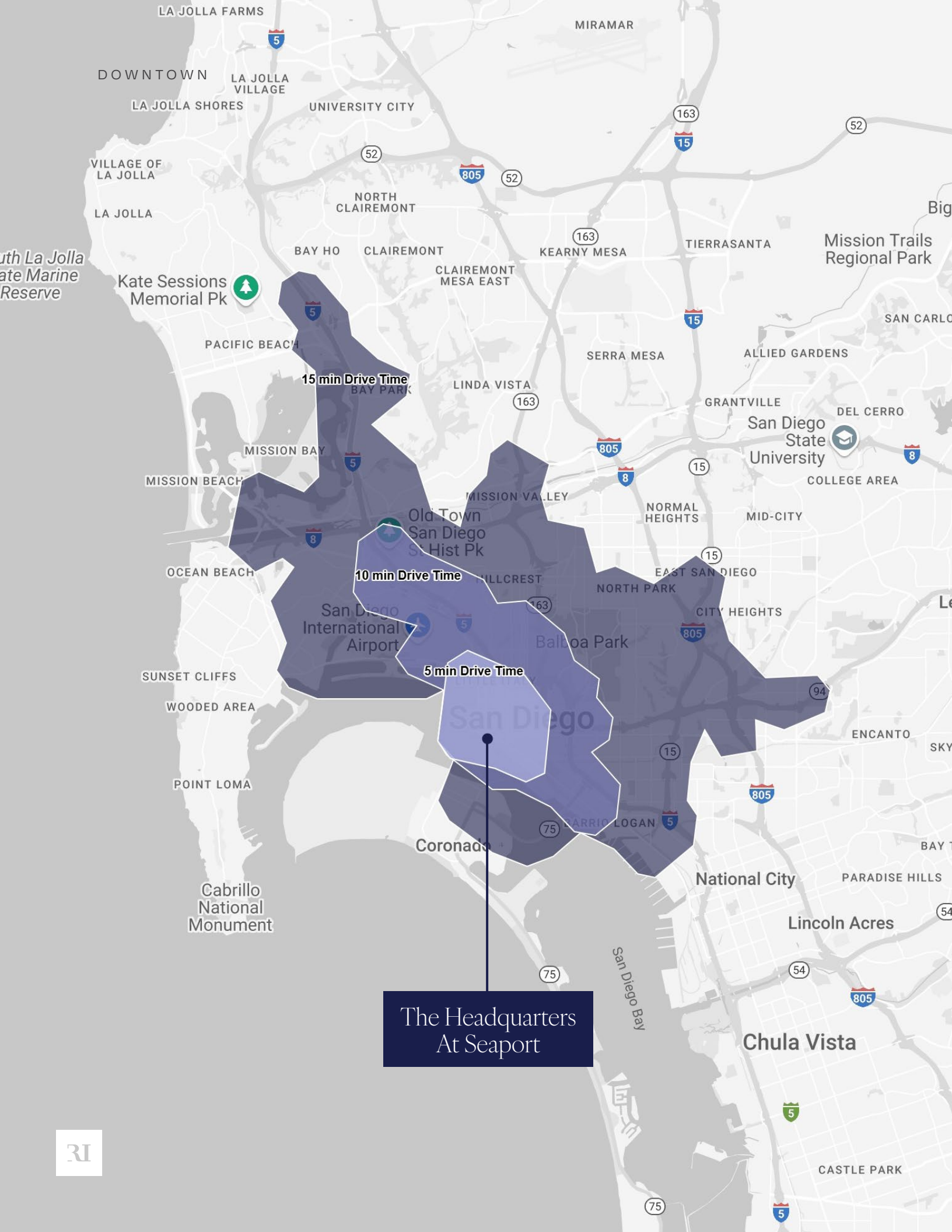
- Signature & celebrity-chef restaurants
- Craft cocktail / tasting rooms & dessert bars
- Coastal lifestyle + athleisure retail
- Wellness, recovery, & boutique fitness concepts
- Experiential/artisanal makers and pop-ups

This is the opportunity to transform a beloved landmark into San Diego’s definitive waterfront gathering place that is equally magnetic to both locals and travelers.



Area Demographics

// DOWNTOWN SAN DIEGO, CA



	5 MINUTES	10 MINUTES	15 MINUTES
--	-----------	------------	------------

Total Population	39,237	96,199	273,966
Projected Population (2030)	43,236	105,299	285,178
Total Employees	63,129	100,191	184,336
Average Household Income	\$143,535	\$136,218	\$136,075
Median Household Income	\$117,928	\$106,466	\$105,547
Total Households	23,727	48,666	123,011
Median Age	41.3	38.4	36.7

\$1M

average home value within a 15 minute drive

60.4%

% of population within a 5 minute drive has earned a BA degree or higher

458K

total trade area population within 15 minute drive

The Headquarters At Seaport

The information above has been obtained from sources believed to be reliable. While we do not doubt its accuracy, we have not verified it and make no guarantee, warranty or representation about it. It is your responsibility to independently confirm its accuracy and completeness. Any projections, opinions, assumptions or estimates used are for example only and do not represent the current or future performance of the property.

Find Yourself Here

TENANT ROSTER



Unit	Tenant	SF
110	Available (Restaurant)	4,343
113	Hi Poke	833
114	Available	696
115	Available	757
116	Sunglass Hut	742
117	Available	760
118	Available	1,204
121	Available	307
122	Dorothy's Wine Bar	340
124	Walter Redondo Fine Art Collection	1,913
127	Available	1,280
132	The Cheesecake Factory	9,779
134	Galpao Gaucho Brazilian Steakhouse	10,031
142	Cali Strong	2,472
144	Available	1,168
146	Available	1,739
148	Wedgewood Weddings	14,400
151	Available (Restaurant)	2,082
152	Perfume Gallery	891
154	Seaport Nails & Spa	1,511
155-156	Puesto/Roma Norte	6,023
158	Eddie V's	7,512
159	Starbucks	1,295

The Headquarters at Seaport

Allison Campbell LIC #02072308
858.524.3266 | acampbell@riretail.com

RI RETAIL INSITE

405 S Hwy 101, Ste 150, Solana Beach, CA 92075
lic . 01206760 t. 858 523 2090 w. riretail.com

The information above has been obtained from sources believed to be reliable. While we do not doubt its accuracy, we have not verified it and make no guarantee, warranty, or representation about it. It is your responsibility to independently confirm its accuracy and completeness. Any projections, opinions, assumptions, or estimates used are for example only and do not represent the current or future performance of the property. The value of this transaction to you depends on tax and other factors which should be evaluated by your tax, financial, and legal advisors. You and your advisors should conduct a careful, independent investigation of the property to determine to your satisfaction the suitability of the property for your needs. Photos herein are the property of their respective owners and use of these images without the express written consent of the owner is prohibited.

