

East 14th Street

3802/3806/3810 E 14th
Des Moines, IA 50313
www.cbre.com/desmoines

Development Site

Office, Retail, or multi-family development site consisting of four parcels (1.364 acres) on the NW corner of E 14th Street and East Douglas Avenue. Located across from B-Bops and Advance Auto Parts. Also located just north of Family Dollar.

Lot Size

+ 1.364 Acres

Asking Price

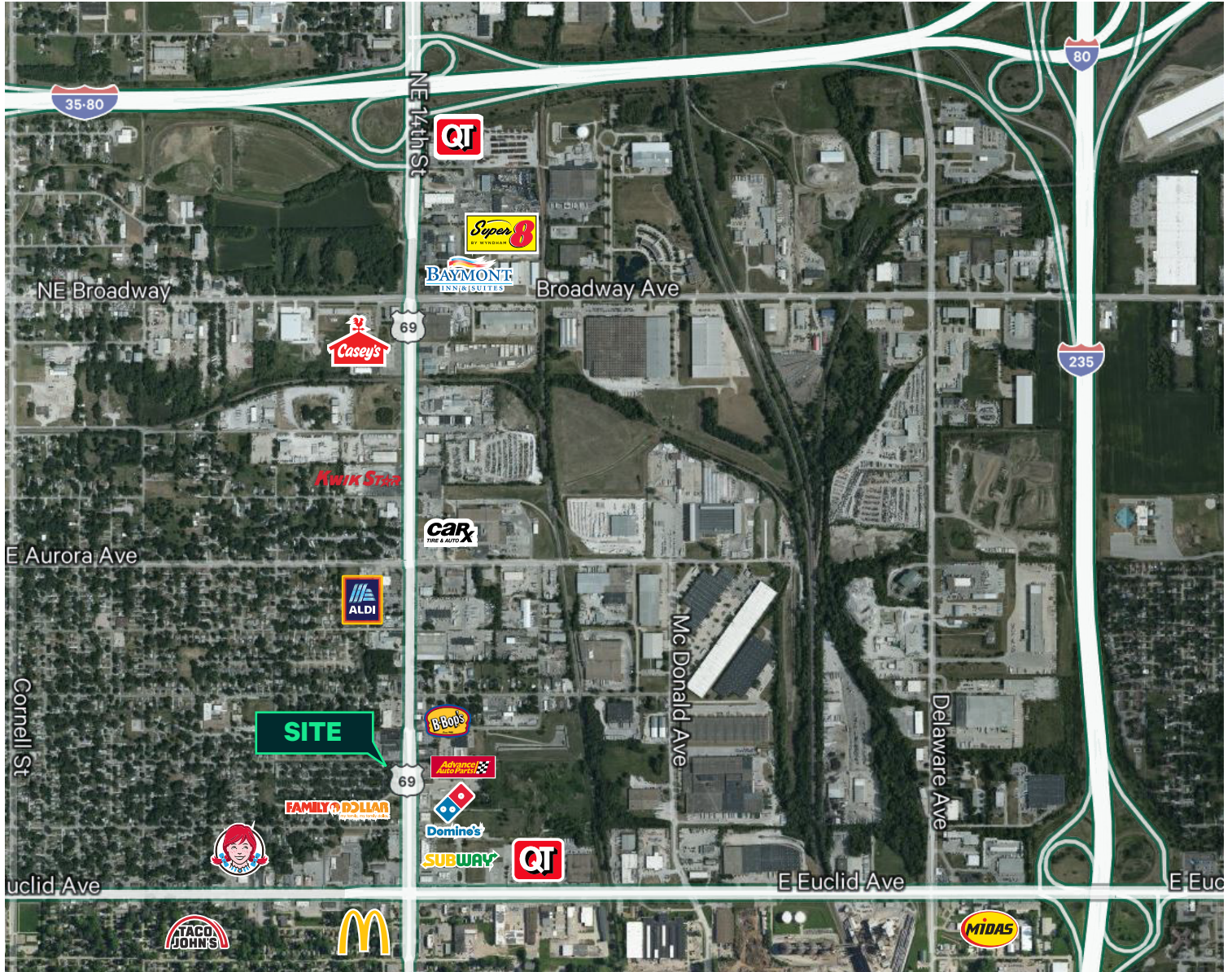
+ \$549,000

Property Features

- + Zoned: N3A (Neighborhood) & MX3-V (Mixed Use)
- + Improvements include 2-BDR single family house and two commercial buildings (2,430 SF + 480 SF)
- + Approximately 285' frontage on E 14th Street
- + 1.33 miles south of I-35/80 interchange and one block north of East Euclid Avenue
- + 18,200 vehicles per day - E 14th Street



Location



Contact Us

Bill Wright

Senior Vice President
+1 515 210 3050
bill.wright2@cbre.com
Licensed in the State of Iowa.

Chris Pendroy, CCIM, SIOR

Senior Vice President
+1 515 402 6600
chris.pendroy@cbre.com
Licensed in the State of Iowa.

Grant Wright, CCIM

First Vice President
+1 515 745 5113
grant.wright@cbre.com
Licensed in the State of Iowa.

Dakota Little

Sales Associate
+1 515 745 4378
dakota.little@cbre.com
Licensed in the State of Iowa.

© 2024 CBRE, Inc. All rights reserved. This information has been obtained from sources believed reliable, but has not been verified for accuracy or completeness. You should conduct a careful, independent investigation of the property and verify all information. Any reliance on this information is solely at your own risk. CBRE and the CBRE logo are service marks of CBRE, Inc. All other marks displayed on this document are the property of their respective owners, and the use of such logos does not imply any affiliation with or endorsement of CBRE. Photos herein are the property of their respective owners. Use of these images without the express written consent of the owner is prohibited.