



2023 DEMOGRAPHICS

10 Miles | 15 Miles | 20 Miles



Population

16,726 | 26,074 | 41,148



Daytime Population

11,470 | 17,459 | 26,666



Median Household Income

\$62,170 | \$62,850 | \$64,721

RETAIL FOR LEASE

Perryville Crossing | 2015-2021 Jefferson Street | Perryville, Missouri 63775

1,554 SF | Call for Details | Triple Nets: \$2.75/SF

PROPERTY DETAILS

High-profile endcap available

Walmart shadow-anchored center

Conveniently located off Interstate 55

Connor Wiemann

314.785.7627

cwiemann@paceproperties.com

Evan Barnett

314.785.7678

ebarnett@paceproperties.com

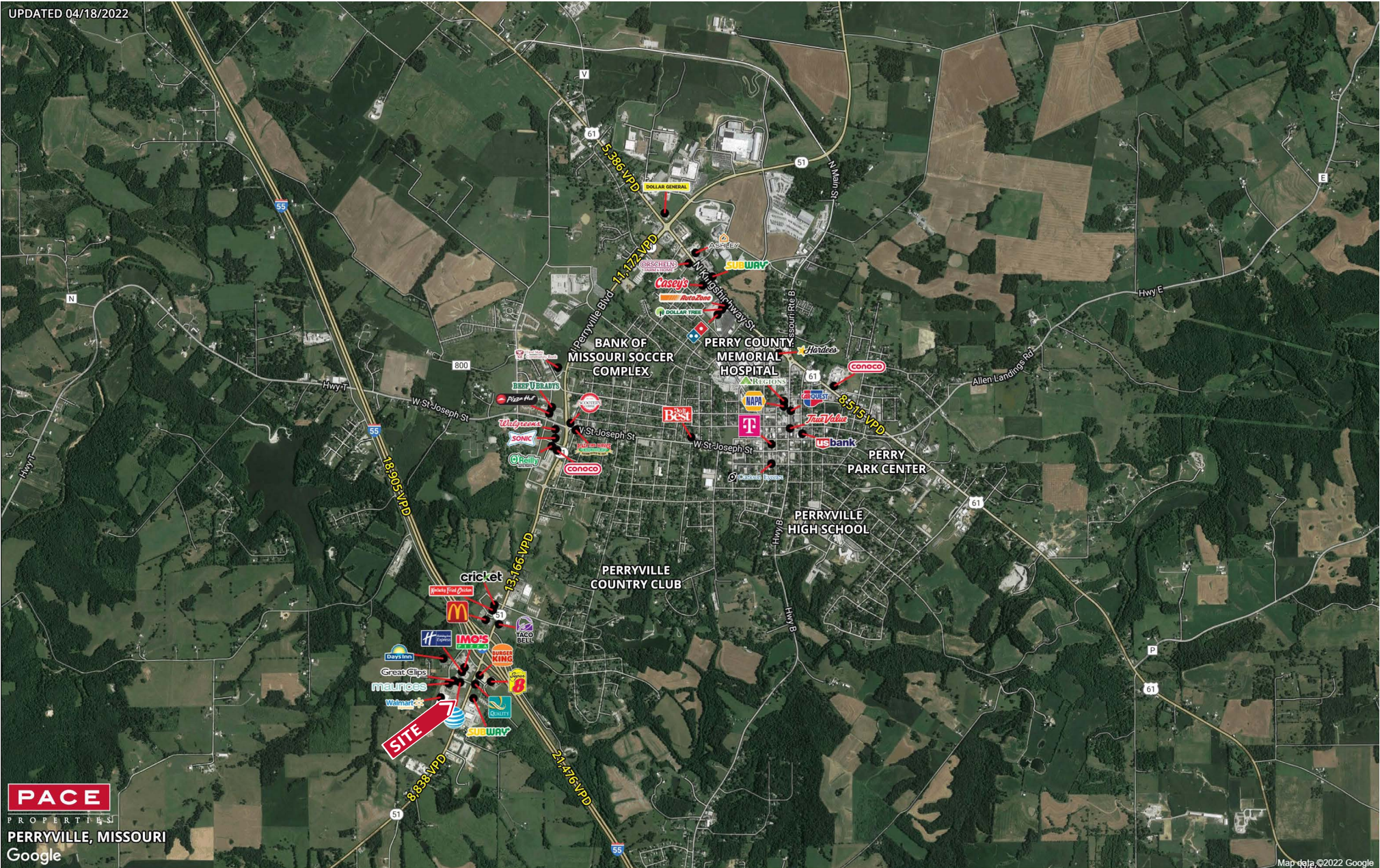
PACEPROPERTIES.COM | 314.968.9898

1401 South Brentwood Boulevard, Suite 900 | St. Louis, Missouri 63144

The information contained herein is not warranted, although it has been obtained from the owner/landlord of the subject property or from other sources that Pace Properties, Inc. deems reliable, and is subject to change without notice. Owner/landlord and Pace Properties, Inc. make no representations as to the environmental condition of the subject property and recommend tenant's independent investigation.

Trade Area Aerial

UPDATED 04/18/2022



PACEPROPERTIES.COM | 314.968.9898

1401 South Brentwood Boulevard, Suite 900 | St. Louis, Missouri 63144

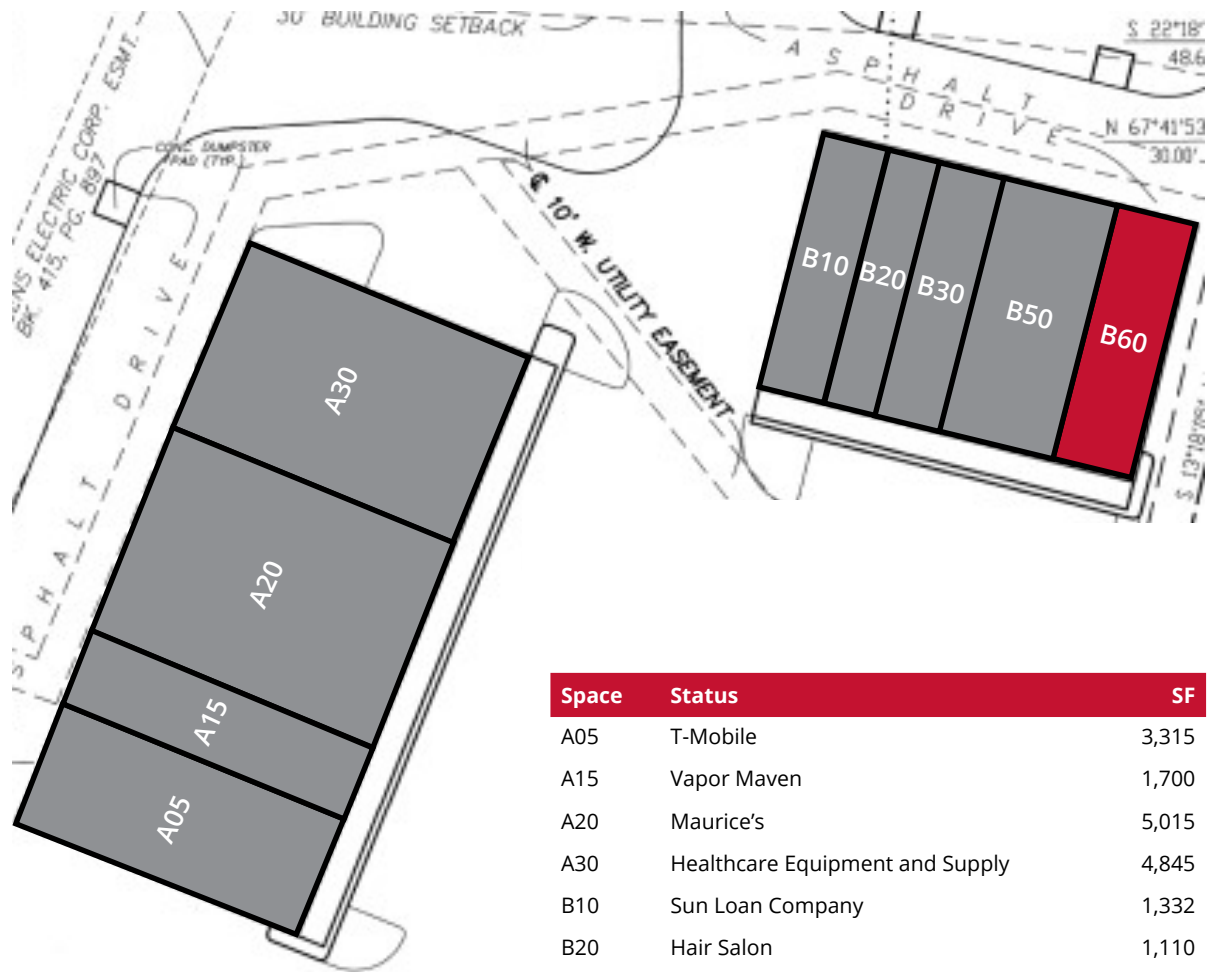
The information contained herein is not warranted, although it has been obtained from the owner/landlord of the subject property or from other sources that Pace Properties, Inc. deems reliable, and is subject to change without notice. Owner/landlord and Pace Properties, Inc. make no representations as to the environmental condition of the subject property and recommend tenant's independent investigation.

Site Plan

Building A



Building B



Space	Status	SF
A05	T-Mobile	3,315
A15	Vapor Maven	1,700
A20	Maurice's	5,015
A30	Healthcare Equipment and Supply	4,845
B10	Sun Loan Company	1,332
B20	Hair Salon	1,110
B30	Five Star Chinese Restaurant	1,332
B50	Star Nail & Spa	2,664
B60	AVAILABLE	1,554

The information contained herein is not warranted, although it has been obtained from the owner/landlord of the subject property or from other sources that Pace Properties, Inc. deems reliable, and is subject to change without notice. Owner/landlord and Pace Properties, Inc. make no representations as to the environmental condition of the subject property and recommend tenant's independent investigation.