



Tarpon River Plaza

500 SE 15th St, Fort Lauderdale, FL 33316



Jamie Manburg

RightStreet Inc.

515 E Las Olas Blvd, Suite 120, Fort Lauderdale, FL 33303

jmanburg@gmail.com

(954) 804-0860



Tarpon River Plaza

\$29.00 /SF/YR

Impress your clients with this Mediterranean design executive office suite with premier front exposure in the heart of Fort Lauderdale. Located on the ground level of the Tarpon River Plaza building featuring 1428 square feet including three private offices, a conference room, staff kitchen, a receptionist waiting area, storage room, and an ADA compliant bathroom. No expense spared with this turnkey office & completely move-in ready with newly painted walls and carpet flooring. Includes top-of-the-line technical infrastructure, reputable ownership, and a variety of tenant services with on-site parking and convenient access to I-595, I-95, and one block west of US1. Zoned for Office of Medical use....

- Premier front exposure in the heart of Fort Lauderdale
- Including three private offices, a conference room, staff kitchen, a receptionist waiting area, storage room, and an ADA compliant bathroom
- Convenient access to I-595, I-95, and one block west of US1. Zoned for Office use.

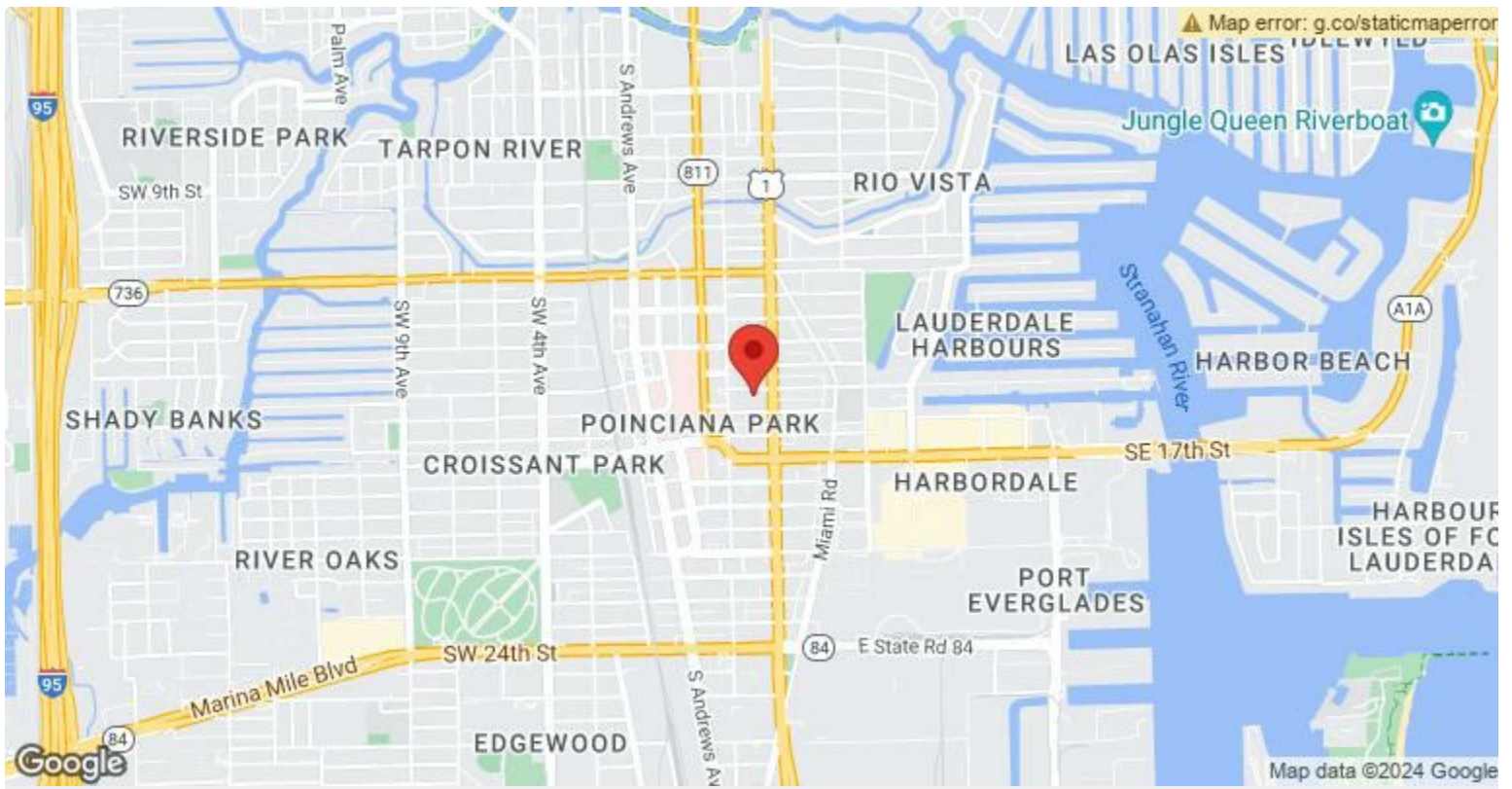


Rental Rate:	\$29.00 /SF/YR
Property Type:	Office
Property Subtype:	Medical
Building Class:	B
Rentable Building Area:	8,522 SF
Year Built:	2002
Walk Score ®:	90 (Walker's Paradise)
Transit Score ®:	41 (Some Transit)
Rental Rate Mo:	\$2.42 /SF/MO

1st Floor Ste 106

Space Available	1,428 SF
Rental Rate	\$29.00 /SF/YR
Date Available	September 01, 2024
Service Type	Triple Net (NNN)
Built Out As	Standard Office
Space Type	New
Space Use	Office
Lease Term	3 - 5 Years

Impress your clients with this Mediterranean design executive office suite with premier front exposure in the heart of Fort Lauderdale. Located on the ground level of the Tarpon River Plaza building featuring 1428 square feet including three private offices, a conference room, staff kitchen, a receptionist waiting area, storage room, and an ADA compliant bathroom. No expense spared with this turnkey office & completely move-in ready with newly painted walls and carpet flooring. Includes top-of-the-line technical infrastructure, reputable ownership, and a variety of tenant services with on-site parking and convenient access to I-595, I-95, and one block west of US1. Zoned for Office or Medical use.



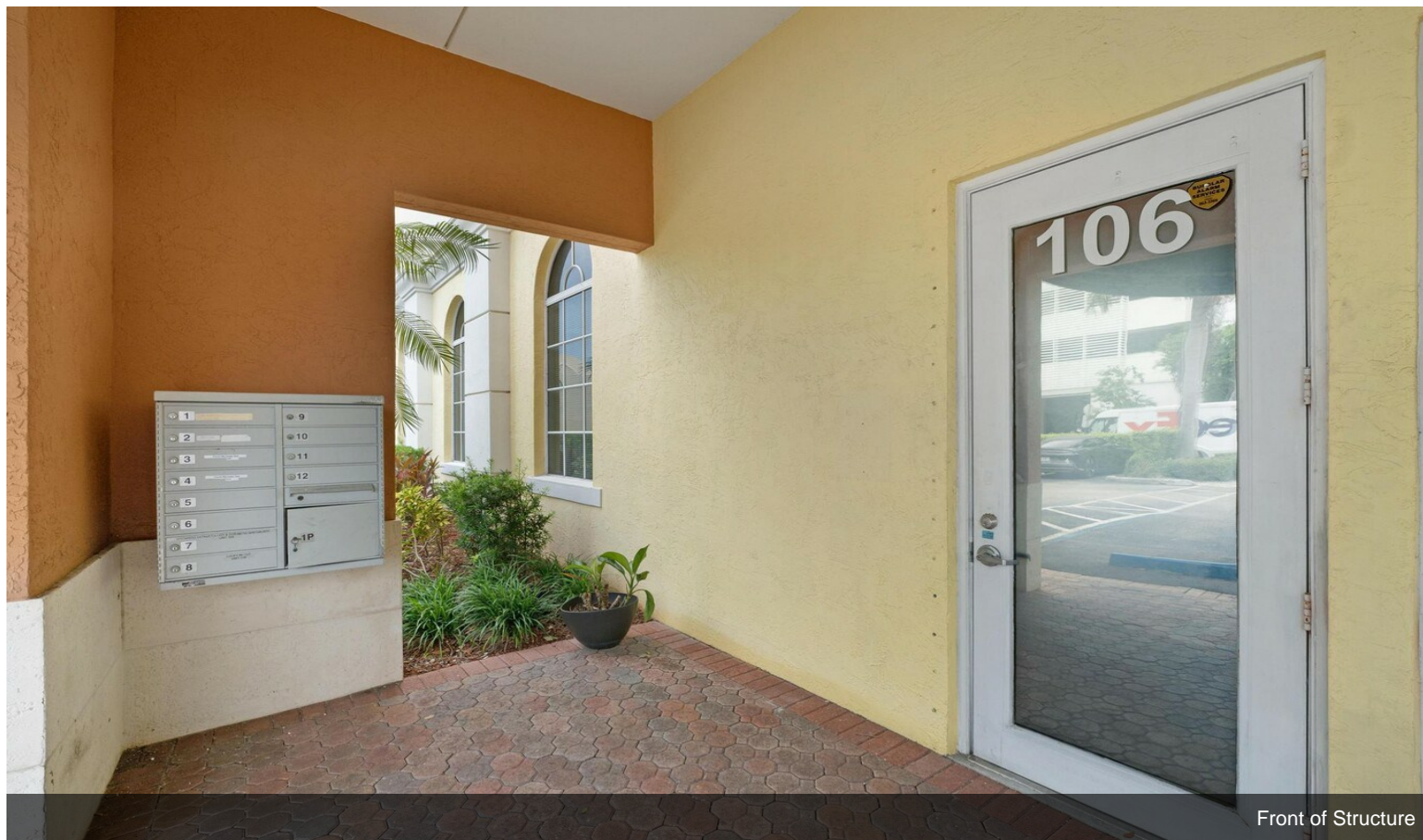
500 SE 15th St, Fort Lauderdale, FL 33316

Impress your clients with this Mediterranean design executive office suite with premier front exposure in the heart of Fort Lauderdale. Located on the ground level of the Tarpon River Plaza building featuring 1428 square feet including three private offices, a conference room, staff kitchen, a receptionist waiting area, storage room, and an ADA compliant bathroom. No expense spared with this turnkey office & completely move-in ready with newly painted walls and carpet flooring. Includes top-of-the-line technical infrastructure, reputable ownership, and a variety of tenant services with on-site parking and convenient access to I-595, I-95, and one block west of US1. Zoned for Office of Medical use.

Property Photos

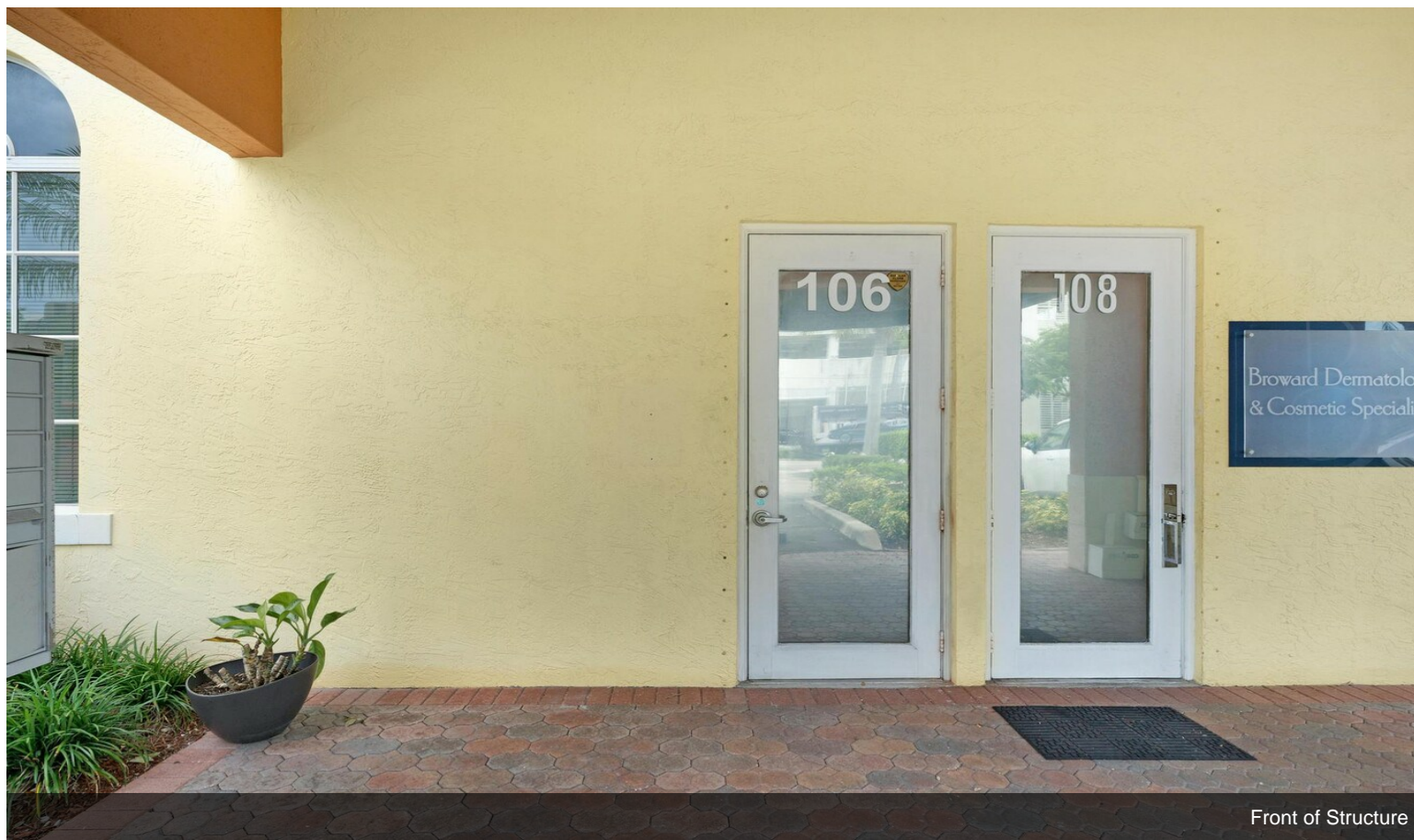


Front of Structure

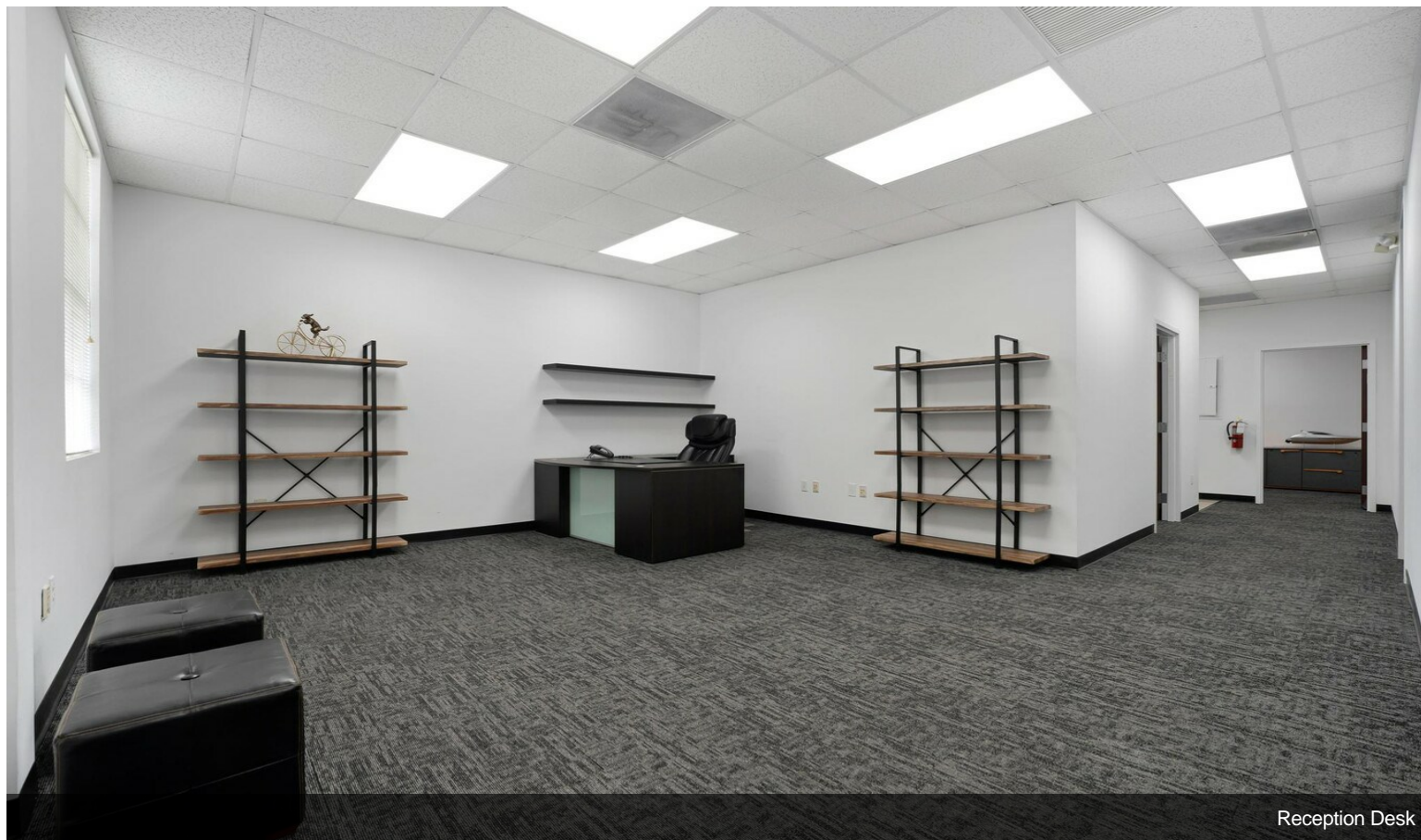


Front of Structure

Property Photos

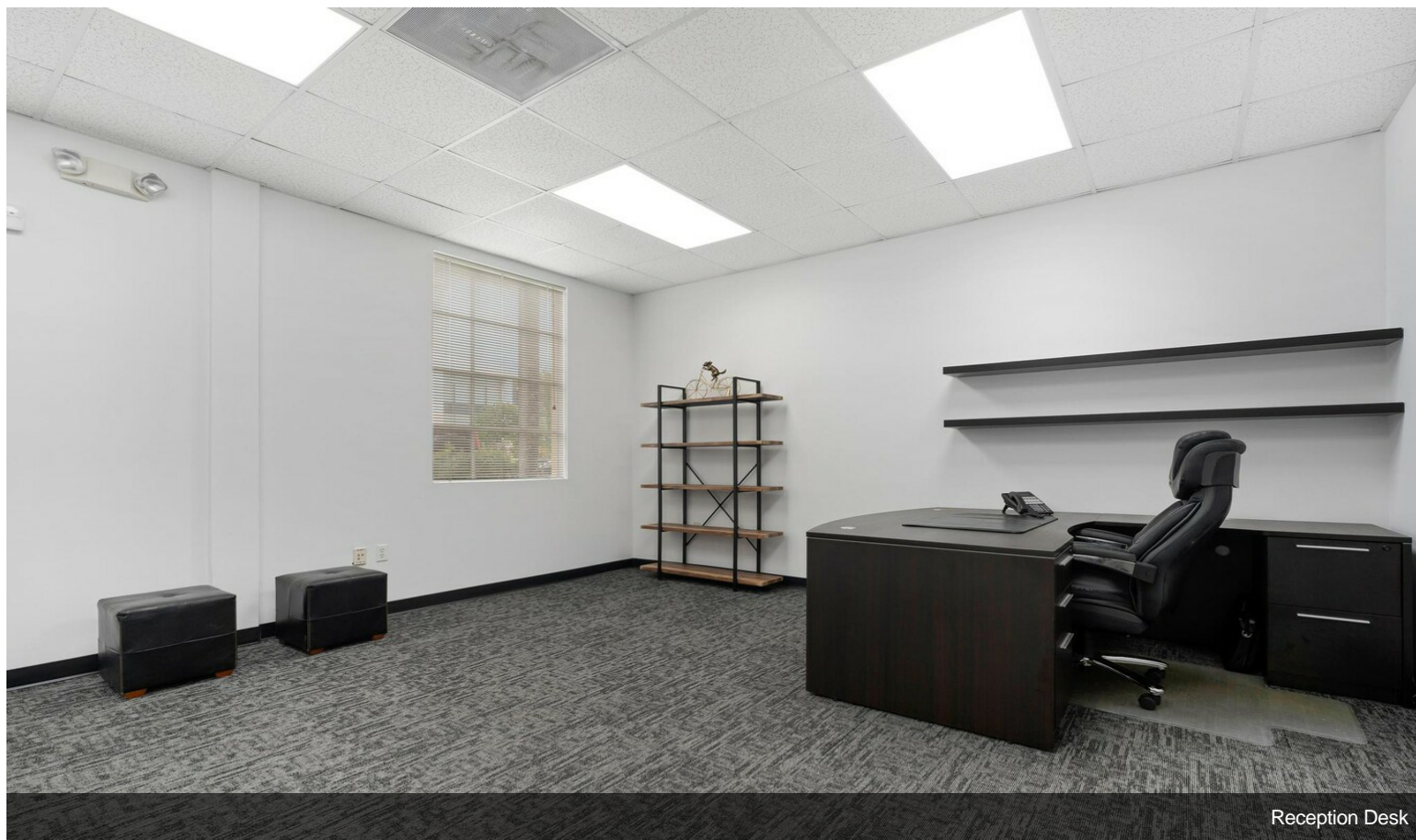


Front of Structure

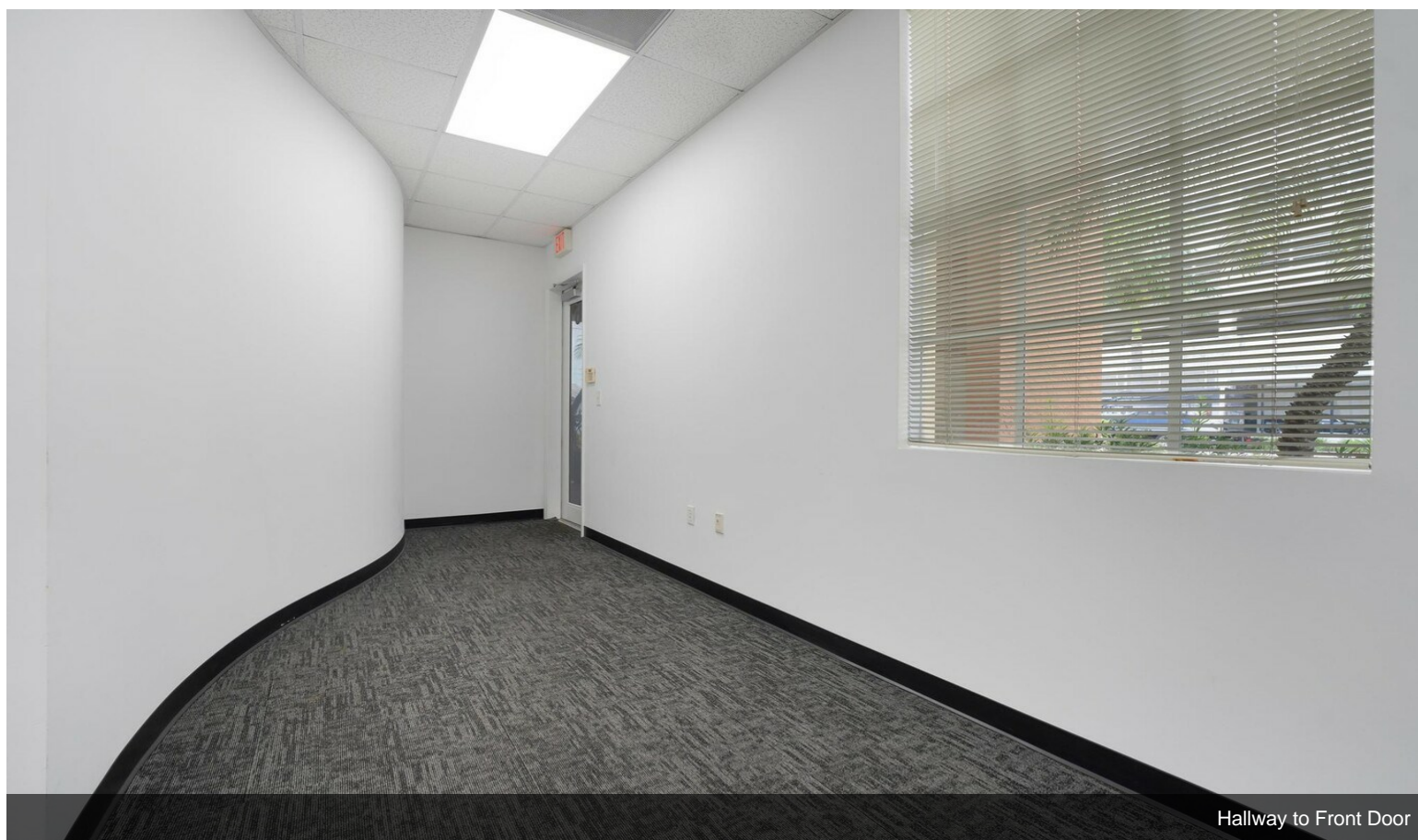


Reception Desk

Property Photos

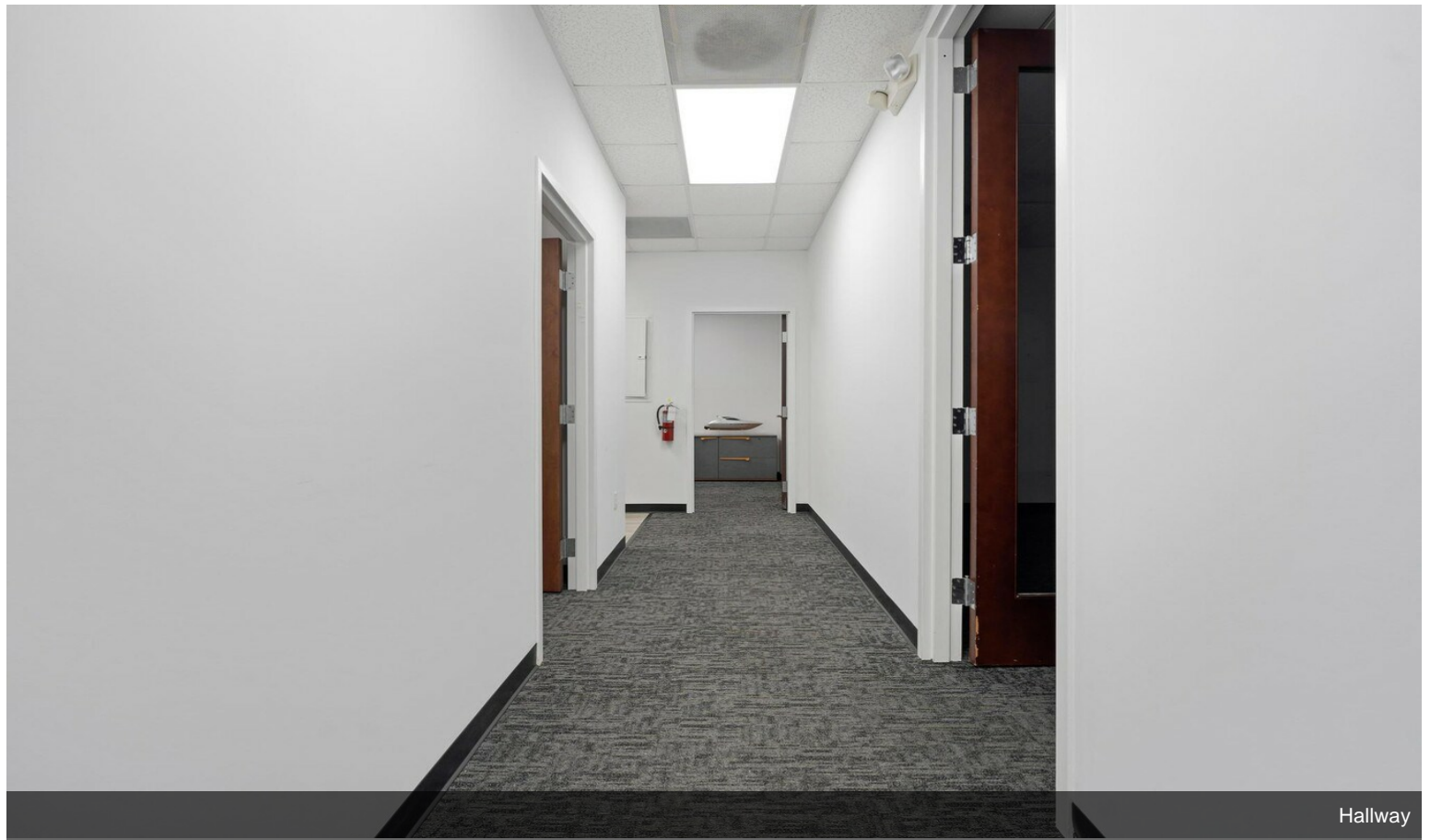


Reception Desk



Hallway to Front Door

Property Photos

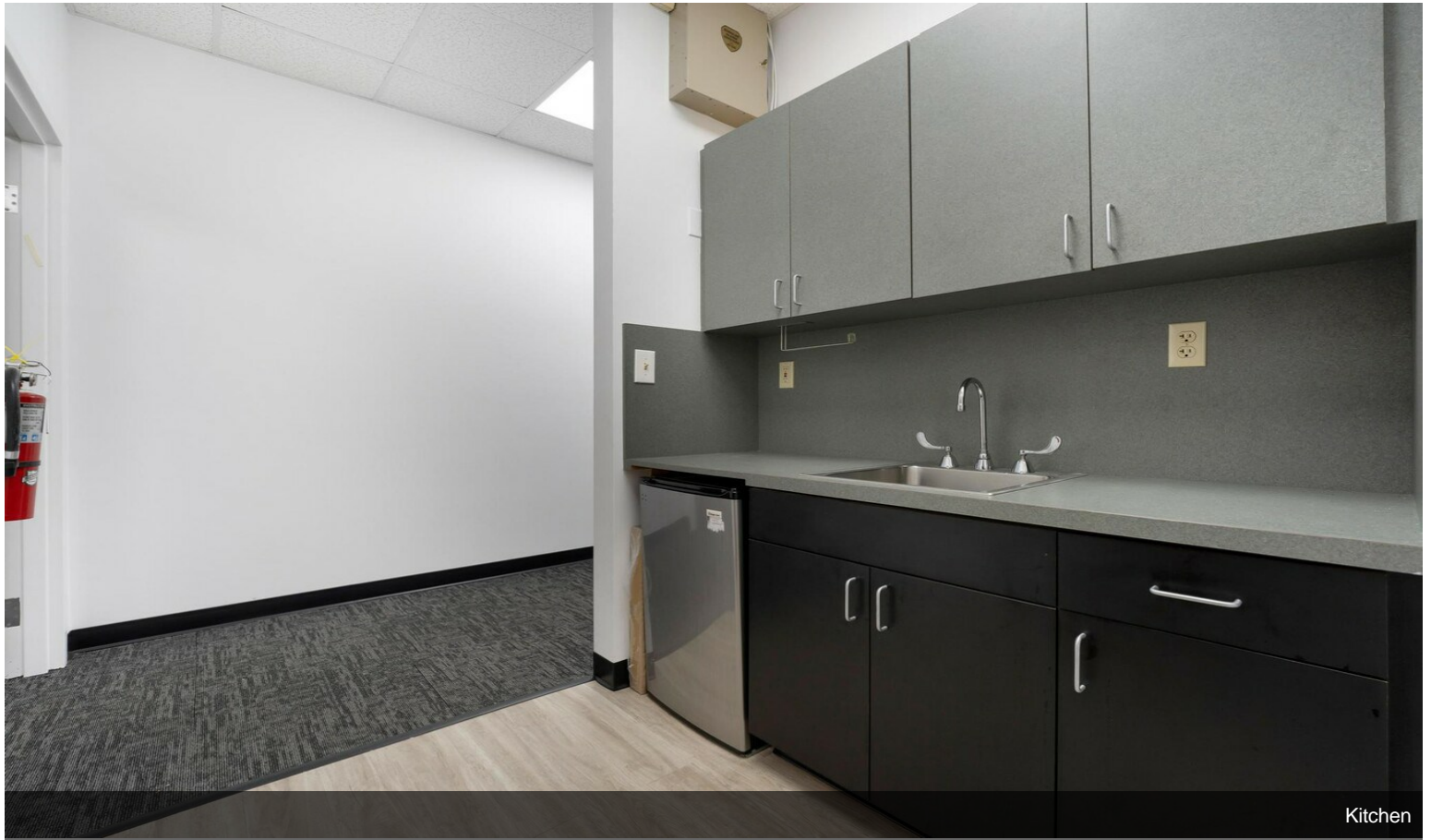


Hallway

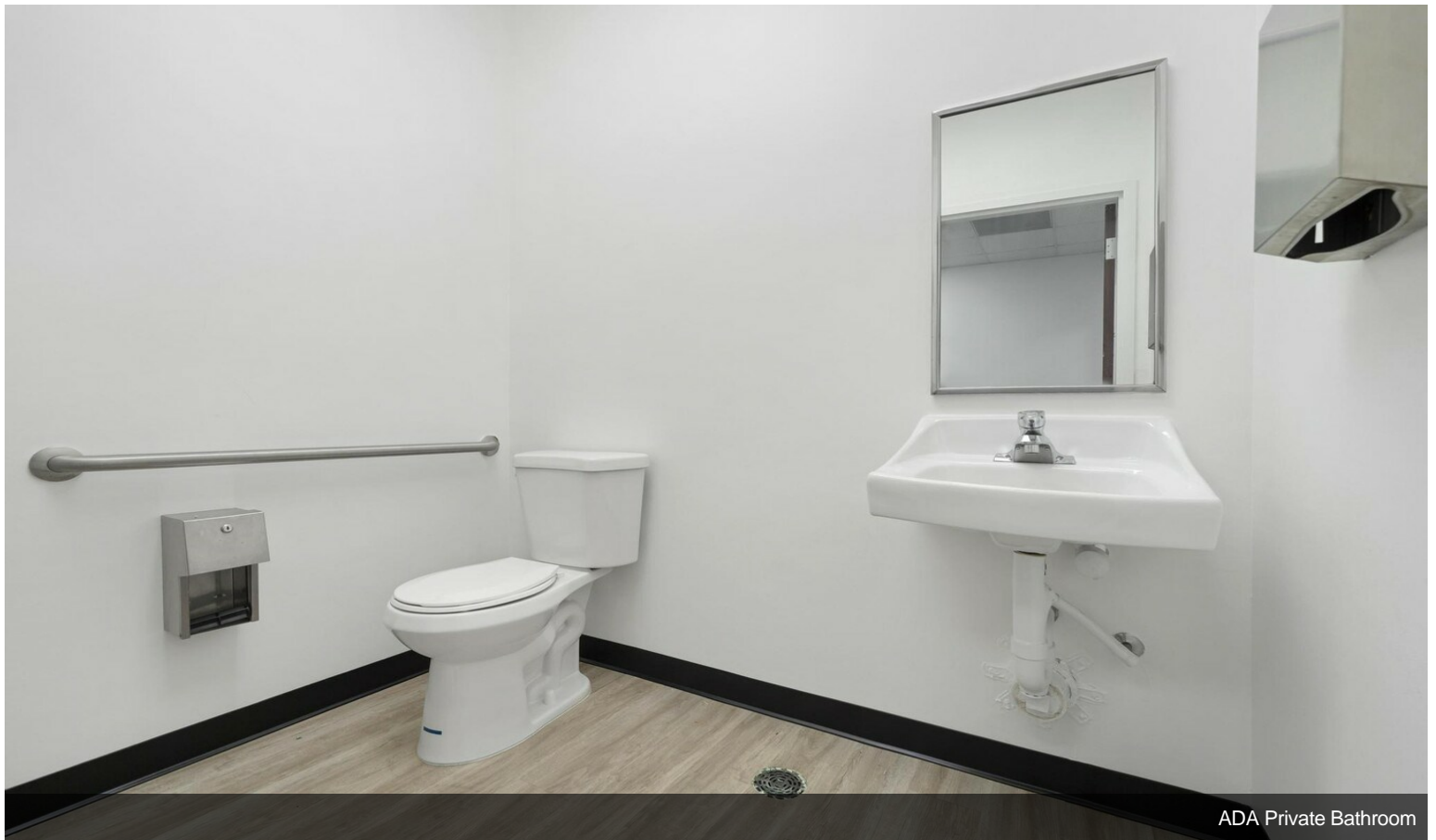


Kitchen

Property Photos

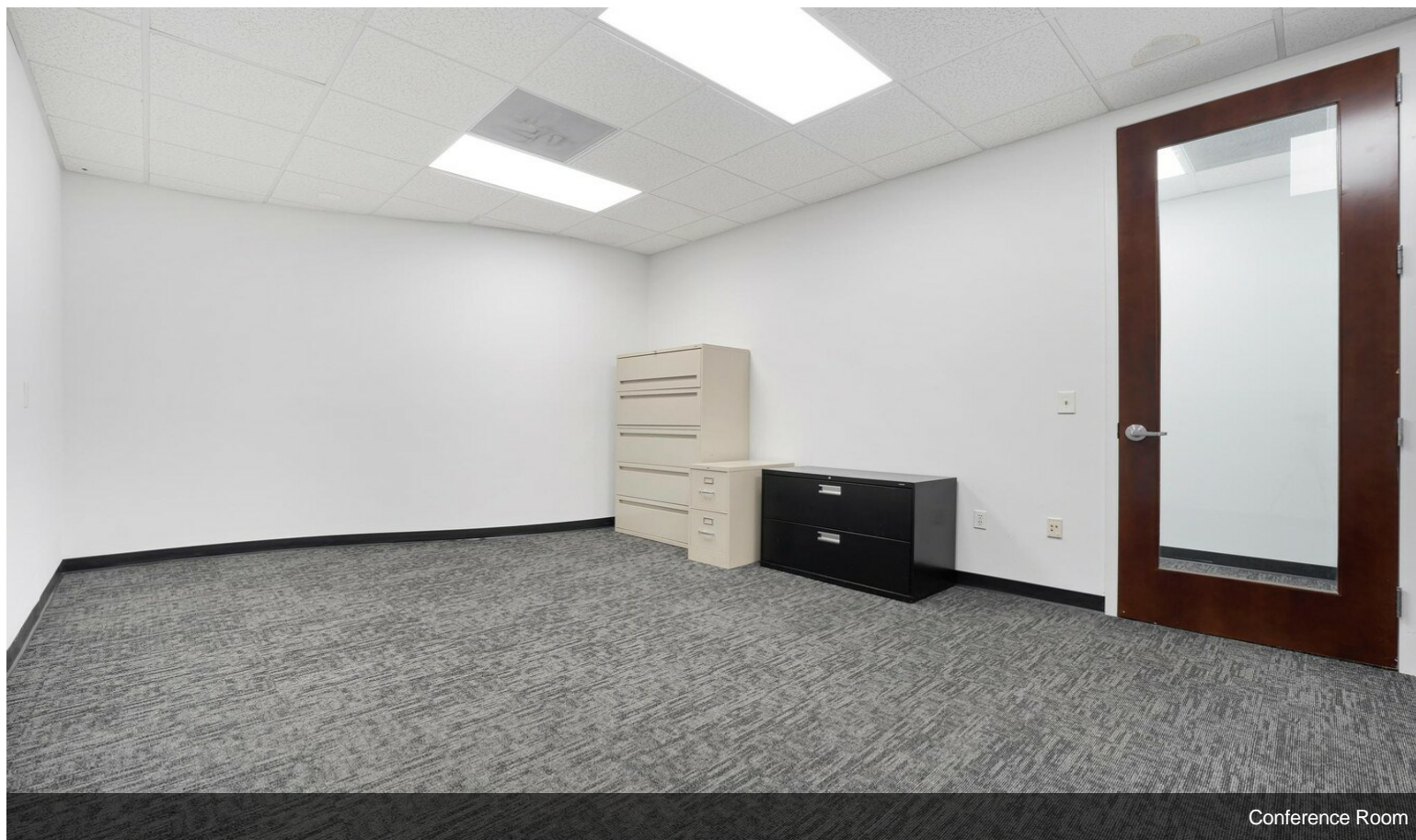


Kitchen

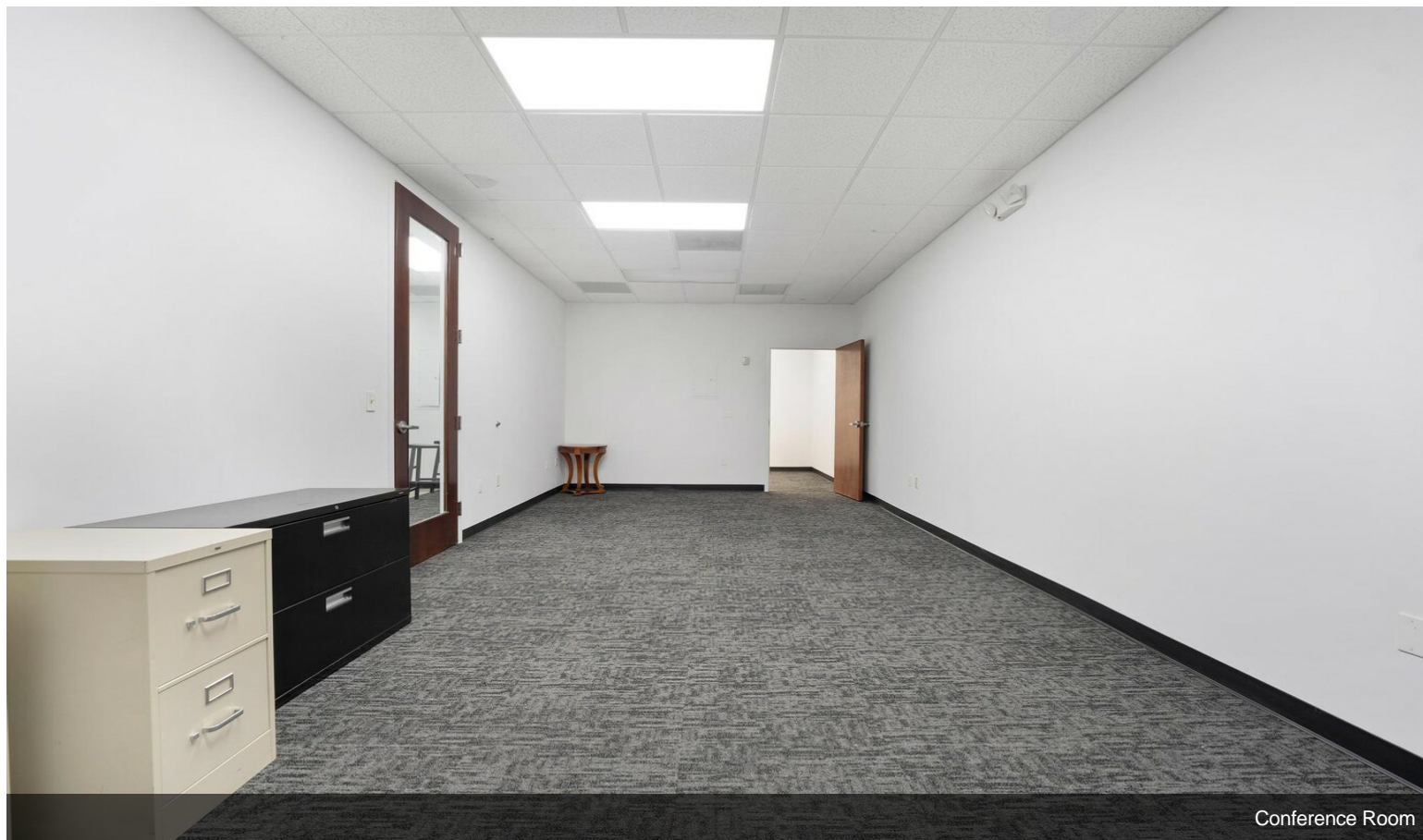


ADA Private Bathroom

Property Photos

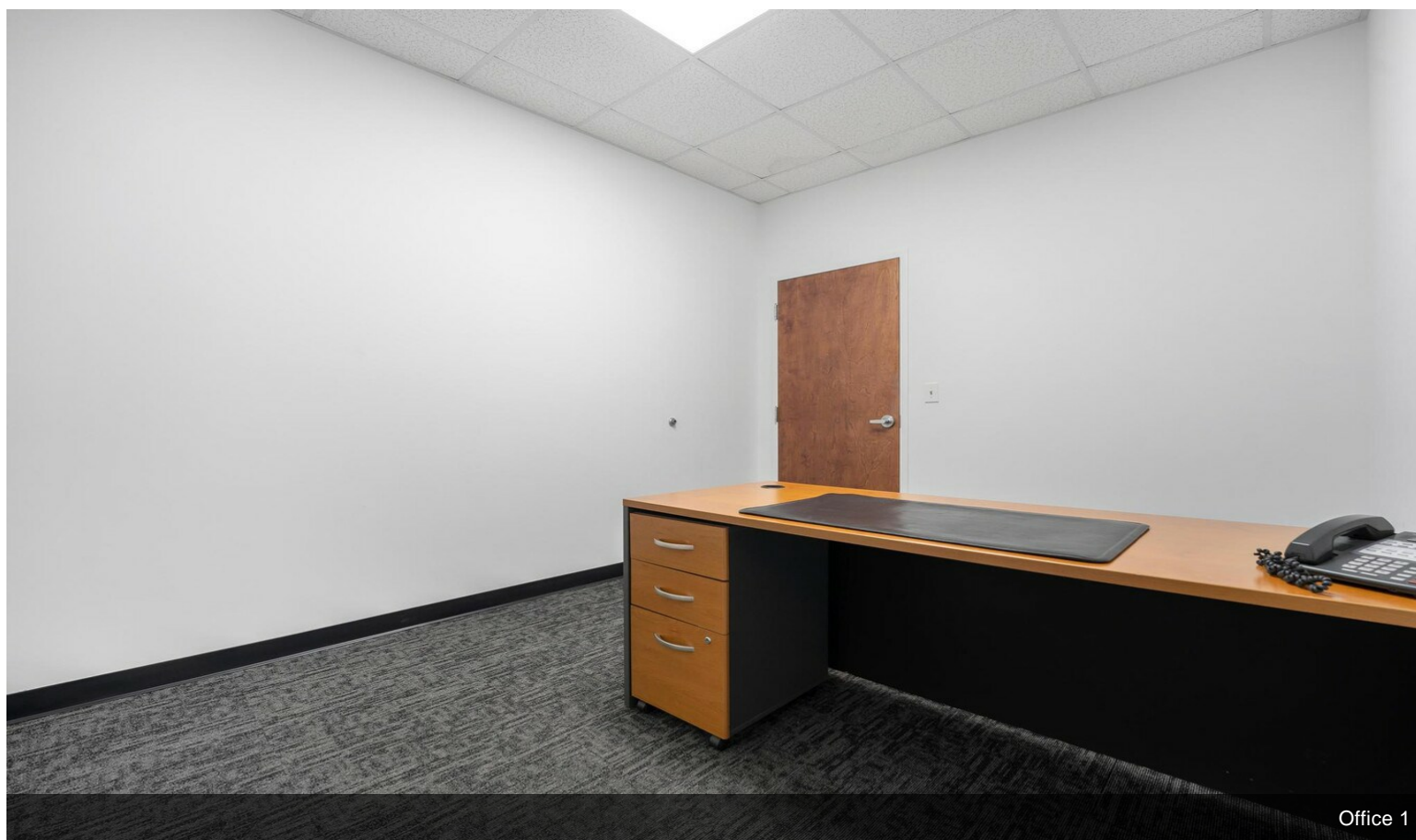
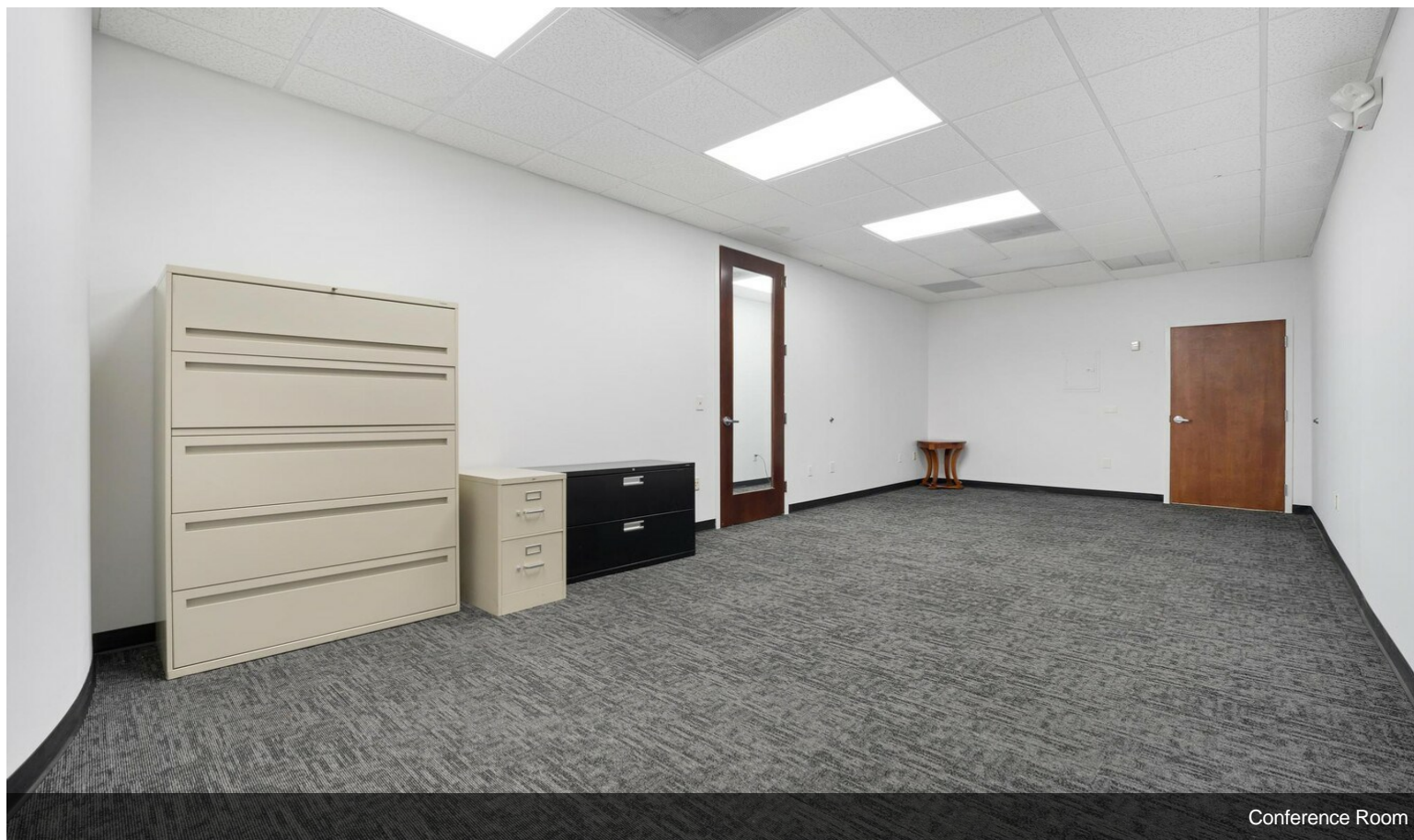


Conference Room

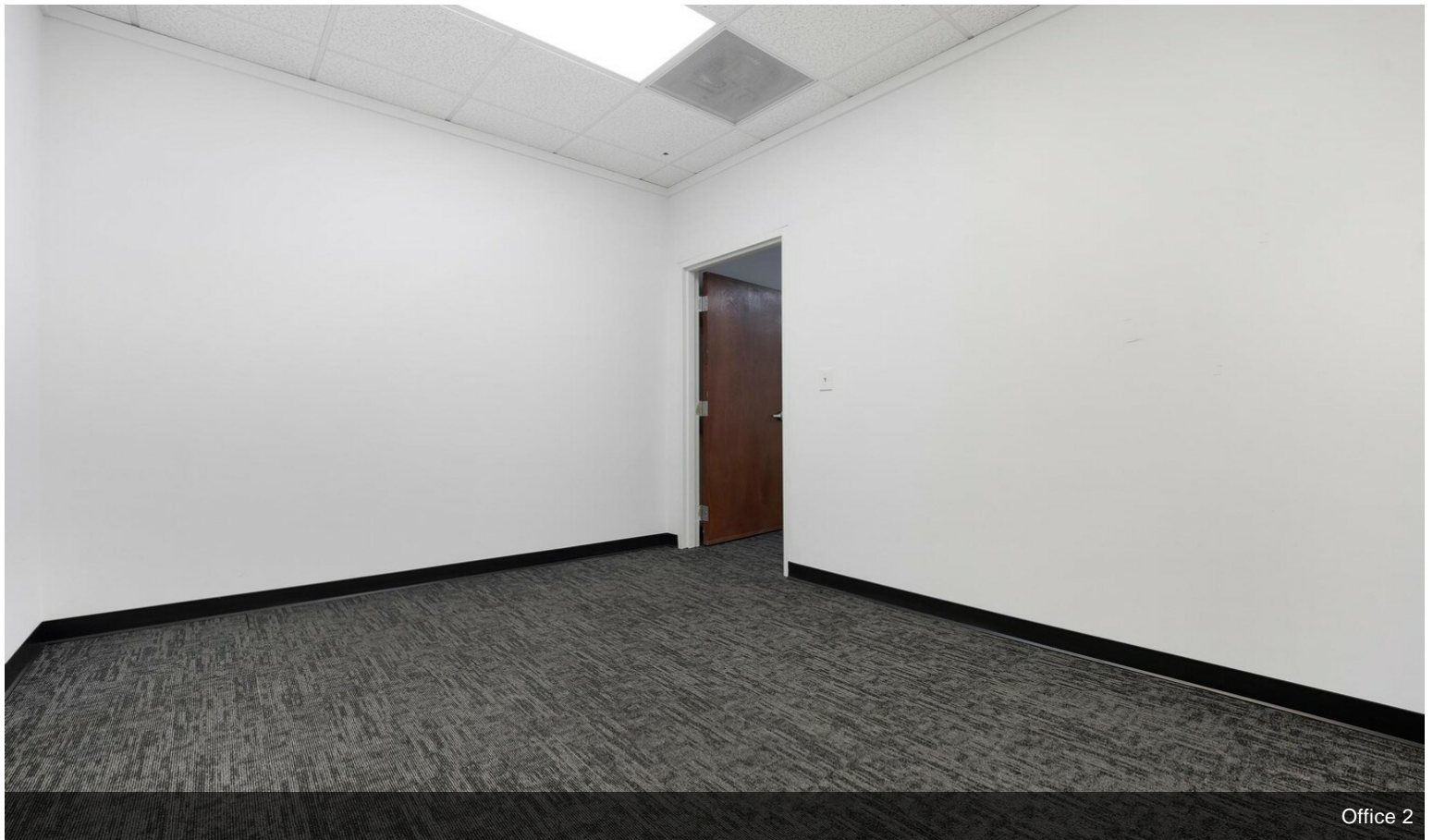
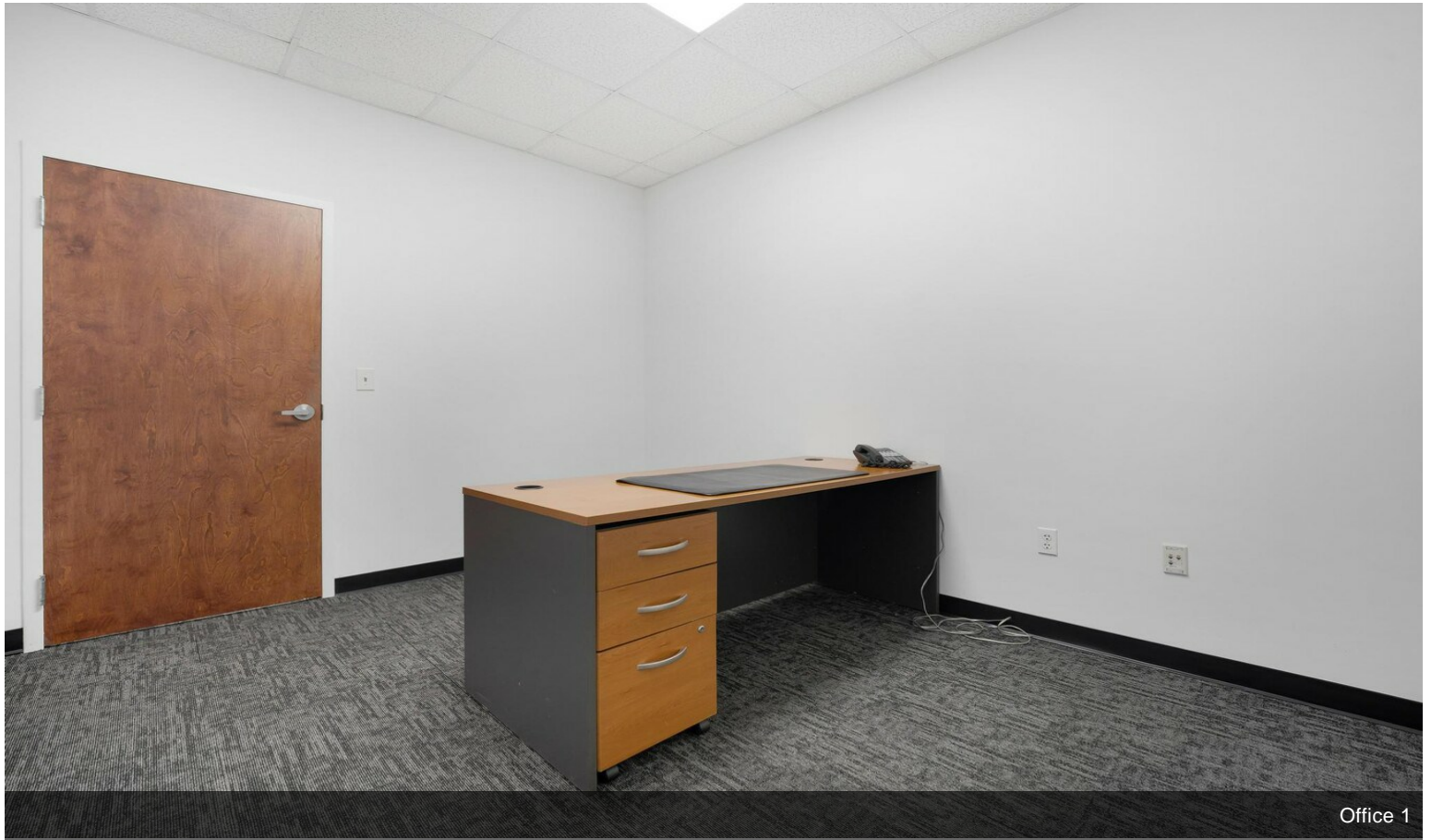


Conference Room

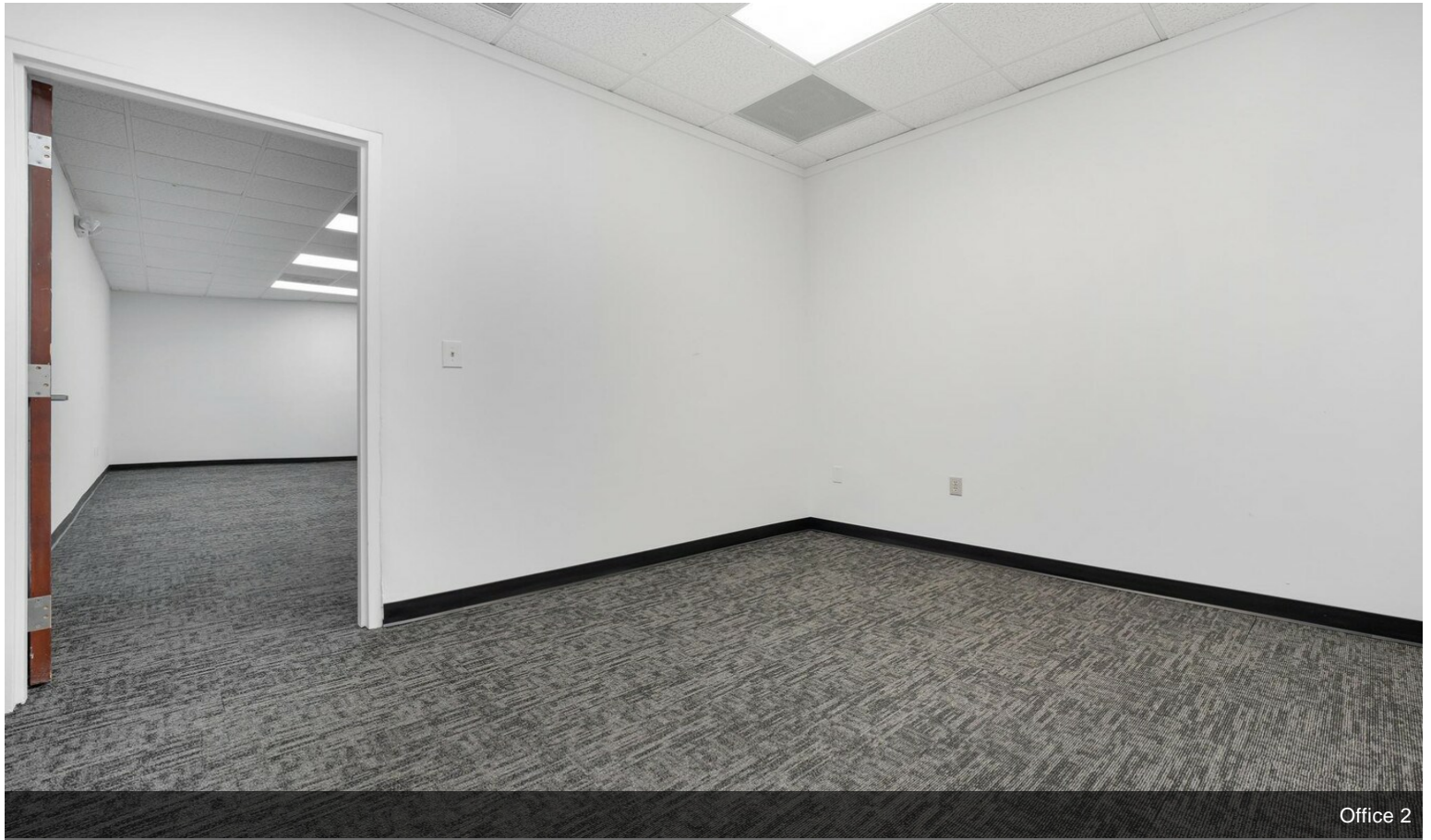
Property Photos



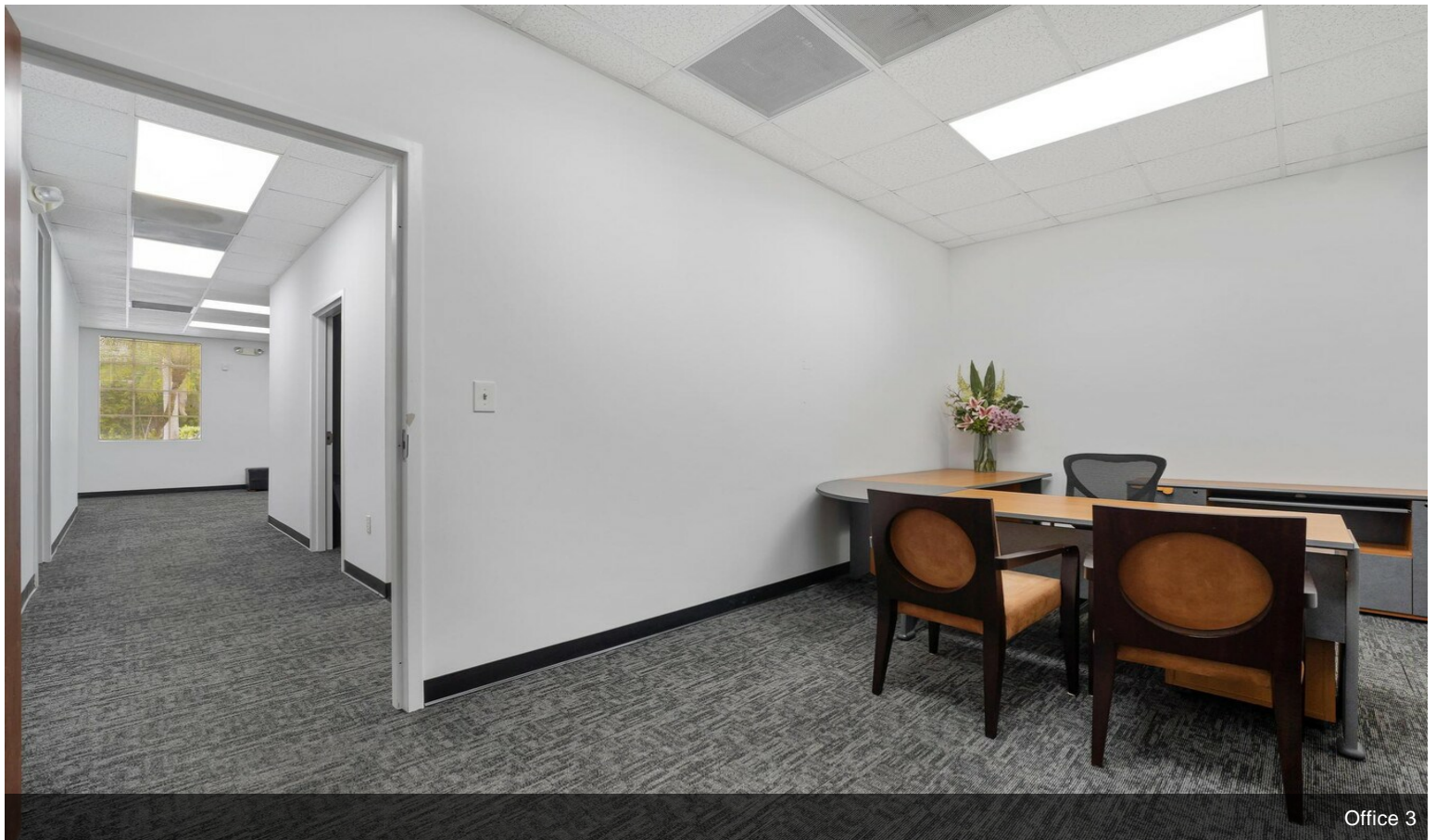
Property Photos



Property Photos



Office 2

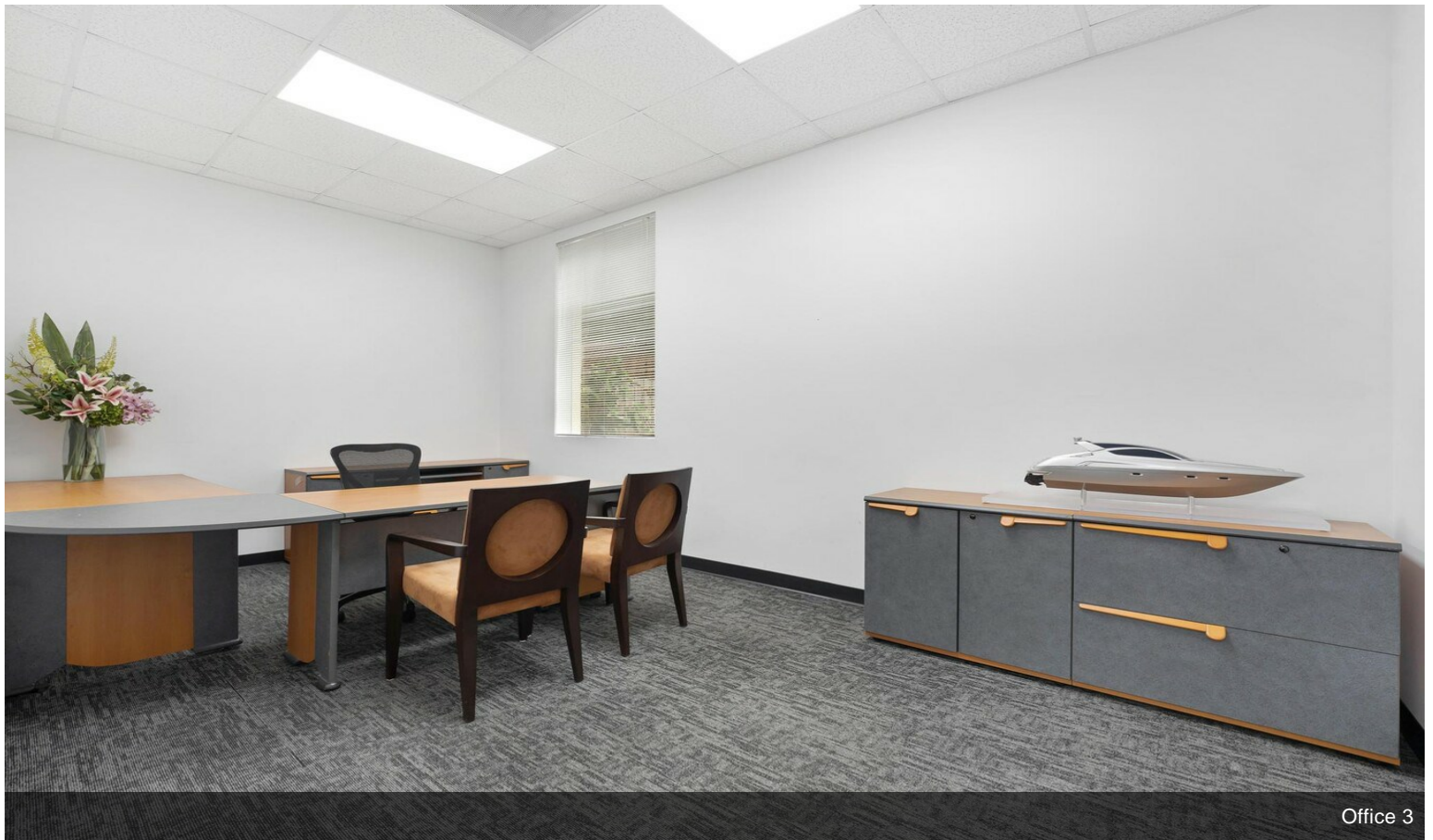


Office 3

Property Photos

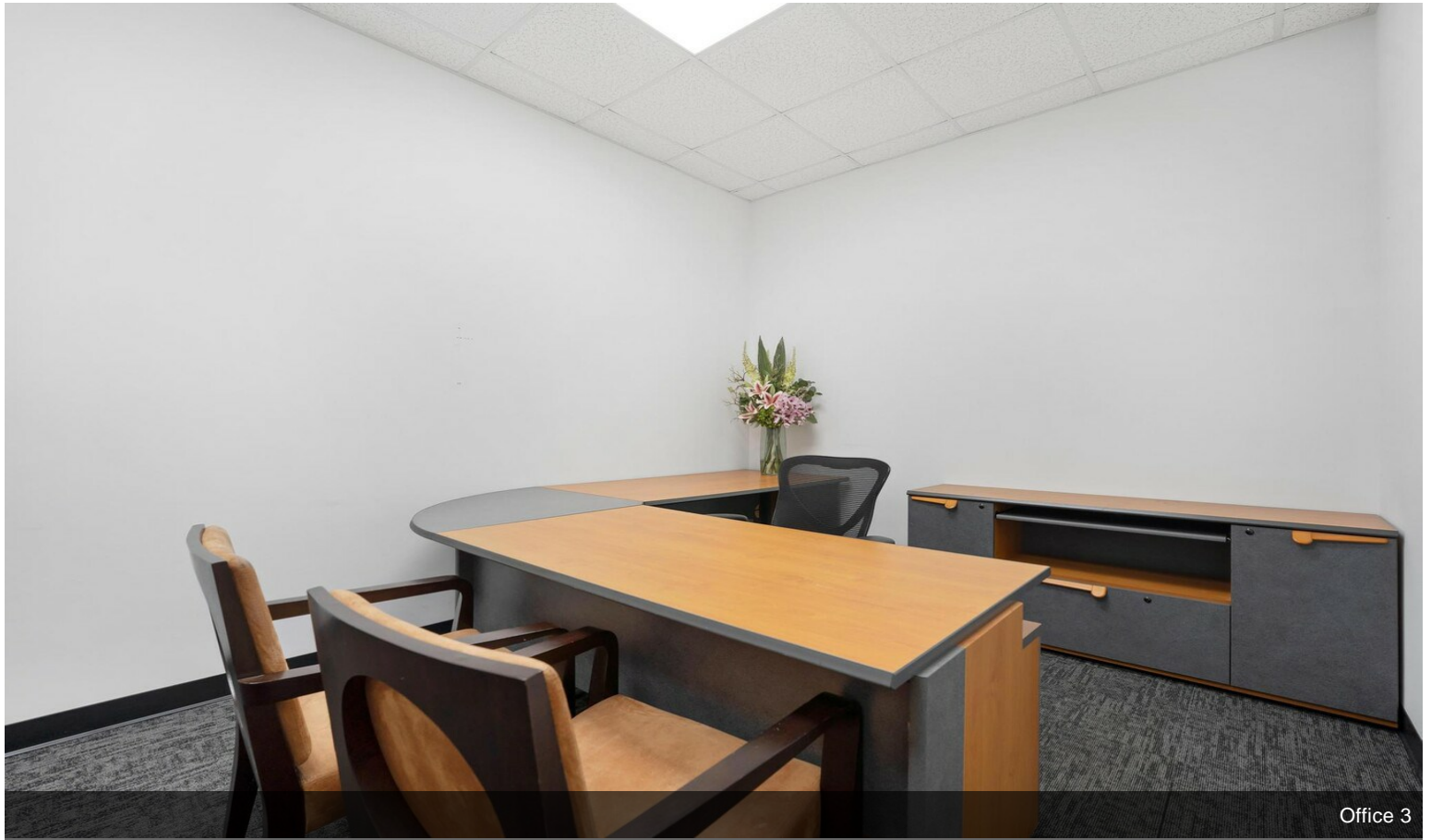


Office 3



Office 3

Property Photos



Office 3



Back of Structure

Property Photos

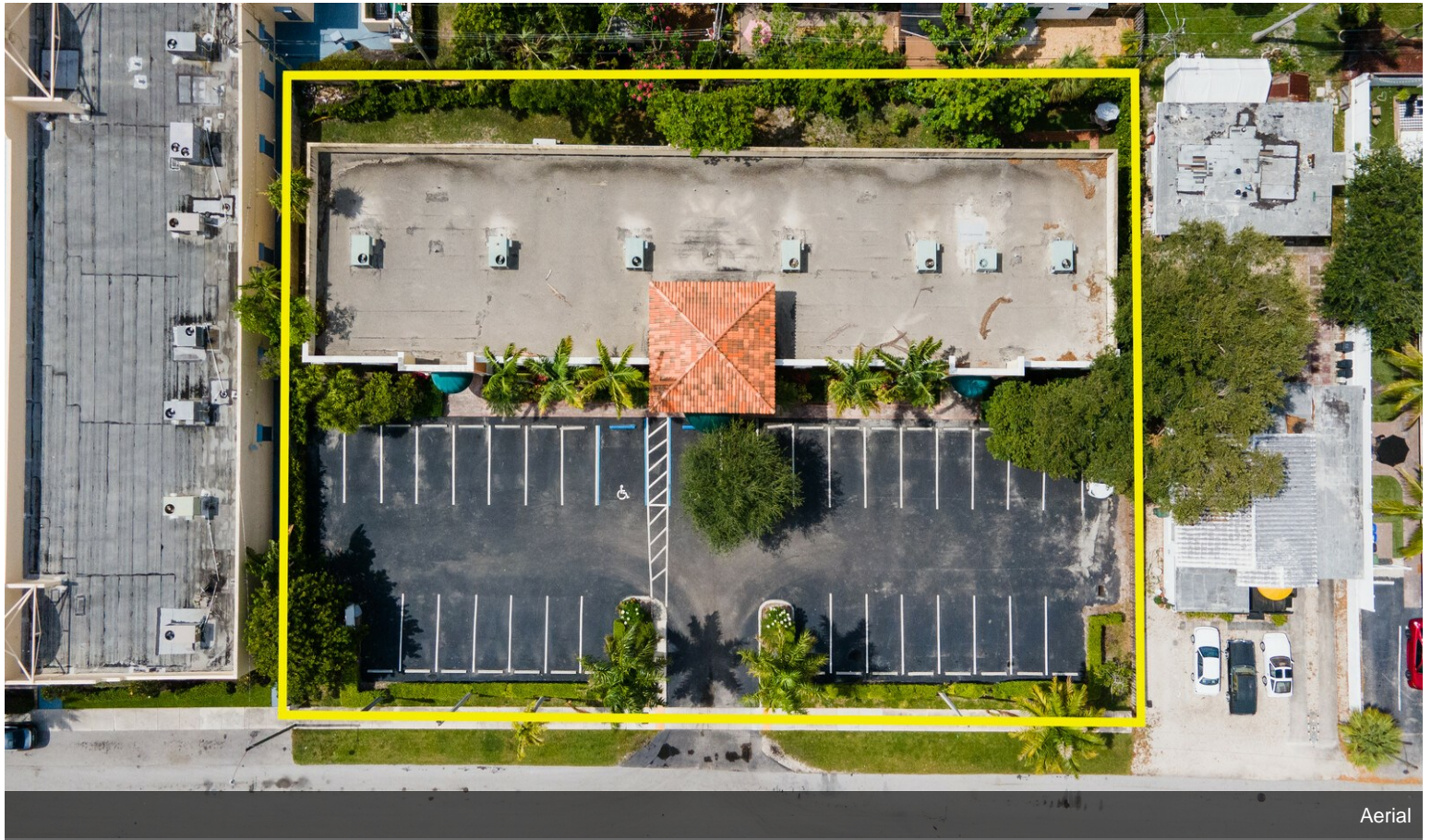


Building Photo



Aerial

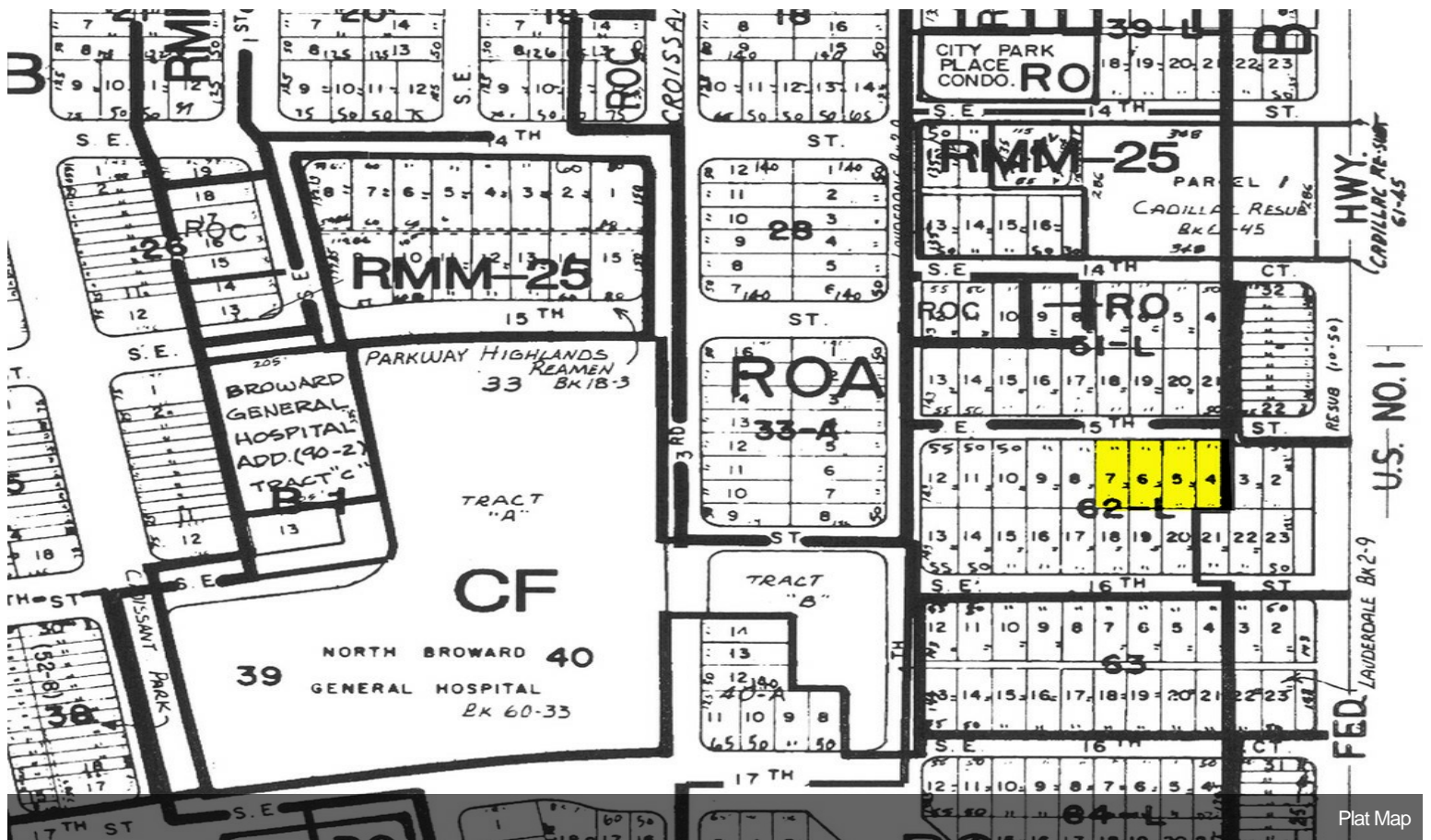
Property Photos



Property Photos

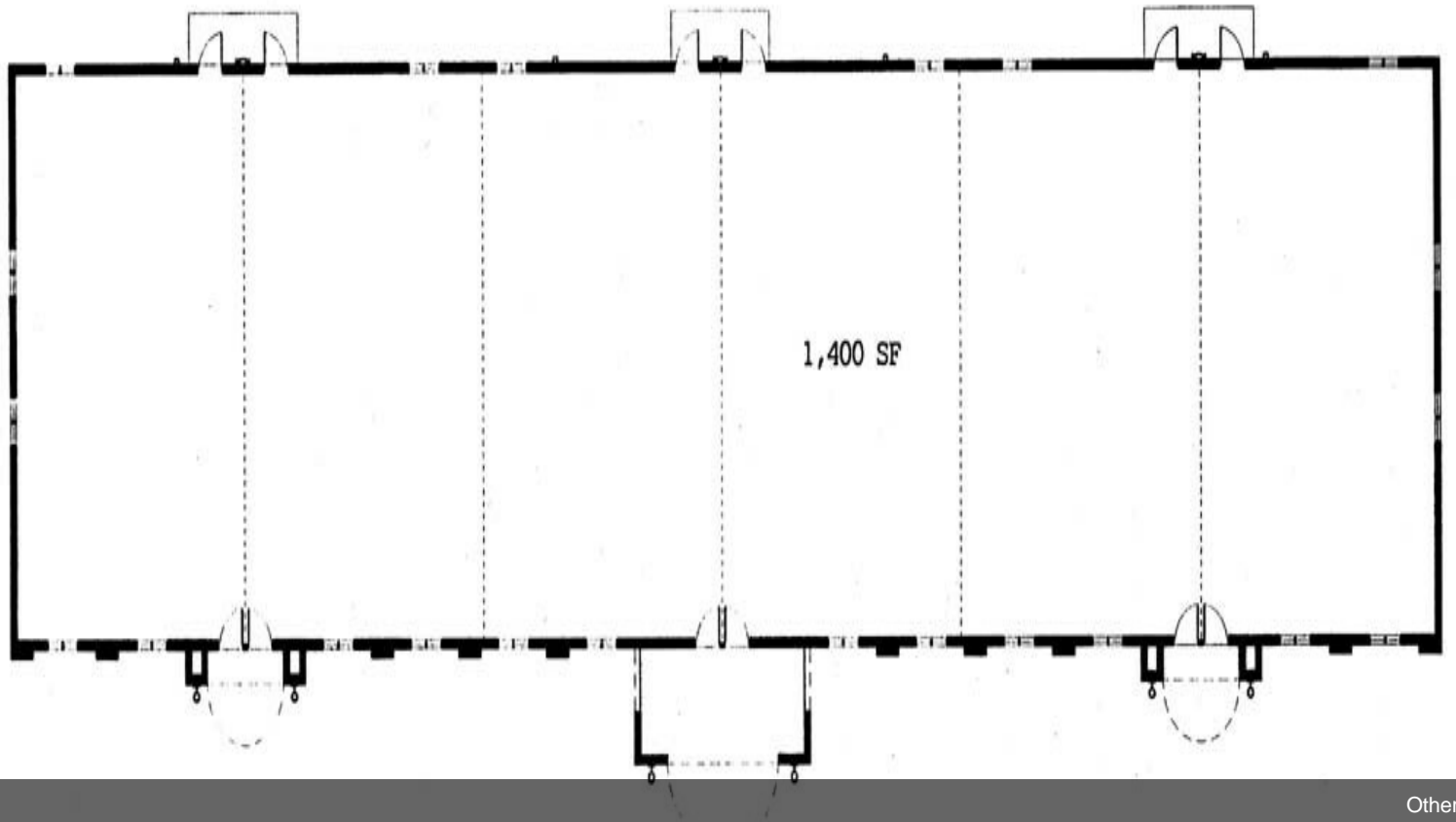


Aerial



Plat Map

Property Photos



Other