



TSP, Inc.  
1500 Highway 52 North  
Rochester, MN 55901  
(507) 288-8155  
www.teamtsp.com

Architecture  
Engineering  
Planning

CONSULTANTS



ENGINEERING  
SURVEYING  
PLANNING  
14070 Hwy 52 S.E.  
Chattfield, MN 55923  
PH: 507-887-1500  
FAX: 507-887-1500  
www.g3cubed.com

HGA



ARCHITECT

I hereby certify that this plan, specification, or report was prepared by me or under my direct supervision and that I am a duly Licensed Architect under the laws of the State of Minnesota.

Print Name: Mike Henry Young  
Signature:   
Date: 12/18/2024 License # 59775

PROJECT TITLE



RGI, INC.  
WEST CIRCLE RETAIL  
CENTER  
Rochester, Minnesota

ISSUES

PR #2

PR 02	04/16/2025	PR 02
PR 01	04/01/2025	PR 01
ADD 01	01/23/2025	ADDENDUM 01
ISSUE	DATE	DESCRIPTION

ISSUE DATE: 12/18/2024  
PROJECT #: 01231097  
DRAWN BY: CRK  
CHECKED BY: MHY

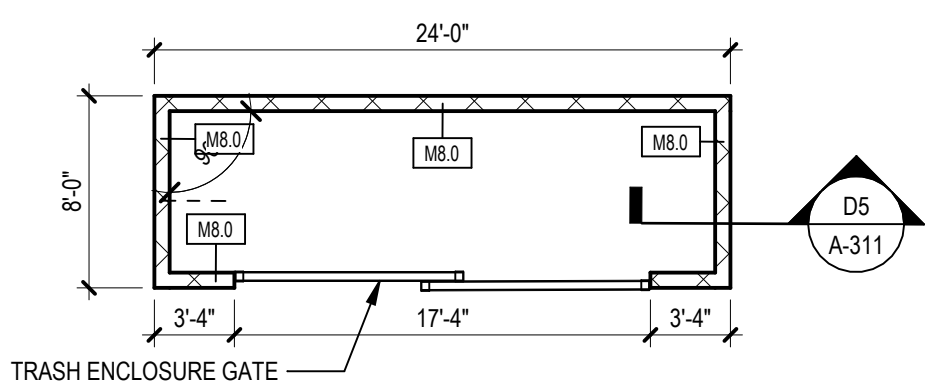
FLOOR PLAN

SHEET NUMBER

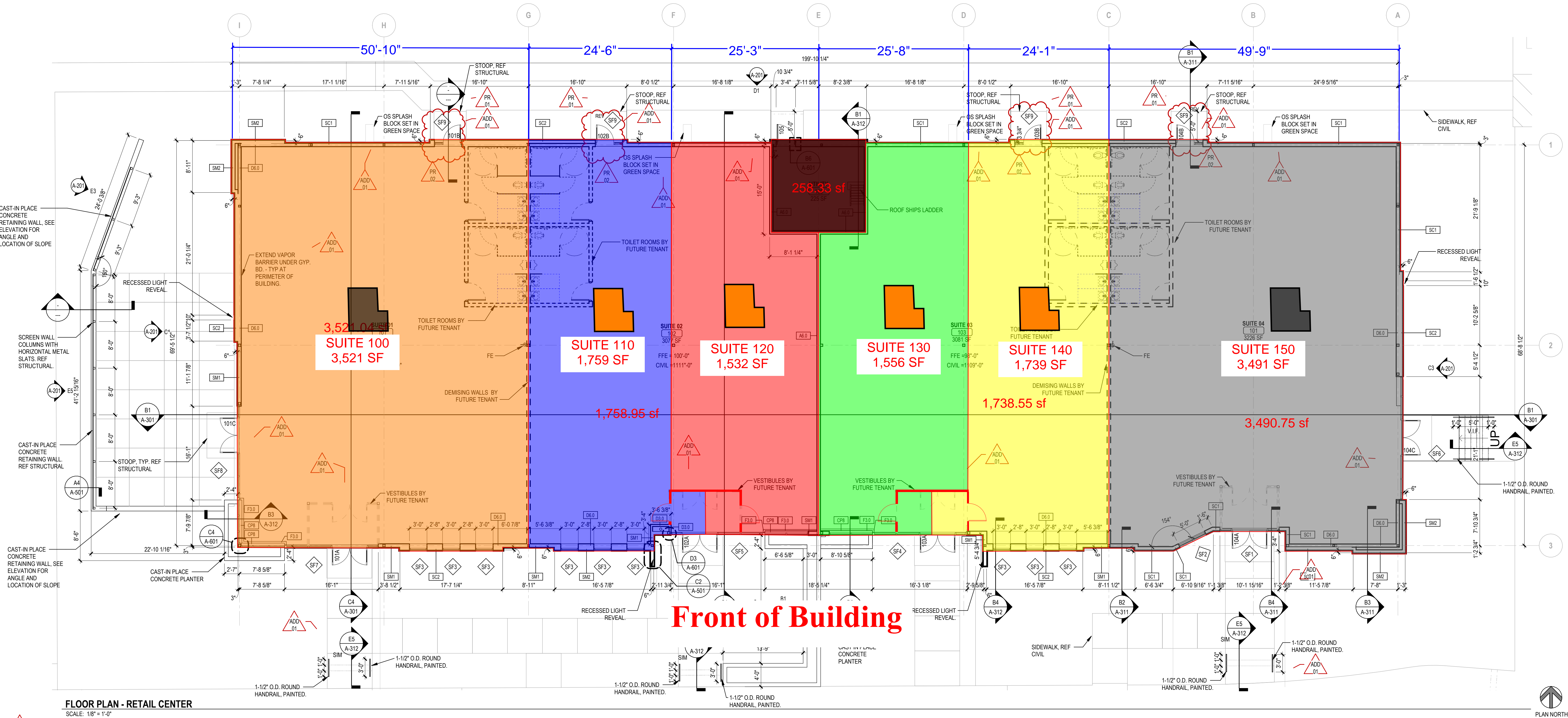
AP101

© TSP, Inc. 2024

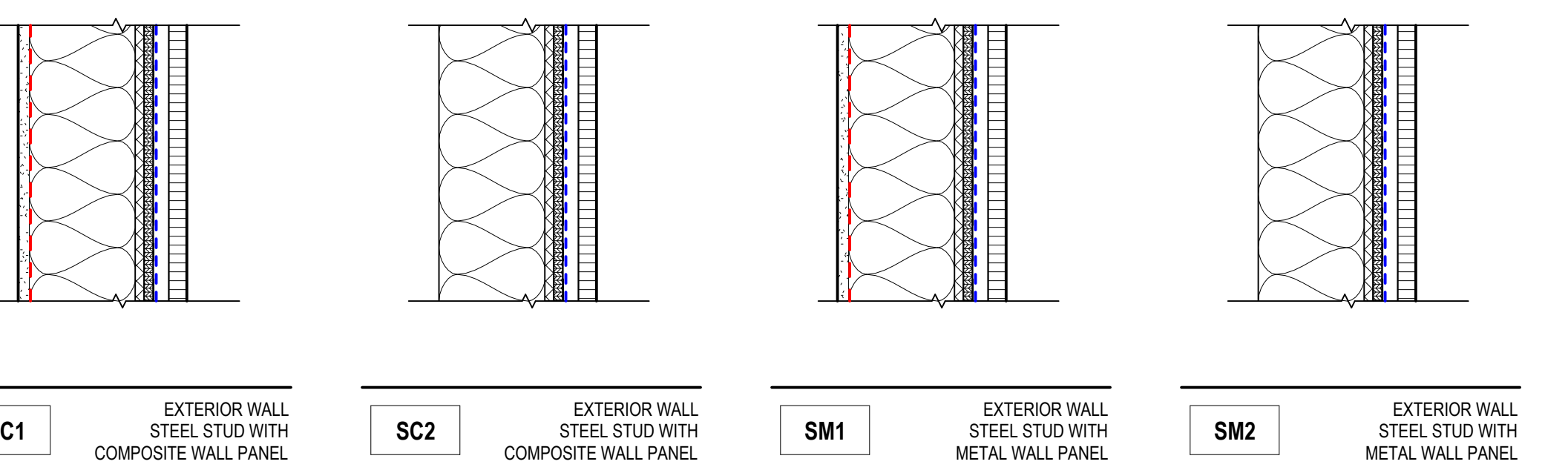
CONSTRUCTION DOCUMENTS



E5 FLOOR PLAN - RETAIL CENTER TRASH ENCLOSURE  
SCALE: 1/8" = 1'-0"



FLOOR PLAN - RETAIL CENTER  
SCALE: 1/8" = 1'-0"



**WALL ASSEMBLY**  
- 5/8" GYPSUM BOARD  
- CLASS 1 VAPOR BARRIER  
- 6" COLD FORMED METAL STUDS WITH BATT INSULATION (R-21 MIN), REF STRUCT  
- WEATHER BARRIER  
- 1-1/2" ZIPS SHEATHING (R-6)  
- WEATHER BARRIER  
- 5/8" FIBER CEMENT PANELS WITH CLIPS (SEE A-202 EXTERIOR ELEVATIONS FOR ALT #1)

**WALL ASSEMBLY**  
- 5/8" GYPSUM BOARD  
- CLASS 1 VAPOR BARRIER  
- 6" COLD FORMED METAL STUDS WITH BATT INSULATION (R-21 MIN), REF STRUCT  
- WEATHER BARRIER  
- 1-1/2" ZIPS SHEATHING (R-6)  
- WEATHER BARRIER  
- 5/8" FIBER CEMENT PANELS WITH CLIPS (SEE A-202 EXTERIOR ELEVATIONS FOR ALT #1)

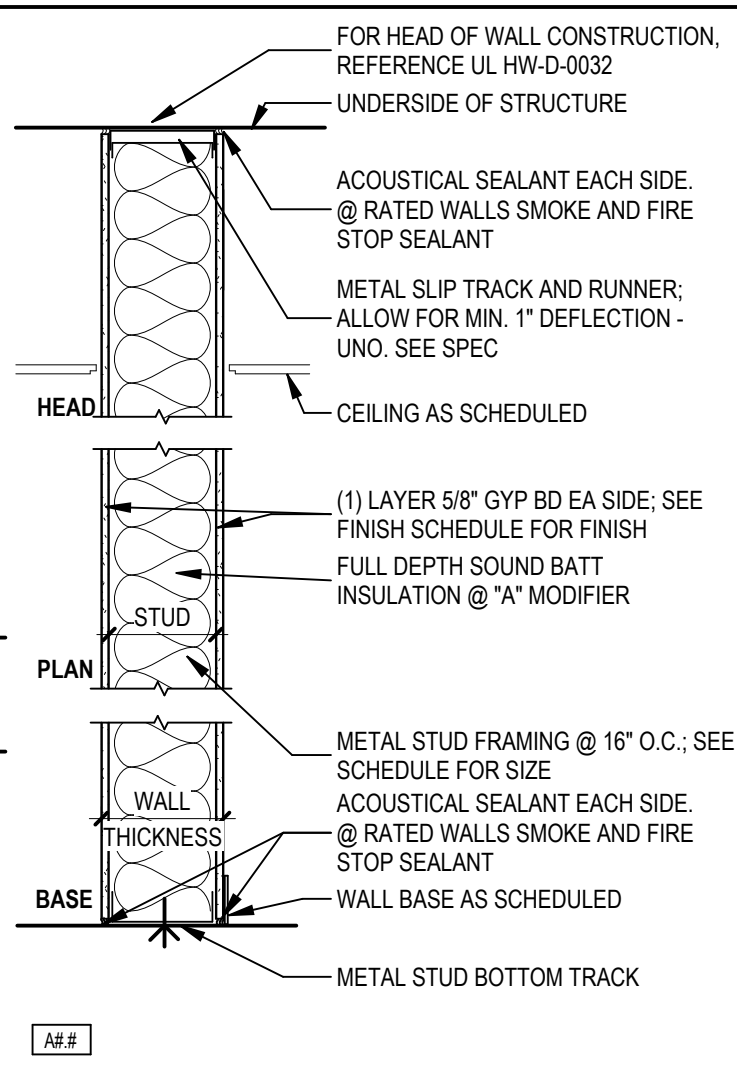
**WALL ASSEMBLY**  
- 5/8" GYPSUM BOARD  
- CLASS 1 VAPOR BARRIER  
- 6" COLD FORMED METAL STUDS WITH BATT INSULATION (R-21 MIN), REF STRUCT  
- WEATHER BARRIER  
- 1-1/2" ZIPS SHEATHING (R-6)  
- WEATHER BARRIER  
- 5/8" FIBER CEMENT PANELS WITH CLIPS (SEE A-202 EXTERIOR ELEVATIONS FOR ALT #1)

**WALL ASSEMBLY**  
- 5/8" GYPSUM BOARD  
- CLASS 1 VAPOR BARRIER  
- 6" COLD FORMED METAL STUDS WITH BATT INSULATION (R-21 MIN), REF STRUCT  
- WEATHER BARRIER  
- 1-1/2" ZIPS SHEATHING (R-6)  
- WEATHER BARRIER  
- 5/8" FIBER CEMENT PANELS WITH CLIPS (SEE A-202 EXTERIOR ELEVATIONS FOR ALT #1)

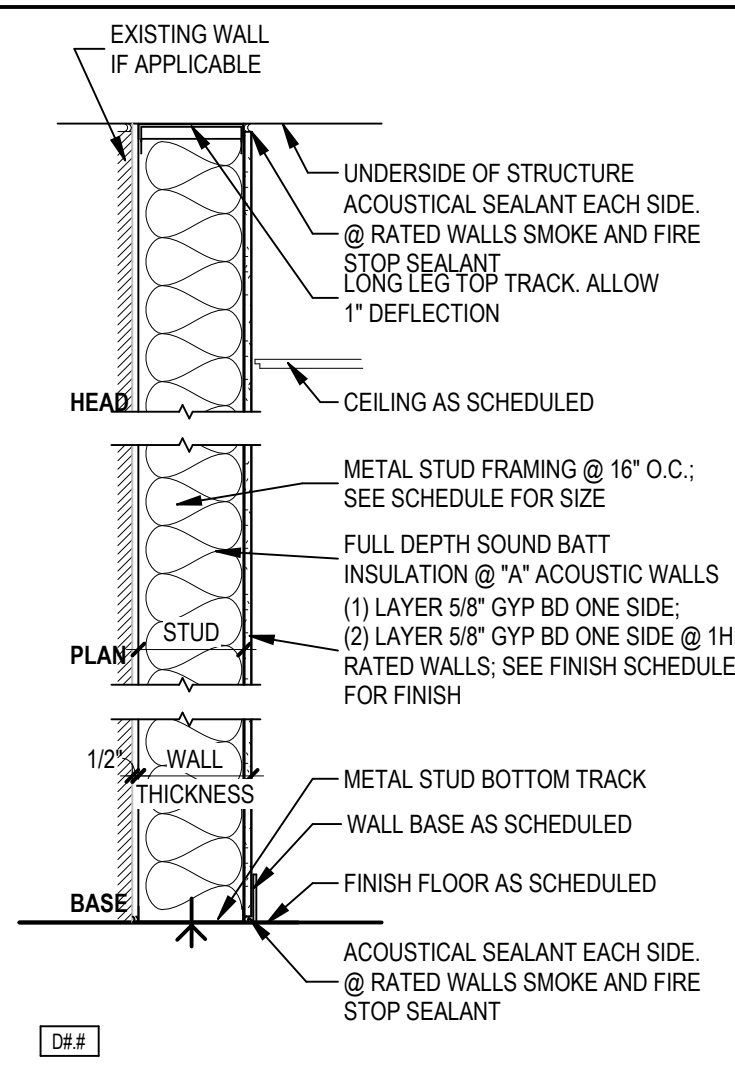
**FLOOR CONSTRUCTION**  
- 4" COLD FORMED CONCRETE SLAB (REF STRUCT FOR SIZE)  
- CLASS 1 VAPOR BARRIER  
- PERIMETER INSULATION EXTENDED A MIN OF 24" INTERIOR AND MEETING R-20  
- DRAINAGE FILL

\* REF STRUCTURAL FOR ADDITIONAL INFORMATION

CONSTRUCTION TYPES  
SCALE: 1/2" = 1'-0"



TYPE A - FULL HEIGHT  
SCALE: 3/4" = 1'-0"



TYPE D - FULL HEIGHT SINGLE SIDED  
SCALE: 3/4" = 1'-0"

#### FLOOR PLAN GENERAL NOTES

- ALL PENETRATIONS THROUGH FIRE RATED WALLS SHALL COMPLY WITH THE BUILDING CODE AND NFPA.
- PROVIDE BLOCKING AT PARTITIONS AS REQUIRED FOR MOUNTING OF FURNISHED AND NON-FURNISHED WALL MOUNTED ITEMS.
- ALIGN FINISHED FACE OF CONTINUOUS PARTITIONS THAT CHANGE PARTITION TYPES ALONG A STRAIGHT RUN.
- EDGE OF INTERIOR DOOR FRAMES TO BE 4" FROM ADJACENT WALL (6" FROM DOOR PANEL TO ADJACENT WALL) U.N.O.
- REFER TO A-600 SHEETS FOR DOOR SCHEDULE, DOOR, WINDOW, AND FRAME TYPES.
- ALL WALL DIMENSIONS ARE TO FACE OF STUD U.N.O.

#### FLOOR PLAN LEGEND

ROOM NAME	ROOM TAG
101	NEW WORK W/ DOOR TAG
XX	CONSTRUCTION LIMITS
XX	WINDOW TAG
XX	WALL TAG
7 ##	REFERENCE KEYNOTE TAG
	ELECTRICAL PANEL, REF ELECTRICAL PLANS