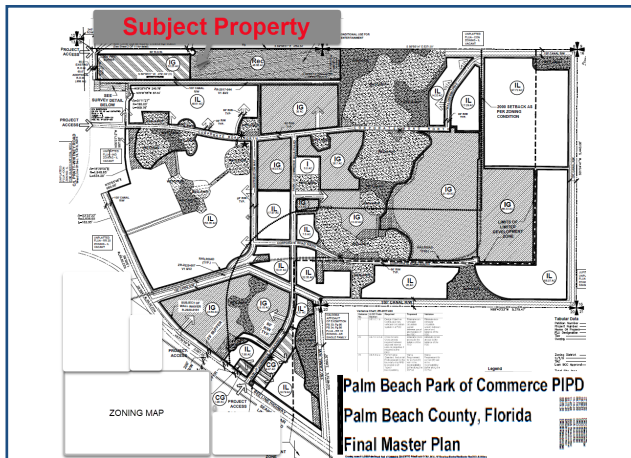


**FOR
SALE**

78.91± ACRES
ZONING
INDUSTRIAL/RECREATIONAL



Property Overview

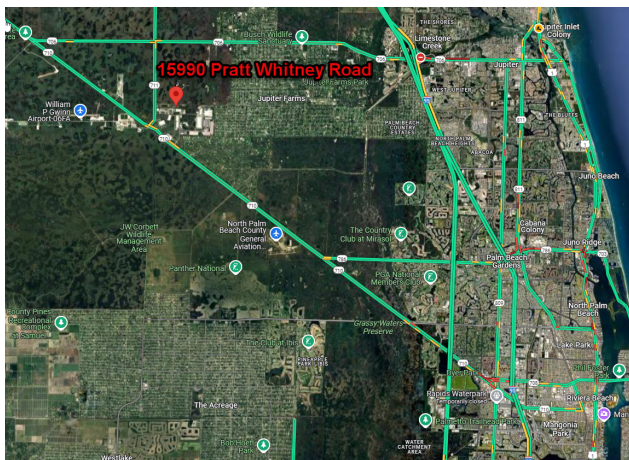
Located near the West entrance of the Palm Beach Park of Commerce at 15990 Pratt Whitney Road, this is one of the largest remaining industrial/recreational land parcels in Northern Palm Beach County. Spanning approximately 78.91± acres, the property has water, sewer, and utilities, at the site. Strategically positioned, it offers excellent connectivity to major transportation corridors, including highways, rail services, seaports, and airports

Palm Beach Park of Commerce is home to over 70 companies and boasts more than 4 million square feet of industrial space. As part of this thriving business hub, this expansive parcel presents an exceptional opportunity for business expansion and development.

List Price: \$30,000,000

Rob Steiner

Senior Vice President
Cell: 561.262.7938
rob@fblcommercial.com



3535 Military Trail, Suite 101, Jupiter, FL 33458 | (561) 427-2154 |

No warranty or representation, expressed or implied, is made as to the accuracy of the information contained herein and same is submitted subject to errors, omissions, change of price, rental or other conditions, withdrawal without notice and to any special listing conditions imposed by our principals.