

FOR LEASE

# 1544 EUREKA ROAD

ROSEVILLE, CA

**EXCLUSIVELY LISTED BY:**

**Kevin Larscheid**

Executive Vice President

Lic. 00816790

+1 916 781 4818

[kevin.larscheid@cbre.com](mailto:kevin.larscheid@cbre.com)

**Scott Rush**

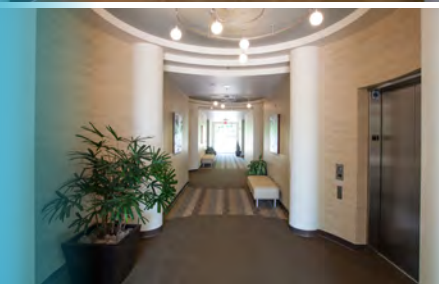
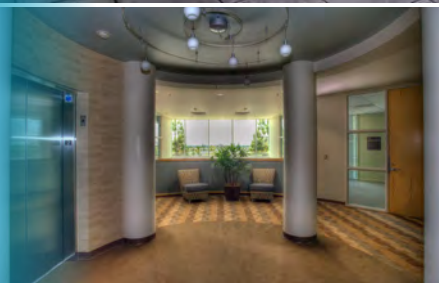
First Vice President

Lic. 01228479

+1 916 781 4802

[scott.rush@cbre.com](mailto:scott.rush@cbre.com)

**CBRE**



# Property Highlights

**1544 EUREKA ROAD**  
ROSEVILLE, CA

**:: SPACE AVAILABLE:**

- SUITE 110: ±1,096\* RSF
  - SUITE 120: ±1,976\* RSF
  - SUITE 125: ±5,693 RSF
  - SUITE 260: ±1,599 RSF
  - SUITE 280: ±2,281\* RSF
  - SUITE 200: ±5,386\* RSF
- \*SUITES CAN BE COMBINED FOR ±3,072 RSF
- \*SUITES CAN BE COMBINED FOR ±7,667 RSF

- :: LEASE RATE: \$2.10 PSF, FULL SERVICE GROSS**
- :: PRESTIGIOUS EUREKA CORPORATE PLAZA ADDRESS**
- :: AMAZING NATURAL LIGHTING**
- :: FIRST FLOOR RESTROOMS HAVE LOCKERS & SHOWERS**

## Nearby Amenities

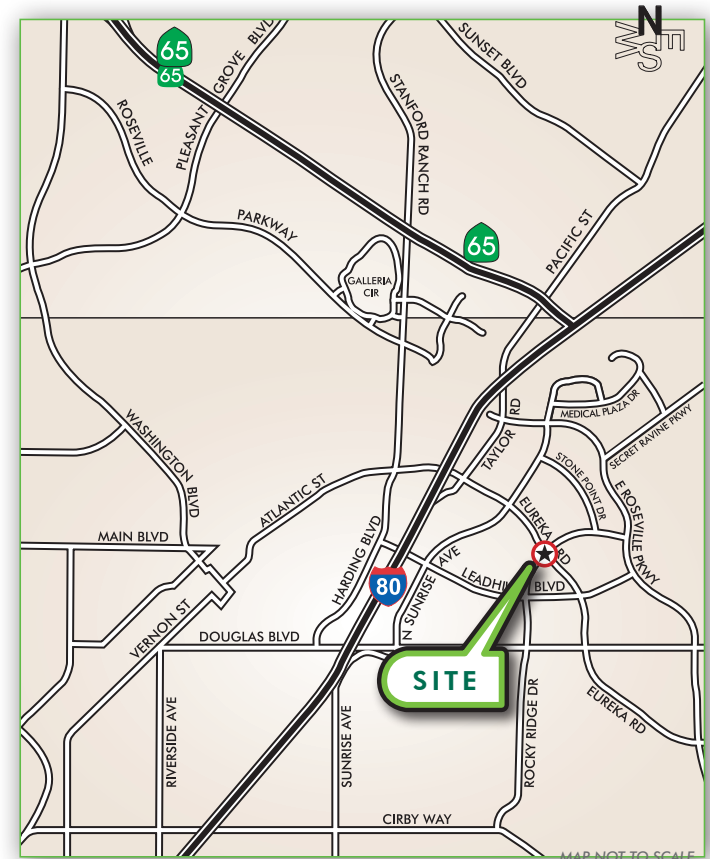
Walk to some of Roseville's most popular restaurants:

- :: Fat's
- :: Paul Martin's
- :: Mikuni's
- :: Thai Kitchen
- :: Beach Hut Deli
- :: Panda Express

Local to Boutique and Regional Shopping and Services:

- :: Stone Point Retail Center
- :: Creekside Town Center
- :: The Fountains Lifestyle Center
- :: The Galleria Mall

“This premier two-story, ±51,337 square foot, Class A office is located near the corner of Eureka Road and Rocky Ridge Drive in Roseville. Excellent location with the area's finest shops, restaurants, entertainment and theaters nearby.”



## First Floor

### SUITE 125

±5,693 RSF

(A CUSTOM LAYOUT IS AVAILABLE)

\$2.10 PSF/MO, FSG

AVAILABLE W/60 DAY NOTICE:

### SUITE 110

±1,096\* RSF

### SUITE 120

±1,976\* RSF

\*SUITES CAN BE COMBINED  
FOR ±3,072 RSF



FLOOR PLANS ARE NOT TO SCALE—ALL DIMENSIONS ARE APPROXIMATE.

## Second Floor

\$2.10 PSF/MO., FSG



**SUITE 260**  
±1,599 RSF

**SUITE 280\***  
±2,281 RSF

**SUITE 200\***  
±5,386 RSF  
(Available  
5/31/25)

FLOOR PLANS ARE NOT TO SCALE—ALL DIMENSIONS ARE APPROXIMATE.

\*Suites can be combined for ±7,667 RSF



SITE

ROCKY RIDGE DR

EUREKA RD

LEADHILL BLVD

E. ROSEVILLE PKWY

FOR MORE  
INFORMATION  
PLEASE  
CONTACT

**Kevin Larscheid**

Executive Vice President  
Lic. 00816790  
+1 916 781 4818  
kevin.larscheid@cbre.com

**Scott Rush**

First Vice President  
Lic. 01228479  
+1 916 781 4802  
scott.rush@cbre.com

[www.cbre.com/kevin.larscheid](http://www.cbre.com/kevin.larscheid)

FOR LEASE

**1544 EUREKA ROAD**  
ROSEVILLE, CA

**EXCLUSIVELY LISTED BY:**

**Kevin Larscheid**

Executive Vice President

Lic. 00816790

+1 916 781 4818

kevin.larscheid@cbre.com

**Scott Rush**

First Vice President

Lic. 01228479

+1 916 781 4802

scott.rush@cbre.com

CBRE, Inc.

1512 Eureka Road, Suite 100

Roseville, CA 95661

916 781 2400

www.cbre.com/kevin.larscheid

[www.cbre.com/kevin.larscheid](http://www.cbre.com/kevin.larscheid)

**CBRE**